

UNITED STATES  
DEPARTMENT OF THE INTERIOR  
BUREAU OF LAND MANAGEMENT

APPLICATION FOR PERMIT TO DRILL OR DEEPEN

1a. TYPE OF WORK

DRILL ☒

DEEPEN ☐

b. TYPE OF WELL

OIL  
WELL ☒

GAS  
WELL ☐

OTHER ☐

SINGLE  
ZONE ☒

MULTIPLE  
ZONE ☐

2. NAME OF OPERATOR

Giant Exploration & Production Company (505) 326-3325

3. ADDRESS AND TELEPHONE NO.

P.O. Box 2810, Farmington, NM 87499

4. LOCATION OF WELL (Report location clearly and in accordance with any State requirements.\*)

At surface

300' FNL & 1050' FWL

At proposed prod. zone

Same

14. DISTANCE IN MILES AND DIRECTION FROM NEAREST TOWN OR POST OFFICE\*

4 air miles N of Waterflow, NM

15. DISTANCE FROM PROPOSED\*

LOCATION TO NEAREST  
PROPERTY OR LEASE LINE, FT.  
(Also to nearest drig. unit line, if any)

300'

16. NO. OF ACRES IN LEASE

160

17. NO. OF ACRES ASSIGNED  
TO THIS WELL

40

18. DISTANCE FROM PROPOSED LOCATION\*  
TO NEAREST WELL, DRILLING, COMPLETED,  
OR APPLIED FOR, ON THIS LEASE, FT.

739'

19. PROPOSED DEPTH

2,375'

20. ROTARY OR CABLE TOOLS

Rotary

21. ELEVATIONS (Show whether DF, RT, GR, etc.)

5,391' ungraded ground

22. APPROX. DATE WORK WILL

Aug. 1, 1995

23.

PROPOSED CASING AND CEMENTING PROGRAM

SIZE OF HOLE	GRADE, SIZE OF CASING	WEIGHT PER FOOT	SETTING DEPTH	QUANTITY OF CEMENT
8-3/4"	7"	20# (J-55)	320'	≈107 cu ft & to surface
6-1/4"	4-1/2"	9.5# (J-55)	2,375'	≈503 cu ft & to surface

Well is 1,613' from unit boundary.

RECEIVED  
AUG - 4 1995  
OIL CON. DIV.  
DIST. 3

cc: BLM (3+2) (OCD)

IN ABOVE SPACE DESCRIBE PROPOSED PROGRAM: If proposal is to deepen, give data on present productive zone and proposed new productive zone. If proposal is to deepen directionally, give pertinent data on subsurface locations and measured and true vertical depths. Give blowout preventer program, if any.

24.

SIGNED

TITLE

Area Engineer.

DATE

JUN 01 1995

(This space for Federal or State office use)

PERMIT NO.

APPROVAL DATE

Application approval does not warrant or certify that the applicant holds legal or equitable title to those rights in the subject lease which would entitle the applicant to conduct operations thereon.  
CONDITIONS OF APPROVAL, IF ANY:

APPROVED BY

TITLE

APPROVED  
AS AMENDED

AUG 22 1995

DISTRICT MANAGER

District I  
PC-Box 1980, Hobbs, NM 88241-1980  
District II  
PO Drawer DD, Artesia, NM 88211-0719  
District III  
1000 Rio Brazos Rd., Aztec, NM 87410  
District IV  
PO Box 2088, Santa Fe, NM 87504-2088

State of New Mexico  
Energy, Minerals & Natural Resources Department

OIL CONSERVATION DIVISION  
PO Box 2088  
Santa Fe, NM 87504-2088

Handwritten notes: "Held 10/4", "Submit to Appropriate District Office", "156-3549", and a circled "156-3549".

Form C-102  
Revised February 21, 1994  
Instructions on back  
Submit to Appropriate District Office  
State Lease - 4 Copies  
Fee Lease - 3 Copies  
☐ AMENDED REPORT

WELL LOCATION AND ACREAGE DEDICATION PLAT

1 API Number <u>30-045-29271</u>		2 Pool Code <u>32870</u>		3 Pool Name <u>Horseshoe-Gallup</u>	
4 Property Code <u>16547</u>		5 Property Name <u>NORTHEAST HOGBACK UNIT</u>			6 Well Number <u>55</u>
7 OGRID No. <u>008987</u>		8 Operator Name <u>GIANT EXPLORATION AND PRODUCTION COMPANY</u>			9 Elevation <u>5391</u>

10 Surface Location

UL or lot no.	Section	Township	Range	Lot Idn	Feet from the	North/South line	Feet from the	East/West line	County
D	14	30N	16W		300	NORTH	1050	WEST	SAN JUAN

11 Bottom Hole Location If Different From Surface

UL or lot no.	Section	Township	Range	Lot Idn	Feet from the	North/South line	Feet from the	East/West line	County

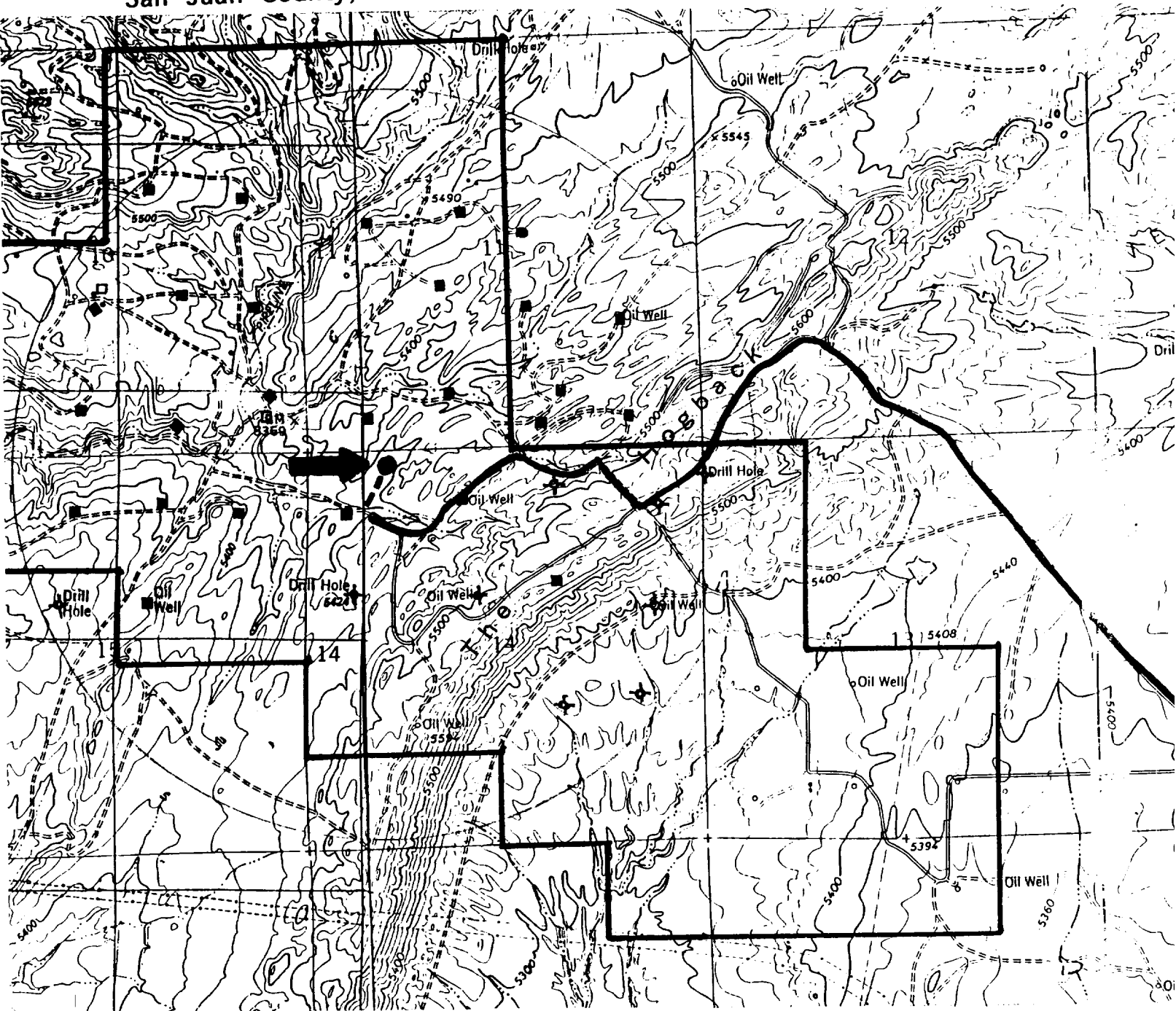
12 Dedicated Acres <u>J. #7</u>	13 Joint or Infill <u>J. #7</u>	14 Consolidation Code	15 Order No.
------------------------------------	------------------------------------	-----------------------	--------------

NO ALLOWABLE WILL BE ASSIGNED TO THIS COMPLETION UNTIL ALL INTERESTS HAVE BEEN CONSOLIDATED  
OR A NON-STANDARD UNIT HAS BEEN APPROVED BY THE DIVISION

		<p>17 OPERATOR CERTIFICATION</p> <p>I hereby certify that the information contained herein is true and complete to the best of my knowledge and belief</p> <p><u>Gregory E. McIntosh</u> Signature Printed Name Area Engineer Title May 30, 1995 Date</p>	
<p>RECEIVED AUG - 4 1995 OIL CON. DIV. DIST. 13</p>		<p>18 SURVEYOR CERTIFICATION</p> <p>I hereby certify that the well location shown on this plat was plotted from field notes of actual surveys made by me or under my supervision, and that the same is true and correct to the best of my belief.</p> <p>May 1995 Date of Survey Signature and Seal of Registered Professional Land Surveyor <u>Cecil B. Tullis</u> Cecil B. Tullis Certificate Number 9672</p>	



Giant Exploration & Production Company  
 Northeast Hogback Unit 55  
 300' FNL & 1050' FWL  
 Sec. 14, T. 30 N., R. 16 W.  
 San Juan County, NM



Proposed Well: ●

Existing Road: ~

Existing Well: □ ♦ ■

New Road: - -

Unit Boundary: L