

UNITED STATES
DEPARTMENT OF THE INTERIOR
BUREAU OF LAND MANAGEMENT

APPLICATION FOR PERMIT TO DRILL, DEEPEN, OR PLUG BACK

1A. TYPE OF WORK

DRILL ☒

DEEPCEN ☐

PLUG BACK ☐

B. TYPE OF WELL

OIL
WELL ☒

GAS
WELL ☐

OTHER ☐

SINGLE
ZONE ☒

MULTIPLE
ZONE ☐

2. NAME OF OPERATOR

Central Resources, Inc. c/o PLAYA Minerals & Energy, Inc.

3. ADDRESS OF OPERATOR

650 North Sam Houston Parkway E., Suite 500, Houston, TX 77060

4. LOCATION OF WELL (Report location clearly and in accordance with any State requirements.)

At surface

300' FNL and 1050' FWL

At proposed prod. zone

300' FNL and 1050' FWL

14. DISTANCE IN MILES AND DIRECTION FROM NEAREST TOWN OR POST OFFICE

4 air miles north of Waterflow, NM

15. DISTANCE FROM PROPOSED*
LOCATION TO NEAREST
PROPERTY OR LEASE LINE, FT.
(Also to nearest drig. unit line, if any)

300'

18. DISTANCE FROM PROPOSED LOCATION*
TO NEAREST WELL, DRILLING, COMPLETED,
OR APPLIED FOR, ON THIS LEASE, FT.

739'

16. NO. OF ACRES IN LEASE

160

19. PROPOSED DEPTH, FT.

2,375'

17. NO. OF ACRES ASSIGNED
TO THIS WELL

40

20. ROTARY OR CABLE TOOLS

Rotary

21. ELEVATIONS (Show whether DF, RT, GR, etc.)

5391' ungraded ground

22. APPROX. DATE WORK WILL START*

November 21, 1999

23.

PROPOSED CASING AND CEMENTING PROGRAM

SIZE OF HOLE	SIZE OF CASING	WEIGHT PER FOOT	SETTING DEPTH	QUANTITY OF CEMENT
8 3/4"	7"	20# (J-55)	320'	equiv. 107 cu ft. & to surface
6 1/4"	4 1/2"	9.5# (J-55)	2,375'	equiv. 503 cu ft. & to surface

This action is subject to technical and
procedural review pursuant to 43 CFR 3165.3
and appeal pursuant to 43 CFR 3165.4.

DRILLING OPERATIONS AUTHORIZED ARE
SUBJECT TO COMPLIANCE WITH ATTACHED
"GENERAL REQUIREMENTS"

Well is 1,613' from unit boundary. This APD was originally submitted by Giant
Exploration & Production Company. Cenral requests that the approval for this
location be reinstated as expeditiously as possible. Central anticipates no
changes from the original approved APD and accepts the conditions for the
original APD.

IN ABOVE SPACE DESCRIBE PROPOSED PROGRAM: If proposal is to deepen or plug back, give data on present productive zone and proposed new productive
zone. If proposal is to drill or deepen directionally, give pertinent data on subsurface locations and measured and true vertical depths. Give blowout
preventer program, if any.

24.

SIGNED

TITLE Regulatory & Environmental Mgrs 10/19/99

(This space for Federal or State office use)

PERMIT NO.

APPROVAL DATE

NOV 04 1999

/s/ Joe Hewitt

Team Lead, Petroleum Management

NOV - 4 1999

APPROVED BY

TITLE

DATE

CONDITIONS OF APPROVAL, IF ANY:

*See Instructions On Reverse Side

Title 18 U.S.C. Section 1001, makes it a crime for any person knowingly and willfully to make to any department or agency of the
United States any false, fictitious or fraudulent statements or representations as to any matter within its jurisdiction.

1151 - 2519 (C)

NMOOD

District I
PO Box 1980, Hobbs, NM 88241-1980
District II
PO Drawer DD, Artesia, NM 88211-0719
District III
1000 Rio Brazos Rd., Aztec, NM 87410
District IV
PO Box 2088, Santa Fe, NM 87504-2088

State of New Mexico
Energy, Minerals & Natural Resources Department

OIL CONSERVATION DIVISION
PO Box 2088
Santa Fe, NM 87504-2088

Form C-102
Revised February 21, 1994
Instructions on back
Submit to Appropriate District Office
State Lease - 4 Copies
Fee Lease - 3 Copies

☐ AMENDED REPORT

WELL LOCATION AND ACREAGE DEDICATION PLAT

1 API Number		2 Pool Code 32870		3 Pool Name Horseshoe-Gallup	
4 Property Code		5 Property Name NORTHEAST HOGBACK UNIT			6 Well Number 55
7 OGRID No. 008987		8 Operator Name GIANT EXPLORATION AND PRODUCTION COMPANY			9 Elevation 5391

10 Surface Location

UL or lot no.	Section	Township	Range	Lot Ida	Feet from the	North/South line	Feet from the	East/West line	County
D	14	30N	16W		300	NORTH	1050	WEST	SAN JUAN

11 Bottom Hole Location If Different From Surface

UL or lot no.	Section	Township	Range	Lot Ida	Feet from the	North/South line	Feet from the	East/West line	County

12 Dedicated Acres	13 Joint or Infill	14 Consolidation Code	15 Order No.

NO ALLOWABLE WILL BE ASSIGNED TO THIS COMPLETION UNLESS INTERESTS HAVE BEEN CONSOLIDATED
OR A NON-STANDARD UNIT HAS BEEN APPROVED BY THE DIVISION

2635.75 1050'		WEST 2640.00		NOV - 1995 OIL CON. DIV.		17 OPERATOR CERTIFICATION I hereby certify that the information contained herein is true and complete to the best of my knowledge and belief	
159.84 AC ±		2639.23		160.08 AC ±		Signature Gregory E. McIntosh	
2641.17		2642.30		S 89° 59' E		Printed Name Area Engineer	
160.17 AC ±		2639.23		160.28 AC ±		Title May 30, 1995	
2646.60		N 89° 58' W		2646.60		Date 18 SURVEYOR CERTIFICATION I hereby certify that the well location shown on this plat was plotted from field notes of actual surveys made by me or under my supervision, and that the same is true and correct to the best of my belief.	
						May 15, 1995 Date of Survey Signature and Seal of Registered Professional Land Surveyor Cecil B. Tullis Certificate Number 9672	

Giant Exploration & Production Company

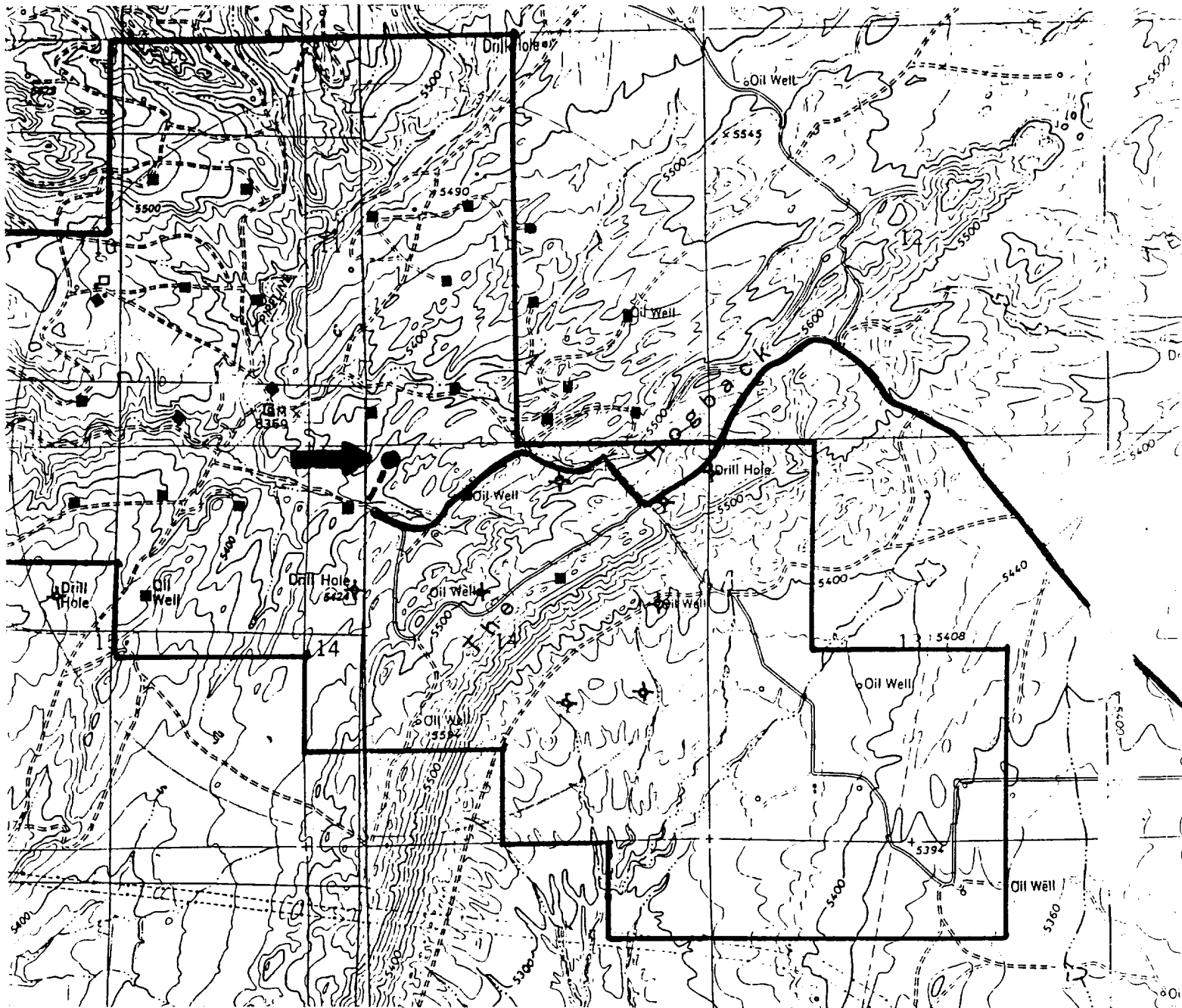
PAGE 11

Northeast Hogback Unit 55

300' FNL & 1050' FWL

Sec. 14, T. 30 N., R. 16 W.

San Juan County, NM



Proposed Well: ●

Existing Road: ~

Existing Well: □ ◆ ■

New Road: - -

Unit Boundary: └