

District I
PO Box 1980, Hobbs, NM 88241-1980
District II
PO Drawer DD, Artesia, NM 88211-0719
District III
1000 Rio Brazos Rd., Aztec, NM 87410
District IV
PO Box 2088, Santa Fe, NM 87504-2088

State of New Mexico
Energy, Minerals & Natural Resources Department

RECEIVED
SEP - 5 1995

Form C-101
Revised February 10, 1994

OIL CONSERVATION DIVISION
PO Box 2088
Santa Fe, NM 87504-2088

OIL CON. DIV.
DIST. 3

Instructions on back
Submit to Appropriate District Office
State Lease - 6 Copies
Fee Lease - 5 Copies

☐ AMENDED REPORT

APPLICATION FOR PERMIT TO DRILL, RE-ENTER, DEEPEN, PLUGBACK, OR ADD A ZONE

¹ Operator Name and Address. Thompson Engineering & Production Corporation 7415 E. Main Farmington, New Mexico 87402		¹ OGRID Number 037581
		¹ API Number 30-045-29281
⁴ Property Code E 017560	⁴ Property Name Blancett	¹ Well No. 2R

⁷ Surface Location

UL or lot no.	Section	Township	Range	Lot Ida	Feet from the	North/South line	Feet from the	East/West line	County
P	13	30	12		790	South	830	East	San Juan

⁸ Proposed Bottom Hole Location If Different From Surface

UL or lot no.	Section	Township	Range	Lot Ida	Feet from the	North/South line	Feet from the	East/West line	County
¹⁰ Proposed Pool 1 160 Aztec Pictured Cliffs					¹⁰ Proposed Pool 2 71280				

¹¹ Work Type Code N	¹¹ Well Type Code G	¹¹ Cable/Rotary Rotary	¹¹ Lease Type Code Fee	¹¹ Ground Level Elevation 5531
¹¹ Multiple	¹¹ Proposed Depth 1950	¹¹ Formation Pictured Cliffs	¹¹ Contractor NA	¹¹ Spud Date 10/15/95

²¹ Proposed Casing and Cement Program

Hole Size	Casing Size	Casing weight/foot	Setting Depth	Sacks of Cement	Estimated TOC
8 3/4	7	20# K55	120	50	Surface
6 1/4	4 1/2	105# K55	1950	115 & 100	Surface

²¹ Describe the proposed program. If this application is to DEEPEN or PLUG BACK give the data on the present productive zone and proposed new productive zone. Describe the blowout prevention program, if any. Use additional sheets if necessary.

Thompson Engineering & Production proposes to drill a vertical well and attempt a completion in the Aztec Pictured Cliffs Pool according to the attached drilling plan.

This will be a replacement well for the Blancett #2 which will be plugged and abandoned.

²¹ I hereby certify that the information given above is true and complete to the best of my knowledge and belief.

Signature: *Paul C. Thompson*

Printed name: Paul C. Thompson

Title: President

Date: 9/1/95

Phone: (505) 327-4892

OIL CONSERVATION DIVISION

Approved by: *Emile B. Smith* 9-18-95

Title: DEPUTY OIL & GAS INSPECTOR, DIST. #3

Approval Date: SEP 18 1995 Expiration: SEP 18 1996

Conditions of Approval:
Attached ☐

District I
PO Box 1980, Hobbs, NM 88241-1980
District II
PO Drawer DD, Artesia, NM 88211-0719
District III
1000 Rio Brazos Rd., Aztec, NM 87410
District IV
PO Box 2088, Santa Fe, NM 87504-2088

State of New Mexico
Energy, Minerals & Natural Resources Department

SEP - 5 1995

Form C-102
Revised February 21, 1994

OIL CONSERVATION DIVISION
PO Box 2088
Santa Fe, NM 87504-2088

OIL CON. DIV.
DIST. 3

Instructions on back
Submit to Appropriate District Office
State Lease - 4 Copies
Fee Lease - 3 Copies

☐ AMENDED REPORT

WELL LOCATION AND ACREAGE DEDICATION PLAT

1 API Number 30-045-29281		2 Pool Code 71280		3 Pool Name Aztec Pictured Cliffs	
4 Property Code 1017560		5 Property Name Blancett			6 Well Number 2R
7 OGRID No. 037581		8 Operator Name Thompson Engineering Corp.			9 Elevation 5531'

10 Surface Location

UL or lot no. P	Section 13	Township 30 N	Range 12 W	Lot Idn	Feet from the 790	North/South line South	Feet from the 830	East/West line East	County SJ
--------------------	---------------	------------------	---------------	---------	----------------------	---------------------------	----------------------	------------------------	--------------

11 Bottom Hole Location If Different From Surface

UL or lot no.	Section	Township	Range	Lot Idn	Feet from the	North/South line	Feet from the	East/West line	County
---------------	---------	----------	-------	---------	---------------	------------------	---------------	----------------	--------

12 Dedicated Acres 160	13 Joint or Infill N	14 Consolidation Code	15 Order No.
---------------------------	-------------------------	-----------------------	--------------

NO ALLOWABLE WILL BE ASSIGNED TO THIS COMPLETION UNTIL ALL INTERESTS HAVE BEEN CONSOLIDATED
OR A NON-STANDARD UNIT HAS BEEN APPROVED BY THE DIVISION

16	5190.24'		17 OPERATOR CERTIFICATION I hereby certify that the information contained herein is true and complete to the best of my knowledge and belief Paul C. Thompson Signature Paul C. Thompson, President Printed Name President Title 9/1/95 Date	
	5268.45'			18 SURVEYOR CERTIFICATION I hereby certify that the well location shown on this plat was plotted from field notes of actual surveys made by me or under my supervision, and that the same is true and correct to the best of my belief. 8-29-95 Date of Survey Signature and Seal of Professional Surveyor: NEALE C. EDWARDS NEW MEXICO 0857 6857 Certificate Number
	5243.86'			

BLANCETT #2R
790' FSL, 83' FEL
Section 13 T30N, R12W,
SAN JUAN COUNTY, NEW MEXICO
ELEVATIONS: 5531' GL

GEOLOGY:

FORMATION TOPS:

Formation	Depth
Ojo Alamo	455'
Kirtland	515'
Fruitland	1615'
Pictured Cliffs	1815'
Total Depth	1950'

Note: The total Depth of the well will be about 150 feet below the bottom of the deepest coal but not less than 1950' unless approved by the company man on-site.

ELECTRICAL LOGGING PROGRAM:

Type	Interval
FDC-GR-Caliper	TD to minimum logging depth above TD.
Induction Resistivity	TD to base of surface csg

DRILLING:

MUD PROGRAM: Drilling mud and water will be furnished by the contractor from surface to total depth. Mud system will primarily be produced water with polymer sweeps.

WELLHEAD:

Component Description	Size	Pressure
Well, Inc W-92 casing head	7" x 4-1/2"	2000 psi
Well, Inc Slip & seal assembly	7" x 4-1/2"	2000 psi
Well, Inc WMR tubing head w/ Mandrel suspension. (or comparable equipment)	4-1/2" x 2-3/8"	2000 psi



BLOWOUT PREVENTION EQUIPMENT REQUIREMENTS:

Description	Rating
Annular Type Preventer	2000 psi

While drill pipe is in use the BOP will be tested not less than once each day. All tests will be recorded in the daily tour reports as to date and time.

CASING PROGRAM:

Interval	Hole Size	Casing Size	Depth
-----	-----	-----	-----
Surface	8-3/4"	7" 20# K-55	120'
Production	6-1/4"	4-1/2" 10.5# K-55	1950'

FLOAT EQUIPMENT:

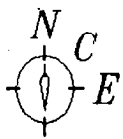
Surface: None.

Production: 4-1/2" standard guide shoe and 4-1/2" self fill insert float collar on top of bottom joint. Eight centralizers, placed on every other collar starting at the bottom.

CEMENTING:

Surface casing: 7" - Use 50 sx (59 cu.ft.) of C1 "B" with 2% CaCl_2 and 1/4# flocele/sk. (yield = 1.18 cu.ft./sk.) WOC six hours or until samples are hard before nipping up BOPs. Test surface casing and BOPs to 600# before drilling out.

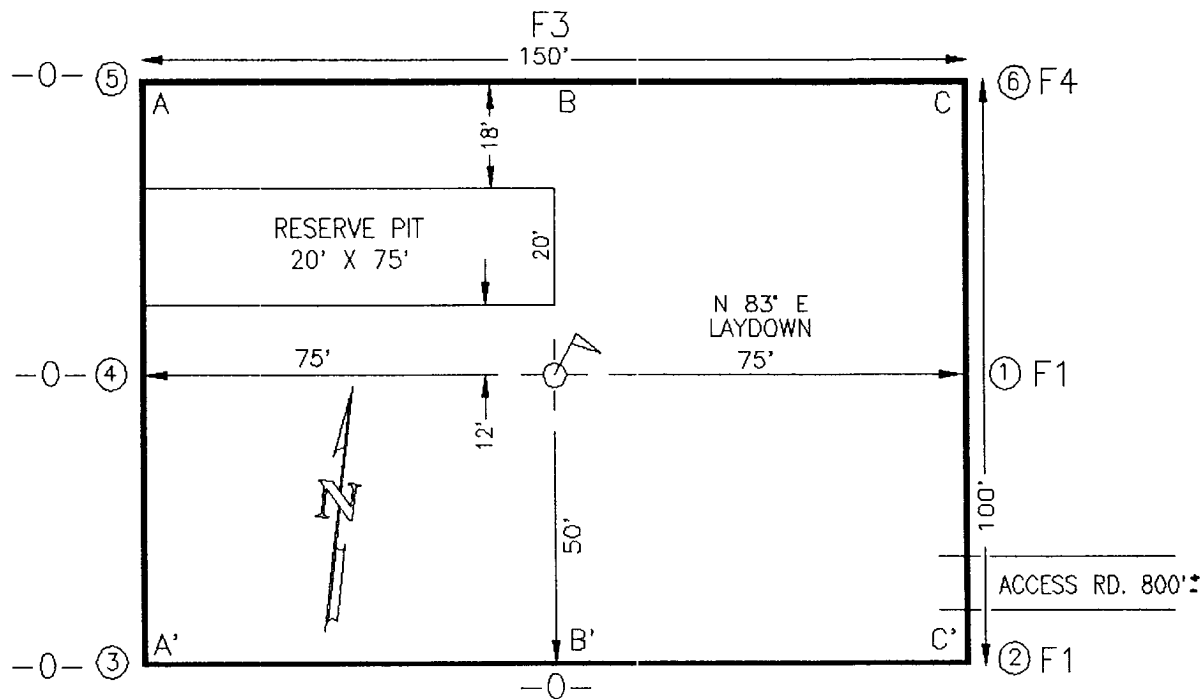
Production casing: 4-1/2" - Use 115 sx (237 cu.ft.) of C1 "B" with 2% sodium metasilicate and 1/4# flocele/sk (yield= 2.06 cu.ft./sk). Tail in with 100 sx (118 cu.ft.) of C1 "B" with 2% CaCl_2 and 1/4# flocele/sk (yield= 1.18 cu.ft./sk.) Volume calculated to circulate cement to surface with 75% excess.



P.O. BOX 6612
FARMINGTON, NEW MEXICO 87402
(505) 325-2654

SURVEYS, INC.

NAME: THOMPSON ENGINEERING CORP. BLANCETT 2R
FOOTAGE: 790' FSL 830' FEL
SECTION: 13 T 30 N, R 12 W, NMPM
COUNTY: SAN JUAN STATE: NEW MEXICO
ELEVATION: 5531' DATE: 8/29/95



A-A'

C/L

5541'						
5531'						
5521'						

B-B'

C/L

5541'						
5531'						
5521'						

C-C'

C/L

5541'						
5531'						
5521'						

