


UNITED STATES
DEPARTMENT OF THE INTERIOR
BUREAU OF LAND MANAGEMENT

APPLICATION FOR PERMIT TO DRILL, DEEPEN, OR PLUG BACK

1a. Type of Work DRILL	5. Lease Number SF-080133 Unit Reporting Number	
1b. Type of Well GAS	6. If Indian, All. or Tribe	
2. Operator MERIDIAN OIL 145.38	7. Unit Agreement Name San Juan 32-9 Unit	
3. Address & Phone No. of Operator PO Box 4289, Farmington, NM 87499 (505) 326-9700	8. Farm or Lease Name 7473 San Juan 32-9 Unit 9. Well Number 47A	
4. Location of Well 1550' FNL, 920' FWL Latitude 36° 55.8, Longitude 107° 47.5	10. Field, Pool, Wildcat 72359 EXT Blanco PC/Blanco MV 11. Sec., Twn, Rge, Mer. (NMPM) E Sec 4, T-31-N, R-9-W API # 30-045-29332	
14. Distance in Miles from Nearest Town 4 miles to Cedar Hill	12. County San Juan	13. State NM
15. Distance from Proposed Location to Nearest Property or Lease Line 920'	17. Acres Assigned to Well 157.4 NW/4 314.19 W/2	
16. Acres in Lease		
18. Distance from Proposed Location to Nearest Well, Drig, Compl, or Applied for on this Lease 2000'	This action is subject to technical and procedural review pursuant to 43 CFR 3165.3 and appeal pursuant to 43 CFR 3165.4.	
19. Proposed Depth 6200'	20. Rotary or Cable Tools Rotary	
21. Elevations (DF, FT, GR, Etc.) 6629' GR	22. Approx. Date Work will Start 4th quarter 1995	
23. Proposed Casing and Cementing Program See Operations Plan attached	DRILLING OPERATIONS AUTHORIZED ARE SUBJECT TO COMPLIANCE WITH ATTACHED "GENERAL REQUIREMENTS"	
24. Authorized by:  Regional Drilling Engineer	Date 11/27/95	

PERMIT NO. _____

APPROVED BY _____

TITLE _____

APPROVED
AS AMENDED
DEC 05 1995
DISTRICT MANAGER

DATE _____

Archaeological Report to be submitted

Threatened and Endangered Species Report to be submitted

NOTE: This format is issued in lieu of U.S. BLM Form 3160-3

ACCEPTED FOR RECORD
DEC 05 1995
FARMINGTON DISTRICT OFFICE
BY _____

NMOCD

District I
PO Box 1988, Hobbs, NM 88241-1988
District II
PO Drawer DD, Artesia, NM 88211-0719
District III
1800 Rio Brava Rd., Aztec, NM 87410
District IV
PO Box 2088, Santa Fe, NM 87504-2088

State of New Mexico
Energy, Minerals & Natural Resources Department

OIL CONSERVATION DIVISION
PO Box 2088
Santa Fe, NM 87504-2088

RECEIVED
MAIL ROOM
NOV 23 PM 3:01
OIL CONSERVATION DIV.

Form C-102
Revised February 21, 1994
Instructions on back
Submit to Appropriate District Office
State Lease - 4 Copies
Fee Lease - 3 Copies

AMENDED REPORT

WELL LOCATION AND ACREAGE DEDICATION PLAT

API Number 30-045-22332	Pool Code 72359/72319	Pool Name Blanco Pictured Cliffs/Blanco Mesaverde
Property Code 7473	Property Name San Juan 32-9 Unit	Well Number 47A
OGRID No. 14538	Operator Name Meridian Oil Inc.	Elevation 6629'

10 Surface Location

UL or lot no.	Section	Township	Range	Lot Ida	Feet from the	North/South line	Feet from the	East/West line	County
E	4	31 N	9 W		1550	North	920	West	S.J.

11 Bottom Hole Location If Different From Surface

UL or lot no.	Section	Township	Range	Lot Ida	Feet from the	North/South line	Feet from the	East/West line	County

12 Dedicated Acres 13 Joint or Infill 14 Consolidation Code 15 Order No.

157.40-W/1314.19

NO ALLOWABLE WILL BE ASSIGNED TO THIS COMPLETION UNTIL ALL INTERESTS HAVE BEEN CONSOLIDATED
OR A NON-STANDARD UNIT HAS BEEN APPROVED BY THE DIVISION

16 2624.82' 4 FEE 1303.50' 1550' 920' 8 1290.96' SF-080133	7 2632.74' 6 5 1271.82' 1298.22' 9 12 OIL CON. DIV. DIST. 3 13 14 15 16 SF-080875 17 18 5250.96' 2595.78'	17 OPERATOR CERTIFICATION I hereby certify that the information contained herein is true and complete to the best of my knowledge and belief Signature Peggy Bradfield Printed Name Regulatory Administrator Title 11-1-95 Date 18 SURVEYOR CERTIFICATION I hereby certify that the well location shown on this plat was plotted from field notes of actual surveys made by me or under my supervision, and that the same is true and correct to the best of my belief. 10-2-95 Date of Survey Signature and Seal of Professional Surveyor NORMAN C. EDWARDS 8851 8852 Certificate Number
---------------------------------------------------------------------------------------	-----------------------------------------------------------------------------------------------------------------------------------------------------------------	----------------------------------------------------------------------------------------------------------------------------------------------------------------------------------------------------------------------------------------------------------------------------------------------------------------------------------------------------------------------------------------------------------------------------------------------------------------------------------------------------------------------------------------------------------------------------------------------------------------------------------------------

OPERATIONS PLAN

Well Name: San Juan 32-9 Unit #47A
Location: 1550' FNL, 920' FWL Section 4, T-31-N, R-9-W
 San Juan County, New Mexico
 Latitude 36° 55.8, Longitude 107° 47.5
Formation: Blanco Mesa Verde/Blanco Pictured Cliffs
Elevation: 6629' GL

<u>Formation Tops:</u>	<u>Top</u>	<u>Bottom</u>	<u>Contents</u>
Surface	San Jose	1724'	
Ojo Alamo	1724'	1790'	aquifer
Kirtland	1790'	2912'	
Fruitland	2912'	3507'	gas
Pictured Cliffs	3507'	3632'	gas
Lewis	3632'	4204'	
Intermediate TD	3850'		
Huerfanito Bentonite	4204'	4250'	
Chacra	4250'	5397'	
Massive Cliff House	5397'	5439'	gas
Menefee	5439'	5749'	gas
Massive Point Lookout	5749'	5832'	gas
Lower Point Lookout	5832'		
Total Depth	6200'		

Logging Program:

Openhole Wireline Logging -
 Surface to Intermediate TD : DIL/LDT/CNL/NGT/ML/FMS
 Intermediate TD to Total Depth : DIL/LDT/CNL/Temp
 Mud Logs/Coring/DST -
 Mud logs - 1650' to Total Depth
 Cores - none
 DST - none

Mud Program:

<u>Interval</u>	<u>Type</u>	<u>Weight</u>	<u>Vis.</u>	<u>Fluid Loss</u>
0- 200'	Spud	8.4-8.9	40-50	no control
200-3850'	Weighted	8.4-9.1	30-60	no control
3850-6200'	Gas/Mist	n/a	n/a	n/a

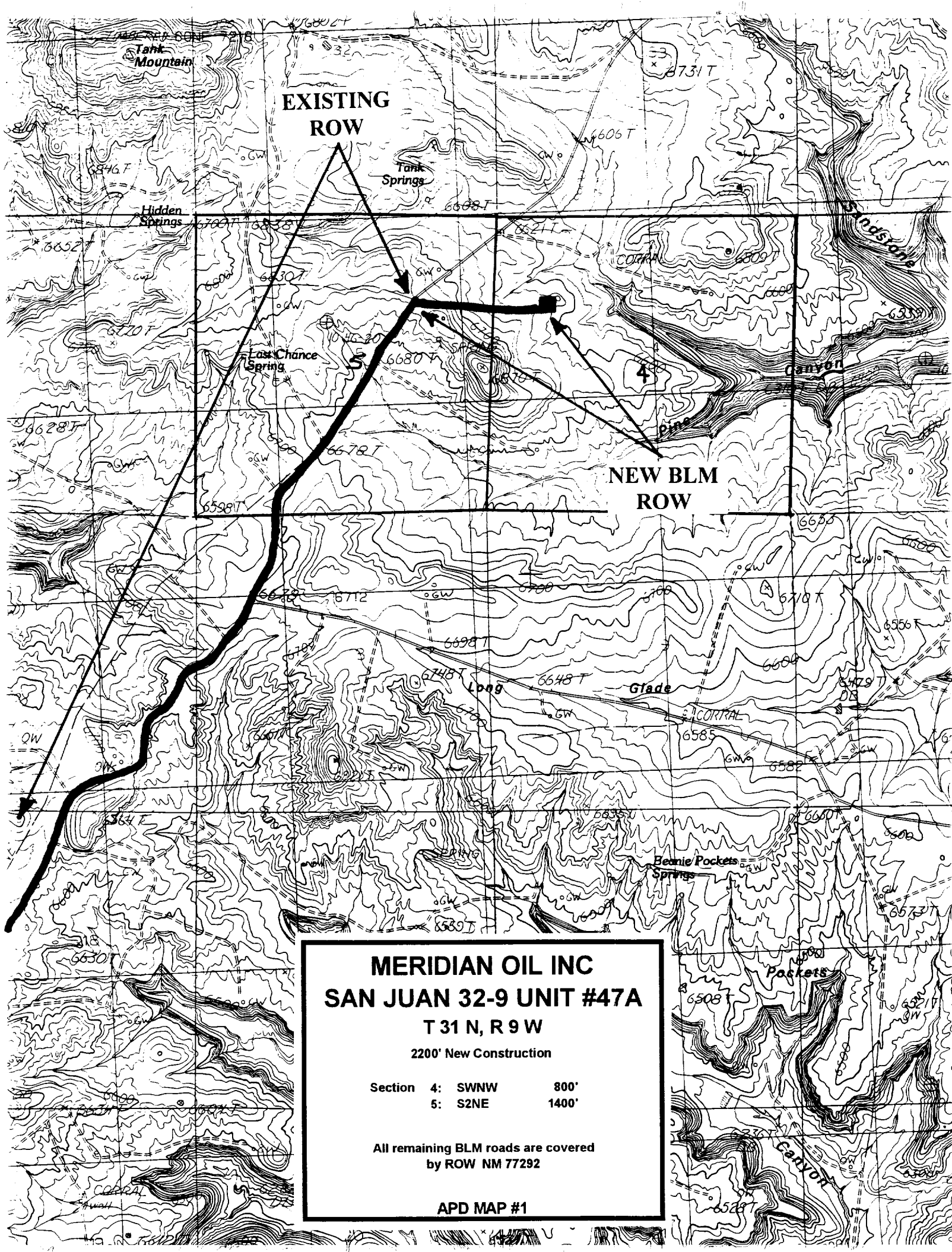
Pit levels will be visually monitored to detect gain or loss of fluid control.

Casing Program:

<u>Hole Size</u>	<u>Depth Interval</u>	<u>Csg. Size</u>	<u>Wt.</u>	<u>Grade</u>
12 1/4"	0' - 200'	9 5/8"	32.3#	H-40
8 3/4"	0' - 3850'	7"	20.0#	K-55
6 1/4"	3700' - 6200'	4 1/2"	10.5#	K-55

Tubing Program:

0' - 6200' 2 3/8" 4.7# J-55



MERIDIAN OIL INC
SAN JUAN 32-9 UNIT #47A

T 31 N, R 9 W

2200' New Construction

Section	4:	SWNW	800'
	5:	S2NE	1400'

All remaining BLM roads are covered
by ROW NM 77292

APD MAP #1