

**DISTRICT I**  
P.O. Box 1980, Hobbs, NM 88241-1980  
**DISTRICT II**  
P.O. Box Drawer DD, Artesia, NM 88211-0719  
**DISTRICT III**  
1000 Rio Brazos Rd., Aztec, NM 87410  
**DISTRICT IV**  
P.O. Box 2088, Santa Fe, NM 87504-2088

State of New Mexico  
Energy, Minerals and Natural Resources Department

*Repermitted*

Form C-101  
Revised February 10, 1999  
Instructions on back  
Submit to Appropriate District Office  
State Lease - 6 Copies  
Fee Lease - 5 Copies

**OIL CONSERVATION DIVISION**

P.O. Box 2088  
Santa Fe, New Mexico 87504-2088

AMENDED REPORT

**APPLICATION FOR PERMIT TO DRILL, RE-ENTER, DEEPEN, PLUGBACK, OR ADD A ZONE**

<sup>1</sup> Operator Name and Address FOUR STAR OIL AND GAS COMPANY 3300 N. Butler Ave., Suite 100 Farmington NM 87401		<sup>2</sup> OGRID Number 131994
<sup>4</sup> Property Code -11156-17674	<sup>5</sup> Property Name FEDERAL STATE COM	<sup>3</sup> API Number 30-045-29401
		<sup>6</sup> Well No. 2

**RECEIVED**  
AUG 26 1996

**OIL CON. DIV.**  
**DIST. 3**

<sup>7</sup> Surface Location

UI or lot no.	Section	Township	Range	Lot.Idn	Feet From The	North/South Line	Feet From The	East/West Line	County
O	32	T30N	R11W		1120	SOUTH	1605	EAST	SAN JUAN

<sup>8</sup> Proposed Bottom Hole Location If Different From Surface

UI or lot no.	Section	Township	Range	Lot.Idn	Feet From The	North/South Line	Feet From The	East/West Line	County
<sup>9</sup> Proposed Pool 1 75680 CROUCH MESA - MESA VERDE (EXT) 158.77					<sup>10</sup> Proposed Pool 2				

<sup>11</sup> Work Type Code N	<sup>12</sup> Well Type Code G	<sup>13</sup> Rotary or C.T. ROTARY	<sup>14</sup> Lease Type Code S	<sup>15</sup> Ground Level Elevation 5893'
<sup>16</sup> Multiple NO	<sup>17</sup> Proposed Depth 3950'	<sup>18</sup> Formation MESA VERDE	<sup>19</sup> Contractor	<sup>20</sup> Spud Date

<sup>21</sup> Proposed Casing and Cement Program

SIZE OF HOLE	SIZE OF CASING	WEIGHT PER FOOT	SETTING DEPTH	SACKS OF CEMENT	EST. TOP
11"	8-5/8"	24#	300'	215 SX	CIRC.
7-7/8"	4-1/2"	11.6#	3950'	1050 SX	CIRC.

<sup>22</sup> Describe the proposed program. If this application is to DEEPEN or PLUG BACK give the data on the present productive zone and proposed new productive zone. Describe the blowout prevention program, if any. Use additional sheets if necessary.

FOUR STAR OIL & GAS CO. PROPOSES TO DRILL THIS DEVELOPMENT WELL. ATTACHED FOR REFERENCE ARE THE FOLLOWING:

- SURVEY
- WELLSITE LAYOUT
- AREA PLAT
- CASING PROGRAM
- MUD PROGRAM
- LOGGING PROGRAM
- CEMENTING PROGRAM
- BLOWOUT PREVENTION EQUIPMENT DIAGRAM

ARCHAEOLOGICAL CLEARANCE HAS BEEN RECOMENDED. MOORE ANTHROPOLOGICAL RESEARCH - TECHNICAL REPORT NO. 95-010

<sup>23</sup> I hereby certify that the rules and regulations of the Oil Conservation Division have been complied with and that the information given above is true and complete to the best of my knowledge and belief.

Signature *Ted A. Tipton*  
Printed Name Ted A. Tipton

Title Operating Unit Manager

Date 8/22/96 Telephone 325-4397

<b>OIL CONSERVATION DIVISION</b>	
9-4-96	
Approved By: <i>Ernie Busch</i>	
Title: DEPUTY OIL & GAS INSPECTOR, DIST. #3	
Approval Date: SEP - 4 1996	Expiration Date: SEP - 4 1997
Conditions of Approval: Attached <input type="checkbox"/>	

DISTRICT I

P.O. Box 1980, Hobbs, NM 88241-1980

DISTRICT II

P.O. Box Drawer DD, Artesia, NM 88211-0719

DISTRICT III

1000 Rio Brazos Rd., Aztec, NM 87410

DISTRICT IV

P.O. Box 2088, Santa Fe, NM 87504-2088

State of New Mexico  
Energy, Minerals and Natural Resources Department

OIL CONSERVATION DIVISION

P.O. Box 2088  
Santa Fe, New Mexico 87504-2088

Form C-102  
Revised February 10, 1994  
Instructions on back  
Submit to Appropriate District Office  
State Lease - 4 Copies  
Fee Lease - 3 Copies  
 AMENDED REPORT

WELL LOCATION AND ACREAGE DEDICATION PLAT

<sup>1</sup> API Number 30-045-29401	<sup>2</sup> Pool Code 75680	<sup>3</sup> Pool Name CROUCH MESA - MESA VERDE (EXT)
<sup>4</sup> Property Code 17874	<sup>5</sup> Property Name FEDERAL STATE COM	<sup>6</sup> Well No. 2
<sup>7</sup> OGRID Number 131994	<sup>8</sup> Operator Name FOUR STAR OIL AND GAS COMPANY	<sup>9</sup> Elevation 5893'

<sup>10</sup> Surface Location

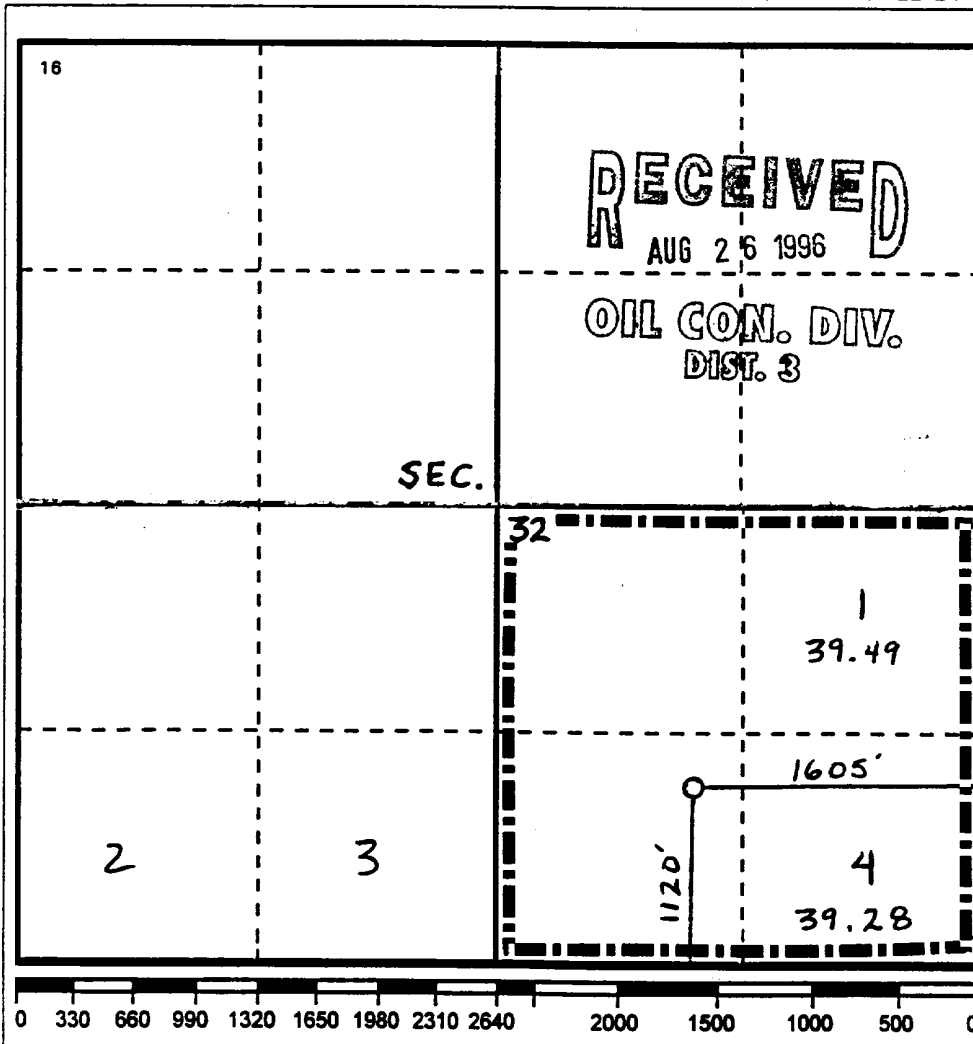
Ul or lot no.	Section	Township	Range	Lot.Idn	Feet From The	North/South Line	Feet From The	East/West Line	County
O	32	T30N	R11W		1120	SOUTH	1605	EAST	SAN JUAN

<sup>11</sup> Bottom Hole Location If Different From Surface

Ul or lot no.	Section	Township	Range	Lot.Idn	Feet From The	North/South Line	Feet From The	East/West Line	County

<sup>12</sup> Dedicated Acre 158.77	<sup>13</sup> Joint or Infill Yes	<sup>14</sup> Consolidation Code	<sup>15</sup> Order No.
--	--------------------------------------	----------------------------------	-------------------------

NO ALLOWABLE WILL BE ASSIGNED TO THIS COMPLETION UNTIL ALL INTERESTS HAVE BEEN CONSOLIDATED OR A NON-STANDARD UNIT HAS BEEN APPROVED BY THE DIVISION



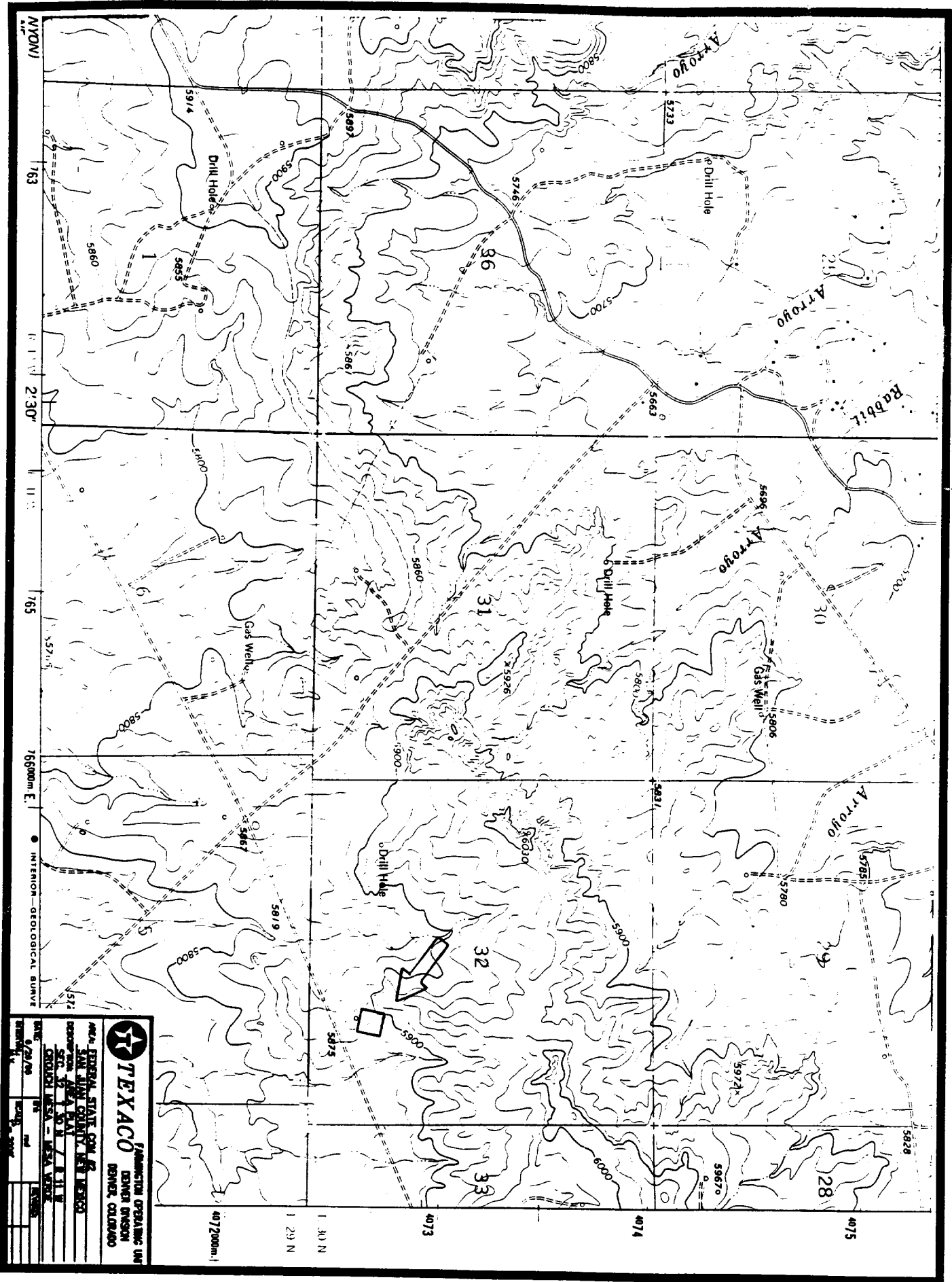
<sup>17</sup> OPERATOR CERTIFICATION  
I hereby certify that the information contained herein is true and complete to the best of my knowledge and belief

Signature  
*Ted A. Tipton*  
Printed Name  
Ted A. Tipton  
Position  
Operating Unit Manager  
Date  
8/1/96

<sup>18</sup> SURVEYOR CERTIFICATION  
I hereby certify that the well location shown on this plat was plotted from field notes of actual surveys made by me or under my supervision, and that the same is true and correct to the best of my knowledge and belief.

Date Surveyed  
8/5/96  
Signature & Seal of Professional Surveyor  
*Michael C. Edwards*  
Certificate No.  
6857





**TEXACO** PANHANDLE OPERATING UNIT  
 DENVER DIVISION  
 DENVER, COLORADO

WELLS: FEDERAL STATE CORP. # 2  
 SAN JUAN COUNTY, CO. # 12333  
 DEPARTMENT OF NATURAL RESOURCES  
 SECTION 31, T. 11 N., R. 11 E.  
 GORCHUCK AREA - WEA VERM.

DATE	BY	REVISION
6/28/74	WAL	1
7/1/74	WAL	2
7/1/74	WAL	3
7/1/74	WAL	4
7/1/74	WAL	5
7/1/74	WAL	6
7/1/74	WAL	7
7/1/74	WAL	8
7/1/74	WAL	9
7/1/74	WAL	10

Federal State Com No. 2  
San Juan Co., NM

CASING PROGRAM

Conductor

Casing: (Contractor discretion)

Surface

Casing: 11" hole, 8-5/8", 24#, WC-50, LTC, (surface - 300')

Production

Casing: 7-7/8" hole, 4-1/2", 11.6#, LS-65, LTC, (surface - 3950')

Tubing: 2-3/8", 4.7#, WC-50, EUE, (surface - 3950')

Federal State Com No. 2  
San Juan Co., NM

CEMENTING PROGRAM

8-5/8" SURFACE CASING

WELL DATA:

DEPTH: 300 FT.  
CASING: 8-5/8 IN.  
OPEN HOLE: 11 IN.

CEMENT SYSTEMS:

215 SX CLASS G + 2 % S1 (CALCIUM CHLORIDE), 1/4# FLOCELE

DENSITY: 15.8 LB/GAL  
YIELD: 1.15 CUFT/SX  
TOC: CIRCULATE TO SURFACE

4-1/2" PRODUCTION CASING

WELL DATA:

DEPTH: 3950 FT.  
CASING: 4-1/2 IN.  
OPEN HOLE: 7 7/8 IN.

CEMENT SYSTEMS:

LEAD: 700 SX 35/65 POZ + 6 % GEL + 10#/SK GILSONITE, 2 % CC, 1/4# FLOCELE

DENSITY: 12.6 LB/GAL  
YIELD: 1.89 CUFT/SX

TAIL: 350 SX 50/50 POZ + 2 % GEL + 5#/SK GILSONITE, 2 % CC, 1/4# FLOCELE

DENSITY: 14 LB/GAL  
YIELD: 1.22 CUFT/SX  
TOC: CIRCULATE TO SURFACE

Federal State Com No. 2  
San Juan Co., NM

MUD PROGRAM

<u>Est. Interval (RKB. ft.)</u>	<u>Type Mud</u>	<u>Mud Weight (ppg)</u>	<u>Visc. sec/qt</u>	<u>Fluid Loss (cc)</u>	<u>Remarks</u>
0'-300'	Fresh water	8.4	28	NC	Circ reserve, pH 9 w/lime
300'-TD	Fresh water/gel	8.4-8.5	30	20	Circ reserve, pH 9 w/lime 20 cc WL near TD

Federal State Com No. 2  
San Juan Co., NM

LOGGING PROGRAM

1) Electric Logging

Interval

Logs

Run #1

Open hole:

2,000' - T.D.

1) DEN-CNL-GR

SURFACE CASING to T.D.

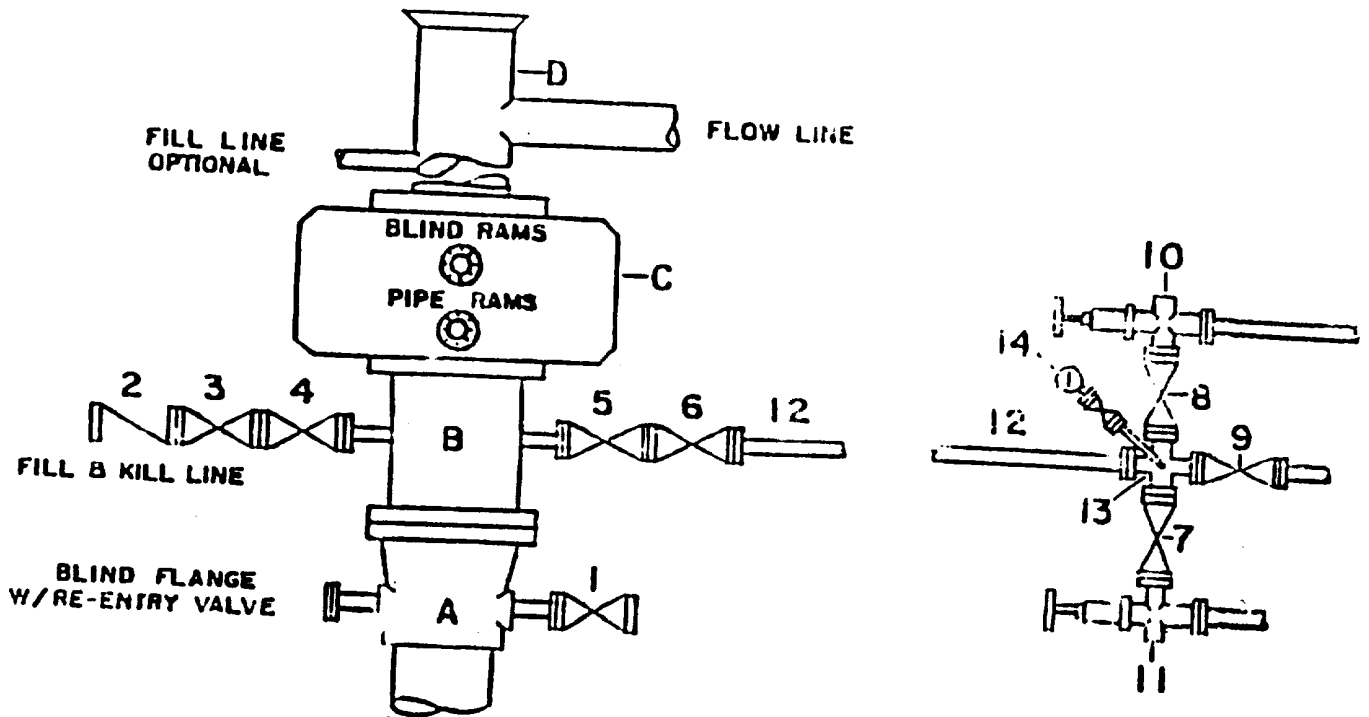
2) DIL



# DRILLING CONTROL

## CONDITION II-3000 PSI WP

DRAWING REVISIONS  
NO. \_\_\_\_\_



### DRILLING CONTROL

#### MATERIAL LIST - CONDITION II

- A Texaco Wellhead
- B 3000# W.P. drilling spool with a 2" minimum flanged outlet for kill-line and 3" minimum flanged outlet for choke line
- C 3000# W.P. Dual ram type preventer, hydraulic operated with 1" steel, 3000# W.P. control lines (where sub-structure height is adequate, 2-3000# W.P. single ram type preventers may be utilized.)
- D Bell nipple with flowline and fill-up outlets. (Kill line may also be used for fill-up line.)
- 1,3,4, 7,8 2" minimum 3000# W.P. flanged full opening steel gate valve, or Halliburton Lo Torc Plug valve.
- 2 2" minimum 3000# W.P. back pressure valve
- 5,6,9 1" minimum 3000# W.P. flanged full opening steel gate valve, or Halliburton Lo Torc Plug valve.
- 12 3" minimum schedule 80, Grade "B", seamless line pipe
- 13 2" minimum x 3" minimum 3000# W.P. flanged cross
- 7, 11 2" minimum 3000# W.P. adjustable choke bodies
- 14 Cameron Mud Gauge or equivalent (location optional in choke line.)

SCALE	DATE	EST. NO.	ORD. NO.
HAWN			
CHECKED BY:			
APPROVED BY:			

**TEXACO, INC.**  
MIDLAND DIVISION  
MIDLAND TEXAS

**EXHIBIT B**