

submitted in lieu of Form 3160-5

UNITED STATES  
DEPARTMENT OF THE INTERIOR  
BUREAU OF LAND MANAGEMENT

Sundry Notices and Reports on Wells

1. Type of Well  
GAS

2. Name of Operator

**BURLINGTON  
RESOURCES**

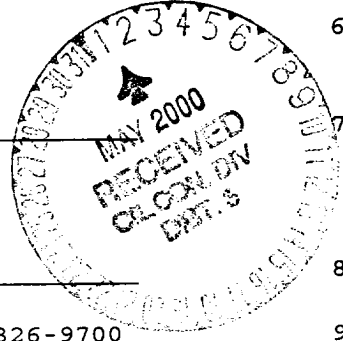
OIL & GAS COMPANY

3. Address & Phone No. of Operator

PO Box 4289, Farmington, NM 87499 (505) 326-9700

4. Location of Well, Footage, Sec., T, R, M

990'FSL, 1460'FWL, Sec.21, T-30-N, R-11-W, NMPM



5. Lease Number  
SF-078138

6. If Indian, All. or  
Tribe Name

7. Unit Agreement Name

8. Well Name & Number  
Fifield #4A

9. API Well No.  
30-045-29438

10. Field and Pool  
*otero*  
WC ~~111W21~~ Chacra/  
Blanco Mesaverde

11. County and State  
San Juan Co, NM

12. CHECK APPROPRIATE BOX TO INDICATE NATURE OF NOTICE, REPORT, OTHER DATA

Type of Submission

Type of Action

- |  |  |  |
|--|--|--|
| <input checked="" type="checkbox"/> Notice of Intent | <input type="checkbox"/> Abandonment             | <input type="checkbox"/> Change of Plans         |
| <input type="checkbox"/> Subsequent Report           | <input checked="" type="checkbox"/> Recompletion | <input type="checkbox"/> New Construction        |
| <input type="checkbox"/> Final Abandonment           | <input type="checkbox"/> Plugging Back           | <input type="checkbox"/> Non-Routine Fracturing  |
|  | <input type="checkbox"/> Casing Repair           | <input type="checkbox"/> Water Shut off          |
|  | <input type="checkbox"/> Altering Casing         | <input type="checkbox"/> Conversion to Injection |
|  | <input type="checkbox"/> Other -                 |  |

13. Describe Proposed or Completed Operations

It is intended to recomplete the subject well in the Chacra formation according to the attached procedure and wellbore diagram.

14. I hereby certify that the foregoing is true and correct.

Signed *Jacqueline Cole* (MQ) Title Regulatory Administrator Date 3/2/00  
TLW

(This space for Federal or State Office use)  
APPROVED BY *Charlie Beecham* Title \_\_\_\_\_ Date APR 26 2000

CONDITION OF APPROVAL, if any:  
Title 18 U.S.C. Section 1001, makes it a crime for any person knowingly and willfully to make to any department or agency of the United States any false, fictitious or fraudulent statements or representations as to any matter within its jurisdiction.

*OK per R-11363*

*✓*

District I  
 PO Box 1980, Hobbs, NM 88241-1980  
 District II  
 PO Drawer 00, Artesia, NM 88211-0719  
 District III  
 1000 Rio Brazos Rd., Aztec, NM 87410  
 District IV  
 PO Box 2088, Santa Fe, NM 87504-2088

State of New Mexico  
 Energy, Minerals & Natural Resources Department

OIL CONSERVATION DIVISION  
 PO Box 2088  
 Santa Fe, NM 87504-2088

Form C-102  
 Revised February 21, 1994  
 Instructions on back  
 Submit to Appropriate District Office  
 State Lease - 4 Copies  
 Fee Lease - 3 Copies

200 1112 -2 PM 1:00

AMENDED REPORT

WELL LOCATION AND ACREAGE DEDICATION PLAN

API Number 30-045-29438		Pool Code 72319/	Pool Name Blanco Mesaverde/WC:30N11W21 Chacra
Property Code 7017	Property Name Fifield		Well Number 4A
OGRID No. 14538	Operator Name BURLINGTON RESOURCES OIL & GAS COMPANY		Elevation 5811'

10 Surface Location

UL or lot no.	Section	Township	Range	Lot Ida	Feet from the	North/South line	Feet from the	East/West line	Comany
N	21	30-N	11-W		990	South	1460	West	S.J.

11 Bottom Hole Location If Different From Surface

UL or lot no.	Section	Township	Range	Lot Ida	Feet from the	North/South line	Feet from the	East/West line	Comany

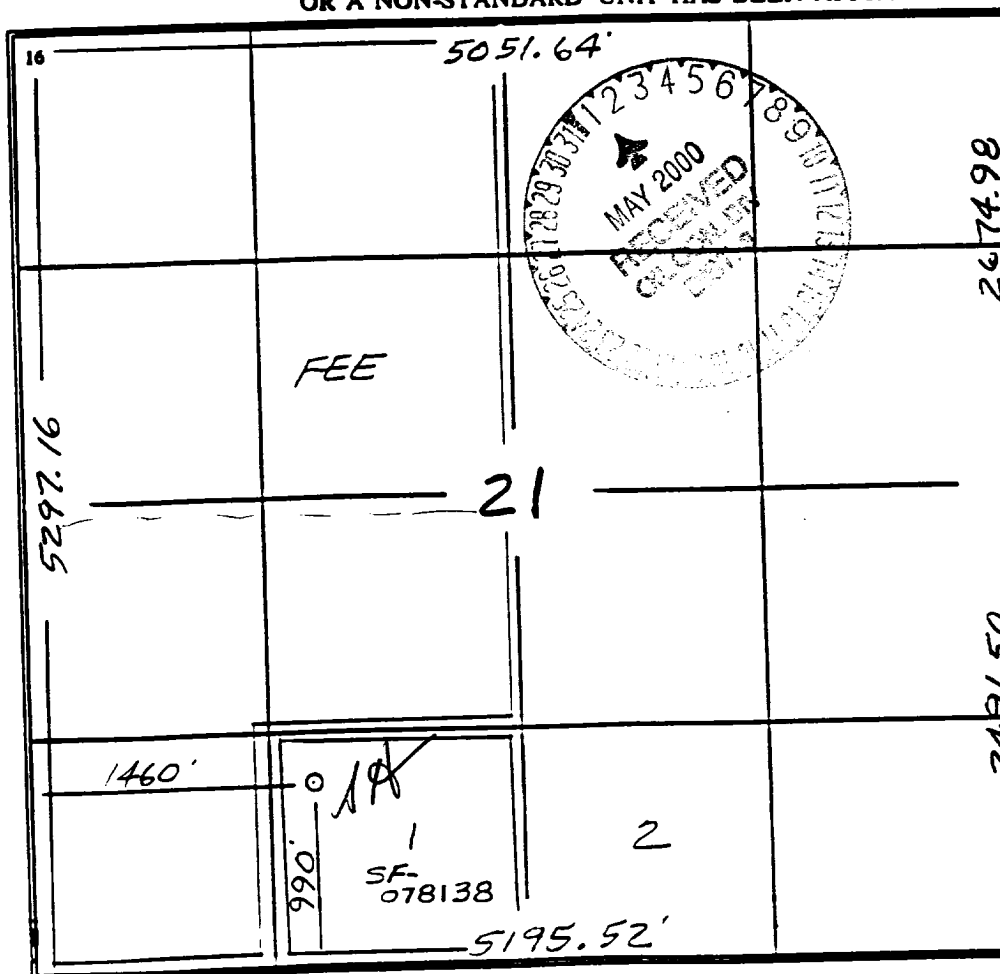
12 Dedicated Acre  
SW/158.47

13 Joint or Infill

14 Consolidation Code

15 Order No.

NO ALLOWABLE WILL BE ASSIGNED TO THIS COMPLETION UNTIL ALL INTERESTS HAVE BEEN CONSOLIDATED OR A NON-STANDARD UNIT HAS BEEN APPROVED BY THE DIVISION



17 OPERATOR CERTIFICATION

I hereby certify that the information contained herein is true and complete to the best of my knowledge and belief.

*Peggy Cole*  
 Signature  
 Peggy Cole  
 Printed Name  
 Regulatory Administrator  
 Title  
 3-2-00  
 Date

18 SURVEYOR CERTIFICATION

I hereby certify that the well location shown on this plan was plotted from field notes of actual surveys made by me or under my supervision, and that the same is true and correct to the best of my belief.

11/05/96

Date of Survey  
 Signature and Seal of Professional Surveyor  
 NEALE C. EDWARDS  
 NEW MEXICO  
 6857  
 6857  
 Certificate Number

# Fifield #4A

Chacra Recompletion Procedure  
Unit N, Section 21, T-30N, R-11 W  
Lat: 36° 47.60' Long: 107° 59.96'

*This well was originally drilled in 1997 and is currently completed in the Menefee and Point Lookout. It is intended to recomplete the Chacra (Lewis Shale) and commingle with the existing production. The Chacra will be sand fracture stimulated in two stages using 100,000 lbs 20/40 sand and 75Q 20 lb linear gel in each stage. Foam will be used to limit fluid damage and aid in the flowback. The flowback choke schedule is to be used to ensure that the proppant remains in the fractures.*

- Comply with all BLM, NMOCD, and BR rules and regulations.
- Hold safety meetings.
- Place fire safety equipment in strategic locations.
- Inspect location and test rig anchors.
- Dig flowback pit or set flowback tank.
- Set and fill 3-400 BBL Frac tanks w/ 2% KCl water. Test and filter if necessary.

### Equipment Needed:

- (3) Frac Tanks with 2% KCl water
- (2) 4-1/2" CIBP
- (1) 4-1/2" RBP
- (1) 4-1/2" Packer

### PROCEDURE:

1. MIRU. Record and report SI pressures on tubing, casing, and bradenhead. Lay blowdown line and blow well down. Kill well with 2% KCl water. ND WH, NU BOP. Test and record operation of rams. NU blooie line and 2-7/8" relief line. Redress production wellhead as needed.
2. TOOH w/ 2-3/8" 4.7# J-55 tubing set at 4514' (SN @ 4479'). Visually inspect tubing, note and report any corrosion and/or scale\*\* in/on tubing. Replace bad joints as needed.

\*\* If tubing is scaled up, contact the production engineer so a scale analysis can be run to determine if an acid treatment is needed.

3. RU wireline. Run 4-1/2" gauge ring to 3670'. If ring tags up before 3670', TIH with 3-7/8" Bit, 4-1/2" 10.5# casing scraper on 2-3/8" tubing and CO to 5112'. TOOH. RIH with 4-1/2" CIBP and wireline set CIBP @ ± 3650'. Load Hole w/ 2% KCl water. Pressure Test Casing to 3000 psi.

4. Correlate to CBL/CCL/GR log and perforate the Lower Chacra as follows using Scallop HSC guns loaded with TAG-4000-311T 23 gm, .42" diameter, 22.2" penetration charges at 1 SPF in the following intervals from bottom up:

**3588-78, 3526-16, 3474-64, 3408-3398, 3346-36, 3303-3293**

RD wireline.

5. TIH with 4-1/2" RBP, on/off tool and 4-1/2" packer on 2-3/8" tubing.

Set RBP at RBP setting depth. PUH ± 10 ft and set Packer. RU stimulation company and pressure test RBP and lines to 3800 psi. Release packer, and reset packer at Packer Setting Depth. Breakdown perforations and establish an injection rate between 8 and 10 BPM with 333 gals of Acetic Acid + 5% NH4Cl \*\*. Breakdown to the **Max pressure of 3800 psi**. Release packer and RBP. Repeat for the remaining intervals.

\*\* All Acid to contain the following additives/ 1000 gal:

1000 gal	10%	Acetic Acid
2 gal	MSA II	corrosion inhibitor
5%	NH <sub>4</sub> CL	clay control

## Fifield #4A

Chacra Recompletion Procedure  
 Unit N, Section 21, T-30N, R-11 W  
 Lat: 36° 47.60' Long: 107° 59.96'

RBP Setting Depth	Packer Setting Depth	Perforation Intervals
3640	3485	3516-26, 3578-88
3510	3360	3398-3408, 3464-74
3390	3230	3293-3303, 3336-46

6. TOOH w/ RBP, Packer, and 2-3/8" tubing.
7. Pressure Test surface lines to 4000 psi. Fracture stimulate Lower Chacra with 100,000 lbs 20/40 sand in 75Q foam w/ 20 lb linear gel at a rate of 35 BPM in 0.5 to 3.0 ppg stages. **Tag sand with 3 radioactive isotopes. Maximum Surface Treating Pressure is 3000 psi.** At 35 BPM friction pressure is approximately 570 psi. Slow rate during flush. Flush to 50' above top perf with 75Q foam.
8. Record ISIP, 5, 10 and 15 shut-in pressure. Shut-in frac valve. RD stimulation company. Install flowback line above frac valve. Lay flowback line to dual-choke manifold and pit. Begin flowback after stimulation company has rigged down from frac valve. Open well to pit on accordance with flowback schedule listed in the table below. Do not shut well in during flowback. When schedule dictates a larger choke size, open ball valve upstream of adjustable choke and open adjustable choke on manifold to pre-determined size listed in table and begin flowing through adjustable choke. Close ball valve upstream of positive flow bean and change out flow bean to next larger size in table. Open ball valve upstream of positive flow bean and begin flowing. Close ball valve upstream of adjustable choke and close adjustable choke.

10/64" Choke	Approximately 2 hrs.
12/64" Choke	Approximately 2 hrs.
14/64" Choke	Approximately 2 hrs.
16/64" Choke	Approximately 3 hrs.
18/64" Choke	Approximately 3 hrs.
20/64" Choke	Approximately 3 hrs.
22/64" Choke	Approximately 3 hrs.
24/64" Choke	Approximately 3 hrs.
32/64" Choke	Approximately 3 hrs.

**NOTE: Follow this schedule to utilize a 24+ hour flowback. If well begins to slug or make large amounts of sand to surface, drop to next lower choke size. If well begins to taper off in liquid production (mostly N<sub>2</sub>), change to next larger choke size before time schedule dictates.**

9. RU wireline. RIH w/ 4-1/2" CIBP and wireline set CIBP @ ± 3280'. Pressure test CIBP and casing to 3000 psi.
10. Correlate to CBL/CCL/GR and perforate the Upper Chacra as follows using Scallop HSC guns loaded with TAG-4000-311T 23 gm, .42" diameter, 22.2" penetration charges at 1 SPF in the following intervals from bottom up:

**3237-27, 3202-3192, 3120-10, 3045-35, 3000-2990, 2952-42**

RD wireline.

11. TIH with 4-1/2" RBP, on/off tool and 4-1/2" packer on 2-3/8" tubing.

Set RBP at RBP setting depth. PUH ± 10 ft and set Packer. RU stimulation company and pressure test RBP and lines to 3800 psi. Release packer, and reset packer at Packer Setting Depth. Breakdown perforations and establish an injection rate between 8 and 10 BPM with 333 gals of Acetic Acid + 5% NH<sub>4</sub>Cl \*\*. Breakdown to the **Max pressure of 3800 psi.** Release packer and RBP. Repeat for the remaining intervals.

## Fifield #4A

Chacra Recompletion Procedure  
 Unit N, Section 21, T-30N, R-11 W  
 Lat: 36° 47.60' Long: 107° 59.96'

\*\* All Acid to contain the following additives/ 1000 gal:

1000 gal	10%	Acetic Acid
2 gal	MSA II	corrosion inhibitor
5%	NH <sub>4</sub> CL	clay control

RBP Setting Depth	Packer Setting Depth	Perforation Intervals
3270	3130	3192-3202, 3227-37
3170	3010	3035-45, 3110-20
3025	2900	2942-52, 2990-3000

12. TOOH w/ RBP, Packer, and 2-3/8" tubing and stand back.
13. Pressure Test surface lines to 4000 psi. Fracture stimulate Upper Chacra with 100,000 lbs 20/40 sand in 75Q foam w/ 20 lb linear gel at a rate of 35 BPM in 0.5 to 3.0 ppg stages. **Tag sand with 3 radioactive isotopes. Maximum Surface Treating Pressure is 3000 psi.** At 35 BPM friction pressure is approximately 450 psi. Slow rate during flush. Flush to 50' above top perf with 75Q foam.
14. Record ISIP, 5, 10 and 15 shut-in pressure. Shut-in frac valve. RD stimulation company. Install flowback line above frac valve. Lay flowback line to dual-choke manifold and pit. Begin flowback after stimulation company has rigged down from frac valve. Open well to pit on accordance with flowback schedule listed in the table below. Do not shut well in during flowback. When schedule dictates a larger choke size, open ball valve upstream of adjustable choke and open adjustable choke on manifold to pre-determined size listed in table and begin flowing through adjustable choke. Close ball valve upstream of positive flow bean and change out flow bean to next larger size in table. Open ball valve upstream of positive flow bean and begin flowing. Close ball valve upstream of adjustable choke and close adjustable choke.

10/64" Choke	Approximately 2 hrs.
12/64" Choke	Approximately 2 hrs.
14/64" Choke	Approximately 2 hrs.
16/64" Choke	Approximately 3 hrs.
18/64" Choke	Approximately 3 hrs.
20/64" Choke	Approximately 3 hrs.
22/64" Choke	Approximately 3 hrs.
24/64" Choke	Approximately 3 hrs.
32/64" Choke	Approximately 3 hrs.

**NOTE: Follow this schedule to utilize a 24+ hour flowback. If well begins to slug or make large amounts of sand to surface, drop to next lower choke size. If well begins to taper off in liquid production (mostly N<sub>2</sub>), change to next larger choke size before time schedule dictates.**

15. TIH w/ 3-7/8" bit on 2-3/8" tubing and CO to CIBP @ 3280'. Monitor gas and water returns. When sand and water allow (less than 5 BPH and trace sand), take a Upper Chacra pitot gauge. DO CIBP @ 3280' with a minimum of 12 BPH mist rate.
16. CO to CIBP @ 3650'. Monitor gas and water returns. When sand and water allow (less than 5 BPH and trace sand), take a complete Chacra pitot gauge. DO CIBP @ 3650' with a minimum of 12 BPH mist rate.
17. Continue to CO to PBSD with air. Blow well at PBSD and monitor water rates. If needed continue to blow well for clean up. When water rates are below 5 BPH and there is no sand production, TOOH.

# Fifield #4A

Chacra Recompletion Procedure  
Unit N, Section 21, T-30N, R-11 W  
Lat: 36° 47.60' Long: 107° 59.96'

18. TIH with an expendable check, one 2-3/8" joint, seating nipple, and remaining production tubing. Broach tubing while running in hole. CO with air/mist to PBTD again, if necessary. Obtain final pitot gauge. Land tubing at  $\pm$  4780'. ND BOP. NU WH. Pump off expendable check. RDMO. Contact Production Operations for well tie-in.
19. RU Pro-Technics. Run After Frac Log across Chacra (3700' – 2800'). RD Pro-Technics.

Recommended: Michele Quisel  
Production Engineer  
1-12-00

Approved: RJ Burt 1/24/00  
Drilling Superintendent

Approved: [Signature] 1/12/00  
Team Leader

### Contact:

Michele Quisel 324-6162 (WORK)      326-8196(PAGER)      564-9097(HOME)

Vendors:	Wireline:	Basin	327-5244
	RA Tagging:	Pro-Technics	326-7133

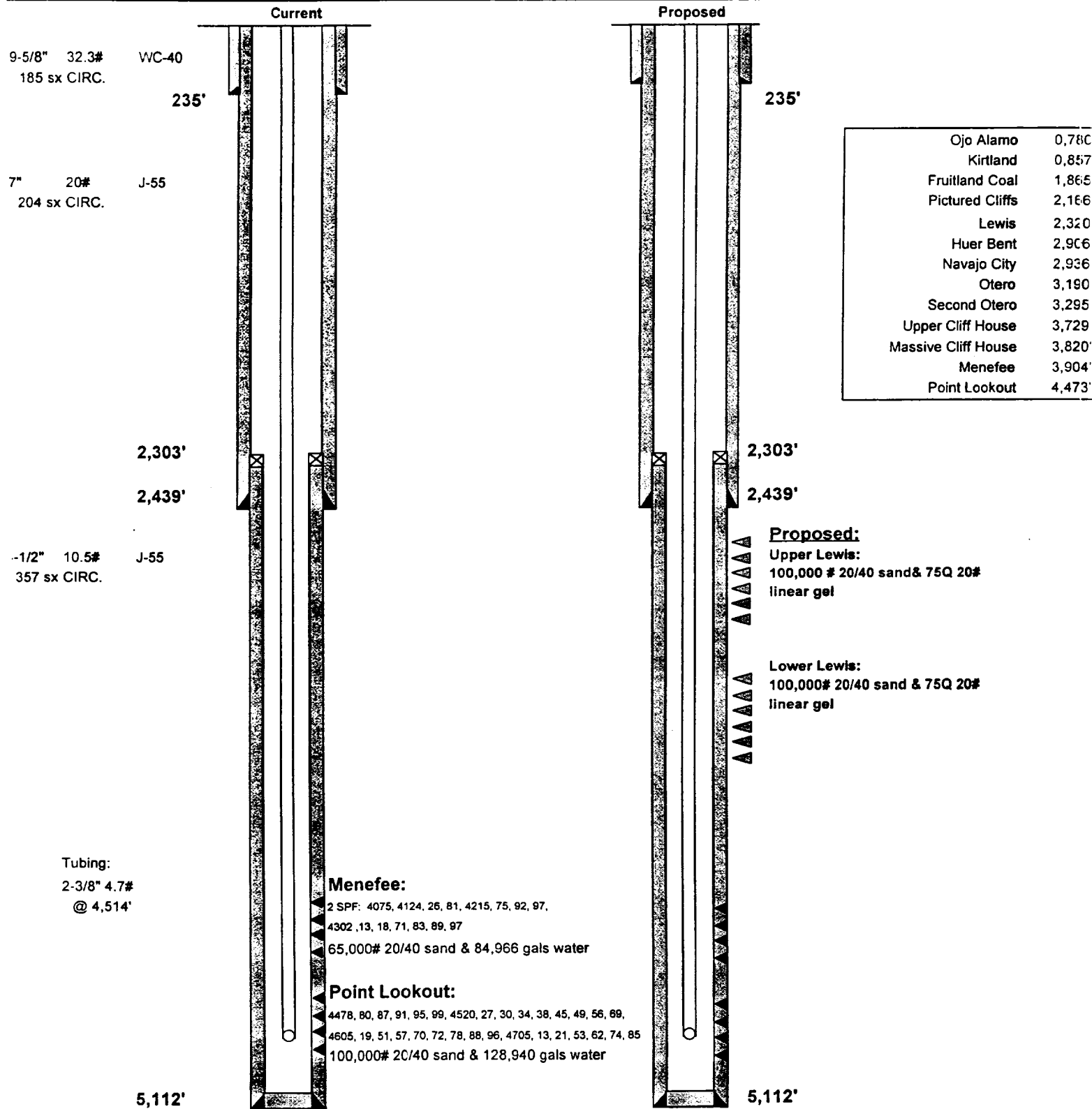
**Well #4A**  
 990' FSL, 1460' FWL  
 Unit N Sec.21, T-30 R-11W  
 San Juan County, New Mexico

KB 5825

GL 5811

Lat: 36o 47.60'

Long: 107o 59.96'



PBTD = 5,112'  
 TD= 5,120'

01/12/2000

MSQ