

UNITED STATES
DEPARTMENT OF THE INTERIOR
BUREAU OF LAND MANAGEMENT

RECEIVED
SEP 26 1997

APPLICATION FOR PERMIT TO DRILL, DEEPEN, OR PLUG BACK

1a. Type of Work ST AUG 22 AM 11:40
DRILL
070 FARMINGTON, NM

5. Lease Number SF-078511A
Unit Reporting Number

OIL CON. DIV.
DIST. 3

1b. Type of Well
GAS

6. If Indian, All. or Tribe

2. Operator
**BURLINGTON
RESOURCES** Oil & Gas Company
14538

7. Unit Agreement Name

3. Address & Phone No. of Operator
PO Box 4289, Farmington, NM 87499

(505) 326-9700

8. Farm or Lease Name
7407 Quinn
9. Well Number ☒
3A

4. Location of Well
1820' FNL, 1595' FWL

Latitude 36° 54.0, Longitude 107° 42.1

10. Field, Pool, Wildcat
72319 Blanco Mesa Verde ☒
11. Sec., Twn, Rge, Mer. (NMPM)
F Sec 17, T-31-N, R-8-W
API # 30-045-2943 ☒

14. Distance in Miles from Nearest Town
6 miles to Navajo Dam

12. County San Juan 13. State NM

15. Distance from Proposed Location to Nearest Property or Lease Line
1595'

16. Acres in Lease

17. Acres Assigned to Well
320 W/2

18. Distance from Proposed Location to Nearest Well, Drlg, Compl, or Applied for on this Lease
700'

19. Proposed Depth 6027'
This action is subject to technical and
procedural review pursuant to 43 CFR 3165.3
and appeal pursuant to 43 CFR 3165.4.

20. Rotary or Cable Tools
Rotary

21. Elevations (DF, FT, GR, Etc.)
6441' GR

22. Approx. Date Work will Start

23. Proposed Casing and Cementing Program
See Operations Plan attached

DRILLING OPERATIONS AUTHORIZED ARE
SUBJECT TO COMPLIANCE WITH ATTACHED
"GENERAL REQUIREMENTS"

24. Authorized by: [Signature]
Regulatory/Compliance Administrator

8-12-97
Date

PERMIT NO. _____

APPROVAL DATE SEP 24 1997

APPROVED BY S/ Duane W. Spencer

TITLE _____

DATE SEP 24 1997

Archaeological Report to be submitted by Arboles Contract Archaeology
Threatened and Endangered Species Report to be submitted
NOTE: APD approved 7-3-91 for this well in this 1/4 section

NMOCD

District I
PO Box 1980, Hobbs, NM 88241-1980

District II
PO Drawer 00, Artesia, NM 88211-0719

District III
1000 Rio Brazos Rd., Aztec, NM 87410

District IV
PO Box 2088, Santa Fe, NM 87504-2088

State of New Mexico
Energy, Minerals & Natural Resources Department

OIL CONSERVATION DIVISION
PO Box 2088
Santa Fe, NM 87504-2088

Form C-1
Revised February 21, 1977
Instructions on back
Submit to Appropriate District Office
State Lease - 4 Copies
Fee Lease - 3 Copies

97 AUG 22 11:11:40

☐ AMENDED REPORT

WELL LOCATION AND ACREAGE DEDICATION PLAT
070 BURLINGTON, NM

*API Number	*Pool Code	*Pool Name
30-045-	72319	Blanco Mesaverde
*Property Code	*Property Name	*Well Number
7407	QUINN	3A
*GRID No.	*Operator Name	*Elevation
14538	BURLINGTON RESOURCES OIL & GAS COMPANY	6441'

10 Surface Location

UL or lot no.	Section	Township	Range	Lot Idn	Feet from the	North/South line	Feet from the	East/West line	County
F	17	31	8		1820	North	1595	West	SAN JUA

11 Bottom Hole Location If Different From Surface

UL or lot no.	Section	Township	Range	Lot Idn	Feet from the	North/South line	Feet from the	East/West line	County

12 Dedicated Acres	13 Joint or Infill	14 Consolidation Code	15 Order No.
W/320			

NO ALLOWABLE WILL BE ASSIGNED TO THIS COMPLETION UNTIL ALL INTERESTS HAVE BEEN CONSOLIDATED OR A NON-STANDARD UNIT HAS BEEN APPROVED BY THE DIVISION

16	5334.78'	17 OPERATOR CERTIFICATION
1820'		I hereby certify that the information contained herein is true and complete to the best of my knowledge and belief.
1595		Signature: <i>Peggy Bradfield</i>
USA-SF-078511A		Printed Name: Peggy Bradfield
5230.50'		Regulatory Administrator Title: 8-12-97
USA-SF-078511		Date: 8-12-97
17		18 SURVEYOR CERTIFICATION
5235.12'		I hereby certify that the well location shown on this plat was plotted from field notes of actual surveys made by me or under my supervision, and that the same is true and correct to the best of my belief.
		3-19
		Date of Survey: 3-19
		Signature: <i>NEALE C. EDWARDS</i>
		6857
		Certificate Number: 6857

OPERATIONS PLAN

Well Name: Quinn #3A
Location: 1820' FNL, 1595' FWL Section 17, T-31-N, R-8-W
Rio Arriba County, New Mexico
Latitude 36° 54.0, Longitude 107° 42.1
Formation: Blanco Mesa Verde
Elevation: 6441' GL

<u>Formation Tops:</u>	<u>Top</u>	<u>Bottom</u>	<u>Contents</u>
Surface	San Jose	2070'	aquifer
Ojo Alamo	2070'	2825'	aquifer
Fruitland	2825'	3323'	
Pictured Cliffs	3323'	3443'	gas
Lewis	3443'	4078'	gas
Intermediate TD	3543'		
Mesa Verde	4078'	4253'	gas
Chacra	4253'	5268'	gas
Massive Cliff House	5268'	5316'	gas
Menefee	5316'	5627'	gas
Massive Point Lookout	5627'		gas
Total Depth	6027'		

Logging Program:

Cased hole logging - Gamma Ray Neutron
Coring/DST - none

Mud Program:

<u>Interval</u>	<u>Type</u>	<u>Weight</u>	<u>Vis.</u>	<u>Fluid Loss</u>
0- 200'	Spud	8.4-9.0	40-50	no control
200-3543'	LSND	8.4-9.0	30-60	no control
3543-6027'	Gas/Mist	n/a	n/a	n/a

Pit levels will be visually monitored to detect gain or loss of fluid control.

Casing Program (as listed, the equivalent, or better):

<u>Hole Size</u>	<u>Depth Interval</u>	<u>Csg. Size</u>	<u>Wt.</u>	<u>Grade</u>
12 1/4"	0' - 200'	9 5/8"	32.3#	H-40
8 3/4"	0' - 3543'	7"	20.0#	J-55
6 1/4"	3443' - 6027'	4 1/2"	10.5#	J-55

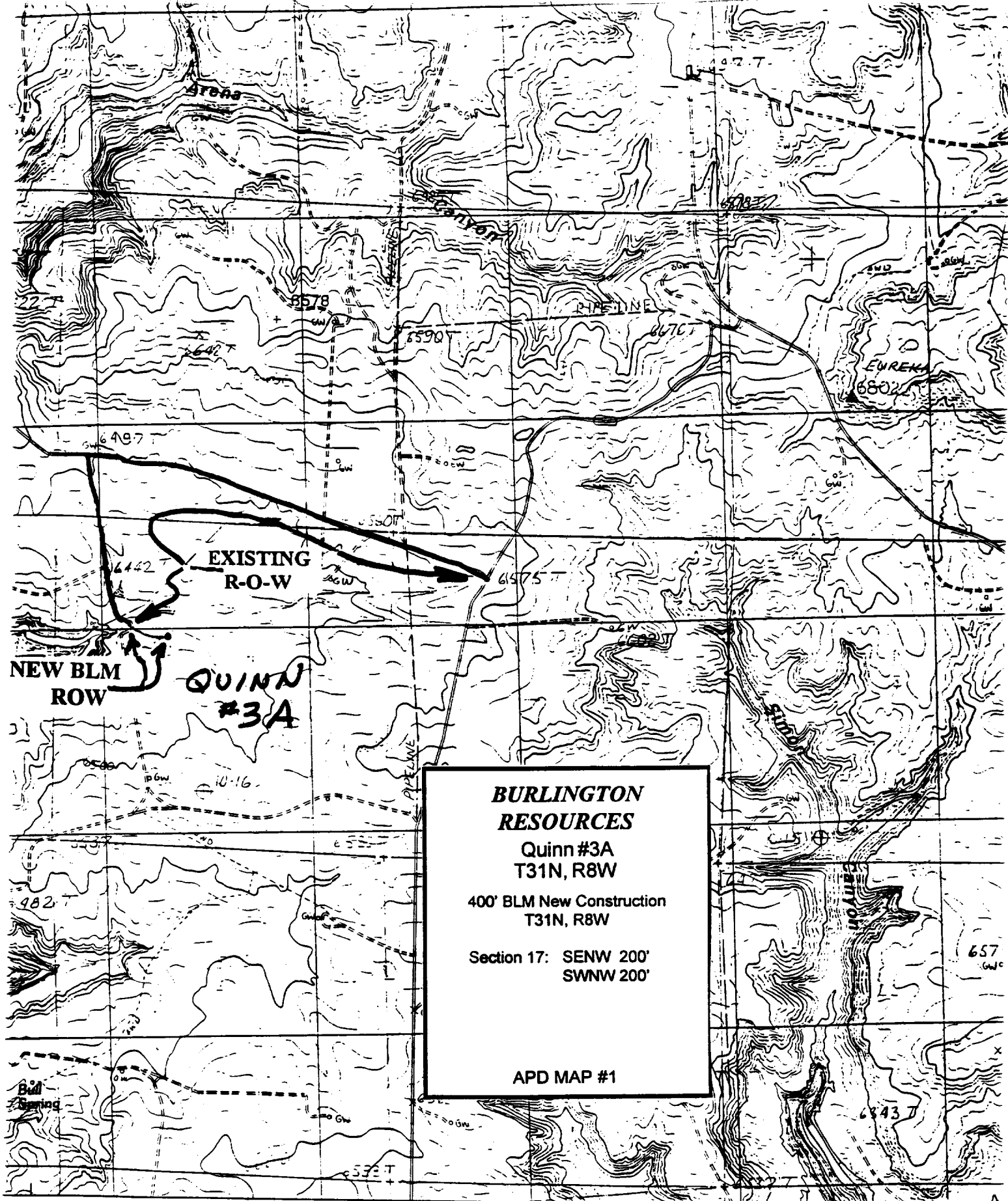
Tubing Program:

0' - 6027' 2 3/8" 4.7# J-55

BOP Specifications, Wellhead and Tests:

Surface to Intermediate TD -

11" 2000 psi minimum double gate BOP stack (Reference Figure #1).
After nipple-up prior to drilling out surface casing, rams and casing will be tested to 600 psi for 30 minutes.



**BURLINGTON
RESOURCES**
Quinn #3A
T31N, R8W
400' BLM New Construction
T31N, R8W
Section 17: SENW 200'
SWNW 200'

APD MAP #1

