

Caller Service 4104
Farmington, New Mexico 87400

FEB 19 1986

RECEIVED
EEB 20 1986
OIL CON. DIV.
DIST. 3

CERTIFICATE--BRIEF RECEIPT REQUESTED

Unico Texas Petroleum Corporation
4001 Price-Field Highway, Box 11
Farmington, NM 87401

Gentlemen:

Enclosed are your Applications for Permit to Drill (APDs) for the following wells:

1. No. 18 Newcom "A", sec. 15, T. 26 N., R. 8 W., San Juan County, New Mexico, lease SP-078430.
2. No. 18 Newcom "A", sec. 10, T. 26 N., R. 8 W., San Juan County, New Mexico, lease SP-078430.
3. No. 1A Jaccuss, sec. 6, T. 31 N., R. 8 W., San Juan County, New Mexico, lease SP-078510.
4. No. 2A Gward, sec. 7, T. 31 N., R. 8 W., San Juan County, New Mexico, lease SP-078510.
5. No. 3A Gulm, sec. 17, T. 31 N., R. 8 W., San Juan County, New Mexico, lease SP-078510.
6. No. 4A Hombaus, sec. 12, T. 31 N., R. 8 W., San Juan County, New Mexico, lease SP-078506.
7. No. 1A Lodi, sec. 13, T. 31 N., R. 8 W., San Juan County, New Mexico, lease SP-078506.
8. No. 2A Seymour, sec. 24, T. 31 N., R. 8 W., San Juan County, New Mexico, lease SP-078505.
9. No. 1A Lodi, sec. 13, T. 31 N., R. 8 W., San Juan County, New Mexico, lease SP-078505.

ABANDONED LOCATION

UNITED STATES
DEPARTMENT OF THE INTERIOR
BUREAU OF LAND MANAGEMENT

APPLICATION FOR PERMIT TO DRILL, DEEPEN, OR PLUG BACK

1a. TYPE OF WORK

DRILL ☒

DEEPEN ☐

PLUG BACK ☐

b. TYPE OF WELL

OIL
WELL ☐

GAS
WELL ☒

OTHER

SINGLE
ZONE ☒

MULTIPLE
ZONE ☐

2. NAME OF OPERATOR

Union Texas Petroleum Corporation

3. ADDRESS OF OPERATOR

P.O. Box 1290, Farmington, New Mexico 87499

4. LOCATION OF WELL (Report location clearly and in accordance with any State requirements.)*

At surface

1450' FNL; 1061' FWL

At proposed prod. zone

Same as above

14. DISTANCE IN MILES AND DIRECTION FROM NEAREST TOWN OR POST OFFICE*

9 miles Northwest of Navajo Dam, New Mexico

15. DISTANCE FROM PROPOSED*

LOCATION TO NEAREST
PROPERTY OR LEASE LINE, FT.
(Also to nearest drlg. unit line, if any)

1061'

1061'

18. DISTANCE FROM PROPOSED LOCATION*

TO NEAREST WELL, DRILLING, COMPLETED,
OR APPLIED FOR, ON THIS LEASE, FT.

2864'

16. NO. OF ACRES IN LEASE

1407.19 2047.19

19. PROPOSED DEPTH

5730

17. NO. OF ACRES ASSIGNED
TO THIS WELL

332.94 W/2 Sec. 6 & NW/4 Sec. 7

20. ROTARY OR CABLE TOOLS

Rotary

21. ELEVATIONS (Show whether DF, RT, GR, etc.) DRILLING OPERATIONS AUTHORIZED ARE

6164 GR (Ungraded)

SUBJECT TO COMPLIANCE WITH ATTACHED

23.

"GENERAL REQUIREMENTS"

PROPOSED CASING AND CEMENTING PROGRAM

22. APPROX. DATE WORK WILL START*

September 10, 1984

This action is subject to administrative
appeal pursuant to 30 CFR 290.1
QUANTITY OF CEMENT

SIZE OF HOLE	SIZE OF CASING	WEIGHT PER FOOT	SETTING DEPTH	QUANTITY OF CEMENT
12-1/4	New 9-5/8"H40	36.0 #	(±) 300'	236cu.ft. CL "B" w/2% CaCl ₂ circ.
8-1/2	New 7" K55	23.0 #	(±) 4000'	888cu.ft. POZ 6% Gel, 4740#
6-1/8	New 4-1/2"J55	10.5 #	3850' to 5730'	Gilsonite Circulated 310cu.ft. 50-50 POZ 4% Gel 1212# Gilsonite Circulated

We desire to drill this well to the above described program. We are cementing surface pipe in place we will W.O.C. and pressure test the pipe. Drill out to intermediate T.R. using mud as the circulating medium. Run pipe and cement in place and wait in cement. Pressure test the pipe. Drill to total depth using gas as the circulating medium log the well and set a liner from approx. 3850' to 5730' using a liner hanger, and cement in place. Clean out the well-up then pressure test the casing and perforate and fracture the Mesaverde zone. Then the well-up then run new 2-3/8", J55 tubing to the production zone and nipple down the wellhead. Test the well and connect to a gathering system.

RECEIVED

JUL 3 1984

IN ABOVE SPACE DESCRIBE PROPOSED PROGRAM: If proposal is to deepen or plug back, give data on present production zone and proposed new productive zone. If proposal is to drill or deepen directionally, give pertinent data on subsurface locations and measured and true vertical depths. Give blowout preventer program, if any.

24.

SIGNED

Rudy D. Motto

TITLE Area Operation Manager

DATE

AS AMENDED 1984

(This space for Federal or State office use)

PERMIT NO.

APPROVAL DATE

APPROVED BY

TITLE

CONDITIONS OF APPROVAL, IF ANY:

NSI R-392

NMOCC

*See Instructions On Reverse Side

All distances must be from the outer boundaries of the Section.

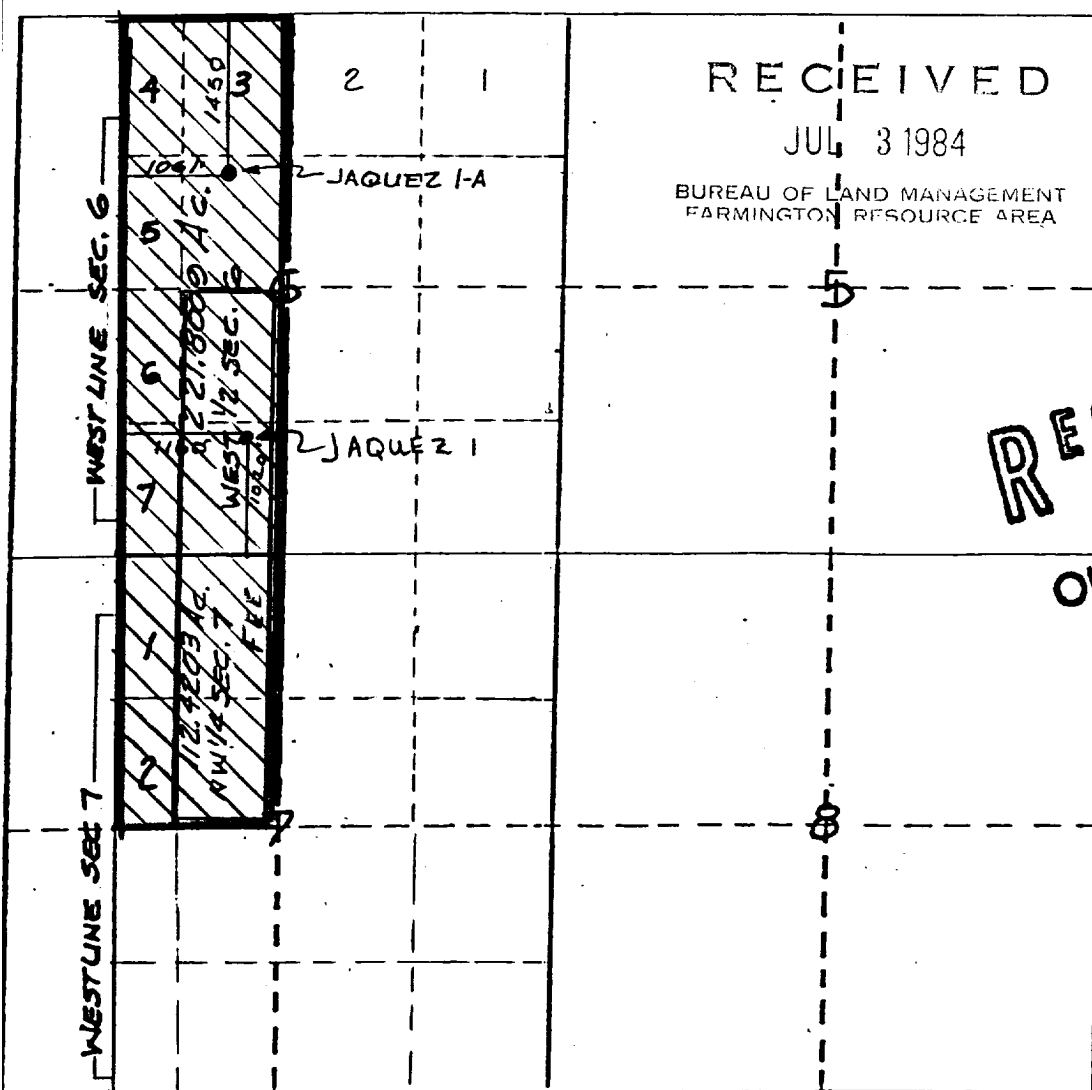
Operator UNION TEXAS PETROLEUM CORPORATION			Lease JAQUEZ		Well No. 1A
Unit Letter F	Section 6	Township 31 NORTH	Range 8 WEST	County SAN JUAN	
Actual Footage Location of Well: 1450 feet from the NORTH line and 1061 feet from the WEST line					
Ground Level Elev. 6164	Producing Formation Mesaverde		Pool Blanco	Dedicated Acreage: W/2 Sec 6 332.94 NW/4 Sec 7	

1. Outline the acreage dedicated to the subject well by colored pencil or hatchure marks on the plat below.
2. If more than one lease is dedicated to the well, outline each and identify the ownership thereof (both as to working interest and royalty).
3. If more than one lease of different ownership is dedicated to the well, have the interests of all owners been consolidated by communitization, unitization, force-pooling, etc?

☒ Yes ☐ No If answer is "yes," type of consolidation Communitization No. 14-08-001-3852

If answer is "no," list the owners and tract descriptions which have actually been consolidated. (Use reverse side of this form if necessary.)

No allowable will be assigned to the well until all interests have been consolidated (by communitization, unitization, forced-pooling, or otherwise) or until a non-standard unit, eliminating such interests, has been approved by the Division



CERTIFICATION

I hereby certify that the information contained herein is true and complete to the best of my knowledge and belief.

Name Rudy D. Motto
Position Area Operations Manager
Company Union Texas Petroleum Corp.

Date June 29, 1984

RECEIVED
AUG 1 1984
OIL CON. DIV.
DIST. 3

I hereby certify that the well location shown on this plat was plotted from field notes made by me or under my supervision, and that the same is true to the best of my knowledge and belief.

Date November 9, 1983

Registered Professional Engineer and/or Land Surveyor

Michael Daly

Certificate No.

5992

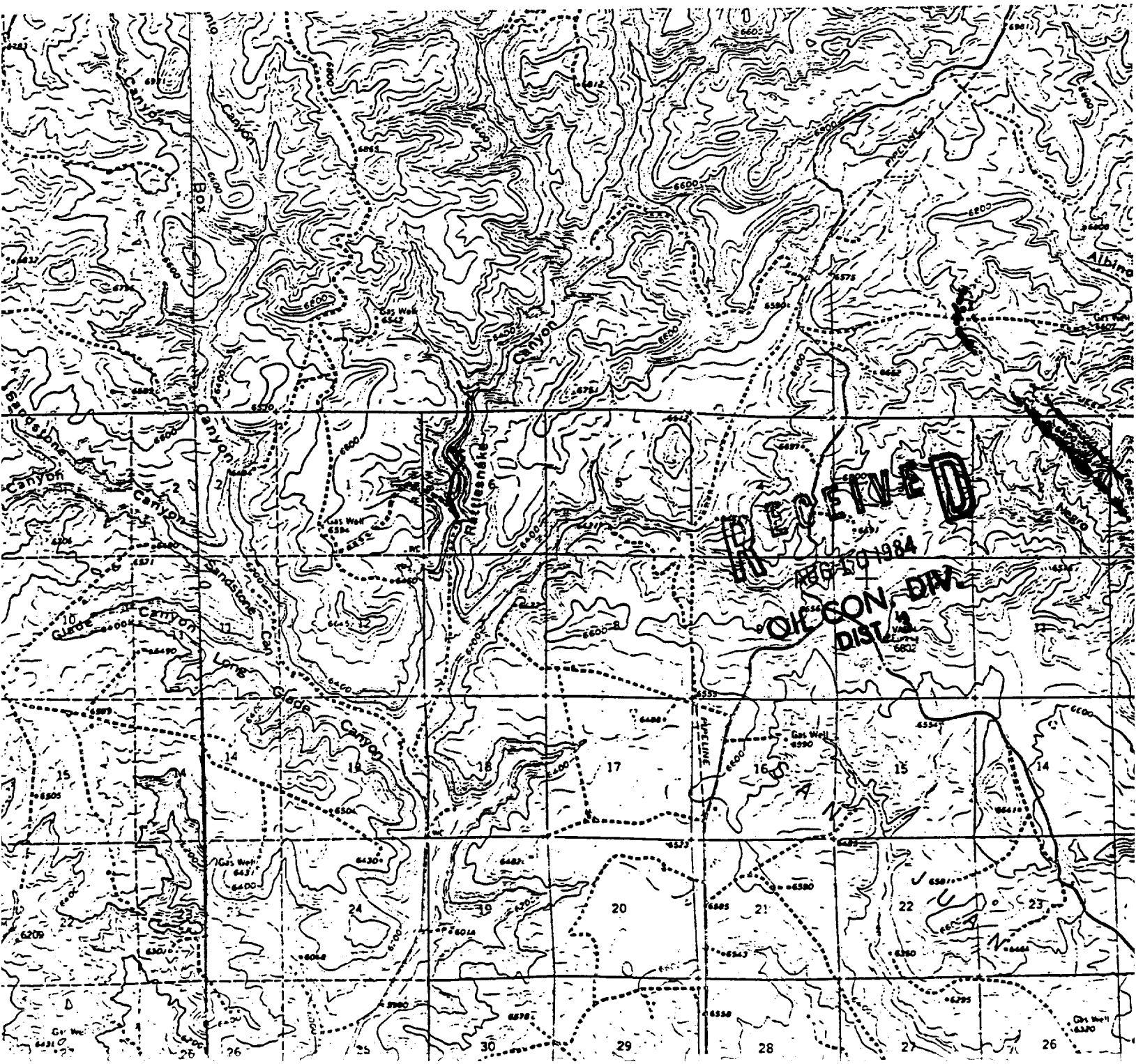
LEASE: SF 078510

JACQUEZ # 1A

1450' FNL & 1061' FWL (footages are standard, as this
SEC. 6, T31N, R8W Section is abnormally small E to W)
SAN JUAN COUNTY, N.M.

ACCESS: A total of 2100' of new road will be needed, of which
1300' is on Federal and 800' is on Private land.

TOPO : This map has been updated in the area where the well site
is perposed to show the area as it is now to include an
extention of the existing road from the bottom of the canyon
to the top of the mesa. ==





1. *Chlorophyll a* (Chl *a*)
 2. *Chlorophyll b* (Chl *b*)
 3. *Chlorophyll c* (Chl *c*)
 4. *Chlorophyll d* (Chl *d*)
 5. *Chlorophyll e* (Chl *e*)
 6. *Chlorophyll f* (Chl *f*)
 7. *Chlorophyll g* (Chl *g*)
 8. *Chlorophyll h* (Chl *h*)
 9. *Chlorophyll i* (Chl *i*)
 10. *Chlorophyll j* (Chl *j*)
 11. *Chlorophyll k* (Chl *k*)
 12. *Chlorophyll l* (Chl *l*)
 13. *Chlorophyll m* (Chl *m*)
 14. *Chlorophyll n* (Chl *n*)
 15. *Chlorophyll o* (Chl *o*)
 16. *Chlorophyll p* (Chl *p*)
 17. *Chlorophyll q* (Chl *q*)
 18. *Chlorophyll r* (Chl *r*)
 19. *Chlorophyll s* (Chl *s*)
 20. *Chlorophyll t* (Chl *t*)
 21. *Chlorophyll u* (Chl *u*)
 22. *Chlorophyll v* (Chl *v*)
 23. *Chlorophyll w* (Chl *w*)
 24. *Chlorophyll x* (Chl *x*)
 25. *Chlorophyll y* (Chl *y*)
 26. *Chlorophyll z* (Chl *z*)
 27. *Chlorophyll aa* (Chl *aa*)
 28. *Chlorophyll ab* (Chl *ab*)
 29. *Chlorophyll ac* (Chl *ac*)
 30. *Chlorophyll ad* (Chl *ad*)
 31. *Chlorophyll ae* (Chl *ae*)
 32. *Chlorophyll af* (Chl *af*)
 33. *Chlorophyll ag* (Chl *ag*)
 34. *Chlorophyll ah* (Chl *ah*)
 35. *Chlorophyll ai* (Chl *ai*)
 36. *Chlorophyll aj* (Chl *aj*)
 37. *Chlorophyll ak* (Chl *ak*)
 38. *Chlorophyll al* (Chl *al*)
 39. *Chlorophyll am* (Chl *am*)
 40. *Chlorophyll an* (Chl *an*)
 41. *Chlorophyll ao* (Chl *ao*)
 42. *Chlorophyll ap* (Chl *ap*)
 43. *Chlorophyll aq* (Chl *aq*)
 44. *Chlorophyll ar* (Chl *ar*)
 45. *Chlorophyll as* (Chl *as*)
 46. *Chlorophyll at* (Chl *at*)
 47. *Chlorophyll au* (Chl *au*)
 48. *Chlorophyll av* (Chl *av*)
 49. *Chlorophyll aw* (Chl *aw*)
 50. *Chlorophyll ax* (Chl *ax*)
 51. *Chlorophyll ay* (Chl *ay*)
 52. *Chlorophyll az* (Chl *az*)
 53. *Chlorophyll aza* (Chl *aza*)
 54. *Chlorophyll abz* (Chl *abz*)
 55. *Chlorophyll acz* (Chl *acz*)
 56. *Chlorophyll adz* (Chl *adz*)
 57. *Chlorophyll aez* (Chl *aez*)
 58. *Chlorophyll afz* (Chl *afz*)
 59. *Chlorophyll agz* (Chl *agz*)
 60. *Chlorophyll ahz* (Chl *ahz*)
 61. *Chlorophyll aiz* (Chl *aiz*)
 62. *Chlorophyll ajz* (Chl *ajz*)
 63. *Chlorophyll akz* (Chl *akz*)
 64. *Chlorophyll alz* (Chl *alz*)
 65. *Chlorophyll amz* (Chl *amz*)
 66. *Chlorophyll anz* (Chl *anz*)
 67. *Chlorophyll aoz* (Chl *aoz*)
 68. *Chlorophyll apz* (Chl *apz*)
 69. *Chlorophyll aqz* (Chl *aqz*)
 70. *Chlorophyll arz* (Chl *arz*)
 71. *Chlorophyll asz* (Chl *asz*)
 72. *Chlorophyll atz* (Chl *atz*)
 73. *Chlorophyll auz* (Chl *auz*)
 74. *Chlorophyll avz* (Chl *avz*)
 75. *Chlorophyll awz* (Chl *awz*)
 76. *Chlorophyll axz* (Chl *axz*)
 77. *Chlorophyll ayz* (Chl *ayz*)
 78. *Chlorophyll ayz* (Chl *ayz*)
 79. *Chlorophyll azz* (Chl *azz*)
 80. *Chlorophyll azaa* (Chl *aza*)
 81. *Chlorophyll abz* (Chl *abz*)
 82. *Chlorophyll acz* (Chl *acz*)
 83. *Chlorophyll adz* (Chl *adz*)
 84. *Chlorophyll aez* (Chl *aez*)
 85. *Chlorophyll afz* (Chl *afz*)
 86. *Chlorophyll agz* (Chl *agz*)
 87. *Chlorophyll ahz* (Chl *ahz*)
 88. *Chlorophyll aiz* (Chl *aiz*)
 89. *Chlorophyll ajz* (Chl *ajz*)
 90. *Chlorophyll akz* (Chl *akz*)
 91. *Chlorophyll alz* (Chl *alz*)
 92. *Chlorophyll amz* (Chl *amz*)
 93. *Chlorophyll anz* (Chl *anz*)
 94. *Chlorophyll aoz* (Chl *aoz*)
 95. *Chlorophyll apz* (Chl *apz*)
 96. *Chlorophyll aqz* (Chl *aqz*)
 97. *Chlorophyll arz* (Chl *arz*)
 98. *Chlorophyll asz* (Chl *asz*)
 99. *Chlorophyll atz* (Chl *atz*)
 100. *Chlorophyll auz* (Chl *auz*)
 101. *Chlorophyll avz* (Chl *avz*)
 102. *Chlorophyll awz* (Chl *awz*)
 103. *Chlorophyll axz* (Chl *axz*)
 104. *Chlorophyll ayz* (Chl *ayz*)
 105. *Chlorophyll ayz* (Chl *ayz*)
 106. *Chlorophyll azz* (Chl *azz*)
 107. *Chlorophyll azaa* (Chl *aza*)
 108. *Chlorophyll abz* (Chl *abz*)
 109. *Chlorophyll acz* (Chl *acz*)
 110. *Chlorophyll adz* (Chl *adz*)
 111. *Chlorophyll aez* (Chl *aez*)
 112. *Chlorophyll afz* (Chl *afz*)
 113. *Chlorophyll agz* (Chl *agz*)
 114. *Chlorophyll ahz* (Chl *ahz*)
 115. *Chlorophyll aiz* (Chl *aiz*)
 116. *Chlorophyll ajz* (Chl *ajz*)
 117. *Chlorophyll akz* (Chl *akz*)
 118. *Chlorophyll alz* (Chl *alz*)
 119. *Chlorophyll amz* (Chl *amz*)
 120. *Chlorophyll anz* (Chl *anz*)
 121. *Chlorophyll aoz* (Chl *aoz*)
 122. *Chlorophyll apz* (Chl *apz*)
 123. *Chlorophyll aqz* (Chl *aqz*)
 124. *Chlorophyll arz* (Chl *arz*)
 125. *Chlorophyll asz* (Chl *asz*)
 126. *Chlorophyll atz* (Chl *atz*)
 127. *Chlorophyll auz* (Chl *auz*)
 128. *Chlorophyll avz* (Chl *avz*)
 129. *Chlorophyll awz* (Chl *awz*)
 130. *Chlorophyll axz* (Chl *axz*)
 131. *Chlorophyll ayz* (Chl *ayz*)
 132. *Chlorophyll ayz* (Chl *ayz*)
 133.

F

30-045-26062

8-10-84

F. Loc. 1450/N; 1061/W Elev. 6164 GL Spd. _____ Comp. _____ TD _____ PB _____
 Casing S. _____ @ _____ W _____ Cu. ft. _____
 Csg. Perf. _____ @ _____ W _____ Sx. Int. _____ @ _____ W _____ Sx. Pr. _____ @ _____ W _____ Sx. T. _____ @ _____
 Prod. Stim. _____

I.P. _____ 80/D _____ MCF/D After _____ Hrs. SICP _____ PSI After _____ Days GOR _____ Grav. _____ 1st Del. Gas _____
 1st Del. Oil _____

TOPS	NiTD X	Well Log	TEST DATA							Ref.No.
Ojo Alamo	C-103	Plat X	Schd.	PC	Q	PW	PD	D		
Kirtland	C-104	Electric Log								
Fruitland		C-122								
Pictured Cliffs	Ditr	Dfa								
Chacra	Datr	Dac								
Cliff House	<p>Albuquerque</p> <p>NSP-R-392</p> <p>W/332.94 Acres</p>									
Menefee										
Point Lookout										
Mancos										
Gallup										
Greenhorn										
Dakota										
Entrada										

P
o
o
i

Blanco MV Co. SJ S 6 T 31N R 8W UF Oper. Union Texas Pet. Corp. Jacquez No. 1A

Jacquez #1A

F-6-31N-8W

UNION TEXAS PETROLEUM CORP.