


UNITED STATES
DEPARTMENT OF THE INTERIOR
BUREAU OF LAND MANAGEMENT

RECEIVED
OCT - 6 1997
OIL CON. DIV.
DIST. 8

APPLICATION FOR PERMIT TO DRILL, DEEPEN, OR PLUG BACK

1a. Type of Work DRILL	57 AUG 22 AM 11:33 070 FARMINGTON, NM	5. Lease Number SF-078510 Unit Reporting Number
1b. Type of Well GAS		6. If Indian, All. or Tribe
2. Operator BURLINGTON RESOURCES Oil & Gas Company 14538		7. Unit Agreement Name
3. Address & Phone No. of Operator PO Box 4289, Farmington, NM 87499 (505) 326-9700		8. Farm or Lease Name 7156 Jaquez ✓ 9. Well Number 1A ✓
4. Location of Well 1620' FNL, 1195' FWL Latitude 36° 54.9, Longitude 107° 42.2		10. Field, Pool, Wildcat 72319 Blanco Mesa Verde ✓ 11. Sec., Twn, Rge, Mer. (NMPM) F Sec 6, T-31-N, R-8-W API # 30-045-29494 ✓
14. Distance in Miles from Nearest Town 8 miles to Abe's Store	12. County San Juan	13. State NM
15. Distance from Proposed Location to Nearest Property or Lease Line 1195'		
16. Acres in Lease	17. Acres Assigned to Well 332.94 ✓	
18. Distance from Proposed Location to Nearest Well, Drig, Compl, or Applied for on this Lease 1500'		
19. Proposed Depth 5761	This action is subject to technical and procedural review pursuant to 43 CFR 3165.3 and appeal pursuant to 43 CFR 3165.4.	
20. Rotary or Cable Tools Rotary		
21. Elevations (DF, FT, GR, Etc.) 6169' GR	22. Approx. Date Work will Start	
23. Proposed Casing and Cementing Program See Operations Plan attached	DRILLING OPERATIONS AUTHORIZED ARE SUBJECT TO COMPLIANCE WITH ATTACHED "GENERAL REQUIREMENTS"	
24. Authorized by:  Regulatory/Compliance Administrator	8-15-97 Date	

PERMIT NO. _____ APPROVAL DATE OCT 22 1997
APPROVED BY _____ TITLE _____ DATE _____

Archaeological Report to be submitted
Threatened and Endangered Species Report to be submitted
NOTE: APD approved in this 1/4 section 08-08-84, resubmitted for this well in this 1/4 Section 01-23-92

HOLD C-104 FOR NSL
R. 9315 (see 10)

NMOCD

District II
PO Drawer DD, Artesia, NM 88211-0719

OIL CONSERVATION DIVISION
PO Box 2088
Santa Fe, NM, 87504-2088

District III
1000 Rio Brazos Rd., Aztec, NM 87410

District IV
PO Box 2088, Santa Fe, NM 87504-2088

☐ AMENDED REPORT

070 FARMINGTON, NM

WELL LOCATION AND ACREAGE DEDICATION PLAT

*API Number 30-045- 29494	*Pool Code 72319	*Pool Name Blanco Mesaverde
*Property Code 7156	*Property Name JAQUEZ	*Well Number 1A
*OGRID No. 14538	*Operator Name BURLINGTON RESOURCES OIL & GAS COMPANY	*Elevation 6169'

¹⁰ Surface Location

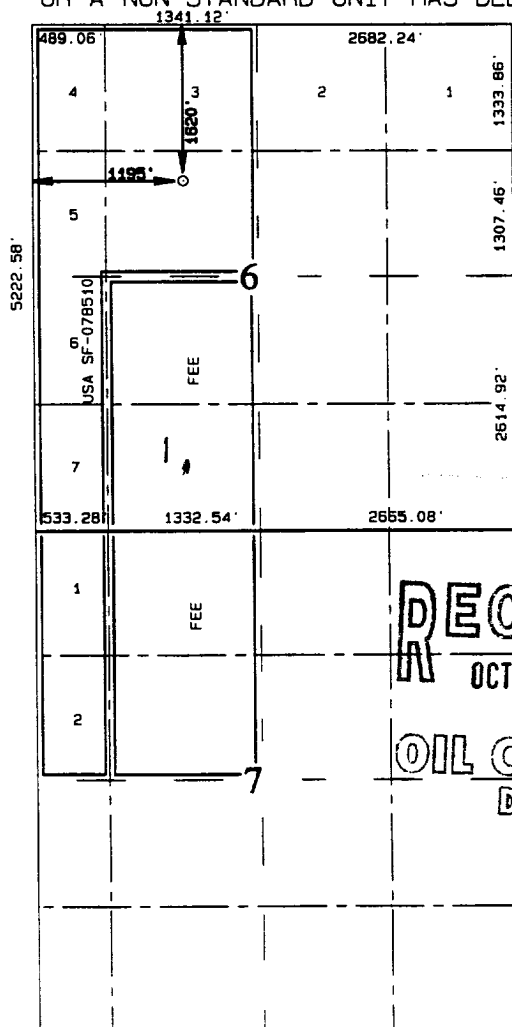
UL or lot no.	Section	Township	Range	Lot Idn	Feet from the	North/South line	Feet from the	East/West line	County
F	6	31N	8W		1620	North	1195	West	SAN JUAN

¹¹Bottom Hole Location If Different From Surface

UL or lot no.	Section	Township	Range	Lot Idn	Feet from the	North/South line	Feet from the	East/West line	County
¹² Dedicated Acres 332.94	¹³ Joint or Infill	¹⁴ Consolidation Code			¹⁵ Order No.				

NO ALLOWABLE WILL BE ASSIGNED TO THIS COMPLETION UNTIL ALL INTERESTS HAVE BEEN CONSOLIDATED
OR A NON-STANDARD UNIT HAS BEEN APPROVED BY THE DIVISION

15



17 OPERATOR CERTIFICATION

I hereby certify that the information contained herein is true and complete to the best of my knowledge and belief

Deey MacNeil
Signature

Peggy Bradfield

Printed Name
Regulatory Administrator

Title *J. 22-97*

Date _____

¹⁸ SURVEYOR CERTIFICATION

I hereby certify that the well location shown on this plat was plotted from field notes of actual surveys made by me or under my supervision, and that the same is true and correct to the best of my belief.

JUNE 23

Date of Survey: 7/1/77

Signature and Seal of Professional Surveyor



Certificate Number

OPERATIONS PLAN

Well Name: Jaquez #1A
Location: 1620' FNL, 1195' FWL Section 6, T-31-N, R-8-W
Rio Arriba County, New Mexico
Latitude 36° 54.9, Longitude 107° 42.2
Formation: Blanco Mesa Verde
Elevation: 6169' GL

<u>Formation Tops:</u>	<u>Top</u>	<u>Bottom</u>	<u>Contents</u>
Surface	San Jose	1766'	aquifer
Ojo Alamo	1766'	2526'	aquifer
Fruitland	2526'	3066'	
Pictured Cliffs	3066'	3196'	gas
Lewis	3196'	3836'	gas
Intermediate TD	3296'		
Mesa Verde	3836'	3706'	gas
Chacra	3706'	5051'	gas
Massive Cliff House	5051'	5091'	gas
Menefee	5091'	5361'	gas
Massive Point Lookout	5361'		gas
Total Depth	5761'		

Logging Program:

Cased hole logging - Gamma Ray Neutron
Coring/DST - none

Mud Program:

<u>Interval</u>	<u>Type</u>	<u>Weight</u>	<u>Vis.</u>	<u>Fluid Loss</u>
0- 200'	Spud	8.4-9.0	40-50	no control
200-3296'	LSND	8.4-9.0	30-60	no control
3296-5761'	Gas/Mist	n/a	n/a	n/a

Pit levels will be visually monitored to detect gain or loss of fluid control.

Casing Program (as listed, the equivalent, or better):

<u>Hole Size</u>	<u>Depth Interval</u>	<u>Csq. Size</u>	<u>Wt.</u>	<u>Grade</u>
12 1/4"	0' - 200'	9 5/8"	32.3#	H-40
8 3/4"	0' - 3296'	7"	20.0#	J-55
6 1/4"	3196' - 5761'	4 1/2"	10.5#	J-55

Tubing Program:

0' - 5761' 2 3/8" 4.7# J-55

BOP Specifications, Wellhead and Tests:

Surface to Intermediate TD -

11" 2000 psi minimum double gate BOP stack (Reference Figure #1).
After nipple-up prior to drilling out surface casing, rams and casing will be tested to 600 psi for 30 minutes.

