

UNITED STATES  
DEPARTMENT OF THE INTERIOR  
BUREAU OF LAND MANAGEMENT

## APPLICATION FOR PERMIT TO DRILL OR DEEPEN

## 1a. TYPE OF WORK

DRILL ☒DEEPEN ☐

## b. TYPE OF WELL

OIL  
WELL ☐GAS  
WELL ☒

OTHER

SINGLE  
ZONE ☒MULTIPLE  
ZONE ☐

## 2. NAME OF OPERATOR

ROBERT L. BAYLESS, PRODUCER LLC

15C182

## 3. ADDRESS AND TELEPHONE NO.

PO BOX 168 FARMINGTON, NM 87499 (505) 326-2659

## 4. LOCATION OF WELL (Report location clearly and in accordance with any State requirements.)\*

At surface

865 FSL &amp; 1065 FEL

At proposed prod. zone

## 14. DISTANCE IN MILES AND DIRECTION FROM NEAREST TOWN OR POST OFFICE\*

15. DISTANCE FROM PROPOSED  
LOCATION TO NEAREST  
PROPERTY OR LEASE LINE, FT.  
(Also to nearest drig. unit line, if any)

## 16. NO. OF ACRES IN LEASE

17. NO. OF ACRES ASSIGNED  
TO THIS WELL18. DISTANCE FROM PROPOSED LOCATION\*  
TO NEAREST WELL, DRILLING COMPLETED,  
OR APPLIED FOR, ON THIS LEASE, FT.

## 19. PROPOSED DEPTH

## 20. ROTARY OR CABLE TOOLS

## 21. ELEVATIONS (Show whether DF, RT, GR, etc.)

## 22. APPROX. DATE WORK WILL START\*

5921 KB  
This section is subject to technical and  
procedural review pursuant to 43 CFR 3165.3  
and appeal pursuant to 43 CFR 3165.4.

PROPOSED CASING AND CEMENTING PROGRAM  
SUBJECT TO COMPLIANCE WITH ATTACHED  
"GENERAL REQUIREMENTS"

SIZE OF HOLE	GRADE, SIZE OF CASING	WEIGHT PER FOOT	SETTING DEPTH	QUANTITY OF CEMENT
8 3/4	7" J-55	23.0 #/ft	120	30 sx (37.8 ft <sup>3</sup> )
6 1/4	4 1/2" J-55	10.5 #/ft	2235	225 sx (262.0 ft <sup>3</sup> )

Will drill 8 3/4" hole to 120 ft and set 120 ft 7" 23.0#/ft new J-55 casing, cemented with 30 sx Class B cement, circulated to surface. Will drill 6 1/4" hole to 2235 ft using clear water, natural mud, and water loss control additives. Induction and density logs will be run. Will set 2235 ft 4 1/2" 10.5#/ft new J-55 casing, cemented with 225 sx cement, circulated to surface. No abnormal temperature or pressure is anticipated. Estimated mud weight is 8.6#/gal. Pipeline will be included in this APD as per attached plat.

## ESTIMATED TOPS:

Ojo Alamo	surface	
Fruitland	1700 ft	300 psi
Pictured Cliffs	2092 ft	350 psi

RECEIVED  
DEC 15 1997

OIL CON. DIV.

IN ABOVE SPACE DESCRIBE PROPOSED PROGRAM: If proposal is to deepen, give data on present production and proposed new productive zone. If proposal is to drill or deepen directionally, give pertinent data on subsurface locations and measured and true vertical depths. Give blowout prevention program, if any.

24.

SIGNED

TITLE

Engineer

DATE

11-5-82

(This space for Federal or State office use)

PERMIT NO.

APPROVAL DATE

Application approval does not warrant or certify that the applicant holds legal or equitable title to those rights in the subject lease which would entitle the applicant to conduct operations thereon.

CONDITIONS OF APPROVAL, IF ANY:

AS/ Duane W. Spencer

APPROVED BY

TITLE

DATE

\*See Instructions On Reverse Side

DEC 12 1997  
AS/ Duane W. Spencer

1947-1950

1951-1952

1953-1954

1955-1956

District I  
PO Box 1980, Hobbs, NM 88241-1980  
District II  
PO Drawer DD, Artesia, NM 88211-0719  
District III  
1000 Rio Brazos Rd., Aztec, NM 87410  
District IV  
PO Box 2088, Santa Fe, NM 87504-2088

State of New Mexico  
Energy, Minerals & Natural Resources Department

Form C-102  
Revised February 21, 1994  
Instructions on back  
Submit to Appropriate District Office  
State Lease - 4 Copies  
Fee Lease - 3 Copies  
☐ AMENDED REPORT

OIL CONSERVATION DIVISION  
PO Box 2088  
Santa Fe, NM 87504-2088

97 NOV - 6 PM 3: 25

WELL LOCATION AND ACREAGE DEDICATION PLAT

1 API Number <u>30-045-29505</u>		2 Pool Code <u>77200</u>		3 Pool Name <u>FULCHER KUTZ PC EXT</u>		
4 Property Code <u>22186</u>		5 Property Name <u>FLOYD</u>			6 Well Number <u>2</u>	
7 OGRID No. <u>150182</u>		8 Operator Name <u>ROBERT L. BAYLESS, PRODUCER LLC</u>			9 Elevation <u>5916</u>	

10 Surface Location

UL or lot no.	Section	Township	Range	Lot Idn	Feet from the	North/South line	Feet from the	East/West line	County
<u>20</u>	<u>7</u>	<u>30 N</u>	<u>12 W</u>		<u>865</u>	<u>South</u>	<u>1065</u>	<u>East</u>	<u>San Juan</u>

11 Bottom Hole Location If Different From Surface

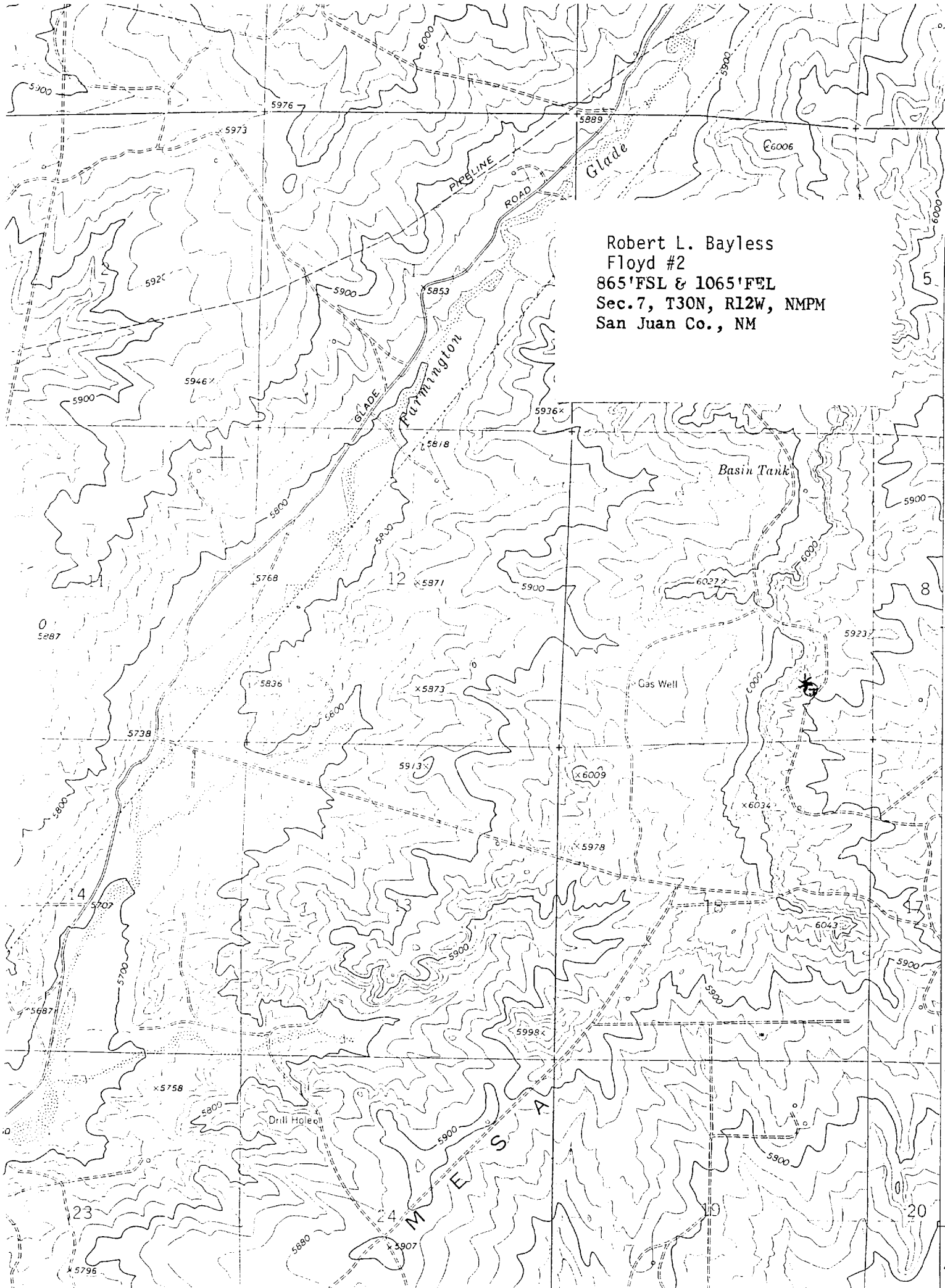
UL or lot no.	Section	Township	Range	Lot Idn	Feet from the	North/South line	Feet from the	East/West line	County
<u>158.34</u>									

12 Dedicated Acres <u>158.34</u>	13 Joint or Infill	14 Consolidation Code	15 Order No.
-------------------------------------	--------------------	-----------------------	--------------

NO ALLOWABLE WILL BE ASSIGNED TO THIS COMPLETION UNTIL ALL INTERESTS HAVE BEEN CONSOLIDATED  
OR A NON-STANDARD UNIT HAS BEEN APPROVED BY THE DIVISION

16				17 OPERATOR CERTIFICATION I hereby certify that the information contained herein is true and complete to the best of my knowledge and belief <u>PRICE M. BAYLESS</u> Signature <u>ENGINEER</u> Printed Name Title Date			
<p>RECEIVED DEC 15 1997 OIL CON. DIV. DIST. 3</p>							
18 SURVEYOR CERTIFICATION I hereby certify that the well location shown on this plat was plotted from field notes of actual surveys made by me or under my supervision, and that the same is true and correct to the best of my belief. Date of Survey Signature and Seal of Professional Surveyor William E. Hinkle II Certificate Number 8466							

RECEIVED  
JAN 11 1964  
U.S. AIR FORCE  
WASHINGTON, D.C.



Robert L. Bayless  
Floyd #2  
865'FSL & 1065'FEL  
Sec.7, T30N, R12W, NMPM  
San Juan Co., NM