

District I  
PO Box 1980, Hobbs, NM 88241-1980  
District II  
PO Drawer DD, Artesia, NM 88211-0719  
District III  
1000 Rio Brazos Rd., Aztec, NM 87410  
District IV  
PO Box 2088, Santa Fe, NM 87504-2088

State of New Mexico  
Energy, Minerals & Natural Resources Department

OIL CONSERVATION DIVISION  
PO Box 2088  
Santa Fe, NM 87504-2088

Form C-101  
Revised February 10, 1994  
Instructions on back  
Submit to Appropriate District Office  
State Lease - 6 Copies  
Fee Lease - 5 Copies

RECEIVED

AMENDED REPORT

APPLICATION FOR PERMIT TO DRILL, RE-ENTER, DEEPEN, PLUG BACK, OR ADD A ZONE

|   |                                    |                             |
|---|------------------------------------|-----------------------------|
| Operator Name and Address<br>Thompson Engineering and Production Corp<br>7415 E. main<br>Farmington, NM 87402 |                                    | OGRID Number<br>037581      |
| OIL CON. DIV.<br>DIST. 3  |                                    | API Number<br>30-0 45-29632 |
| Property Code<br>23476  | Property Name<br>Capt. H.W. Sawyer | Well No.<br>1               |

Surface Location

| UL or lot no. | Section | Township | Range | Lot Ida | Feet from the | North/South line | Feet from the | East/West line | County   |
|---------------|---------|----------|-------|---------|---------------|------------------|---------------|----------------|----------|
| B             | 13      | 30N      | 12W   |         | 1255          | North            | 1715          | East           | San Juan |

Proposed Bottom Hole Location If Different From Surface

| UL or lot no.        | Section | Township | Range | Lot Ida | Feet from the   | North/South line | Feet from the | East/West line | County |
|----------------------|---------|----------|-------|---------|-----------------|------------------|---------------|----------------|--------|
| Basin Fruitland Coal |         |          |       |         | Proposed Pool 2 |                  |               |                |        |

|                     |                     |                              |                               |                                |
|---------------------|---------------------|------------------------------|-------------------------------|--------------------------------|
| Work Type Code<br>N | Well Type Code<br>G | Cable/Rotary<br>R            | Lease Type Code               | Ground Level Elevation<br>5580 |
| Multiple<br>N       | Proposed Depth      | Formation<br>Pictured Cliffs | Contractor<br>L&B Speed Drill | Spud Date<br>July 15, 1998     |

Proposed Casing and Cement Program

| Hole Size | Casing Size | Casing weight/foot | Setting Depth | Sacks of Cement   | Estimated TOC |
|-----------|-------------|--------------------|---------------|-------------------|---------------|
| 8 3/4     | 7           | 20#                | 120'          |                   |               |
| 6 1/4     | 4 1/2       | 10.5 #             | 2000'         | 50 sx 59cu ft.    | surface       |
|           |             |                    |               | 156 sx 321 cu ft. | surface       |
|           |             |                    |               |                   |               |
|           |             |                    |               |                   |               |
|           |             |                    |               |                   |               |

Describe the proposed program. If this application is to DEEPEN or PLUG BACK give the data on the present productive zone and proposed new productive zone. Describe the blowout prevention program, if any. Use additional sheets if necessary.

Thompson Engineering proposes to drill a vertical well add complete the Basin Fruitland Coal Formation.

RECEIVED  
JUL 1 1998

OIL CON. DIV.  
DIST. 3

|   |  |  |  |
|---|--|--|--|
| I hereby certify that the information given above is true and complete to the best of my knowledge and belief.<br>Signature: Paul C. Thompson |  | OIL CONSERVATION DIVISION                                    |  |
| Printed name: Paul C. Thompson  |  | Approved by: [Signature] 7-1-98                              |  |
| Title: President  |  | Title: DEPUTY OIL & GAS INSPECTOR, DIST. #3                  |  |
| Date: 6-25-98   |  | Approval Date: JUL 1 1998                                    |  |
| Phone: 505 327-4892   |  | Expiration Date: JUL 1 1999                                  |  |
|   |  | Conditions of Approval:<br>Attached <input type="checkbox"/> |  |

District I  
PO Box 1980, Hobbs, NM 88241-1980

State of New Mexico  
Energy, Minerals & Natural Resources Depart

Form C-102  
Revised February 21, 1994  
Instructions on back  
Submit to Appropriate District Office  
State Lease - 4 Copies  
Fee Lease - 3 Copies

District II  
PO Drawer DD, Artesia, NM 88211-0719

OIL CONSERVATION DIVISION  
PO Box 2088  
Santa Fe, NM 87504-2088

District III  
1000 Rio Brazos Rd., Aztec, NM 87410

District IV  
PO Box 2088, Santa Fe, NM 87504-2088

☐ AMENDED REPORT

WELL LOCATION AND ACREAGE DEDICATION PLAT

|   |   |  |
|---|---|--|
| <sup>1</sup> API Number<br>30-045-29632 | <sup>2</sup> Pool Code<br>71429   | <sup>3</sup> Pool Name<br>BASIN FRUITLAND COAL |
| <sup>4</sup> Property Code<br>23476     | <sup>5</sup> Property Name<br>CAPT. H.W. SAWYER                               | <sup>6</sup> Well Number<br>1                  |
| <sup>7</sup> GRID No.<br>037581         | <sup>8</sup> Operator Name<br>THOMPSON ENGINEERING AND PRODUCTION CORPORATION | <sup>9</sup> Elevation<br>5580'                |

<sup>10</sup> Surface Location

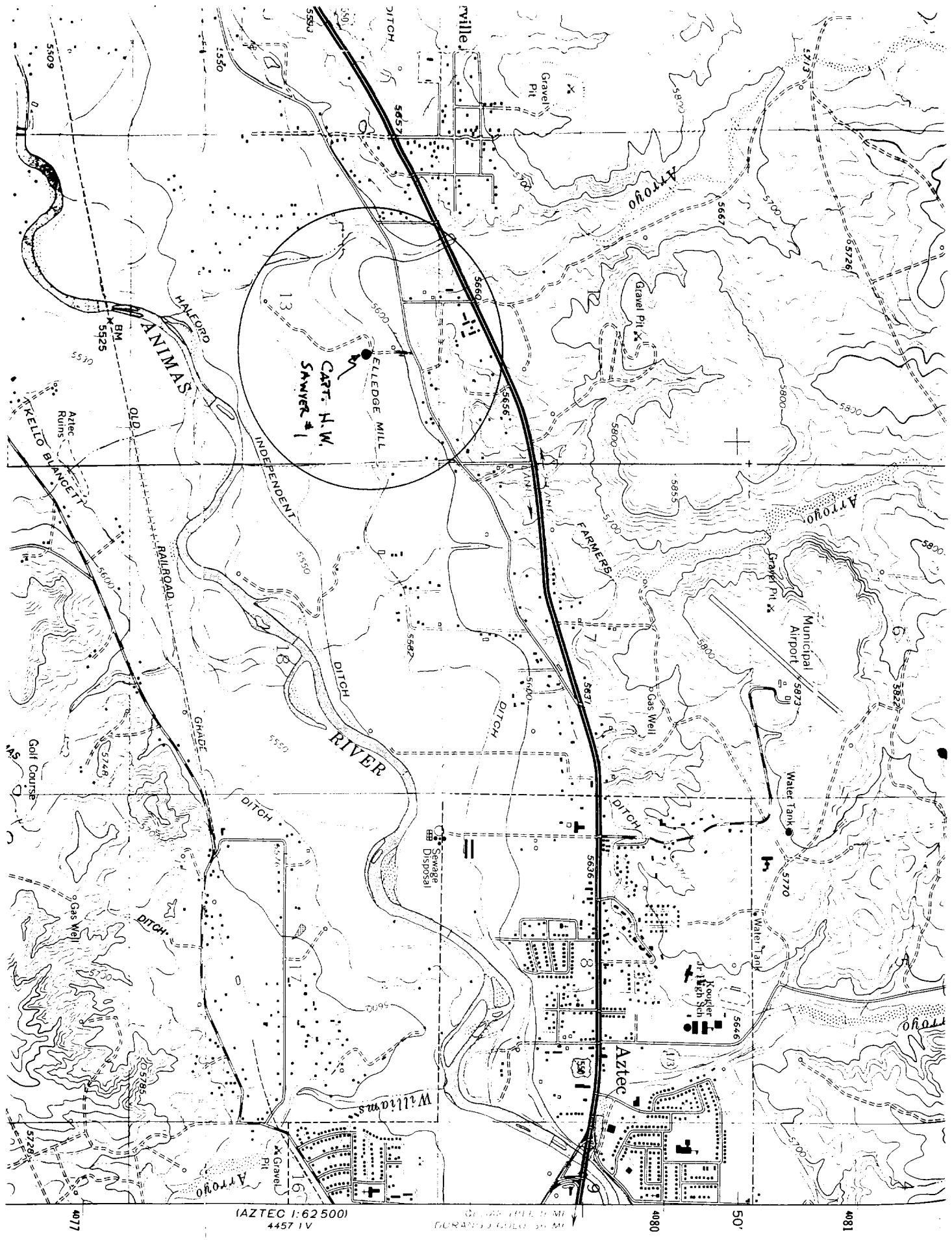
|               |         |          |       |         |               |                  |               |                |          |
|---------------|---------|----------|-------|---------|---------------|------------------|---------------|----------------|----------|
| UL or lot no. | Section | Township | Range | Lot Idn | Feet from the | North/South line | Feet from the | East/West line | County   |
| B             | 13      | 30N      | 12W   |         | 1255          | NORTH            | 1715          | EAST           | SAN JUAN |

<sup>11</sup> Bottom Hole Location If Different From Surface

|                                      |                                    |                                       |                         |         |               |                  |               |                |        |
|--------------------------------------|------------------------------------|---------------------------------------|-------------------------|---------|---------------|------------------|---------------|----------------|--------|
| UL or lot no.                        | Section                            | Township                              | Range                   | Lot Idn | Feet from the | North/South line | Feet from the | East/West line | County |
|                                      |                                    |                                       |                         |         |               |                  |               |                |        |
| <sup>12</sup> Dedicated Acres<br>320 | <sup>13</sup> Joint or Infill<br>Y | <sup>14</sup> Consolidation Code<br>C | <sup>15</sup> Order No. |         |               |                  |               |                |        |

NO ALLOWABLE WILL BE ASSIGNED TO THIS COMPLETION UNTIL ALL INTERESTS HAVE BEEN CONSOLIDATED  
OR A NON-STANDARD UNIT HAS BEEN APPROVED BY THE DIVISION

|               |          |   |
|---------------|----------|---|
| <sup>16</sup> | 5190.24' | <sup>17</sup> OPERATOR CERTIFICATION<br>I hereby certify that the information contained herein is true and complete to the best of my knowledge and belief<br>Signature<br>Paul C. Thompson<br>Printed Name<br>Paul C. Thompson<br>Title<br>President<br>6-25-98<br>Date  |
| 5268.45'      | 1255'    | 1715'   |
| 13            |          |   |
| 5266.80'      |          | <sup>18</sup> SURVEYOR CERTIFICATION<br>I hereby certify that the well location shown on this plat was plotted from field notes of actual surveys made by me or under my supervision, and that the same is true and correct to the best of my belief.<br>JUNE 15, 1998<br>Date of Survey<br>Signature and Seal of Professional Surveyor<br>NEALE C. EDWARDS<br>NEW MEXICO<br>6857<br>Certification Number |
|               | 5243.86' |   |



AZTEC 1:62500  
4457 IV

GEORGE P. H. M.  
DORLAND P. H. M.

4080

50

4081

Copyright 1962 by the United States Government  
All rights reserved. No part of this publication may be reproduced without permission in writing from the United States Government.