

DISTRICT I
PO Box 1980, Hobbs, NM 88240

DISTRICT II
PO Box DD, Artesia, NM 88210

DISTRICT III
1000 Rio Brazos Rd., Aztec, NM 87410

DISTRICT IV
2040 South Pacheco, Santa Fe, NM 87505

State of New Mexico
Energy, Minerals and Natural Resources Department

ORIGINAL

Form C-101
Revised February 21, 1994

Instructions on back
Submit to Appropriate District Office
State Lease - 6 Copies
Fee Lease - 5 Copies

OIL CONSERVATION DIVISION

p.o. Box 2088

Santa Fe, NM 87504-2088

RECEIVED
SEP 10 1998

☐ AMENDED REPORT

APPLICATION FOR PERMIT TO DRILL, RE-ENTER, DEPEN, PLUGBACK, OR ADD A ZONE

1. OPERATOR NAME AND ADDRESS Cross Timbers Operating Company 3000 North Garfield, Suite 175 Midland, Texas 79705		2. OGRID NUMBER 167067	
3. API NUMBER 30-045-39665		4. PROPERTY CODE 022394 22781	
5. PROPERTY NAME MC COY GAS COM D		6. WELL NUMBER 2	

7. SURFACE LOCATION

U/I or lot no.	Section	Township	Range	Lot Idn	Feet from the	North/South line	Feet from the	East/West line	County
A	28	30N	12W		965	NORTH	285	EAST	SAN JUAN

8. PROPOSED BOTTOM HOLE LOCATION IF DIFFERENT FROM SURFACE

U/I or lot no.	Section	Township	Range	Lot Idn	Feet from the	North/South line	Feet from the	East/West line	County
9. Proposed Pool 1 Basin Fruitland Coal 71629					10. Proposed Pool 2				

11. Work Type Code N	12/ Well Type Code G	13. Cable/Rotary ROTARY	14. Lease Type Code FEE	15. Ground Level Elevation 5456'
16. Multiple NO	17. Proposed Depth 1800'	18. Formation BASIN FRUITLAND COAL	19. Contractor	20. Spud Date ASAP

21. Proposed Casing and Cement Program

Hole Size	Casing Size	Casing weight/foot	Setting Depth	Sacks of Cement	Estimated TOC
8 3/4"	7"	23#, J-55, STC	125'	100	SURFACE
6 1/4"	4 1/2"	10.5#, J-55, STC	1800'	200	SURFACE

22. Describe the proposed program. If this application is to DEEPEN or PLUG BACK give the data on the present productive zone and proposed new productive zone. Describe the blowout prevention program, if any. Use additional sheets if necessary.

Casing/Cement Program to 200': 100 sacks Class B cement containing 2% CACI2, 1/4 PPS celloflake. Circulate to surface.

Casing/Cement Program to 1800': 100 sacks of 35/65/6 Poz cement containing 6% gel, 5 PPS Gilsonite, 1/4 PPS celloflake, followed by 100 sacks of Class G cement containing 5 PPS gilsonite, 1/4 PPS celloflake. Use 25% excess over volume calculated from open hole logs to bring TOC up to surface.

A rig equipped with a double BOP will be used.

23. I hereby certify that the information given above is true and complete to the best of my knowledge and belief.

Signature:

Gary Markestad

Printed Name: Gary Markestad

Title: Vice President, Production

Date: 9/9/98

Phone: (505) 632-5200

OIL CONSERVATION DIVISION

APPROVED BY:

TITLE: DEPUTY OIL & GAS INSPECTOR, DIST. #3

Approval Date:

SEP 11 1998

Expiration Date:

SEP 11 1999

Conditions of Approval:

Attached:

ORIGINAL

Dorothy,
will need to send
in an amended
report for this well.
It should be in 30N
instead of 32N

Thank (E)

District I
PO Box 1980, Hobbs, NM 88241-1980

State of New Mexico
Energy, Minerals & Natural Resources Department

Form C-102
Revised February 21, 1994
Instructions on back

District II
PO Drawer DD, Artesia, NM 88211-0719

Submit to Appropriate District Office
State Lease - 4 Copies
Fee Lease - 3 Copies

District III
1000 Rio Brazos Rd., Aztec, NM 87410

OIL CONSERVATION DIVISION
PO Box 2088
Santa Fe, NM 87504-2088

District IV
PO Box 2088, Santa Fe, NM 87504-2088

☐ AMENDED REPORT

WELL LOCATION AND ACREAGE DEDICATION PLAT

*API Number 30-045-29665		*Pool Code 71629	*Pool Name Basin Flat Coal
*Property Code 22781	*Property Name MCCOY GAS COM D		*Well Number 2
*GRID No. 167067	*Operator Name CROSS TIMBERS OPERATING COMPANY		*Elevation 5456'

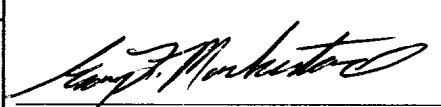
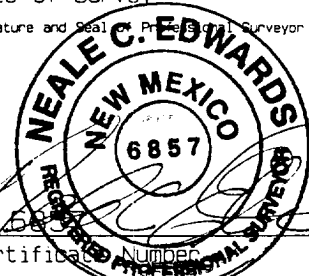
10 Surface Location

UL or lot no. A	Section 28	Township 30N	Range 12W	Lot Idn	Feet from the 920	North/South line NORTH	Feet from the 805	East/West line EAST	County SAN JUAN
--------------------	---------------	-----------------	--------------	---------	----------------------	---------------------------	----------------------	------------------------	--------------------

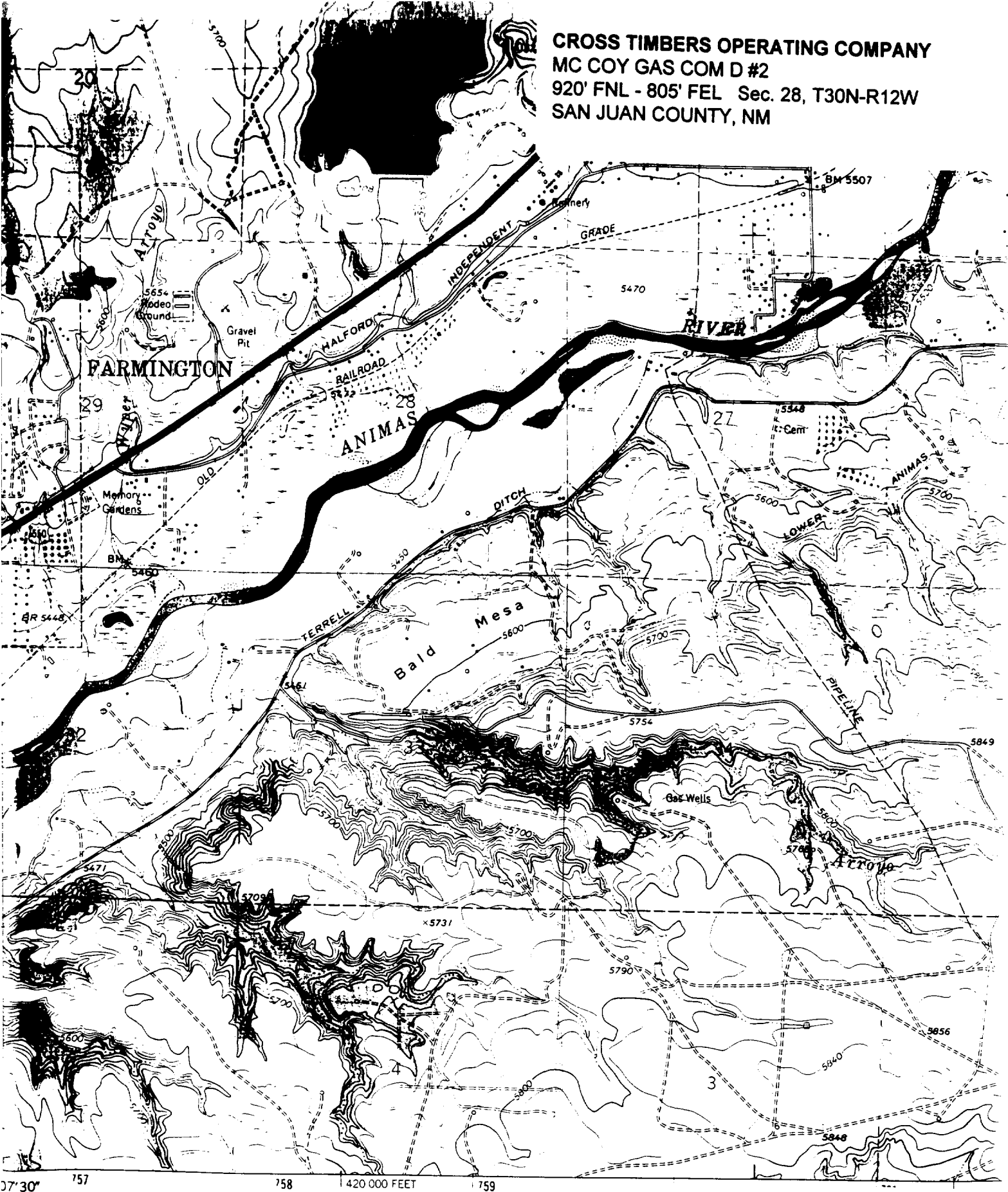
11 Bottom Hole Location If Different From Surface

UL or lot no.	Section	Township	Range	Lot Idn	Feet from the	North/South line	Feet from the	East/West line	County
12 Dedicated Acres 320		13 Joint or Infill		14 Consolidation Code		15 Order No.			

NO ALLOWABLE WILL BE ASSIGNED TO THIS COMPLETION UNTIL ALL INTERESTS HAVE BEEN CONSOLIDATED
OR A NON-STANDARD UNIT HAS BEEN APPROVED BY THE DIVISION

5258.88' (REC)	2627.32' (MEAS)	920'	805'	2584.55' (MEAS)	2631.41' (MEAS)	5270.76' (REC)	17 OPERATOR CERTIFICATION I hereby certify that the information contained herein is true and complete to the best of my knowledge and belief  Signature GARY L. MARKESTAD Printed Name VICE PRESIDENT-PRODUCTION Title 9-9-98 Date
							18 SURVEYOR CERTIFICATION I hereby certify that the well location shown on this plat was plotted from field notes of actual surveys made by me or under my supervision, and that the same is true and correct to the best of my belief. AUGUST 28, 1998 Date of Survey Signature and Seal of Professional Surveyor  Certification Number

CROSS TIMBERS OPERATING COMPANY
MC COY GAS COM D #2
 920' FNL - 805' FEL Sec. 28, T30N-R12W
 SAN JUAN COUNTY, NM



Mapped, edited, and published by the Geological Survey
 Control by USGS and NOS/NOAA
 Topography by photogrammetric methods from aerial photographs
 taken 1958 and 1962. Field checked 1963.
 Polyconic projection. 1927 North American datum
 10,000-foot grid based on New Mexico coordinate system, west zone
 1000-meter Universal Transverse Mercator grid ticks

Flora Vista, NM USGS 7.5' Series
1:2400 Scale