

# ORIGINAL

Revised February 21, 1994

DISTRICT II  
PO Box DD, Artesia, NM 88210

**OIL CONSERVATION DIVISION**

Instructions on back  
Submit to Appropriate District Office

DISTRICT III  
1000 Rio Brazos Rd., Aztec, NM 87410

p.o. Box 2088  
Santa Fe, NM 87504-2088

State Lease - 6 Copies  
Fee Lease - 5 Copies

DISTRICT IV  
2040 South Pacheco, Santa Fe, NM 87505

☐ AMENDED REPORT

## APPLICATION FOR PERMIT TO DRILL, RE-ENTER, DEPEND, PLUGBACK, OR ADD A ZONE

1. OPERATOR NAME AND ADDRESS Cross Timbers Operating Company 3000 North Garfield, Suite 175 Midland, Texas 79705		2. OGRID NUMBER 167067
4. PROPERTY CODE 022394		3. API NUMBER 30-045-2974
5. PROPERTY NAME OIL CON. DIV. DIST. 2		6. WELL NUMBER 2

## 7. SURFACE LOCATION

UI/ or lot no.	Section	Township	Range	Lot Idn	Feet from the	North/South line	Feet from the	East/West line	County
K	31	30N	12W		1490	SOUTH	1965	WEST	SAN JUAN

8. PROPOSED BOTTOM HOLE LOCATION IF DIFFERENT FROM SURFACE

U/I or lot no.	Section	Township	Range	Lot Idn	Feet from the	North/South line	Feet from the	East/West line	County
9. Proposed Pool 1 Basin Fruitland Coal 71629					10. Proposed Pool 2				

11. Work Type Code N	12/ Well Type Code G	13. Cable/Rotary ROTARY	14. Lease Type Code FEE	15. Ground Level Elevation 5445'
16. Multiple NO	17. Proposed Depth 1600'	18. Formation BASIN FRUITLAND COAL	19. Contractor	20. Spud Date ASAP

## 21. Proposed Casing and Cement Program

Hole Size	Casing Size	Casing weight/foot	Setting Depth	Sacks of Cement	Estimated TOC
8 ¾"	7"	23#, J-55, STC	200'	100	SURFACE
6 ¼"	4 ½"	10.5#, J-55, STC	1600'	200	SURFACE

22. Describe the proposed program. If this application is to DEEPEN or PLUG BACK give the data on the present productive zone and proposed new productive zone. Describe the blowout prevention program, if any. Use additional sheets if necessary.

**Casing/Cement Program to 200': 100 sacks Class B cement containing 2% CACI<sub>2</sub>, ¼ PPS celloflake. Circulate to surface.**

Casing/Cement Program to 1850': 100 sacks of 35/65/6 Poz cement containing 6% gel, 5 PPS Gilsonite, ¼ PPS celloflake, followed by 100 sacks of Class G cement containing 5 PPS gilsonite, ¼ PPS celloflake. Use 25% excess over volume calculated from open hole logs to bring TOC up to surface.

A rig equipped with a double BOP will be used.

23. I hereby certify that the information given above is true and complete to the best of my knowledge and belief.

Signature: \_\_\_\_\_

Printed Name: Gary Markestad

Title: Vice President, Production

Date: 10/23/98

Phone: (505) 632-5200

OIL CONSERVATION DIVISION

APPROVED BY:

TITLE: DEPUTY OIL & GAS INSPECTOR, DIST. #3

Approval Date: OCT 28 1999	Expiration Date: OCT 28 1999
----------------------------	------------------------------

Conditions of Approval:

Attached:

District I  
PO Box 1980, Hobbs, NM 88241-1980

District II  
PO Drawer DD, Artesia, NM 88211-0719

District III  
1000 Rio Brazos Rd., Aztec, NM 87410

District IV  
PO Box 2088, Santa Fe, NM 87504-2088

State of New Mexico  
Energy, Minerals & Natural Resources Department

OIL CONSERVATION DIVISION  
PO Box 2088  
Santa Fe, NM 87504-2088

Form C-102  
Revised February 21, 1994  
Instructions on back  
Submit to Appropriate District Office  
State Lease - 4 Copies  
Fee Lease - 3 Copies

☐ AMENDED REPORT

WELL LOCATION AND ACREAGE DEDICATION PLAT

*API Number 30-045-29704		*Pool Code 71629	*Pool Name BASIN FRUITLAND COAL
*Property Code 22804	*Property Name QUINE GAS COM		*Well Number 2
*GRID No. 167067	*Operator Name CROSS TIMBERS OPERATING COMPANY		*Elevation 5445'

<sup>10</sup> Surface Location

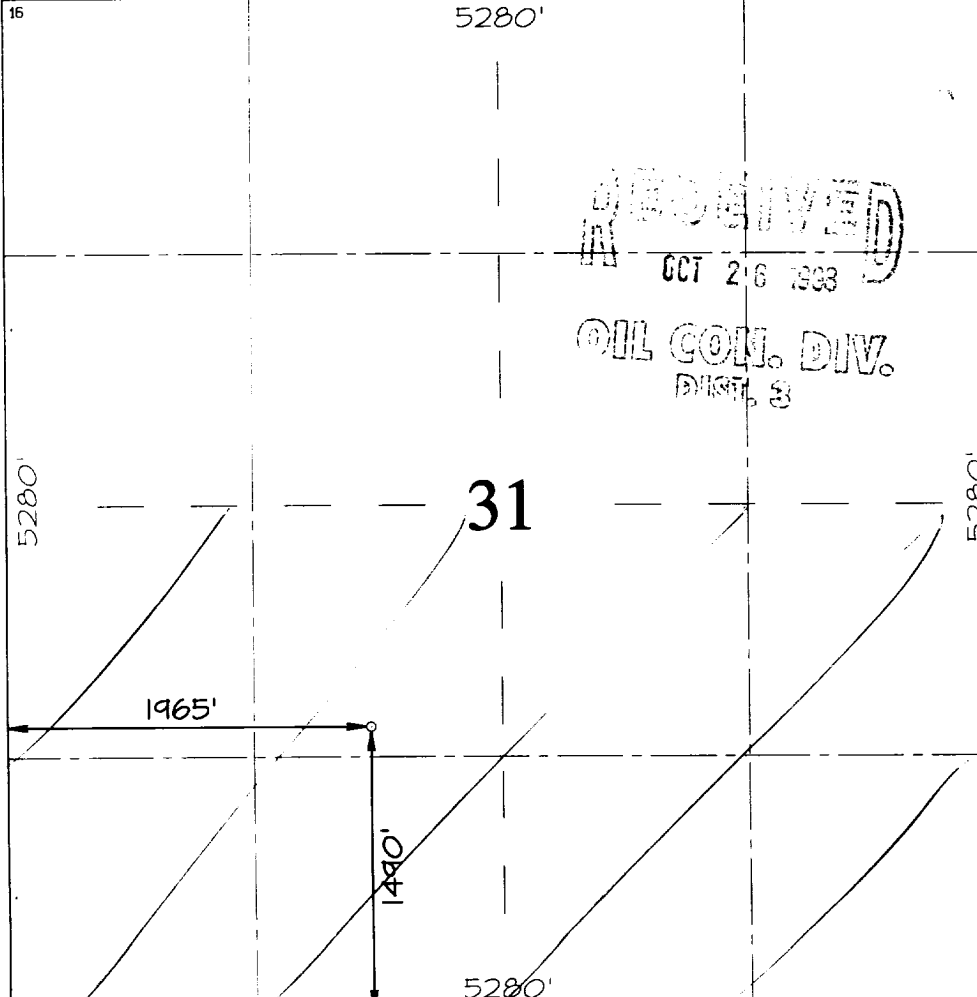
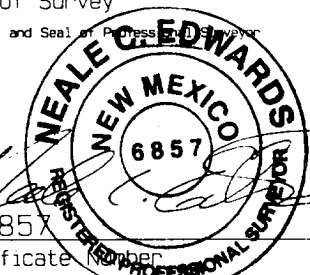
UL or lot no. K	Section 31	Township 30N	Range 12W	Lot Idn	Feet from the 1490	North/South line SOUTH	Feet from the 1965	East/West line WEST	County SAN JUAN
--------------------	---------------	-----------------	--------------	---------	-----------------------	---------------------------	-----------------------	------------------------	--------------------

<sup>11</sup> Bottom Hole Location If Different From Surface

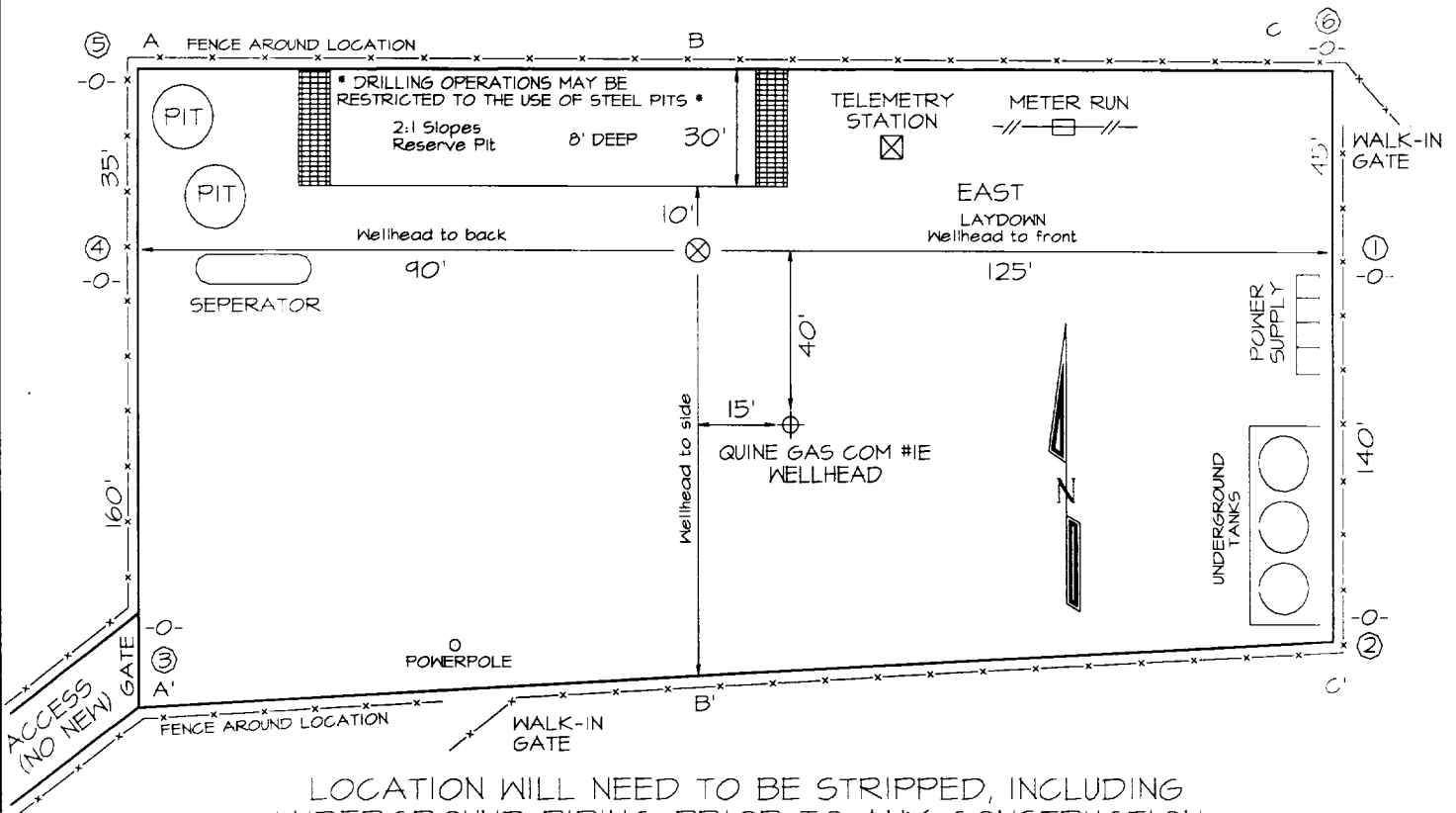
UL or lot no.	Section	Township	Range	Lot Idn	Feet from the	North/South line	Feet from the	East/West line	County
---------------	---------	----------	-------	---------	---------------	------------------	---------------	----------------	--------

<sup>12</sup> Dedicated Acres S 317.38	<sup>13</sup> Joint or Infill	<sup>14</sup> Consolidation Code	<sup>15</sup> Order No.
---	-------------------------------	----------------------------------	-------------------------

NO ALLOWABLE WILL BE ASSIGNED TO THIS COMPLETION UNTIL ALL INTERESTS HAVE BEEN CONSOLIDATED OR A NON-STANDARD UNIT HAS BEEN APPROVED BY THE DIVISION

<sup>16</sup> 	<sup>17</sup> OPERATOR CERTIFICATION I hereby certify that the information contained herein is true and complete to the best of my knowledge and belief.  Signature <u>Gary L. Markestad</u> Printed Name Vice President / Production Title Date <u>10/23/98</u>
	<sup>18</sup> SURVEYOR CERTIFICATION I hereby certify that the well location shown on this plat was plotted from field notes of actual surveys made by me or under my supervision, and that the same is true and correct to the best of my belief.  SEPTEMBER 14, 1998 Date of Survey Signature and Seal of Professional Surveyor  Certificate Number <u>6857</u>

CROSS TIMBERS OPERATING COMPANY  
QUINE GAS COM #2, 1490' FSL & 1965' FWL  
T30N 31, T30N, R12W, NMPM, SAN JUAN COUNTY, NEW MEXICO  
GROUND ELEVATION: 5445' DATE: SEPTEMBER 14, 1998



LOCATION WILL NEED TO BE STRIPPED, INCLUDING UNDERGROUND PIPING, PRIOR TO ANY CONSTRUCTION.

A-A'						
5455'						
5445'						
5435'						

B-B'						
5455'						
5445'						
5435'						

C-C'						
5455'						
5445'						
5435'						

Note: Contractor should call One-Call for location of any marked or unmarked buried pipelines or cables on well pad and/or access road at least two (2) working days prior to construction