

DISTRICT I
PO Box 1980, Hobbs, NM 88240

State of New Mexico
Energy, Minerals and Natural Resources Department

Form C-101
Revised February 21, 1994

DISTRICT II
PO Box DD, Artesia, NM 88210

DISTRICT III
1000 Rio Brazos Rd., Aztec, NM 87410

DISTRICT IV
2040 South Pacheco, Santa Fe, NM 87505

OIL CONSERVATION DIVISION

p.o. Box 2088
Santa Fe, NM 87504-2088

ORIGINAL

Instructions on back
Submit to Appropriate District Office
State Lease - 6 Copies
Fee Lease - 5 Copies

☐ AMENDED REPORT

APPLICATION FOR PERMIT TO DRILL, RE-ENTER, DEPEN, PLUGBACK, OR ADD A ZONE

1. OPERATOR NAME AND ADDRESS Cross Timbers Operating Company 3000 North Garfield, Suite 175 Midland, Texas 79705		2. OGRID NUMBER 167067	
4. PROPERTY CODE 022304 27708		3. API NUMBER 30-045-29705	
5. PROPERTY NAME FEDERAL GAS COM H		6. WELL NUMBER 2	

7. SURFACE LOCATION

U/I or lot no.	Section	Township	Range	Lot Idn	Feet from the	North/South line	Feet from the	East/West line	County
G	31	30N	12W		2045	NORTH	1685	EAST	SAN JUAN

8. PROPOSED BOTTOM HOLE LOCATION IF DIFFERENT FROM SURFACE

U/I or lot no.	Section	Township	Range	Lot Idn	Feet from the	North/South line	Feet from the	East/West line	County
9. Proposed Pool 1 Basin Fruitland Coal 71629					10. Proposed Pool 2				

11. Work Type Code N	12/ Well Type Code G	13. Cable/Rotary ROTARY	14. Lease Type Code FEE	15. Ground Level Elevation 5464'
16. Multiple NO	17. Proposed Depth 1630'	18. Formation BASIN FRUITLAND COAL	19. Contractor	20. Spud Date ASAP

21. Proposed Casing and Cement Program

Hole Size	Casing Size	Casing weight/foot	Setting Depth	Sacks of Cement	Estimated TOC
8 3/4"	7"	23#, J-55, STC	125'	100	SURFACE
6 1/4"	4 1/2"	10.5#, J-55, STC	1630'	200	SURFACE

22. Describe the proposed program. If this application is to DEEPEN or PLUG BACK give the data on the present productive zone and proposed new productive zone. Describe the blowout prevention program, if any. Use additional sheets if necessary.

Casing/Cement Program to 200': 100 sacks Class B cement containing 2% CACI2, 1/4 PPS celloflake. Circulate to surface.

Casing/Cement Program to 1850': 100 sacks of 35/65/6 Poz cement containing 6% gel, 5 PPS Gilsonite, 1/4 PPS celloflake, followed by 100 sacks of Class G cement containing 5 PPS gilsonite, 1/4 PPS celloflake. Use 25% excess over volume calculated from open hole logs to bring TOC up to surface.

A rig equipped with a double BOP will be used.

23. I hereby certify that the information given above is true and complete to the best of my knowledge and belief.

Signature:

Gary T. Markestad

Printed Name: Gary Markestad

Title: Vice President, Production

Date: 10/23/98

Phone: (505) 632-5200

OIL CONSERVATION DIVISION

APPROVED BY:

Ernest Bush
DEPUTY OIL & GAS INSPECTOR, DIST. #3

Approval Date:

OCT 28 1998

Expiration Date:

OCT 28 1999

Conditions of Approval:

Attached:

HMS C-109 FOR NSL

District I
PO Box 1980, Hobbs, NM 88241-1980

District II
PO Drawer 00, Artesia, NM 88211-0719

District III
1000 Rio Brazos Rd., Aztec, NM 87410

District IV
PO Box 2088, Santa Fe, NM 87504-2088

State of New Mexico
Energy, Minerals & Natural Resources Department

OIL CONSERVATION DIVISION
PO Box 2088
Santa Fe, NM 87504-2088

Form C-102
Revised February 21, 1994
Instructions on back
Submit to Appropriate District Office
State Lease - 4 Copies
Fee Lease - 3 Copies

☐ AMENDED REPORT

WELL LOCATION AND ACREAGE DEDICATION PLAT

*API Number 30-045-29705	*Pool Code 71629	*Pool Name BASIN FRUITLAND COAL
*Property Code 22708	*Property Name FEDERAL GAS COM H	*Well Number 2
*CGRID No. 167067	*Operator Name CROSS TIMBERS OPERATING COMPANY	*Elevation 5464'

¹⁰ Surface Location

UL or Lot no.	Section	Township	Range	Lot Idn	Feet from the	North/South line	Feet from the	East/West line	County
G	31	30N	12W		2045	NORTH	1685	EAST	SAN JUAN

¹¹ Bottom Hole Location If Different From Surface

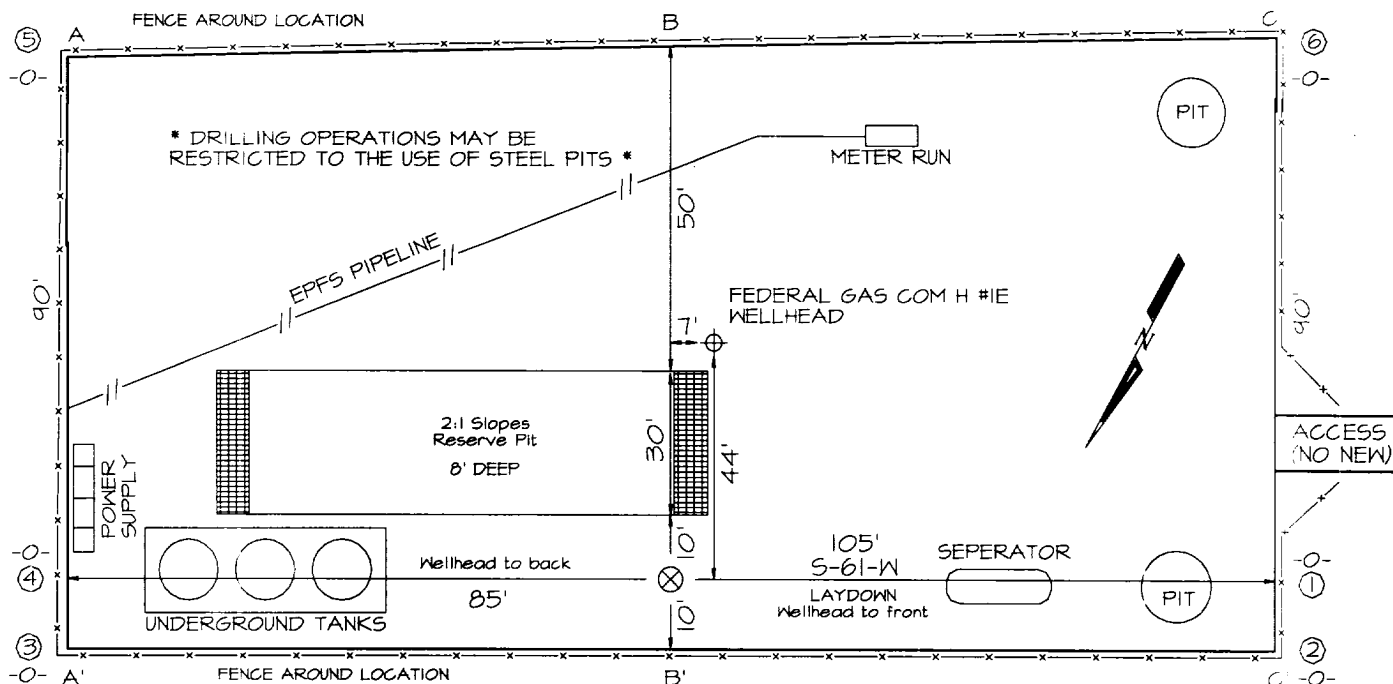
UL or Lot no.	Section	Township	Range	Lot Idn	Feet from the	North/South line	Feet from the	East/West line	County

¹² Dedicated Acres N 318.74	¹³ Joint or Infill	¹⁴ Consolidation Code	¹⁵ Order No.
--	-------------------------------	----------------------------------	-------------------------

NO ALLOWABLE WILL BE ASSIGNED TO THIS COMPLETION UNTIL ALL INTERESTS HAVE BEEN CONSOLIDATED
OR A NON-STANDARD UNIT HAS BEEN APPROVED BY THE DIVISION

<div><p>¹⁶</p><p>31</p></div>	<div><p>¹⁷ OPERATOR CERTIFICATION</p><p>I hereby certify that the information contained herein is true and complete to the best of my knowledge and belief.</p><p><i>Gary L. Markestad</i> Signature Gary L. Markestad Printed Name Vice-President / Production Title 10/23/98 Date</p><p>¹⁸ SURVEYOR CERTIFICATION</p><p>I hereby certify that the well location shown on this plat was plotted from field notes of actual surveys made by me or under my supervision, and that the same is true and correct to the best of my belief.</p><p>SEPTEMBER 14, 1998 Date of Survey <i>Neale C. Edwards</i> Signature and Seal Certificate Number 6857</p></div>
---	--

CROSS TIMBERS OPERATING COMPANY
FEDERAL GAS COM H #2, 2045' FNL & 1685' FEL
SECTION 31, T30N, R12W, NMPM, SAN JUAN COUNTY, NEW MEXICO
GROUND ELEVATION: 5464' DATE: SEPTEMBER 14, 1998



LOCATION WILL NEED TO BE STRIPPED, INCLUDING
 UNDERGROUND PIPING, PRIOR TO ANY CONSTRUCTION.

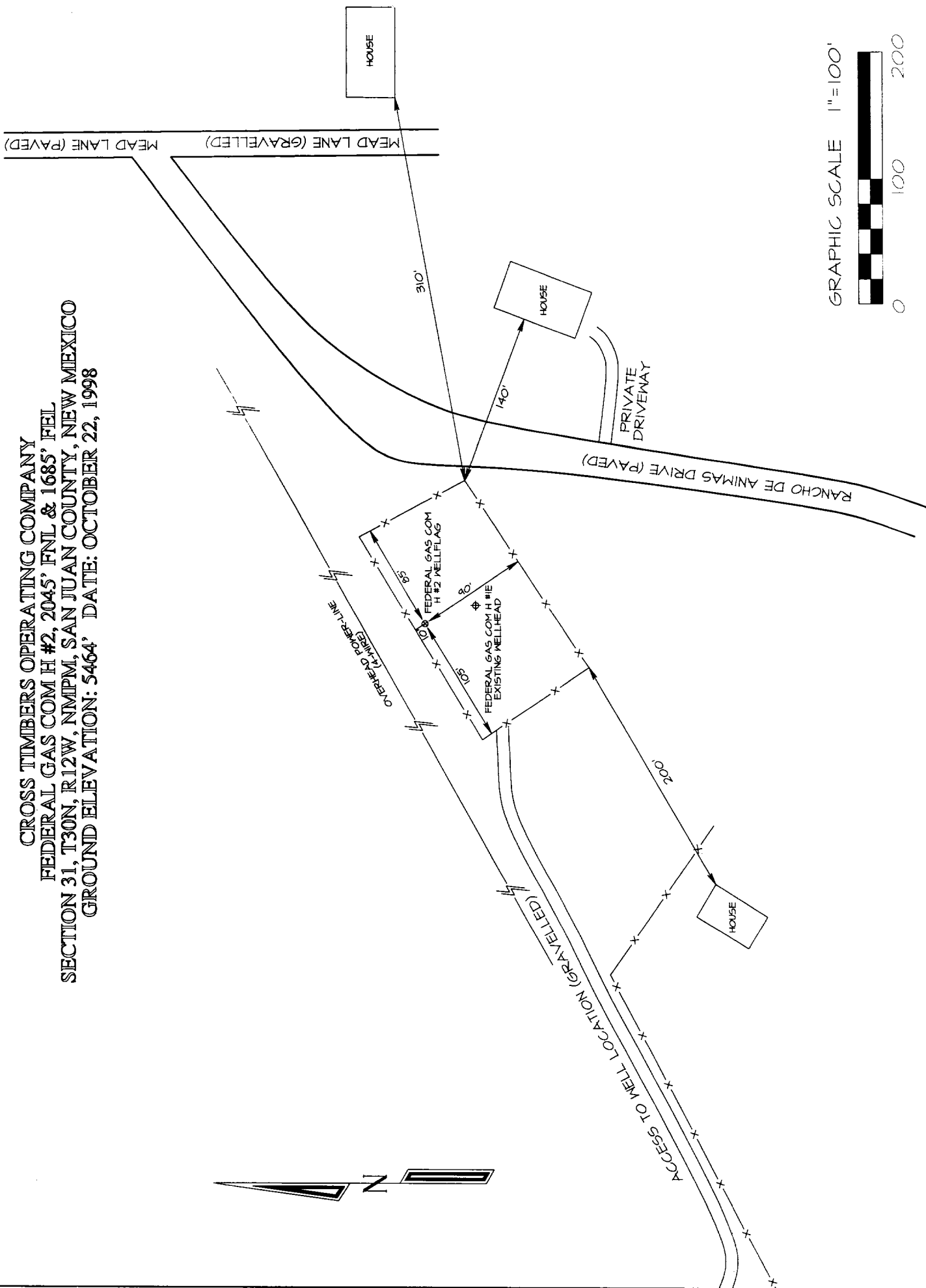
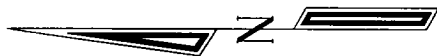
A-A'						
5474'						
5464'						
5454'						

B-B'						
5474'						
5464'						
5454'						

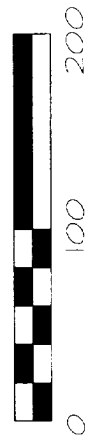
C-C'						
5474'						
5464'						
5454'						

Note: Contractor should call One-Call for location of any marked or unmarked buried pipelines or cables on well pad and/or access road at least two (2) working days prior to construction

CROSS TIMBERS OPERATING COMPANY
 FEDERAL GAS COM H #2, 2045' FNL & 1685' FEL
 SECTION 31, T30N, R12W, NMPM, SAN JUAN COUNTY, NEW MEXICO
 GROUND ELEVATION: 5464' DATE: OCTOBER 22, 1998



GRAPHIC SCALE 1"=100'

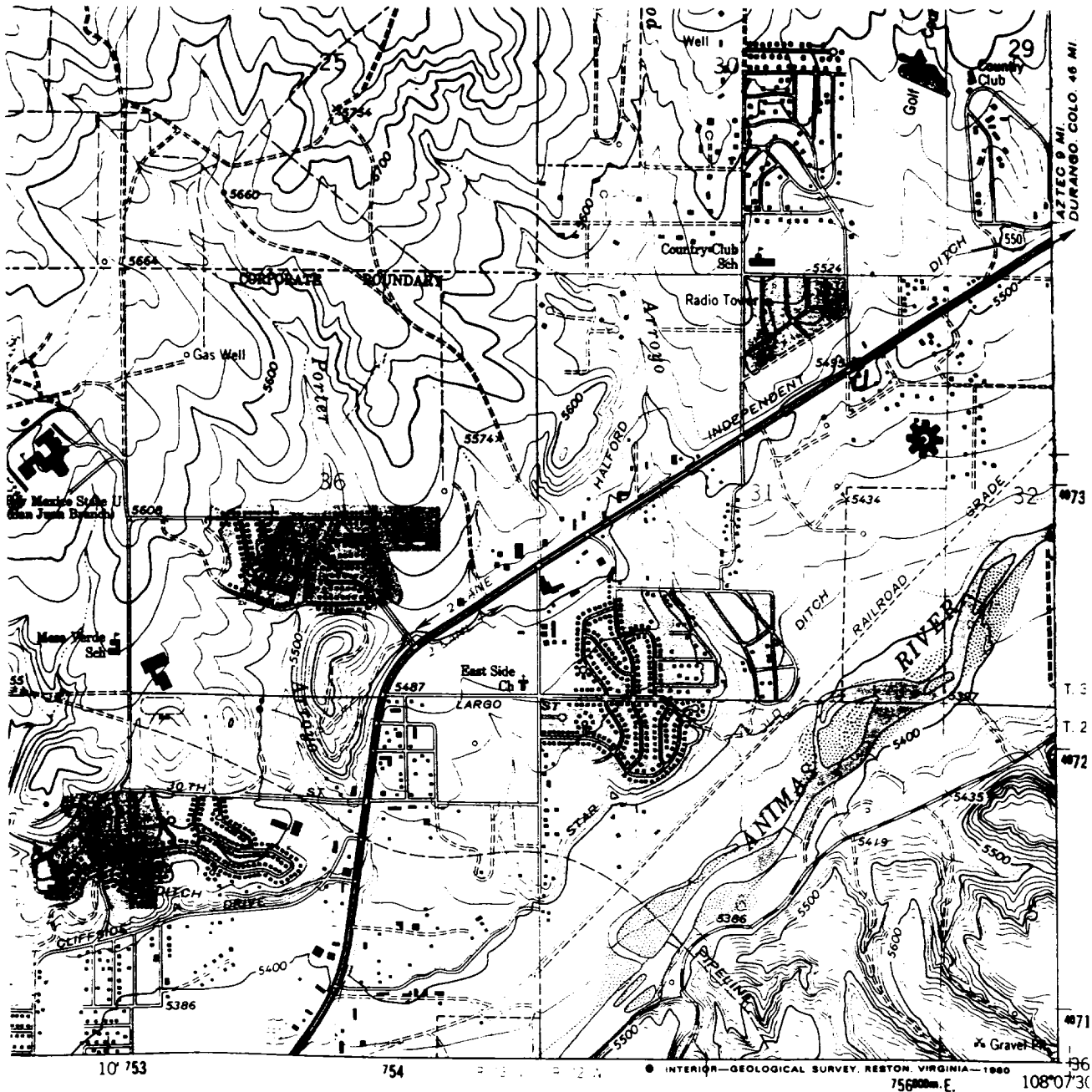


CROSS TIMBERS OPERATING COMPANY

FEDERAL GAS COM H #2

2045' FNL- 1685' FEL, Sec. 31, T30N-R12W

Proposed Basin Fruitland Coal Well



USGS Farmington North, New Mexico 7.5' Series Scale 1:24000