

DISTRICT I  
PO Box 1980, Hobbs, NM 88240

DISTRICT II  
PO Box DD, Artesia, NM 88210

DISTRICT III  
1000 Rio Brazos Rd., Aztec, NM 87410

DISTRICT IV  
2040 South Pacheco, Santa Fe, NM 87505

State of New Mexico  
Energy, Minerals and Natural Resources Department

ORIGINAL

Form C-101  
Revised February 21, 1994

Instructions on back  
Submit to Appropriate District Office  
State Lease - 6 Copies  
Fee Lease - 5 Copies

OIL CONSERVATION DIVISION

P.O. Box 2088  
Santa Fe, NM 87504-2088

RECEIVED  
OCT 26 1998

☐ AMENDED REPORT

APPLICATION FOR PERMIT TO DRILL, RE-ENTER, DEPEN, PLUGBACK, OR ADD A ZONE

1. OPERATOR NAME AND ADDRESS CROSS TIMBERS OPERATING COMPANY 6001 Highway 64, Farmington, NM 87401 505-632-5200 (Gary L. Markestad)		2. OGRID NUMBER 167067
3. API NUMBER 30-0 45-29706		4. PROPERTY CODE 2384
5. PROPERTY NAME ROWLAND GAS COM A		6. WELL NUMBER #1

7. SURFACE LOCATION

U/I or lot no.	Section	Township	Range	Lot Idn	Feet from the	North/South line	Feet from the	East/West line	County
A	25	T30N	R12W		1185'	North	1270'	East	SAN JUAN

8. PROPOSED BOTTOM HOLE LOCATION IF DIFFERENT FROM SURFACE

U/I or lot no.	Section	Township	Range	Lot Idn	Feet from the	North/South line	Feet from the	East/West line	County
9. Proposed Pool 1 BASIN FRUITLAND COAL 71629					10. Proposed Pool 2				

11. Work Type Code N	12/ Well Type Code G	13. Cable/Rotary ROTARY	14. Lease Type Code FEE	15. Ground Level Elevation 5613'
16. Multiple NO	17. Proposed Depth 2100'	18. Formation Basin Fruitland Coal	19. Contractor Not Awarded	20. Spud Date 11/98

21. Proposed Casing and Cement Program

Hole Size	Casing Size	Casing weight/foot	Setting Depth	Sacks of Cement	Estimated TOC
8-3/4"	7"	23#, J-55, ST&C	200'	100	SURFACE
6-1/4"	4-1/2"	10.5#, J-55, ST&C	2100'	200	SURFACE

22. Describe the proposed program. If this application is to DEEPEN or PLUG BACK give the data on the present productive zone and proposed new productive zone. Describe the blowout prevention program, if any. Use additional sheets if necessary.

Casing/Cement Program to 200': 100 sacks Class B cement containing 2% CACI2, 1/4 PPS celloflake. Circulate to surface.

Casing/Cement Program to 2100': 100 sacks of 35/65/6 Poz cement containing 6% gel, 5 PPS Gilsonite, 1/4 PPS celloflake, followed by 100 sacks of Class G cement containing 5 PPS gilsonite, 1/4 PPS celloflake. Use 25% excess over volume calculated from open hole logs to bring TOC up to surface.

A rig equipped with a double BOP will be used.

23. I hereby certify that the information given above is true and complete to the best of my knowledge and belief.

Signature:

Printed Name: GARY L. MARKESTAD

Title: VICE PRESIDENT, PRODUCTION

Date: 10/22/98

Phone: (505) 632-5200

OIL CONSERVATION DIVISION

APPROVED BY:

DEPUTY OIL & GAS INSPECTOR, DIST. #3 10-28-98

TITLE:

Approval Date: OCT 28 1998

Expiration Date: OCT 28 1999

Conditions of Approval:

Attached:

ORIGINAL

100-100000-100000

100-100000-100000

District I  
PO Box 1980, Hobbs, NM 88241-1980

District II  
PO Drawer DD, Artesia, NM 88211-0719

District III  
1000 Rio Brazos Rd., Aztec, NM 87410

District IV  
PO Box 2088, Santa Fe, NM 87504-2088

State of New Mexico  
Energy, Minerals & Natural Resources Department

OIL CONSERVATION DIVISION  
PO Box 2088  
Santa Fe, NM 87504-2088

Form C-102  
Revised February 21, 1994  
Instructions on back  
Submit to Appropriate District Office  
State Lease - 4 Copies  
Fee Lease - 3 Copies

☐ AMENDED REPORT

WELL LOCATION AND ACREAGE DEDICATION PLAT

*API Number <b>30-045-29706</b>		*Pool Code <b>71629</b>	*Pool Name <b>BASIN FRUITLAND COAL</b>
*Property Code <b>23814</b>	*Property Name <b>ROWLAND GAS COM A</b>		*Well Number <b>1</b>
*OGRID No. <b>167067</b>	*Operator Name <b>CROSS TIMBERS OPERATING COMPANY</b>		*Elevation <b>5613'</b>

<sup>10</sup> Surface Location

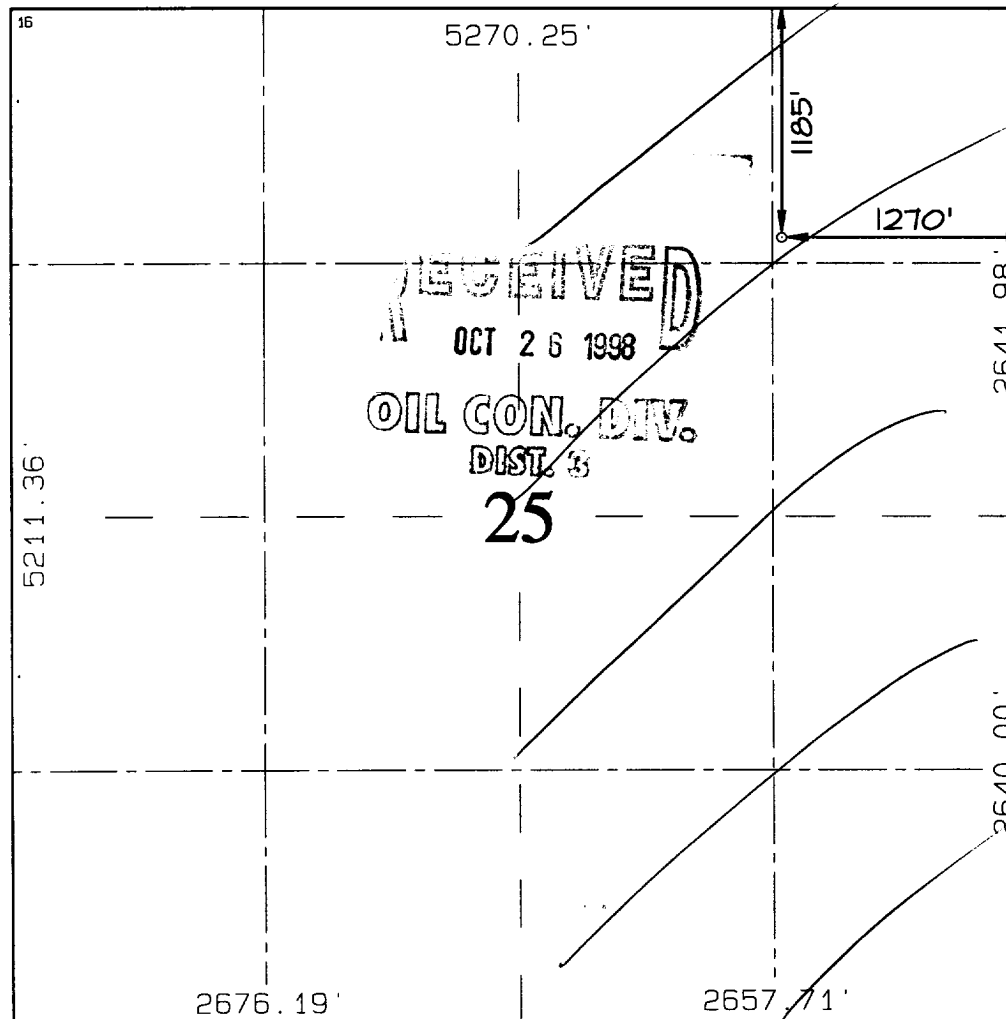
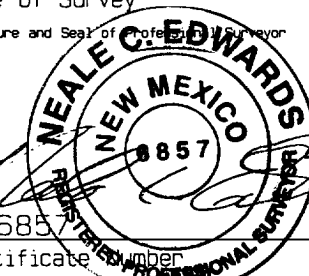
UL or lot no.	Section	Township	Range	Lot Idn	Feet from the	North/South line	Feet from the	East/West line	County
A	25	30N	12W		1185	NORTH	1270	EAST	SAN JUAN

<sup>11</sup> Bottom Hole Location If Different From Surface

UL or lot no.	Section	Township	Range	Lot Idn	Feet from the	North/South line	Feet from the	East/West line	County

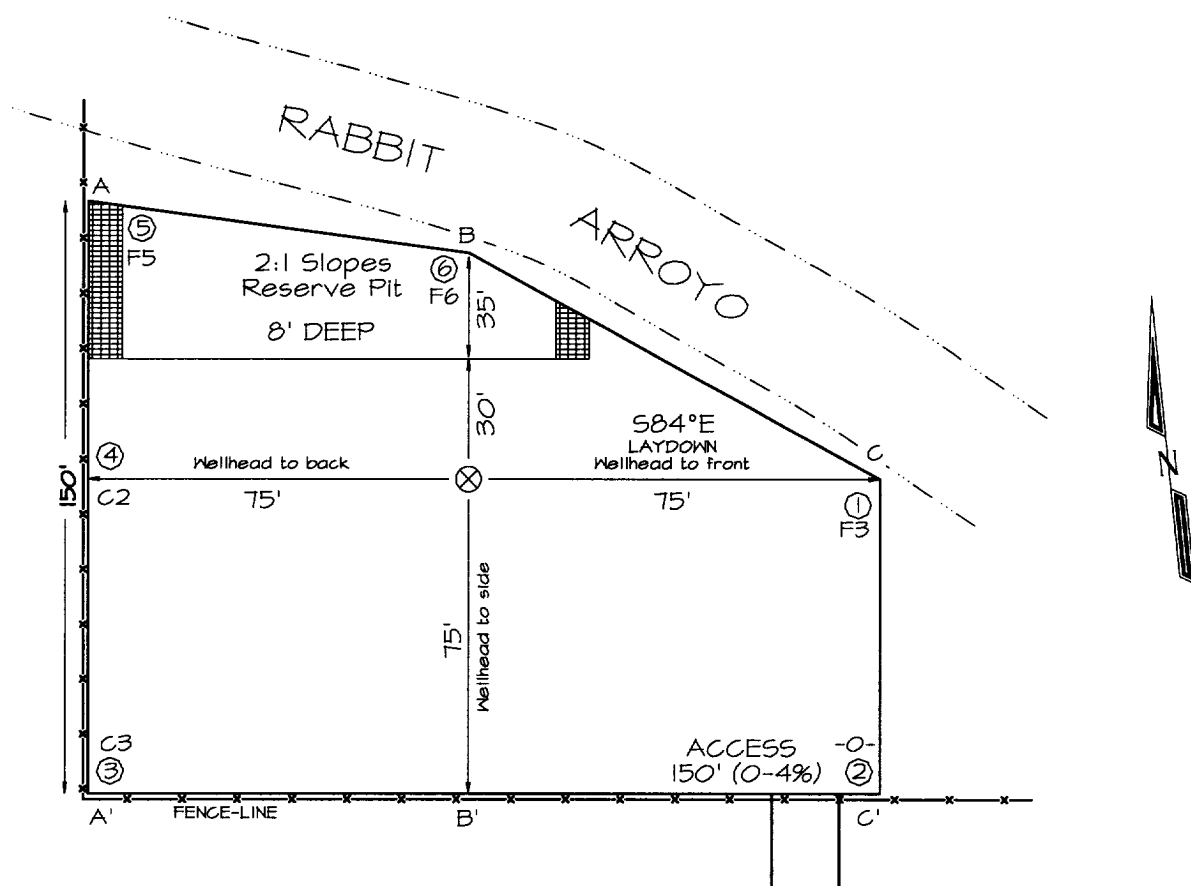
<sup>12</sup> Dedicated Acres <b>E 320</b>	<sup>13</sup> Joint or Infill	<sup>14</sup> Consolidation Code	<sup>15</sup> Order No.
---	-------------------------------	----------------------------------	-------------------------

NO ALLOWABLE WILL BE ASSIGNED TO THIS COMPLETION UNTIL ALL INTERESTS HAVE BEEN CONSOLIDATED  
OR A NON-STANDARD UNIT HAS BEEN APPROVED BY THE DIVISION

<div><p><sup>16</sup></p></div>	<p><sup>17</sup> OPERATOR CERTIFICATION</p> <p>I hereby certify that the information contained herein is true and complete to the best of my knowledge and belief.</p> <p><i>Gary L. Markestad</i> Signature Gary L. Markestad Printed Name Vice-President / Production Title <b>10/22/98</b> Date</p>
	<p><sup>18</sup> SURVEYOR CERTIFICATION</p> <p>I hereby certify that the well location shown on this plat was plotted from field notes of actual surveys made by me or under my supervision, and that the same is true and correct to the best of my belief.</p> <p><b>OCTOBER 16, 1998</b> Date of Survey Signature and Seal of Professional Surveyor  Certificate Number <b>685</b></p>



**CROSS TIMBERS OPERATING COMPANY**  
**ROWLAND GAS COM A #1, 1185' FNL & 1270' FEL**  
**SECTION 25, T30N, R12W, NMPM, SAN JUAN COUNTY, NEW MEXICO**  
**GROUND ELEVATION: 5613' DATE: OCTOBER 16, 1998**



A-A'						
5623'						
5613'						
5603'						

B-B'						
5623'						
5613'						
5603'						

C-C'						
5623'						
5613'						
5603'						

Note: Contractor should call One-Call for location of any marked or unmarked buried pipelines or cables on well pad and/or access road at least two (2) working days prior to construction

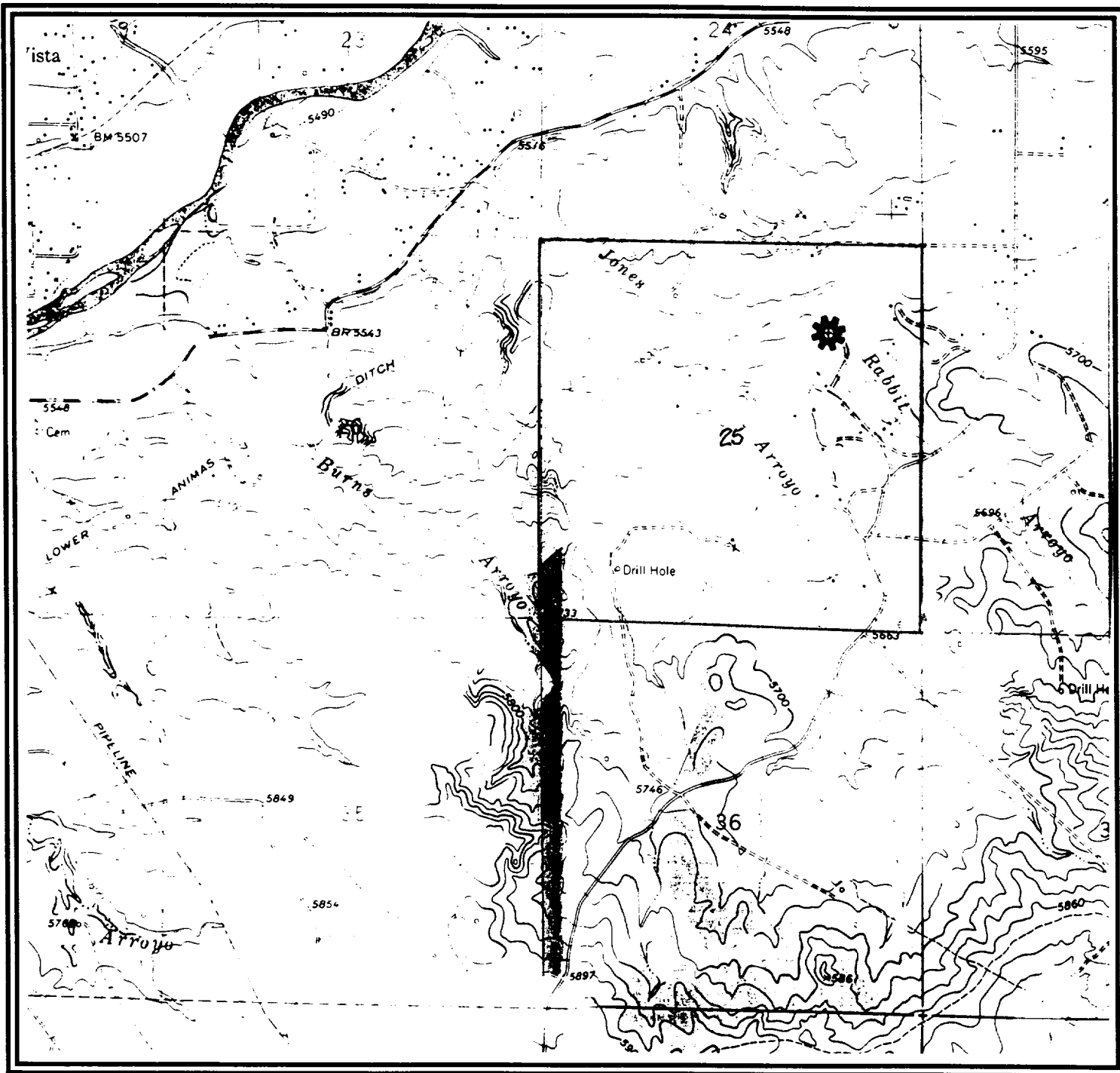


# CROSS TIMBERS OPERATING COMPANY

## ROWLAND GAS COM A #1

1185' FNL- 1270' FEL, Sec. 25, T30N-R12W

Proposed Basin Fruitland Coal Well



USGS Flora Vista, New Mexico 7.5' Series Scale 1:24000

