

DISTRICT I
PO Box 1980, Hobbs, NM 88240

DISTRICT II
PO Box DD, Artesia, NM 88210

DISTRICT III
1000 Rio Brazos Rd., Aztec, NM 87410

DISTRICT IV
2040 South Pacheco, Santa Fe, NM 87505

State of New Mexico
Energy, Minerals and Natural Resources Department

OIL CONSERVATION DIVISION
P.O. Box 2088
Santa Fe, NM 87504-2088

Form C-101
Revised February 21, 1994

Instructions on back
Submit to Appropriate District Office
State Lease - 6 Copies
Fee Lease - 5 Copies

COPY

☐ AMENDED REPORT

APPLICATION FOR PERMIT TO DRILL, RE-ENTER, DEPEN, PLUGBACK, OR ADD A ZONE

1. OPERATOR NAME AND ADDRESS CROSS TIMBERS OPERATING COMPANY 6001 Highway 64, Farmington, NM 87401 505-632-5200 (Gary L. Markestadt)		2. OGRID NUMBER 167067	
4. PROPERTY CODE 22641		5. PROPERTY NAME STEDJE GAS COM	
		3. API NUMBER 45-29738	
		6. WELL NUMBER #2	

7. SURFACE LOCATION									
U/I or lot no. A	Section 27	Township T30N	Range R12W	Lot Idn	Feet from the 1175'	North/South line North	Feet from the 675'	East/West line East	County SAN JUAN

8. PROPOSED BOTTOM HOLE LOCATION IF DIFFERENT FROM SURFACE									
U/I or lot no.	Section	Township	Range	Lot Idn	Feet from the	North/South line	Feet from the	East/West line	County
9. Proposed Pool 1 BASIN FRUITLAND COAL 71629					10. Proposed Pool 2				

11. Work Type Code N	12/ Well Type Code G	13. Cable/Rotary ROTARY	14. Lease Type Code FEE	15. Ground Level Elevation 5474'
16. Multiple NO	17. Proposed Depth 2000'	18. Formation Basin Fruitland Coal	19. Contractor Not Awarded	20. Spud Date 11/98

21. Proposed Casing and Cement Program

Hole Size	Casing Size	Casing weight/foot	Setting Depth	Sacks of Cement	Estimated TOC
8-3/4"	7"	23#, J-55, ST&C	200'	100	SURFACE
6-1/4"	4-1/2"	10.5#, J-55, ST&C	2000'	200	SURFACE

22. Describe the proposed program. If this application is to DEEPEN or PLUG BACK give the data on the present productive zone and proposed new productive zone. Describe the blowout prevention program, if any. Use additional sheets if necessary.

Casing/Cement Program to 200': 100 sacks Class B cement containing 2% CACI2, 1/4 PPS celloflake. Circulate to surface.

Casing/Cement Program to 2000': 100 sacks of 35/65/6 Poz cement containing 6% gel, 5 PPS Gilsonite, 1/4 PPS celloflake, followed by 100 sacks of Class G cement containing 5 PPS gilsonite, 1/4 PPS celloflake. Use 25% excess over volume calculated from open hole logs to bring TOC up to surface.

A rig equipped with a double BOP will be used.

23. I hereby certify that the information given above is true and complete to the best of my knowledge and belief.

Signature:

Printed Name: GARY L. MARKESTAD

Title: VICE PRESIDENT, PRODUCTION

Date: 11/13/98

Phone: (505) 632-5200

OIL CONSERVATION DIVISION

APPROVED BY:

TITLE: DEPUTY OIL & GAS INSPECTOR, DIST. #2

Approval Date: NOV 20 1998 Expiration Date: NOV 20 1999

Conditions of Approval:

Attached:

District I
PO Box 1980, Hobbs, NM 88241-1980

State of New Mexico
Energy, Minerals & Natural Resources Department

Form C-102
Revised February 21, 1994

District II
PO Drawer 00, Artesia, NM 88211-0719

Submit to Appropriate District Office
State Lease - 4 Copies
Fee Lease - 3 Copies

District III
1000 Rio Brazos Rd., Aztec, NM 87410

OIL CONSERVATION DIVISION
PO Box 2088
Santa Fe, NM 87504-2088

District IV
PO Box 2088, Santa Fe, NM 87504-2088

☐ AMENDED REPORT

WELL LOCATION AND ACREAGE DEDICATION PLAT

*API Number 30-045-29738		*Pool Code 71629	*Pool Name BASIN FRUITLAND COAL
*Property Code 22641	*Property Name STEDJE GAS COM		*Well Number 2
*OGRID No. 167067	*Operator Name CROSS TIMBERS OPERATING COMPANY		*Elevation 5474'

¹⁰ Surface Location

UL or lot no.	Section	Township	Range	Lot Idn	Feet from the	North/South line	Feet from the	East/West line	County
A	27	30N	12W		1175	NORTH	675	EAST	SAN JUAN

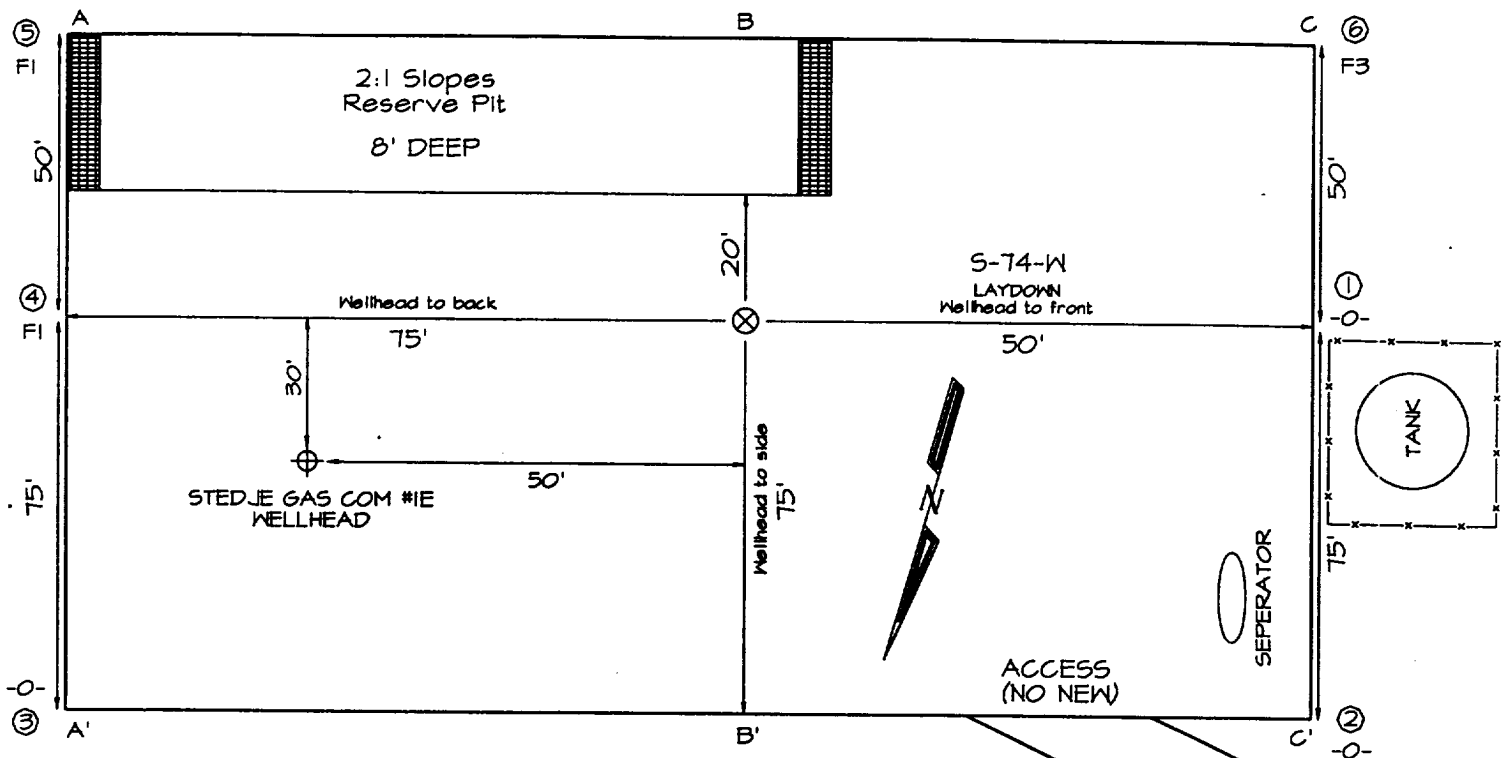
¹¹ Bottom Hole Location If Different From Surface

UL or lot no.	Section	Township	Range	Lot Idn	Feet from the	North/South line	Feet from the	East/West line	County
¹² Dedicated Acres NORTH 142		¹³ Joint or Infill		¹⁴ Consolidation Code		¹⁵ Order No.			

NO ALLOWABLE WILL BE ASSIGNED TO THIS COMPLETION UNTIL ALL INTERESTS HAVE BEEN CONSOLIDATED OR A NON-STANDARD UNIT HAS BEEN APPROVED BY THE DIVISION

<p>27</p> <p>RECEIVED NOV 18 1998 OIL CON. DIV</p>	<p>¹⁷ OPERATOR CERTIFICATION I hereby certify that the information contained herein is true and complete to the best of my knowledge and belief.</p> <p>Signature Gary L. Markestad</p> <p>Printed Name Vice-President / Production</p> <p>Title</p> <p>Date 11/14/98</p>
	<p>¹⁸ SURVEYOR CERTIFICATION I hereby certify that the well location shown on this plat was plotted from field notes of actual surveys made by me or under my supervision, and that the same is true and correct to the best of my belief.</p> <p>OCTOBER 16, 1998 Date of Survey</p> <p>Signature and Seal of Professional Surveyor NEALE C. EDWARDS NEW MEXICO 6857</p> <p>Certificate Number</p>

CROSS TIMBERS OPERATING COMPANY
STEDJE GAS COM #2, 1175' FNL & 675' FEL
SECTION 27, T30N, R12W, NMPM, SAN JUAN COUNTY, NEW MEXICO
GROUND ELEVATION: 5474' DATE: OCTOBER 16, 1998



A-A'						
5484'						
5474'						
5464'						

B-B'						
5484'						
5474'						
5464'						

C-C'						
5484'						
5474'						
5464'						

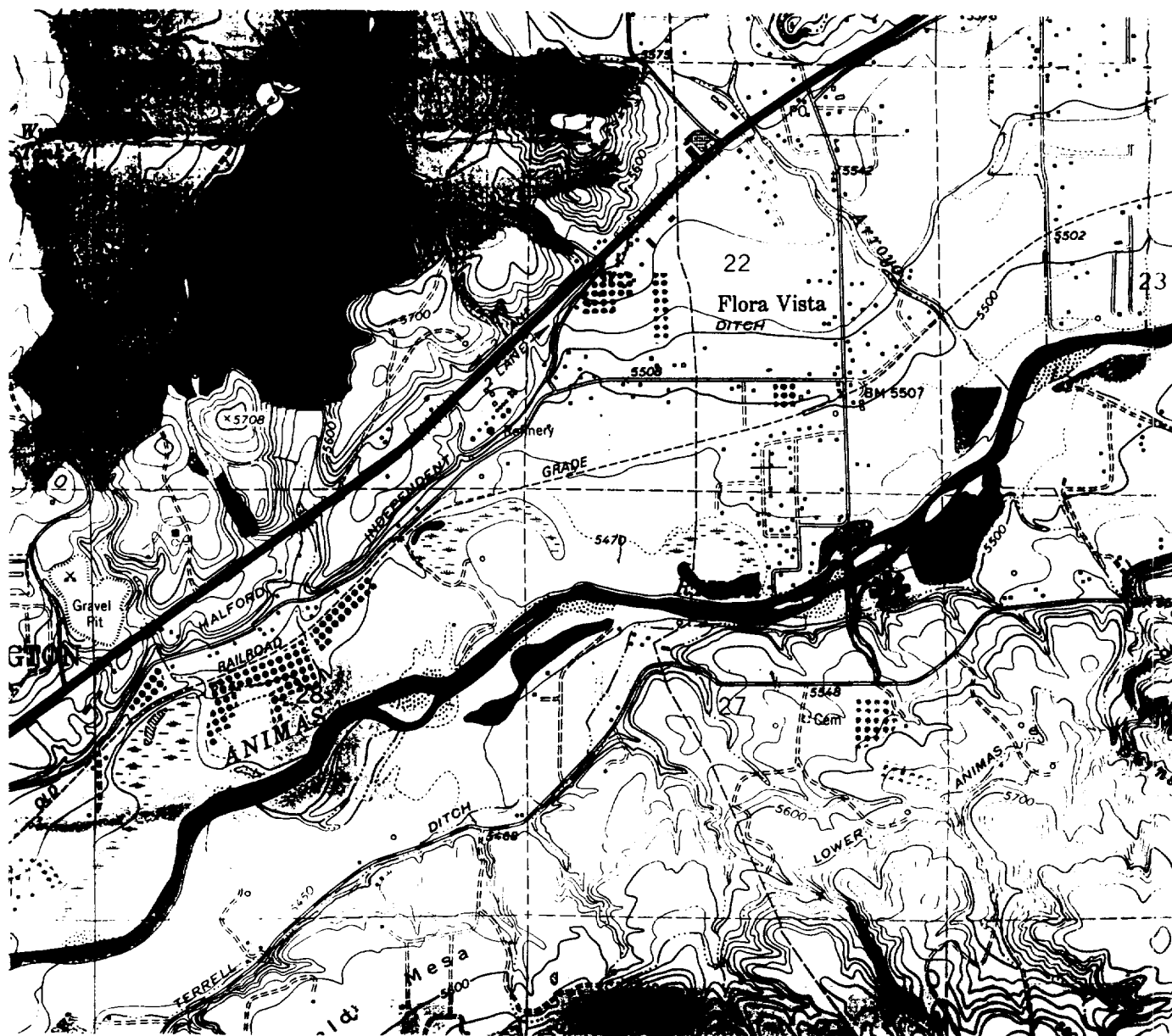
Note: Contractor should call One-Call for location of any marked or unmarked buried pipelines or cables on well pad and/or access road at least two (2) working days prior to construction

CROSS TIMBERS OPERATING COMPANY

STEDJE GAS COM A #1

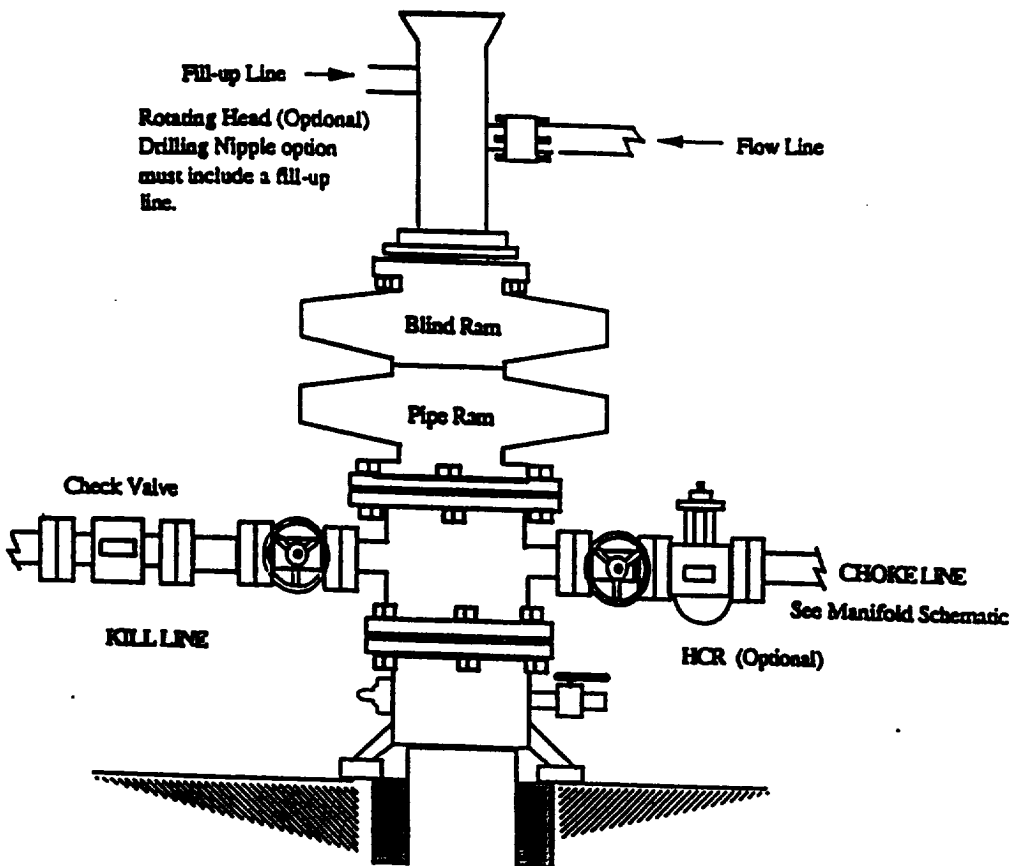
1175' FNL- 675' FEL, Sec. 27, T30N-R12W

Proposed Basin Fruitland Coal Well



USGS Flora Vista, New Mexico 7.5' Series Scale 1:24000

BOPE SCHEMATIC FOR DRILLING OPERATIONS
CLASS I - NORMAL PRESSURE
CROSS TIMBERS OPERATING COMPANY STANDARD



CHOKE MANIFOLD SCHEMATIC FOR DRILLING OPERATIONS
2M & 3M SERVICE
CROSS TIMBERS OPERATING COMPANY STANDARD

