

UNITED STATES
DEPARTMENT OF THE INTERIOR
BUREAU OF LAND MANAGEMENT

RECEIVED
BLM

APPLICATION FOR PERMIT TO DRILL, DEEPEN, OR PLUG BACK

98 DEC -9 PM 1:31

| | | |
|--|--|---|
| 1a. Type of Work DRILL | 5. Lease Number SF-079962 | 070 FARMINGTON, NM Unit Reporting Number |
| 1b. Type of Well GAS | 6. If Indian, All. or Tribe | |
| 2. Operator BURLINGTON RESOURCES Oil & Gas Company | Unit Agreement Name | |
| 3. Address & Phone No. of Operator PO Box 4289, Farmington, NM 87499 (505) 326-9700 | 8. Farm or Lease Name Wood | 9644 |
| | 9. Well Number 2R | |
| 4. Location of Well 1545' FNL, 1705' FEL Latitude 36° 46.3 , Longitude 107° 57.4 | 10. Field, Pool, Wildcat Aztec Pictured Cliffs | |
| | 11. Sec., Twn, Rge, Mer. (NMPM) G Sec. 35, T-30-N, R-11-W API # 30-045- | 29753 |
| 14. Distance in Miles from Nearest Town 3 miles to Aztec | 12. County San Juan | 13. State NM |
| 15. Distance from Proposed Location to Nearest Property or Lease Line 1545' | 17. Acres Assigned to Well 159.75 | |
| 16. Acres in Lease | | |
| 18. Distance from Proposed Location to Nearest Well, Drig, Compl, or Applied for on this Lease 100' | | |
| 19. Proposed Depth 2401' | 20. Rotary or Cable Tools Rotary | |
| | This section is subject to technical and procedural review pursuant to 43 CFR 3165.3 and appeal pursuant to 43 CFR 3165.4. | |
| 21. Elevations (DF, FT, GR, Etc.) 5846' GR | 22. Approx. Date Work will Start | |
| 23. Proposed Casing and Cementing Program See Operations Plan attached | ALL WORKS AUTHORIZED ARE SUBJECT TO COMPLIANCE WITH ATTACHED "GENERAL REQUIREMENTS" | |
| 24. Authorized by: <u><i>[Signature]</i></u> Regulatory/Compliance Administrator | Date <u>12-3-98</u> | |

RECEIVED
IN MAR 15 1999
OIL CON. DIV.
DIST. 3

PERMIT NO. _____ APPROVAL DATE MAR 11 1999
APPROVED BY Chip Hansen TITLE Acting Team Lead DATE 3/11/99

Archaeological Report to be submitted

Threatened and Endangered Species Report to be submitted

NOTE: This format is issued in lieu of U.S. BLM Form 3160-3

Title 18 U.S.C. Section 1001, makes it a crime for any person knowingly and willfully to make to any department or agency of the United States any false, fictitious or fraudulent statements or presentations as to any matter within its jurisdiction.

CL 9

NMOCD

District I
PO Box 1980, Hobbs, NM 88241-1980

State of New Mexico
Energy, Minerals & Natural Resources Department

Form C-102
Revised February 21, 1994

District II
PO Drawer DD, Artesia, NM 88211-0719

OIL CONSERVATION DIVISION
PO Box 2088
Santa Fe, NM 87504-2088

Submit to Appropriate District Office
State Lease - 4 Copies
Fee Lease - 3 Copies

District III
1000 Rio Brazos Rd., Aztec, NM 87410

98 DEC -9 PM 1:31

AMENDED REPORT

District IV
PO Box 2088, Santa Fe, NM 87504-2088

WELL LOCATION AND ACREAGE DEDICATION PLAT

| | | | |
|-------------------------------------|--|---------------------|-------------------------------------|
| *API Number 30-045- 29753 | | *Pool Code 71280 | *Pool Name Aztec Pictured Cliffs |
| *Property Code 7644 | *Property Name WOOD | | *Well Number 2R |
| *GRID No. 14538 | *Operator Name BURLINGTON RESOURCES OIL & GAS COMPANY | | *Elevation 5846' |

¹⁰ Surface Location

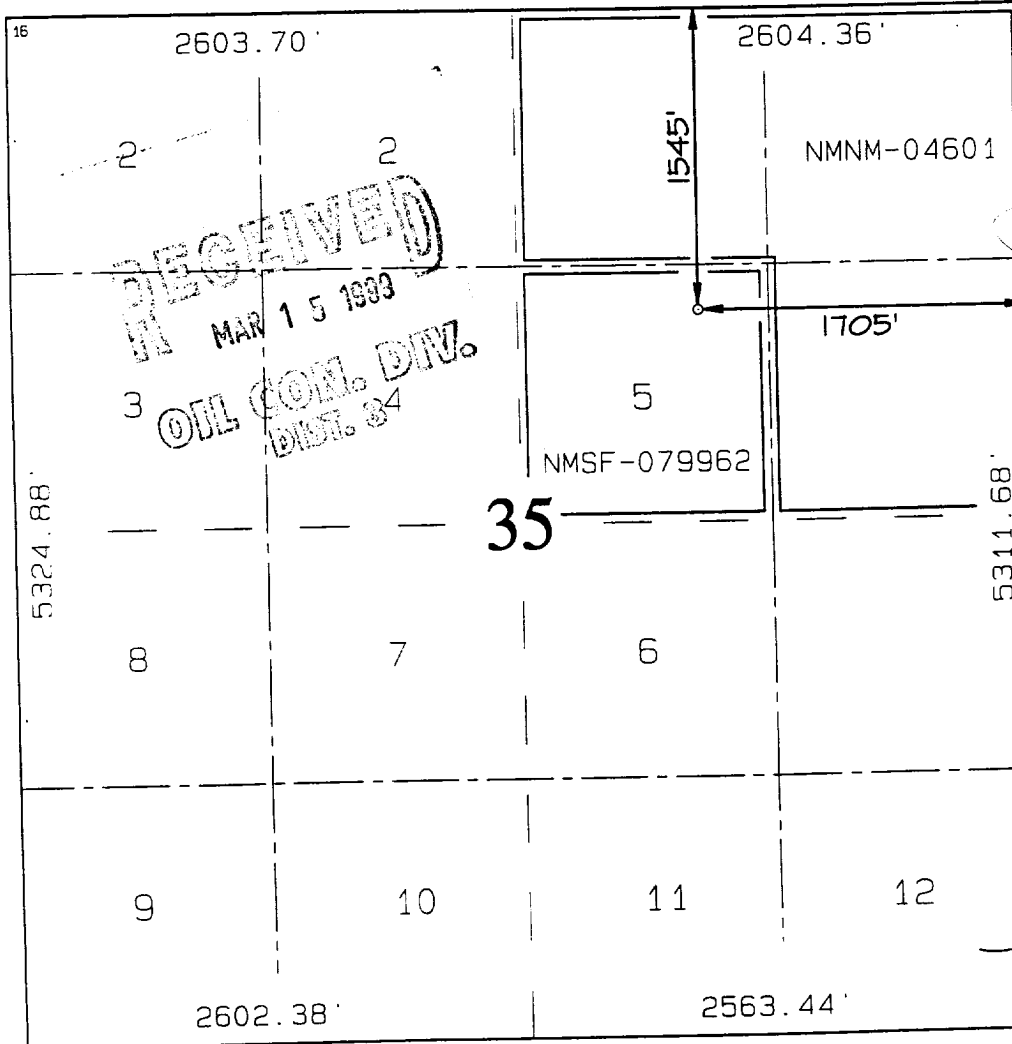
| U. or lot no. | Section | Township | Range | Lot Idn | Feet from the | North/South line | Feet from the | East/West line | County |
|---------------|---------|----------|-------|---------|---------------|------------------|---------------|----------------|----------|
| G | 35 | 30N | 11W | | 1545 | NORTH | 1705 | EAST | SAN JUAN |

¹¹ Bottom Hole Location If Different From Surface

| U. or lot no. | Section | Township | Range | Lot Idn | Feet from the | North/South line | Feet from the | East/West line | County |
|---------------|---------|----------|-------|---------|---------------|------------------|---------------|----------------|--------|
| | | | | | | | | | |

| | | | |
|--|-------------------------------|----------------------------------|-------------------------|
| ¹² Dedicated Acres NE/159.75 | ¹³ Joint or Infill | ¹⁴ Consolidation Code | ¹⁵ Order No. |
|--|-------------------------------|----------------------------------|-------------------------|

NO ALLOWABLE WILL BE ASSIGNED TO THIS COMPLETION UNTIL ALL INTERESTS HAVE BEEN CONSOLIDATED OR A NON-STANDARD UNIT HAS BEEN APPROVED BY THE DIVISION



¹⁷ OPERATOR CERTIFICATION
I hereby certify that the information contained herein is true and complete to the best of my knowledge and belief.

Peggy Bradfield
Signature

Peggy Bradfield
Printed Name

Regulatory Administrator
Title

12-3-98
Date

¹⁸ SURVEYOR CERTIFICATION
I hereby certify that the well location shown on this plat was plotted from field notes of actual surveys made by me or under my supervision, and that the same is true and correct to the best of my belief.

SEPTEMBER 27, 1998
Date of Survey

Signature and Seal of Professional Surveyor

NEALE G. EDWARDS
NEW MEXICO
6857
PROFESSIONAL SURVEYOR

Certificate No. _____

OPERATIONS PLAN

Well Name: Wood #2R
Location: 1545' FNL, 1705' FEL, Section 35, T-30-N, R-11-W
 San Juan County, New Mexico
 Latitude 36° 46.3, Longitude 107° 57.4
Formation: Aztec Pictured Cliffs
Elevation: 5846'GR

| Formation: | Top | Bottom | Contents |
|--------------------|--------------|---------------|-----------------|
| Surface | Nacimiento | 869' | |
| Ojo Alamo | 869' | 994' | aquifer |
| Kirtland | 994' | 1898' | |
| Fruitland | 1898' | 2201' | gas |
| Pictured Cliffs | 2201' | | gas |
| Total Depth | 2401' | | |

Logging Program: SP - Hi Res Ind/Caliper from TD to Surface Casing
 Bulk Den & Den/Neut from TD to top of Kirtland

Mud Program:

| <u>Interval</u> | <u>Type</u> | <u>Weight</u> | <u>Vis.</u> | <u>Fluid Loss</u> |
|-----------------|---------------|---------------|-------------|-------------------|
| 0- 120' | Spud | 8.4-9.0 | 40-50 | no control |
| 120-2401' | Non-dispersed | 8.4-9.5 | 30-60 | no control |

Casing Program (as listed, equivalent, or better):

| <u>Hole Size</u> | <u>Depth Interval</u> | <u>Csq.Size</u> | <u>Wt.</u> | <u>Grade</u> |
|------------------|-----------------------|-----------------|------------|--------------|
| 8 3/4" | 0 - 120' | 7" | 20.0# | J-55 |
| 6 1/4" | 0 - 2401' | 3 1/2" | 9.3# | J-55 |

Tubing Program: - none

Float Equipment: 7" surface casing - saw tooth guide shoe.
 Centralizers will be run in accordance with Onshore Order #2.

3 1/2" production casing - float shoe on bottom. Three centralizers run every other joint above shoe. Four centralizers run every 3rd joint to the base of the Ojo Alamo @ 994'. Two turbolizing type centralizers - one below and one into the base of the Ojo Alamo @ 994'. Standard centralizers thereafter every fourth joint up to the base of the surface pipe.

Wellhead Equipment: 7" x 3 1/2" x 11" 2000 psi screw on independent wellhead.

