

District I  
PO Box 1980, Hobbs, NM 88241-1980

District II  
PO Drawer DD, Artesia, NM 88211-0719

District III  
1000 Rio Brazos Rd., Aztec, NM 87410

District IV  
PO Box 2088, Santa Fe, NM 87504-2088

State of New Mexico  
Energy, Minerals & Natural Resources Department

OIL CONSERVATION DIVISION  
PO Box 2088  
Santa Fe, NM 87504-2088

Form C-102  
Revised February 21, 1994  
Instructions on back  
Submit to Appropriate District Office  
State Lease - 4 Copies  
Fee Lease - 3 Copies

☒ AMENDED REPORT

WELL LOCATION AND ACREAGE DEDICATION PLAT

*API Number 30-045-29798		*Pool Code 72319	*Pool Name Blanco Mesa Verde
*Property Code 008480	*Property Name ROSA UNIT COM		*Well Number 60
*GRID No. 120782	*Operator Name WILLIAMS PRODUCTION COMPANY		*Elevation 6490'

<sup>10</sup> Surface Location

UL or lot no. L	Section 4	Township 31N	Range 6W	Lot Idn	Feet from the 1850	North/South line SOUTH	Feet from the 1185	East/West line WEST	County SAN JUAN
--------------------	--------------	-----------------	-------------	---------	-----------------------	---------------------------	-----------------------	------------------------	--------------------

<sup>11</sup> Bottom Hole Location If Different From Surface

UL or lot no.	Section	Township	Range	Lot Idn	Feet from the	North/South line	Feet from the	East/West line	County
---------------	---------	----------	-------	---------	---------------	------------------	---------------	----------------	--------

<sup>12</sup> Dedicated Acres 345.77 343.23	<sup>13</sup> Joint or Infill	<sup>14</sup> Consolidation Code U	<sup>15</sup> Order No.
--	-------------------------------	---------------------------------------	-------------------------

NO ALLOWABLE WILL BE ASSIGNED TO THIS COMPLETION UNTIL ALL INTERESTS HAVE BEEN CONSOLIDATED  
OR A NON-STANDARD UNIT HAS BEEN APPROVED BY THE DIVISION

15

<sup>17</sup> OPERATOR CERTIFICATION

I hereby certify that the information contained herein is true and complete to the best of my knowledge and belief

*Paul C. Thompson*  
Signature  
Paul C. Thompson  
Printed Name  
Agent  
Title  
3/23/99  
Date

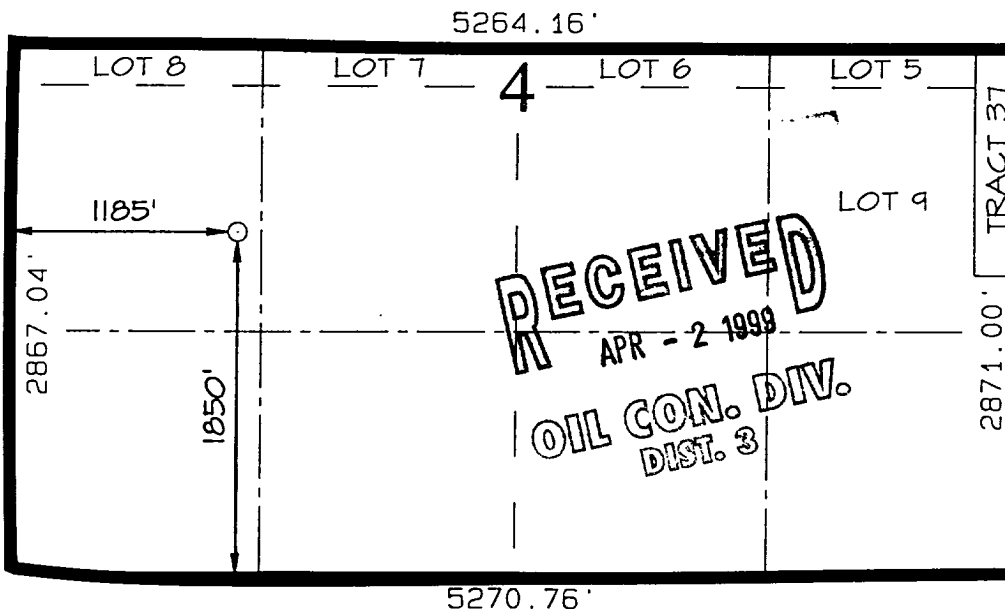
<sup>18</sup> SURVEYOR CERTIFICATION

I hereby certify that the well location shown on this plat was plotted from field notes of actual surveys made by me or under my supervision, and that the same is true and correct to the best of my belief.

FEBRUARY 1, 1999  
Date of Survey

Signature and Seal of Professional Surveyor

NEALE C. EDWARDS  
NEW MEXICO  
6857  
Certificate Number 6857



HOLD C104 FOR ALS (S)