

District I
PO Box 1980, Hobbs, NM 88241-1980
District II
811 S. 1st Street, Artesia, NM 88210-2834
District III
1000 Rio Brazos Rd., Aztec, NM 87410
District IV
2040 South Pacheco, Santa Fe, NM 87505

State of New Mexico
Energy, Minerals & Natural Resources Department

OIL CONSERVATION DIVISION
2040 South Pacheco
Santa Fe, NM 87505

Form C-101
Revised October 18, 199
Instructions on back
Submit to Appropriate District Office
State Lease - 6 Copies
Fee Lease - 5 Copies

☒ AMENDED REPORT

APPLICATION FOR PERMIT TO DRILL, RE-ENTER, DEEPEN, PLUGBACK, OR ADD A ZONE

¹ Operator name and Address Cross Timbers Operating Company 2700 Farmington Ave., Bldg. K. Ste 1 Farmington, NM 87401		² OGRID Number 167067
⁴ Property Code 24507	⁵ Property Name Brown	³ API Number 30-0 45-29900
		⁶ Well No. #3

⁷ Surface Location									
UL or lot no.	Section	Township	Range	Lot. Idn	Feet from the	North/South Line	Feet from the	East/West line	County
0	29	30N	12W		660'	South	2,260'	East	San Juan

⁸ Proposed Bottom Hole Location If Different From Surface									
UL or lot no.	Section	Township	Range	Lot. Idn	Feet from the	North/South Line	Feet from the	East/West line	County
⁹ Proposed Pool 1 Basin Fruitland Coal					¹⁰ Proposed Pool 2				

¹¹ Work Type Code N	¹² Well Type Code G	¹³ Cable/Rotary Cable & Rotary	¹⁴ Lease Type Code Fee	¹⁵ Ground Level Elevation 5,469'
¹⁶ Multiple No	¹⁷ Proposed Depth 1,775'	¹⁸ Formation Fruitland Coal	¹⁹ Contractor	²⁰ Spud Date Spring 2000

²¹ Proposed Casing and Cement Program

Hole Size	Casing Size	Casing weight/foot	Setting Depth	Sacks of Cement	Estimated TOC
8-3/4"	7"	23#, J-55 ST&C	200'	100 sx	Surface
6-1/4"	4-1/2"	10.5#, J-55, STC	1,775	200 sx	Surface

²² Describe the proposed program. If this application is to DEEPEN or PLUG BACK give the data on the present productive zone and proposed new productive zone. Describe the blowout prevention program, if any. Use additional sheets if necessary.

Propose to set surface csg @ 200' w/100 sx cl "B" cmt w/2% CC & 1/4#/sx celloflake. Circ cmt to surface.

Propose to set production csg @ 1,775' w/100 sx 65/35/6 poz cmt followed by 100 sx cl "B" neat cmt. Will use the OH logs to determine final cmt volume w/additional 25% added for excess. Will attempt to circ to surface.

Will use a double BOP (blind & pipe rams) stack.

²³ I hereby certify that the information given above is true and complete to the best of my knowledge and belief.

Signature:

Printed name: Jeffrey W. Patton

Title: Production Engineer

OIL CONSERVATION DIVISION

Approved by:

Title:

SUPERVISOR DISTRICT #3

Approval Date:

Expiration Date:

MAR 16 2000

District I
PO Box 1980, Hobbs, NM 88241-1980

District II
PO Drawer 00, Artesia, NM 88211-0719

District III
1000 Rio Brazos Rd., Aztec, NM 87410

District IV
PO Box 2088, Santa Fe, NM 87504-2088

State of New Mexico
Energy, Minerals & Natural Resources Department

OIL CONSERVATION DIVISION
PO Box 2088
Santa Fe, NM 87504-2088

Form C-102
Revised February 21, 1994
Instructions on back
Submit to Appropriate District Office
State Lease - 4 Copies
Fee Lease - 3 Copies

☒ AMENDED REPORT

WELL LOCATION AND ACREAGE DEDICATION PLAT

*API Number		*Pool Code 71629	*Pool Name BASIN FRUITLAND COAL
*Property Code	*Property Name BROWN		*Well Number 3
*CGRID No. 157067	*Operator Name CROSS TIMBERS OPERATING COMPANY		*Elevation 5469'

¹⁰ Surface Location


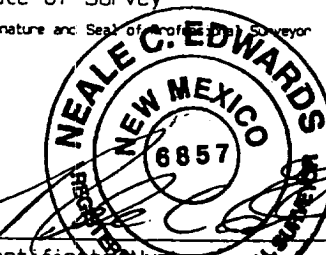
UL or lot no. C	Section 29	Township 30N	Range 12W	Lot Idn	Feet from the 660	North/South line SOUTH	Feet from the 2260	East/West line EAST	County SAN JUAN
--------------------	---------------	-----------------	--------------	---------	----------------------	---------------------------	-----------------------	------------------------	--------------------

¹¹ Bottom Hole Location If Different From Surface

UL or lot no.	Section	Township	Range	Lot Idn	Feet from the	North/South line	Feet from the	East/West line	County
---------------	---------	----------	-------	---------	---------------	------------------	---------------	----------------	--------

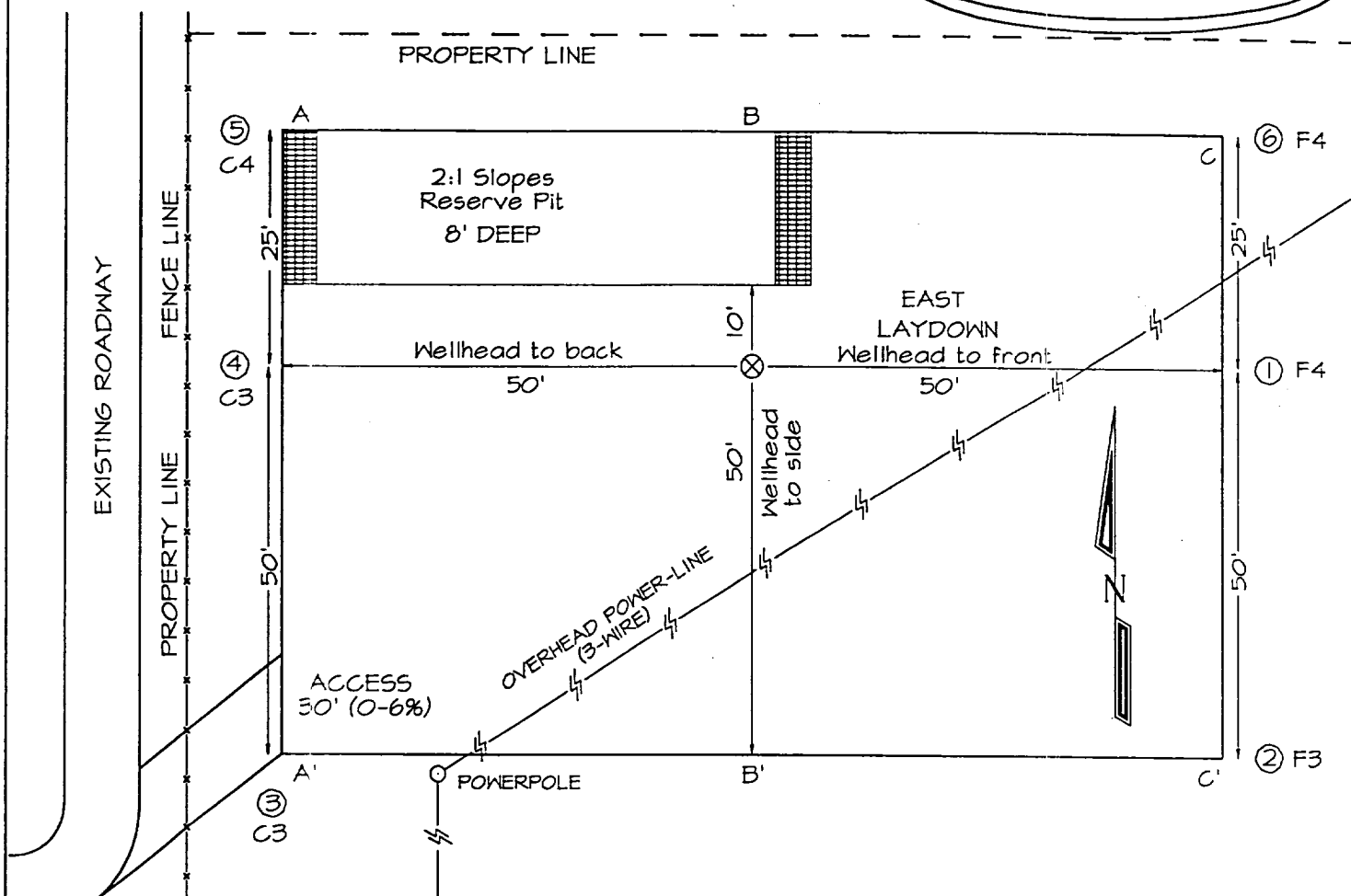
¹² Dedicated Acres 320	¹³ Joint or Infill N	¹⁴ Consolidation Code	¹⁵ Order No.
--------------------------------------	------------------------------------	----------------------------------	-------------------------

NO ALLOWABLE WILL BE ASSIGNED TO THIS COMPLETION UNTIL ALL INTERESTS HAVE BEEN CONSOLIDATED OR A NON-STANDARD UNIT HAS BEEN APPROVED BY THE DIVISION

¹⁶ 2688.84' 2644.62' 5280.00' 5258.88' 29 5280.00' 660' 2260'		¹⁷ OPERATOR CERTIFICATION I hereby certify that the information contained herein is true and complete to the best of my knowledge and belief. Signature <u>Ray Martin</u> Printed Name <u>Ray Martin</u> Title <u>Production Engineer</u> Date <u>3/14/00</u>
	¹⁸ SURVEYOR CERTIFICATION I hereby certify that the well location shown on this plat was plotted from field notes of actual surveys made by me or under my supervision, and that the same is true and correct to the best of my belief. FEBRUARY 24, 2000 Date of Survey Signature and Seal of Professional Surveyor  Certificate Number <u>6857</u>	

CROSS TIMBERS OPERATING COMPANY BROWN #3
660' FSL & 2260' FEL, SECTION 29, T30N, R12W, NMPM,
SAN JUAN COUNTY, NEW MEXICO
GROUND ELEVATION: 5469' DATE: FEBRUARY 24, 2000

LATITUDE: 36°46'43"
LONGITUDE: 108°07'12"



A-A'					
5479'					
5469'					
5459'					
B-B'					
5479'					
5469'					
5459'					
C-C'					
5479'					
5469'					
5459'					

Note: Contractor should call One-Call for location of any marked or unmarked buried pipelines or cables.

CROSS TIMBERS OPERATING COMPANY BROWN #3

660' FSL & 2260' FEL, SECTION 29, T30N, R12W, N.M.P.M.
SAN JUAN COUNTY, NEW MEXICO

