

UNITED STATES
DEPARTMENT OF THE INTERIOR
BUREAU OF LAND MANAGEMENT

APPLICATION FOR PERMIT TO DRILL OR DEEPEN

1a. TYPE OF WORK

DRILL ☒

DEEPEN ☐

b. TYPE OF WELL

OIL WELL ☐

GAS WELL ☒

OTHER ☐

SINGLE ZONE ☒

MULTIPLE ZONE ☐

2. NAME OF OPERATOR

ROBERT L. BAYLESS, PRODUCER LLC 150182

3. ADDRESS AND TELEPHONE NO.

PO BOX 168 FARMINGTON, NM 87499 (505)326-2659

4. LOCATION OF WELL (Report location clearly and in accordance with any State requirements.)*

At surface

790 FSL & 1660 FWL

At proposed prod. zone

SAME

14. DISTANCE IN MILES AND DIRECTION FROM NEAREST TOWN OR POST OFFICE*

15. DISTANCE FROM PROPOSED*

LOCATION TO NEAREST PROPERTY OR LEASE LINE, FT. (Also to nearest drig. unit line, if any)

16. NO. OF ACRES IN LEASE

17. NO. OF ACRES ASSIGNED TO THIS WELL

18. DISTANCE FROM PROPOSED LOCATION* TO NEAREST WELL, DRILLING, COMPLETED, OR APPLIED FOR, ON THIS LEASE, FT.

19. PROPOSED DEPTH

2125

20. ROTARY OR CABLE TOOLS

ROTARY

21. ELEVATIONS (Show whether this location is subject to technical and procedural review pursuant to 43 CFR 3165.3 and appeal pursuant to 43 CFR 3165.4.)

5827 KB

22. APPROX. DATE WORK WILL START*

ASAP

23. PROPOSED CASING AND CEMENTING PROGRAM DRILLING OPERATIONS AUTHORIZED ARE SUBJECT TO COMPLIANCE WITH ATTACHED GENERAL REQUIREMENTS

SIZE OF HOLE	GRADE SIZE OF CASING	WEIGHT PER FOOT	SETTING DEPTH	GENERAL REQUIREMENTS
8 3/4"	7" J-55	23.0#/ft	120 ft	30 sx (37.8 ft ³)
6 1/4"	4 1/2" J-55	10.5#/ft	2125	225 sx (262.0 ft ³)

Will drill 8 3/4" hole to 120 ft and set 120 ft 7" 23.0#/ft new J-55 casing, cemented with 30 sx class B cement, circulated to surface. Will drill 6 1/4" hole to 2125 ft using clear water, natural mud and water loss additives. Induction and density logs will be run. Will set 2125 ft of 4 1/2" 10.5#/ft new J-55 casing, cemented with 225 sx cement, circulated to surface. No abnormal temperature or pressure is anticipated. Estimated mud weight is 8.6#/gal. Pipeline will be included in this APD as per the attached plat.

ESTIMATED TOPS:	DEPTH:	PRESSURE:
Ojo Alamo	100 ft	--
Fruitland	1630 ft	300 psi
Pictured Cliffs	1965 ft	350 psi

RECEIVED
DEC 15 1997
OIL CON. DIV.
DIST. 3

IN ABOVE SPACE DESCRIBE PROPOSED PROGRAM: If proposal is to deepen, give data on present productive zone and proposed new productive zone. If proposal is to drill or deepen directionally, give pertinent data on subsurface locations and measured and true vertical depths. Give blowout preventer program, if any.

24.

SIGNED

TITLE

Engineer

DATE

10/8/97

(This space for Federal or State office use)

PERMIT NO.

APPROVAL DATE

Application approval does not warrant or certify that the applicant holds legal or equitable title to those rights in the subject lease which would entitle the applicant to conduct operations thereon. CONDITIONS OF APPROVAL, IF ANY:

AS/ Duane W. Spencer

APPROVED BY

TITLE

DATE

DEC 12 1997

*See Instructions On Reverse Side

Title 18 U.S.C. Section 1001 makes it a crime for any person knowingly and willfully to make to any department or agency of the

1990年12月29日
 1991年1月1日

District I
PO Box 1980, Hobbs, NM 88241-1980
District II
PO Drawer DD, Artesia, NM 88211-0719
District III
1000 Rio Brazos Rd., Aztec, NM 87410
District IV
PO Box 2088, Santa Fe, NM 87504-2088

State of New Mexico
Energy, Minerals & Natural Resources Department

OIL CONSERVATION DIVISION

PO Box 2088
Santa Fe, NM 87504-2088

Form C-102

Revised February 21, 1994

RECEIVED
Instructions on back
Submit to Appropriate District Office
State Lease - 4 Copies
Fee Lease - 3 Copies

97 NOV 10 PM 12:07
070 FARMINGTON, NM

☐ AMENDED REPORT

WELL LOCATION AND ACREAGE DEDICATION PLAT

¹ API Number 36-045-29506	² Pool Code 77200	³ Pool Name FULCHER KUTZ PICTURED CLIFFS EXT
⁴ Property Code 22186	⁵ Property Name FLOYD	⁶ Well Number 3
⁷ OGRID No. 150182	⁸ Operator Name ROBERT L. BAYLESS, PRODUCER LLC	⁹ Elevation 5822

¹⁰ Surface Location

UL or lot no. (N)	Section	Township	Range	Lot Idn	Feet from the	North/South line	Feet from the	East/West line	County
14	17	30 N	12 W		790	South	1660	West	San Juan

¹¹ Bottom Hole Location If Different From Surface

UL or lot no. 161.20	Section	Township	Range	Lot Idn	Feet from the	North/South line	Feet from the	East/West line	County
¹² Dedicated Acres 161.20	¹³ Joint or Infill	¹⁴ Consolidation Code	¹⁵ Order No.						

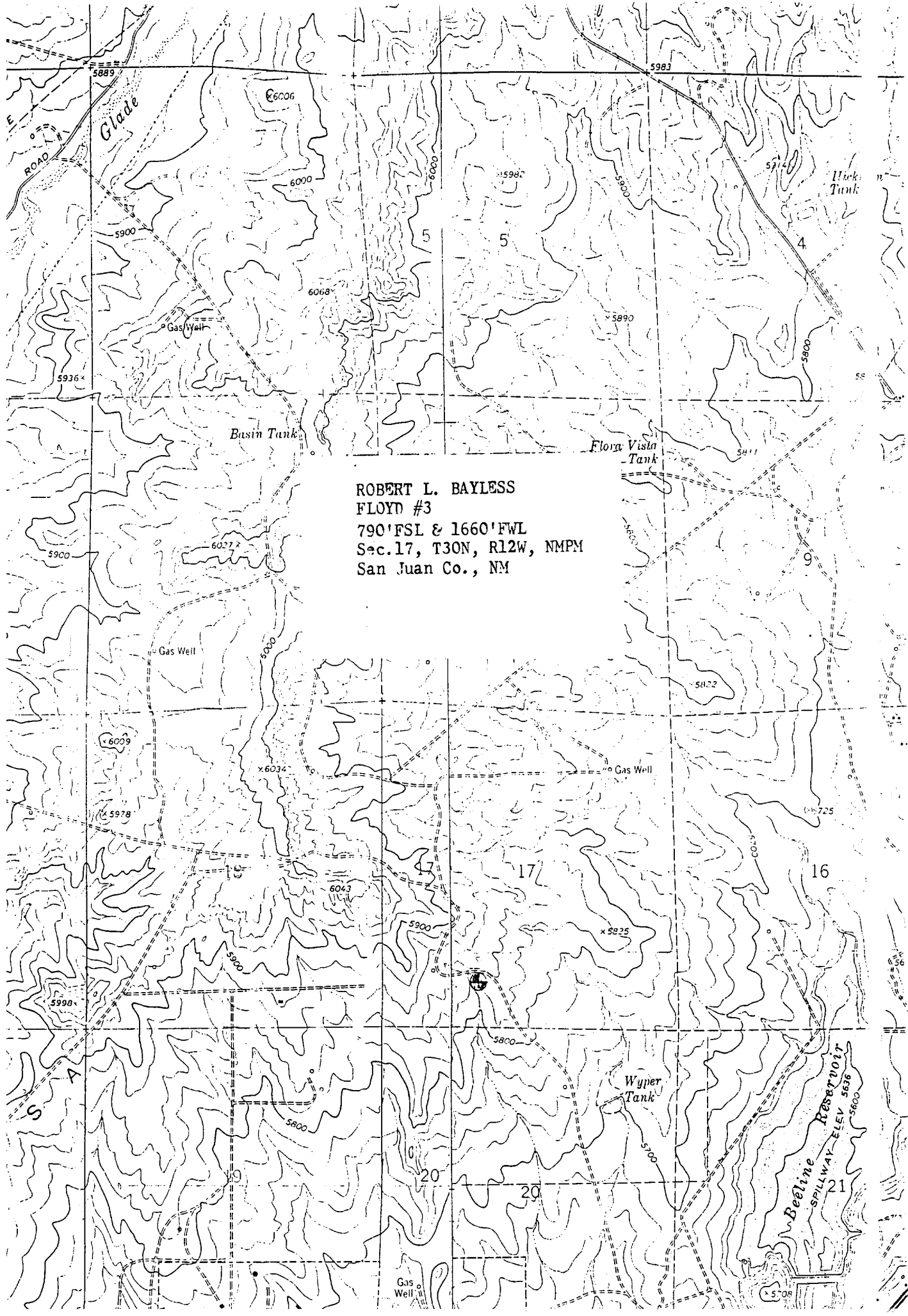
NO ALLOWABLE WILL BE ASSIGNED TO THIS COMPLETION UNTIL ALL INTERESTS HAVE BEEN CONSOLIDATED
OR A NON-STANDARD UNIT HAS BEEN APPROVED BY THE DIVISION

81.12 cu. N 0°04' W	4	3	2	Lot No. (TYP) 1	RECEIVED DEC 15 1997 OIL CON. DIV. DIST. 3	¹⁷ OPERATOR CERTIFICATION I hereby certify that the information contained herein is true and complete to the best of my knowledge and belief. Signature PRICE M. BAYLESS Printed Name ENGINEER Title Date
	5	6				
	12	11 40.42	10	9		
	13	14 790'	15	16		
N 89°05' W 39.51 cu.					¹⁸ SURVEYOR CERTIFICATION I hereby certify that the well location shown on this plat was plotted from field notes of actual surveys made by me or under my supervision, and that the same is true and correct to the best of my belief. Date of Survey Signature and Seal of Professional Surveyor WILLIAM E. SHANKS II Certificate Number 8466	

1984-1985
1986-1987
1988-1989

1990-1991
1992-1993
1994-1995

1996



ROBERT L. BAYLESS
FLOYD #3
790' FSL & 1660' FWL
Sec. 17, T30N, R12W, NMPM
San Juan Co., NM

