

**UNITED STATES
DEPARTMENT OF THE INTERIOR
BUREAU OF LAND MANAGEMENT**

APPLICATION FOR PERMIT TO DRILL, DEEPEN, OR PLUG BACK

1a. Type of Work DRILL	5. Lease Number SF-078204 Unit Reporting Number
1b. Type of Well GAS	6. If Indian, All. or Tribe
2. Operator <i>BURLINGTON RESOURCES</i> Oil & Gas Company	7. Unit Agreement Name
3. Address & Phone No. of Operator PO Box 4289, Farmington, NM 87499 (505) 326-9700	8. Farm or Lease Name Sunray D 9. Well Number 1M
4. Location of Well 975' FNL, 765' FWL Latitude 36° 48.2, Longitude 107° 53.8	10. Field, Pool, Wildcat Blanco MV/Basin DK 11. Sec., Twn, Rge, Mer. (NMPM) D Sec. 21, T-30-N, R-10-W API# 30-045-30002
14. Distance in Miles from Nearest Town 4 miles from Aztec	12. County San Juan 13. State NM
15. Distance from Proposed Location to Nearest Property or Lease Line 765'	17. Acres Assigned to Well 318.88 W/2
16. Acres in Lease	
18. Distance from Proposed Location to Nearest Well, Drig, Compl, or Applied for on this Lease 1100'	
19. Proposed Depth 7530' 7620'	20. Rotary or Cable Tools Rotary
21. Elevations (DF, FT, GR, Etc.) 6377' GR	22. Approx. Date Work will Start
23. Proposed Casing and Cementing Program See Operations Plan attached	DEVELOPING OPERATIONS AUTHORIZED ARE SUBJECT TO COMPLIANCE WITH ATTACHED "GENERAL REQUIREMENTS"
24. Authorized by: <i>Danny Cole</i> Regulatory/Compliance Administrator	Date <u>9-15-99</u>

PERMIT NO. _____ APPROVAL DATE 9/8/00
 APPROVED BY _____ TITLE _____ DATE 9/8/00

Archaeological Report to be submitted

Threatened and Endangered Species Report to be submitted

NOTE: This format is issued in lieu of U.S. BLM Form 3160-3

Title 18 U.S.C. Section 1001, makes it a crime for any person knowingly and willfully to make to any department or agency of the United States any false, fictitious or fraudulent statements or presentations as to any matter within its jurisdiction.

**UNITED STATES
DEPARTMENT OF THE INTERIOR
BUREAU OF LAND MANAGEMENT**

Sundry Notices and Reports on Wells

<p>1. Type of Well GAS</p>	<p>5. Lease Number SF-078204</p>
<p>2. Name of Operator BURLINGTON RESOURCES OIL & GAS COMPANY</p>	<p>6. If Indian, All. or Tribe Name</p>
<p>3. Address & Phone No. of Operator PO Box 4289, Farmington, NM 87499 (505) 326-9700</p>	<p>7. Unit Agreement Name</p>
<p>4. Location of Well, Footage, Sec., T, R, M 975' FNL, 765' FWL, Sec.21, T-30-N, R-10-W, NMPM</p>	<p>8. Well Name & Number Sunray D #1M</p>
	<p>9. API Well No. 30-045-30002</p>
	<p>10. Field and Pool Blanco MV/Basin DK</p>
	<p>11. County and State San Juan Co, NM</p>

12. CHECK APPROPRIATE BOX TO INDICATE NATURE OF NOTICE, REPORT, OTHER DATA

Type of Submission	Type of Action	
<input checked="" type="checkbox"/> Notice of Intent	<input type="checkbox"/> Abandonment	<input checked="" type="checkbox"/> Change of Plans
<input type="checkbox"/> Subsequent Report	<input type="checkbox"/> Recompletion	<input type="checkbox"/> New Construction
<input type="checkbox"/> Final Abandonment	<input type="checkbox"/> Plugging Back	<input type="checkbox"/> Non-Routine Fracturing
	<input type="checkbox"/> Casing Repair	<input type="checkbox"/> Water Shut off
	<input checked="" type="checkbox"/> Altering Casing	<input type="checkbox"/> Conversion to Injection
	<input type="checkbox"/> Other -	

13. Describe Proposed or Completed Operations

It is intended to alter the approved casing depths and cement of the subject well:

Revisions:

Mud Program:

Interval	Type	Weight	Fluid Loss
0-200'	Spud	8.4-9.0	No Control
200-3207'	LSND	8.4-9.0	No Control
3207-7620'	Air/Mist	n/a	n/a

Casing Program:

Hole Size	Depth Interval	Casing Size	Weight	Grade
13-3/8" 14 1/4"	0-200'	13-3/8" 11 3/4"	48# 42	H-40
10-5/8"	0-3207'	8-5/8"	32#	J-55
7-7/8"	3107-7620'	5-1/2"	15.50#	J-55

Tubing Program:

Interval	Weight
0-5609'	1-1/2" 2.75# IJ
0-7620'	1-1/2" 2.90# EUE

Cementing Program:

13-3/8" surface casing - 353 sx Class "B" cement with 0.25 pps flocele and 3% calcium chloride (417 cu.ft. of slurry, 200% excess to circulate to surface).

8-5/8" intermediate casing - Lead with 410 sx Class "B" cement with 3% sodium metasilicate, 5 pps Gilsonite, 0.25 pps flocele. Tail with 90 sx Class "B" cement with 2% sodium metasilicate, 2% calcium chloride, 5 pps Gilsonite and 0.25 pps flocele (1349 cu.ft. of slurry, 100% excess to circulate to surface).

8-5/8" intermediate casing (alternative two stage cement job) - 1st Stage with 231 sx Class "B" cement with 2% sodium metasilicate, 2% calcium chloride, 5 pps Gilsonite and 0.25 pps flocele. 2nd Stage with 327 sx Class "B" cement with 3% sodium metasilicate, 5 pps Gilsonite, 0.25 pps flocele. Stage tool at 2263'. (1349 cu.ft. of slurry, 100% excess to circulate to surface).

5-1/2" production liner - 849 sx Class "B" 50/50 poz with 2% gel, 0.25 pps flocele, 5 pps gilsonite, 0.4% fluid loss, 0.1% retardant (1095 cu.ft. of slurry, 40% excess to circulate to top of liner).

Wellhead:
13-3/8" x 8-5/8" x 1-1/2" EUE x 1-1/2" IJ x 5000 psi tree assembly.

14. I hereby certify that the foregoing is true and correct.

Signed Dana Cole (DWS) Title Regulatory Administrator Date 1/26/00

no

(This space for Federal or State Office use)

APPROVED BY _____ Title _____ Date 9/8/00

CONDITION OF APPROVAL, if any:

District I
PO Box 1980, Hobbs, NM 88241-1980

State of New Mexico
Energy, Minerals & Natural Resources Department

Form C-102
Revised February 21, 1994

District II
PO Drawer DD, Artesia, NM 88211-0719

OIL CONSERVATION DIVISION
PO Box 2088
Santa Fe, NM 87504-2088

Instructions on back
Submit to Appropriate District Office
State Lease - 4 Copies
Fee Lease - 3 Copies

District III
1000 Rio Brazos Rd., Aztec, NM 87410

AMENDED REPORT

District IV
PO Box 2088, Santa Fe, NM 87504-2088

WELL LOCATION AND ACREAGE DEDICATION PLAT

*API Number 30-045 30002		*Pool Code 72319/71599	*Pool Name Blanco Mesaverde/Basin Dakota
*Property Code 7566	*Property Name SUNRAY D		*Well Number 1M
*OGRID No. 14538	*Operator Name BURLINGTON RESOURCES OIL & GAS COMPANY		*Elevation 6377'

¹⁰ Surface Location

UL or lot no.	Section	Township	Range	Lot Idn	Feet from the	North/South line	Feet from the	East/West line	County
D	21	30N	10W		975	NORTH	765	WEST	SAN JUAN

¹¹ Bottom Hole Location If Different From Surface

UL or lot no.	Section	Township	Range	Lot Idn	Feet from the	North/South line	Feet from the	East/West line	County

¹² Dedicated Acres MV:W/318.88 DK:W/318.88	¹³ Joint or Infill	¹⁴ Consolidation Code	¹⁵ Order No.
---	-------------------------------	----------------------------------	-------------------------

NO ALLOWABLE WILL BE ASSIGNED TO THIS COMPLETION UNTIL ALL INTERESTS HAVE BEEN CONSOLIDATED OR A NON-STANDARD UNIT HAS BEEN APPROVED BY THE DIVISION

¹⁶ 	¹⁷ OPERATOR CERTIFICATION I hereby certify that the information contained herein is true and complete to the best of my knowledge and belief Signature Peggy Cole Printed Name Regulatory Administrator Title 9-15-99 Date			
	¹⁸ SURVEYOR CERTIFICATION I hereby certify that the well location shown on this plat was plotted from field notes of actual surveys made by me or under my supervision and that the same is true and correct to the best of my belief. AUGUST 19, 1999 Date of Survey Signature and Seal of Professional Surveyor NEALE C. EDWARDS NEW MEXICO 6857 Certificate No. 6857			

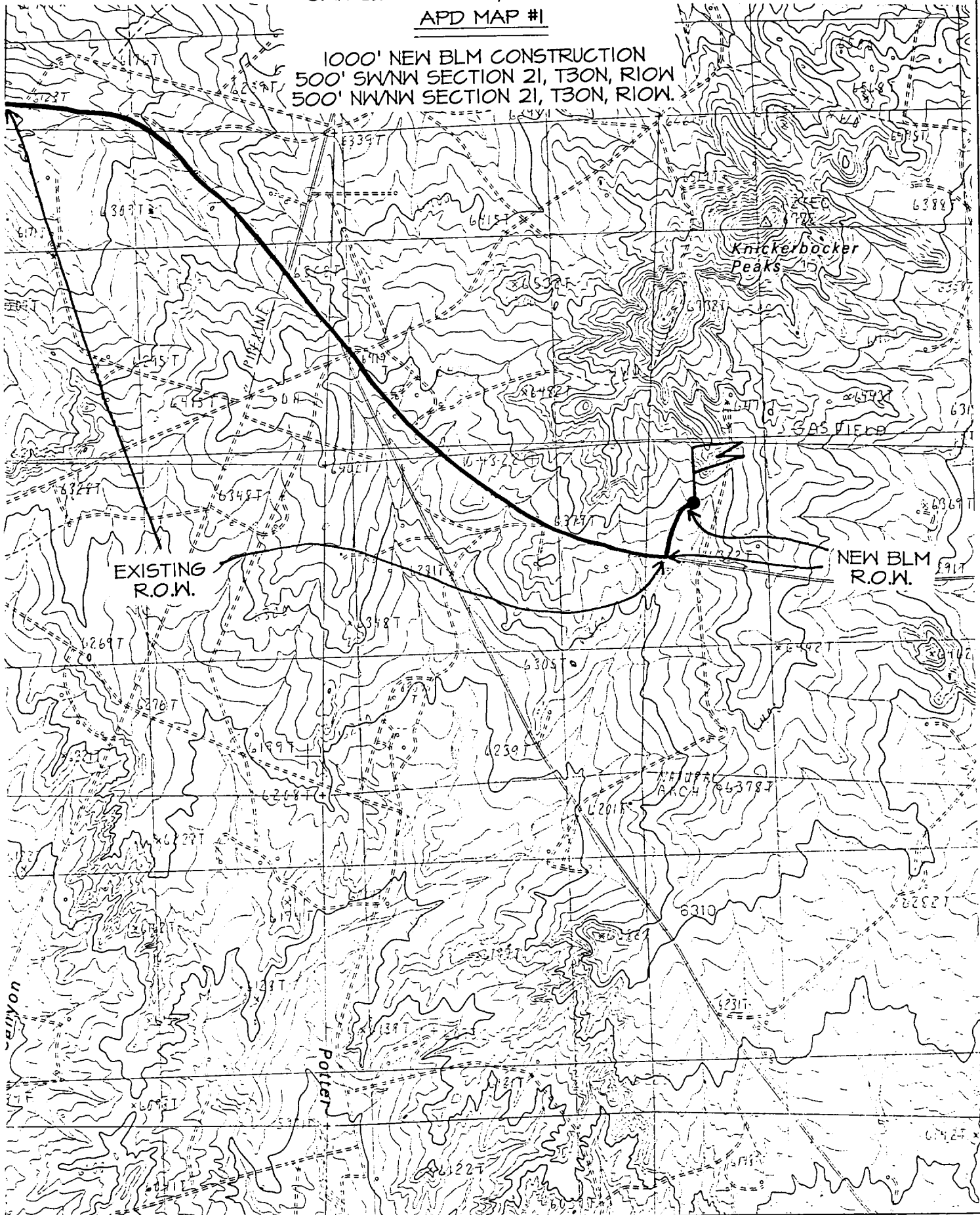
BURLINGTON RESOURCES OIL & GAS COMPANY SUNRAY D #1M

975' FNL & 765' FNL, SECTION 21, T30N, R10W, N.M.P.M.

SAN JUAN COUNTY, NEW MEXICO

APD MAP #1

1000' NEW BLM CONSTRUCTION
500' SWNW SECTION 21, T30N, R10W
500' NWNW SECTION 21, T30N, R10W.



OPERATIONS PLAN

Well Name: Sunray D #1M
Location: 975' FNL, 765' FWL, Sec 21, T-30-N, R-10-W
 San Juan County, NM
 Latitude 36° 48.2, Longitude 107° 53.8
Formation: Blanco Mesa Verde/Basin Dakota
Elevation: 6377' GL

<u>Formation Tops:</u>	<u>Top</u>	<u>Bottom</u>	<u>Contents</u>
Surface	San Jose	1589'	
Ojo Alamo	1589'	1724'	aquifer
Kirtland	1724'	2363'	gas
Fruitland	2363'	2951'	gas
Pictured Cliffs	2951'	3107'	gas
Lewis	3107'	3685'	gas
Intermediate TD	3207'		
Mesa Verde	3685'	3963'	gas
Chacra	3963'	4546'	gas
Massive Cliff House	4546'	4749'	gas
Menefee	4749'	5241'	gas
Massive Point Lookout	5241'	5609'	gas
Mancos	5609'	6471'	gas
Gallup	6471'	7205'	gas
Greenhorn	7205'	7259'	gas
Graneros	7259'	7312'	gas
Dakota	7312'		gas
TD (4 1/2" liner)	7530'		

Logging Program:

Open hole - AIT - TD to intermediate TD
 CNL-CDL, CBL-CCL-GR - intermediate TD to surface

Mud Program:

<u>Interval</u>	<u>Type</u>	<u>Weight</u>	<u>Vis.</u>	<u>Fluid Loss</u>
0- 200'	Spud	8.4-9.0	40-50	no control
200- 3207'	LSND	8.4-9.0	30-60	no control
3207- 7530'	Gas	n/a	n/a	n/a

Pit levels will be visually monitored to detect gain or loss of fluid control.

Casing Program (as listed, the equivalent, or better):

<u>Hole Size</u>	<u>Depth Interval</u>	<u>Csg. Size</u>	<u>Wt.</u>	<u>Grade</u>
12 1/4"	0' - 200'	9 5/8"	32.3#	WC-50
8 3/4"	0' - 3207'	7"	20.0#	J-55
6 1/4"	3107' - 7530'	4 1/2"	10.5#	K-55

See C103 (attached)

Tubing Program:

0' - 7530' — 2 3/8" 4.70# EUE

BOP Specifications, Wellhead and Tests:

Surface to Intermediate TD -

11" 2000 psi minimum double gate BOP stack (Reference Figure #1).
 After nipple-up prior to drilling out surface casing, rams and casing will be tested to 600 psi for 30 minutes.

Intermediate TD to Total Depth -

11" 2000 psi minimum double gate BOP stack (Reference Figure #1).
 After nipple-up prior to drilling out intermediate casing, rams and casing will be tested to 1500 psi for 30 minutes.

Surface to Total Depth -

2" nominal, 2000 psi minimum choke manifold (Reference Figure #3).