

District I
PO Box 1980, Hobbs, NM 88241-1980
District II
811 South First, Artesia, NM 88210
District III
1000 Rio Brazos Rd., Aztec, NM 87410
District IV
2040 South Pacheco. Santa Fe. NM 87505

State of New Mexico
Energy, Minerals & Natural Resources Department

OIL CONSERVATION DIVISION
2040 South Pacheco
Santa Fe, NM 87505

Form C-101
Revised October 18, 1994
Instructions on back
Submit to Appropriate District Office
State Lease - 6 Copies
Fee Lease - 5 Copies



AMENDED REPORT

APPLICATION FOR PERMIT TO DRILL, RE-ENTER, DEEPEN, PLUGBACK, OR ADD A ZONE

| | | |
|--|--|--|
| ¹ Operator Name and Address. Burlington Resources Oil & Gas Company PO Box 4289, Farmington, NM 87499 | | ² OGRID Number 14538 |
| | | ³ API Number 30 - 045- 30073 |
| ⁴ Property Code 6981 | ⁵ Property Name EPNG Com D | ⁶ Well No. 5B |

⁷ Surface Location

| UL or lot no. | Section | Township | Range | Lot Idn | Feet from the | North/South line | Feet from the | East/West line | County |
|---------------|---------|----------|-------|---------|---------------|------------------|---------------|----------------|----------|
| M | 36 | 30N | 8W | | 1280' | South | 660' | West | San Juan |

⁸ Proposed Bottom Hole Location If Different From Surface

| UL or lot no. | Section | Township | Range | Lot Idn | Feet from the | North/South line | Feet from the | East/West line | County |
|---------------|---------|----------|-------|---------|---------------|------------------|---------------|----------------|--------|
| | | | | | | | | | |

| | |
|--|-------------------------------|
| ⁹ Proposed Pool 1 Blanco Mesaverde | ¹⁰ Proposed Pool 2 |
|--|-------------------------------|

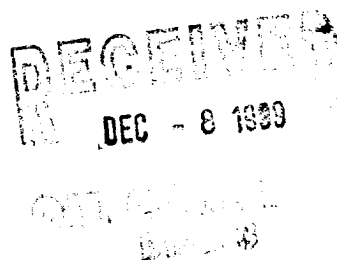
| | | | | |
|-----------------------------------|---------------------------------------|--------------------------------------|--|--|
| ¹¹ Work Type Code N | ¹² Well Type Code G | ¹³ Cable/Rotary Rotary | ¹⁴ Lease Type Code State | ¹⁵ Ground Level Elevation 6288' GR |
| ¹⁶ Multiple N | ¹⁷ Proposed Depth 5675' | ¹⁸ Formation Mesaverde | ¹⁹ Contractor N/a | ²⁰ Spud Date N/a |

²¹ Proposed Casing and Cement Program

| Hole Size | Casing Size | Casing weight/foot | Setting Depth | Sacks of Cement | Estimated TOC |
|-----------|-------------|--------------------|---------------|-----------------|---------------|
| 12 1/4" | 9 5/8" | 32.3# | 200' | 188 cu. ft. | Surface |
| 8 3/4" | 7" | 20# | 3347' | 1007 cu. ft. | Surface |
| 6 1/4" | 4 1/2" | 10.5# | 3247-5675' | 349 cu. ft. | 3247' |
| | | | | | |
| | | | | | |

²² Describe the proposed program. If this application is to DEEPEN or PLUG BACK give the data on the present productive zone and proposed new productive zone. Describe the blowout prevention program, if any. Use additional sheets if necessary.

11" 2000 psi minimum double gate BOP



²³ I hereby certify that the information given above is true and complete to the best of my knowledge and belief.

Signature

Printed name: Peggy Cole

Title: Regulatory/Compliance Administrator

Date:

12-7-99

Phone: 505-326-9700

OIL CONSERVATION DIVISION

Approved by:

Title:

Approval Date:

Conditions of Approval:

Charles T. Perrin

DEPUTY OIL & GAS INSPECTOR, DIST. #3

DEC - 8 1999

Expiration Date:

DEC - 8 2000

Attached ☐

DISTRICT I
P.O. Box 1980 Hobbs, N.M. 88241-1980

State of New Mexico
Energy, Minerals & Natural Resources Department

Form C-102

Revised February 21, 1994

DISTRICT II
P.O. Drawer DD, Artesia, N.M. 88211-0719

Instructions on back
Submit to Appropriate District Office
State Lease - 4 Copies
Fee Lease - 3 Copies

DISTRICT III
1000 Rio Brazos Rd., Aztec, N.M. 87410

OIL CONSERVATION DIVISION

P.O. Box 2088
Santa Fe, NM 87504-2088

DISTRICT IV
PO Box 2088, Santa Fe, NM 87504-2088

☐ AMENDED REPORT

WELL LOCATION AND ACREAGE DEDICATION PLAT

| | | |
|---|--|--|
| ¹ API Number 30-045- <i>30073</i> | ² Pool Code 72319 | ³ Pool Name Blanco Mesaverde |
| ⁴ Property Code 6981 | ⁵ Property Name E.P.N.G. COM D | ⁶ Well Number 5B |
| ⁷ GRID No. 14538 | ⁸ Operator Name BURLINGTON RESOURCES OIL & GAS COMPANY | ⁹ Elevation 6288' |

¹⁰ Surface Location

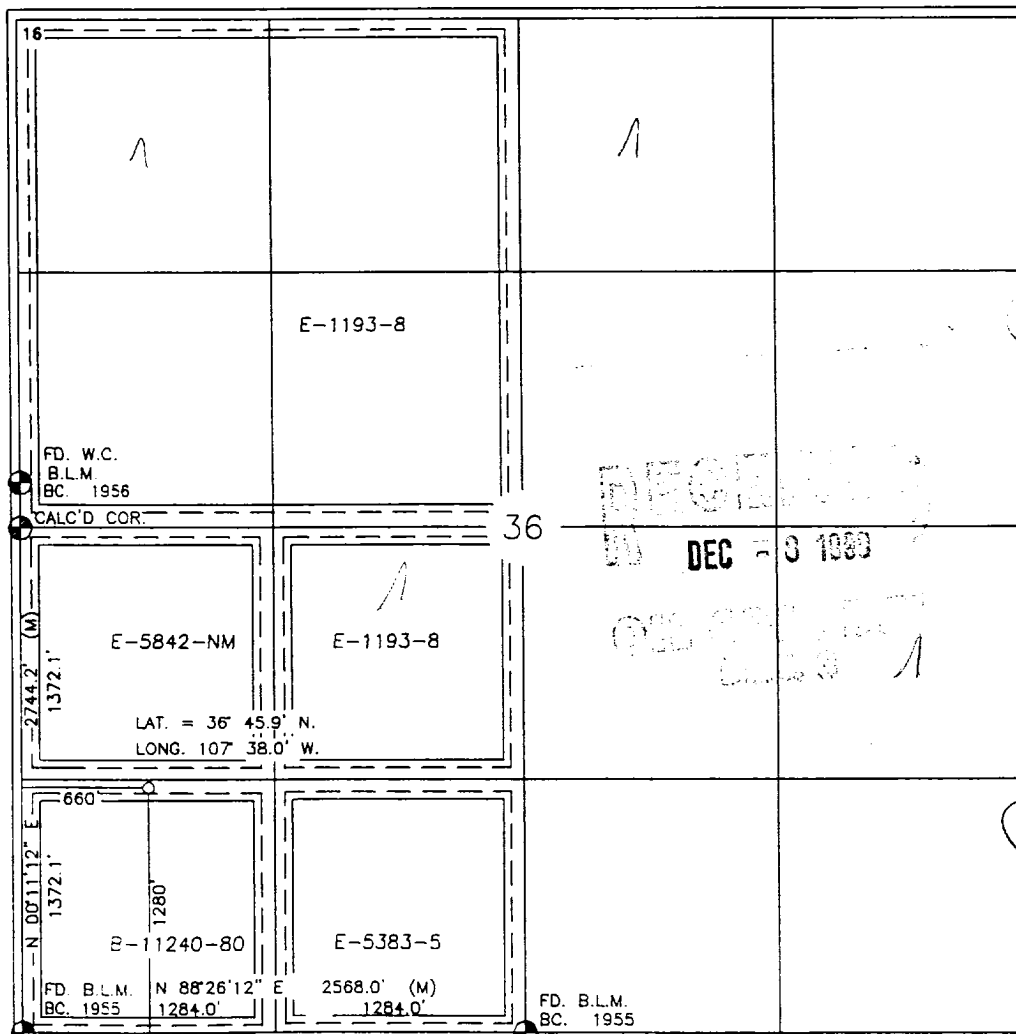
| UL or lot no. | Section | Township | Range | Lot Idn | Feet from the | North/South line | Feet from the | East/West line | County |
|---------------|---------|----------|-------|---------|---------------|------------------|---------------|----------------|----------|
| M | 36 | 30-N | 8-W | | 1280 | SOUTH | 660 | WEST | SAN JUAN |

¹¹ Bottom Hole Location If Different From Surface

| UL or lot no. | Section | Township | Range | Lot Idn | Feet from the | North/South line | Feet from the | East/West line | County |
|---------------|---------|----------|-------|---------|---------------|------------------|---------------|----------------|--------|
| | | | | | | | | | |

| | | | |
|--|-------------------------------|----------------------------------|-------------------------|
| ¹² Dedicated Acres W/320 | ¹³ Joint or Infill | ¹⁴ Consolidation Code | ¹⁵ Order No. |
|--|-------------------------------|----------------------------------|-------------------------|

NO ALLOWABLE WILL BE ASSIGNED TO THIS COMPLETION UNTIL ALL INTERESTS HAVE BEEN CONSOLIDATED
OR A NON-STANDARD UNIT HAS BEEN APPROVED BY THE DIVISION



17 OPERATOR CERTIFICATION

I hereby certify that the information contained herein is true and complete to the best of my knowledge and belief

Peggy Cole
Signature
Peggy Cole
Printed Name
Regulatory Administrator
Title
12-6-99
Date

18 SURVEYOR CERTIFICATION

I hereby certify that the well location shown on this plat was plotted from field notes of actual surveys made by me or under my supervision, and that the same is true and correct to the best of my belief

10-8-99
Date of Survey
Signature
Professional Surveyor
8894
Certificate Number