

District I
PO Box 1980, Hobbs, NM 88241-1980
District II
811 S. 1st Street, Artesia, NM 88210-2834
District III
1000 Rio Brazos Rd., Aztec, NM 87410
District IV
2040 South Pacheco, Santa Fe, NM 87505

State of New Mexico
Energy, Minerals & Natural Resources Department

OIL CONSERVATION DIVISION
2040 South Pacheco
Santa Fe, NM 87505

Form C-101
Revised October 18, 1999

Instructions on back
Submit to Appropriate District O
State Lease - 6 Copie
Fee Lease - 5 Copie

☐ AMENDED REPORT

APPLICATION FOR PERMIT TO DRILL, RE-ENTER, DEEPEN, PLUGBACK, OR ADD A ZONE

¹ Operator name and Address Cross Timbers Operating Company 2700 Farmington Ave., Bldg. K. Ste 1 Farmington, NM 87401		² OGRID Number 167067
⁴ Property Code 22730	⁵ Property Name Hancock Gas Com	API Number 30-04-180087
		Well No. #2

⁷ Surface Location									
UL or lot no. L	Section 15	Township 30 N	Range 12 W	Lot. Idn	Feet from the 1,835	North/South Line South	Feet from the 815	East/West line West	County San Juan

⁸ Proposed Bottom Hole Location If Different From Surface									
UL or lot no.	Section	Township	Range	Lot. Idn	Feet from the	North/South Line	Feet from the	East/West line	County
⁹ Proposed Pool 1 Basin Fruitland Coal					¹⁰ Proposed Pool 2				

¹¹ Work Type Code N	¹² Well Type Code G	¹³ Cable/Rotary Rotary	¹⁴ Lease Type Code Fee	¹⁵ Ground Level Elevation 5,650'
¹⁶ Multiple No	¹⁷ Proposed Depth 2,050'	¹⁸ Formation Fruitland Coal	¹⁹ Contractor Not awarded	²⁰ Spud Date Est 01/00

²¹ Proposed Casing and Cement Program					
Hole Size	Casing Size	Casing weight/foot	Setting Depth	Sacks of Cement	Estimated TOC
8-3/4"	7"	20#. J-55, STC	200'	50	Surface
6-1/4"	4-1/2"	10.5#. J-55, STC	2,050'	190	Surface

²²Describe the proposed program. If this application is to DEEPEN or PLUG BACK give the data on the present productive zone and proposed new productive zone. Describe the blowout prevention program, if any. Use additional sheets if necessary

Surface: 50 sacks of Class "B" cement containing 2% CaCl₂ & 1/4 pps celloflake (14.8 ppg, 1.34 cuft/sx). Circulate cement to surface.
Production: Lead: 65 sx class B cement with 2% D-79 (extender), 1/4 #/sx celloflake & 2% CaCl₂ (11.4 ppg & 2.87 cuft/sx).
Tail: 125 sx class B cement with 2% D-79 (extender), 1/4 #/sx celloflake & 2% CaCl₂ (13.5 ppg & 1.71 cuft/sx).
Remarks: use 25% excess over volume calculated from open hole logs to bring TOC to surface.
BOP program: 11" x 3000 psig double ram BOP.

²³I hereby certify that the information given above is true and complete to the best of my knowledge and belief.

Signature: *Loren W. Fothergill*

Printed name: Loren W. Fothergill

Title: Production Engineer

OIL CONSERVATION DIVISION

Approved by: *SS*

Title: SUPERVISOR DISTRICT # 3

Approval Date: DEC 30 1999

Expiration Date: DEC 30 2000



District I
PO Box 1980, Hobbs, NM 88241-1980

State of New Mexico
Energy, Minerals & Natural Resources Department

Form C-102
Revised February 21, 1994
Instructions on back
Submit to Appropriate District Office
State Lease - 4 Copies
Fee Lease - 3 Copies

District II
PO Drawer DD, Artesia, NM 88211-0719

OIL CONSERVATION DIVISION
PO Box 2088
Santa Fe, NM 87504-2088

District III
1000 Rio Brazos Rd., Aztec, NM 87410

District IV
PO Box 2088, Santa Fe, NM 87504-2088

☐ AMENDED REPORT

WELL LOCATION AND ACREAGE DEDICATION PLAT

*API Number 30-045-30087	*Pool Code 71629	*Pool Name BASIN FRUITLAND COAL
*Property Code 22730	*Property Name HANCOCK GAS COM	*Well Number 2
*GRID No. 167067	*Operator Name CROSS TIMBERS OPERATING COMPANY	*Elevation 5650'

¹⁰ Surface Location

UL or lot no.	Section	Township	Range	Lot Idn	Feet from the	North/South line	Feet from the	East/West line	County
L	15	30N	12W		1835	SOUTH	815	WEST	SAN JUAN

¹¹ Bottom Hole Location If Different From Surface

UL or lot no.	Section	Township	Range	Lot Idn	Feet from the	North/South line	Feet from the	East/West line	County

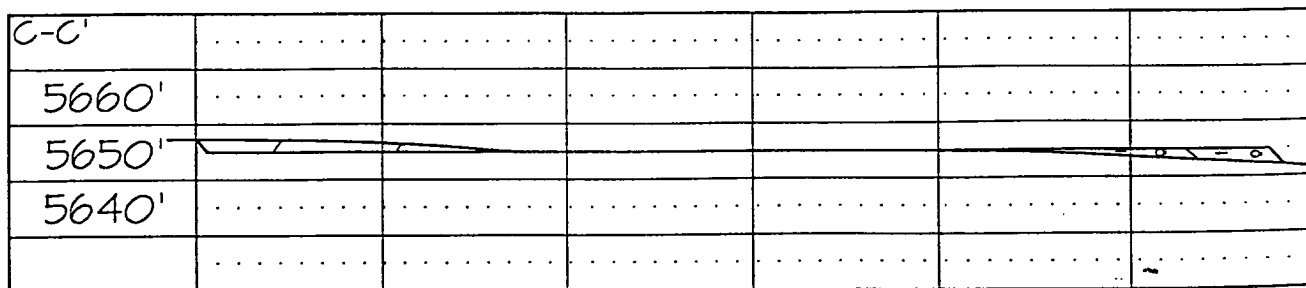
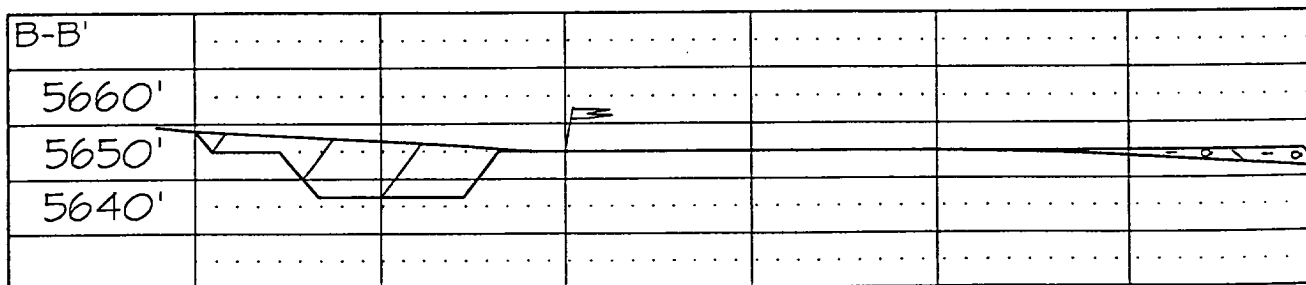
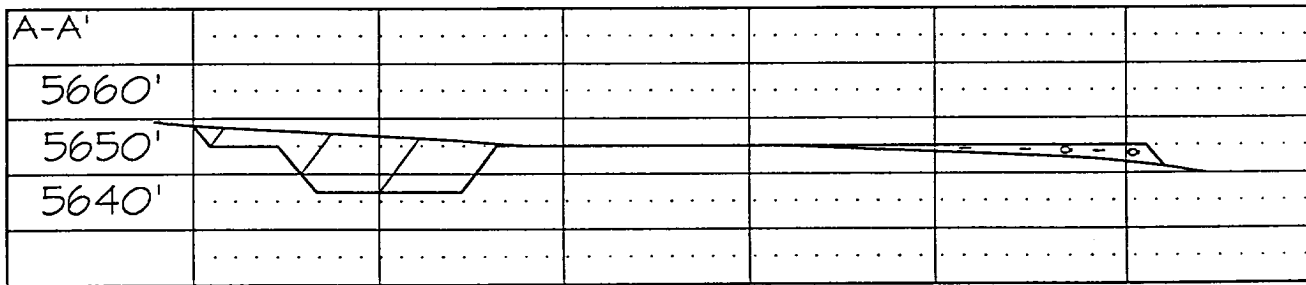
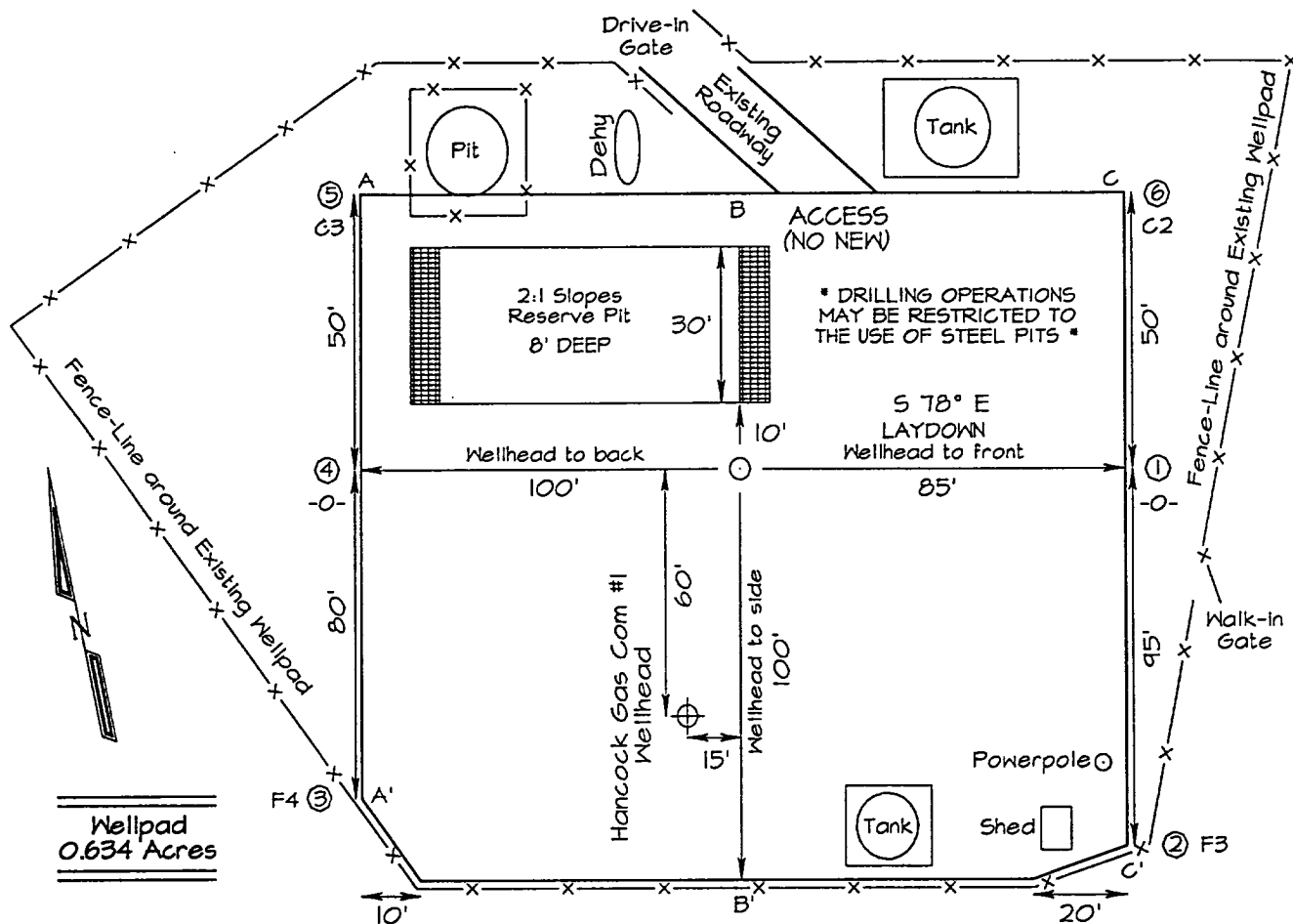
¹² Dedicated Acres 5/320	¹³ Joint or Infill	¹⁴ Consolidation Code	¹⁵ Order No.
----------------------------------------	-------------------------------	----------------------------------	-------------------------

NO ALLOWABLE WILL BE ASSIGNED TO THIS COMPLETION UNTIL ALL INTERESTS HAVE BEEN CONSOLIDATED OR A NON-STANDARD UNIT HAS BEEN APPROVED BY THE DIVISION

<div><p>¹⁶</p><p>5427.84'</p><p>LOT 1</p><p>2653.20'</p><p>LOT 2</p><p>815'</p><p>2645.28'</p><p>1835'</p><p>2492.16'</p><p>2502.72'</p><p>15</p><p>RECEIVED DEC 22 1999 OIL CON. DIV. DIST. 3</p><p>RECEIVED DEC 30 1999 OIL CON. DIV. DIST. 3</p></div>	<div><p>¹⁷ OPERATOR CERTIFICATION</p><p>I hereby certify that the information contained herein is true and complete to the best of my knowledge and belief.</p><p><u>Loren W Fothergill</u></p><p>Signature Loren W. Fothergill</p><p>Printed Name Production Engineer</p><p>Title 12-21-99</p><p>Date</p></div>
	<div><p>¹⁸ SURVEYOR CERTIFICATION</p><p>I hereby certify that the well location shown on this plat was plotted from field notes of actual surveys made by me or under my supervision, and that the same is true and correct to the best of my belief.</p><p>NOVEMBER 13, 1999</p><p>Date of Survey</p><p>Signature and Seal of Professional Surveyor</p><p>NEALE C. EDWARDS NEW MEXICO 6857</p><p>Certification Number 6857</p></div>



CROSS TIMBERS OPERATING COMPANY HANCOCK GAS COM #2
1835' FSL & 815' FWL, SECTION 15, T30N, R12W, NMPM, SAN JUAN COUNTY, NEW MEXICO
GROUND ELEVATION: 5650' DATE: NOVEMBER 13, 1999



Note: Contractor should call One-Call for location of any marked or unmarked buried pipelines or cables on well pad and/or access road at least two (2) working days prior to construction.



CROSS TIMBERS OPERATING COMPANY HANCOCK GAS COM #2

1835' FSL & 815' FWL, SECTION 15, T30N, R12W, N.M.P.M.
SAN JUAN COUNTY, NEW MEXICO

