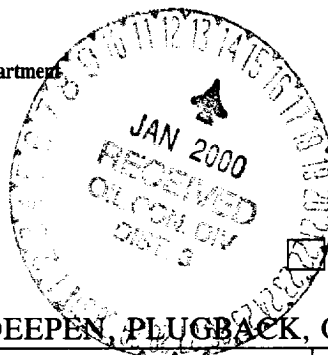


District I
PO Box 1980, Hobbs, NM 88241-1980
District II
811 South First, Artesia, NM 88210
District III
1000 Rio Brazos Rd., Aztec, NM 87410
District IV
2040 South Pacheco, Santa Fe, NM 87505

State of New Mexico
Energy, Minerals & Natural Resources Department

OIL CONSERVATION DIVISION
2040 South Pacheco
Santa Fe, NM 87505



Form C-101
Revised October 18, 1994
Instructions on back
Submit to Appropriate District Office
State Lease - 6 Copies
Fee Lease - 5 Copies
AMENDED REPORT

APPLICATION FOR PERMIT TO DRILL, RE-ENTER, DEEPEN, PLUGBACK, OR ADD A ZONE

¹ Operator Name and Address. Williams Production Company P.O. Box 3102, MS 37-2, Tulsa, OK 74101		² OGRID Number 120782
		³ API Number 30-045-30102
⁴ Property Code 17033	⁵ Property Name Rosa Unit	⁶ Well No. 25A

⁷ Surface Location

UL or lot no.	Section	Township	Range	Lot Idn	Feet from the	North/South line	Feet from the	East/West line	County
G	16	31N	6W		1765'	North	1930'	East	San Juan

⁸ Proposed Bottom Hole Location If Different From Surface

UL or lot no.	Section	Township	Range	Lot Idn	Feet from the	North/South line	Feet from the	East/West line	County
E	15	31	6W		2400' 2420'	North	1010' 772'	West	San Juan

⁹ Proposed Pool Blanco - Mesa Verde	¹⁰ Proposed Pool 2
---	-------------------------------

¹¹ Work Type Code N	¹² Well Type Code G	¹³ Cable/Rotary Rotary	¹⁴ Lease Type Code P	¹⁵ Ground Level Elevation 6330' GR
¹⁶ Multiple No	¹⁷ Proposed Depth 6082' KB	¹⁸ Formation Blanco - Mesa Verde	¹⁹ Contractor Aztec Well Sevice	²⁰ Spud Date April 1, 2000

²¹ Proposed Casing and Cement Program

Hole Size	Casing Size	Casing weight/foot	Setting Depth	Sacks of Cement	Estimated TOC
12-1/4"	9-5/8" K-55	36#	500' KB	255 sx (352 cuft)	Surface
8-3/4"	7" K-55	20#	4645' KB	740 sx (1397cuft)	Surface
6-1/4"	4-1/2"	10.5#	4545' - 6082' KB	320 sx (457 cuft)	Top of Liner

²² Describe the proposed program. If this application is to DEEPEN or PLUG BACK give the data on the present productive zone and proposed new productive zone. Describe the blowout prevention program, if any. Use additional sheets if necessary.

Williams Exploration & Production proposes to drill a directional well with an 12-1/4" hole with water & benex to approx. 500' KB and set 9-5/8" 36# K55 surface casing, cement to surface with 255 sx of Class Type III, 2% CaCl2 (352 cu ft). Then drill 8-3/4" hole to 4645' KB, set 7" K-55 casing. Cement Lead with 520 sx (1088 cu ft) of Premium Lite Poz/Type III, 35/65 with 8% gel, 1% CaCl2; Cement Tail with 220 sx (309 cuft) of class Type III with, 1% CaCl2. Drill 6-1/4" hole to 7167'KB, set 4-1/2" K-55 casing, set production liner, cement Lead with 80 sx of Poz/Class H, 50/50, cement Tail with 240 sx (343 cu ft) of Poz/Class H, 50/50. Run cased hole log (TMDL). While drill pipe in use run not less than one BOP test per day. Set 9-5/8" 36# K-55 production casing from 500'KB to surface, set 7", 20# K-55 casing from 500'KB to 4645'KB, and set 4-1/2" 10.5# K-55 casing from 4545'KB to 6082'KB. Top of cement should circulate to surface (will adjust volumes based upon caliper log). A cement bond log will be run across all intervals to be perforated & find top of cement behind all casing strings. Pressure test 7" & 4-1/2" casing to 3300# for 15 minutes. Run 2-3/8", 2.9#, J-55 EUE tubing with a SN (1.91" ID) on top of bottom joint. Land tubing 25' above bottom Point Lookout perforations. Will test Mesa Verde through perforated casing. Will fracture stimulate and put on for production test. Surface ownership is Federal (BOR). Will negotiate with surface owner for approval to use surface. Formation tops: Ojo Alamo- 2342', Kirtland-245', Fruitland-2917', Pictured Cliffs 3167', Lewis 3467', Cliff House 5352', Menefee 5402', Point Lookout 5632', Mancos 5932', TD 6082', all KB.

²³ I hereby certify that the information given above is true and complete to the best of my knowledge and belief.

Signature:

Printed name: Steve Nelson

Title: Agent, Nelson Consulting, Inc.

Date: January 7, 2000

Phone: 505-327-6331

OIL CONSERVATION DIVISION

Approved by:

Title: SUPERVISOR DISTRICT #3

Approval Date: JAN 14 2000 Expiration Date: JAN 14 2001

Conditions of Approval :
Attached ☐ *Dir Survey*

District I
201 West 1900, Hobbs, NM 88241-1900
District II
111 South First, Artesia, NM 88210
District III
17000 Rto Brown Rd., Aztec, NM 87410
District IV
2040 South Pacheco, Santa Fe, NM 87505

State of New Mexico
Energy, Minerals & Natural Resources Department

OIL CONSERVATION DIVISION
2040 South Pacheco,
Santa Fe, NM 87505

Revised October 18, 1994
Instructions on back
Submit to Appropriate District Office
State Lease - 4 Copies
Fee Lease - 3 Copies

☐ AMENDED REPORT

WELL LOCATION AND ACREAGE DEDICATION PLAT

¹ API Number 30-045-30102	² Pool Code 72319	³ Pool Name Blanco - MV
⁴ Property Code 17033	⁵ Property Name ROSA UNIT	⁶ Well Number 25A
⁷ OGRID No. 120782	⁸ Operator Name WILLIAMS PRODUCTION COMPANY	⁹ Elevation 6330'

¹⁰ Surface Location

UL or lot no.	Section	Township	Range	Lot Idn	Feet from the	North/South line	Feet from the	East/West line	County
G	16	31N	6W		1765'	NORTH	1930'	EAST	SAN JUAN

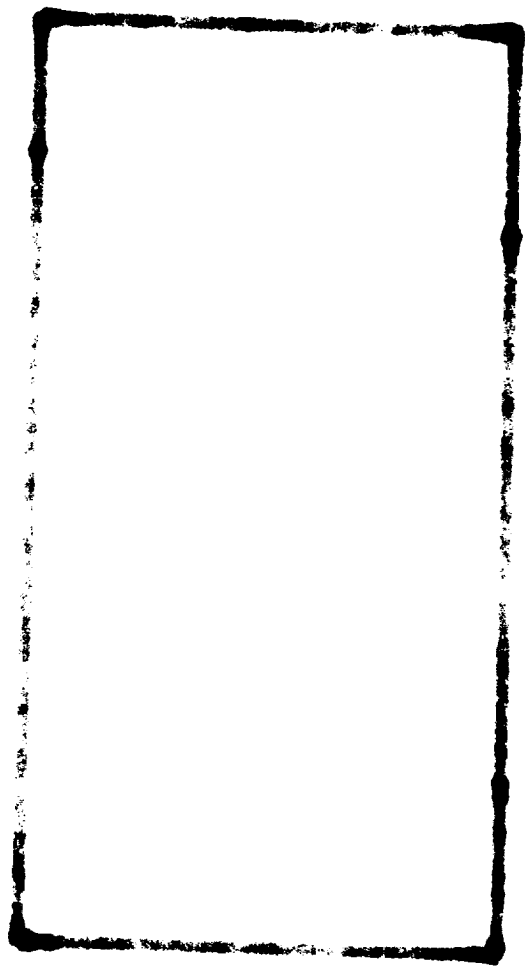
¹¹ Bottom Hole Location If Different From Surface

UL or lot no.	Section	Township	Range	Lot Idn	Feet from the	North/South line	Feet from the	East/West line	County
E	15	31N	6W		2400'	NORTH	1010'	WEST	SAN JUAN

¹² Dedicated Acres	¹³ Joint or Infill	¹⁴ Consolidation Code	¹⁵ Order No.
320 W/2	I	U	

NO ALLOWABLE WILL BE ASSIGNED TO THIS COMPLETION UNTIL ALL INTERESTS HAVE BEEN CONSOLIDATED OR A NON-STANDARD UNIT HAS BEEN APPROVED BY THE DIVISION

¹⁶ S89°58'E 2638.68'	N89°39'E 2626.80'	¹⁷ OPERATOR CERTIFICATION I hereby certify that the information contained herein is true and complete to the best of my knowledge and belief Signature Steve Nelson Printed Name Agent, Nelson Consulting Title January 13, 2000 Date
1765' Surface 2	2400' Bottom 1010'	
Section 16 Tract 40	Section 15 Tract 38	¹⁸ SURVEYOR CERTIFICATION I hereby certify that the well location shown on this plat was plotted from field notes of actual surveys made by me or under my supervision, and that the same is true and correct to the best of my belief. Date of Survey 10/07/99 Signature and Seal NEW MEXICO 11883 Certificate No.
Tract 39	Tract 38	
N89°54'E 2640.00'	N89°41'E 2629.44'	



WILLIAMS PRODUCTION Co.

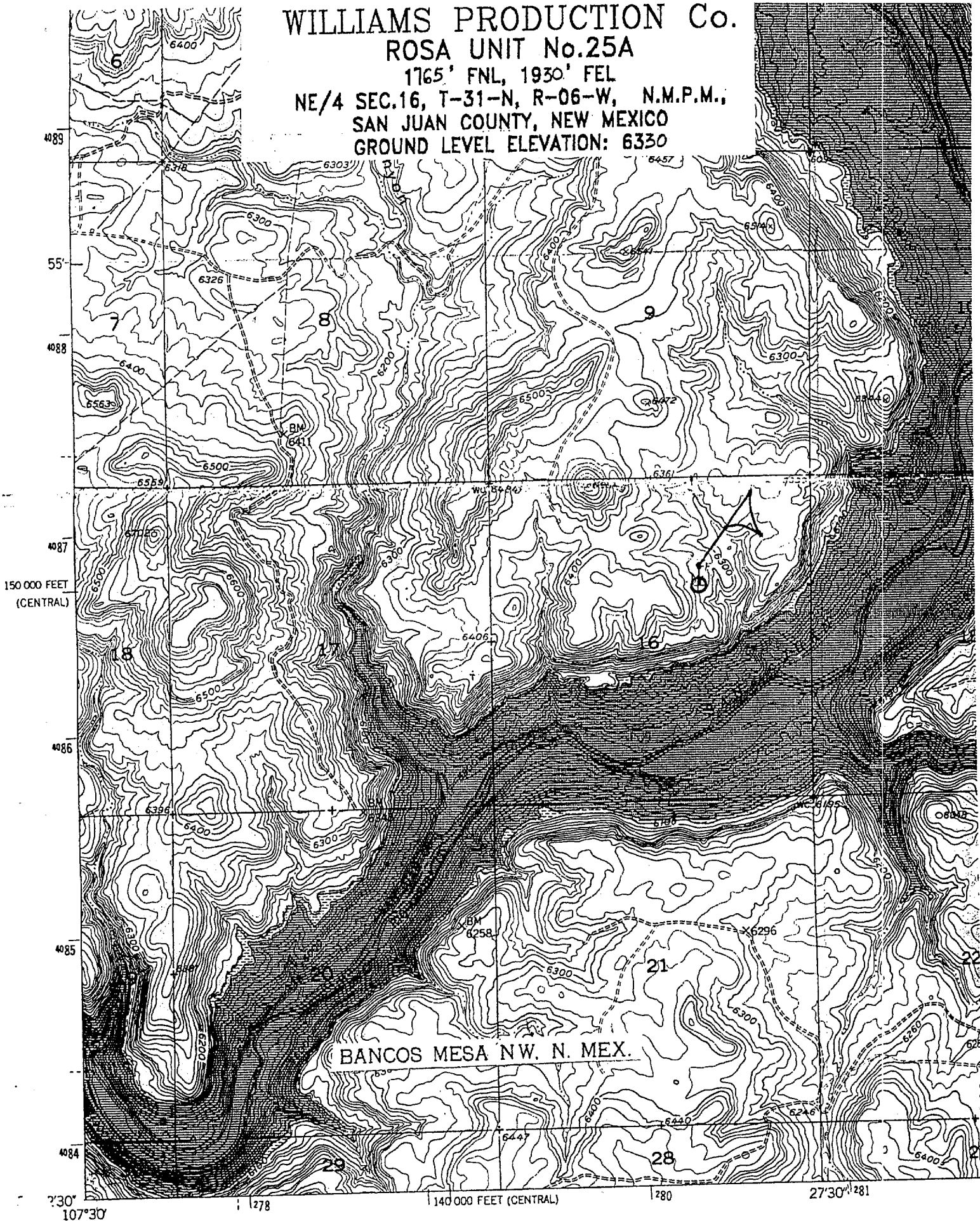
ROSA UNIT No.25A

1765' FNL, 1930' FEL

NE/4 SEC.16, T-31-N, R-06-W, N.M.P.M.,

SAN JUAN COUNTY, NEW MEXICO

GROUND LEVEL ELEVATION: 6330



Mapped, edited, and published by the Geological Survey

Control by USGS and NOS/NOAA

Topography by photogrammetric methods from aerial photographs
taken 1950. Field check 1954

RIVER)
44571 SE

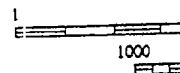
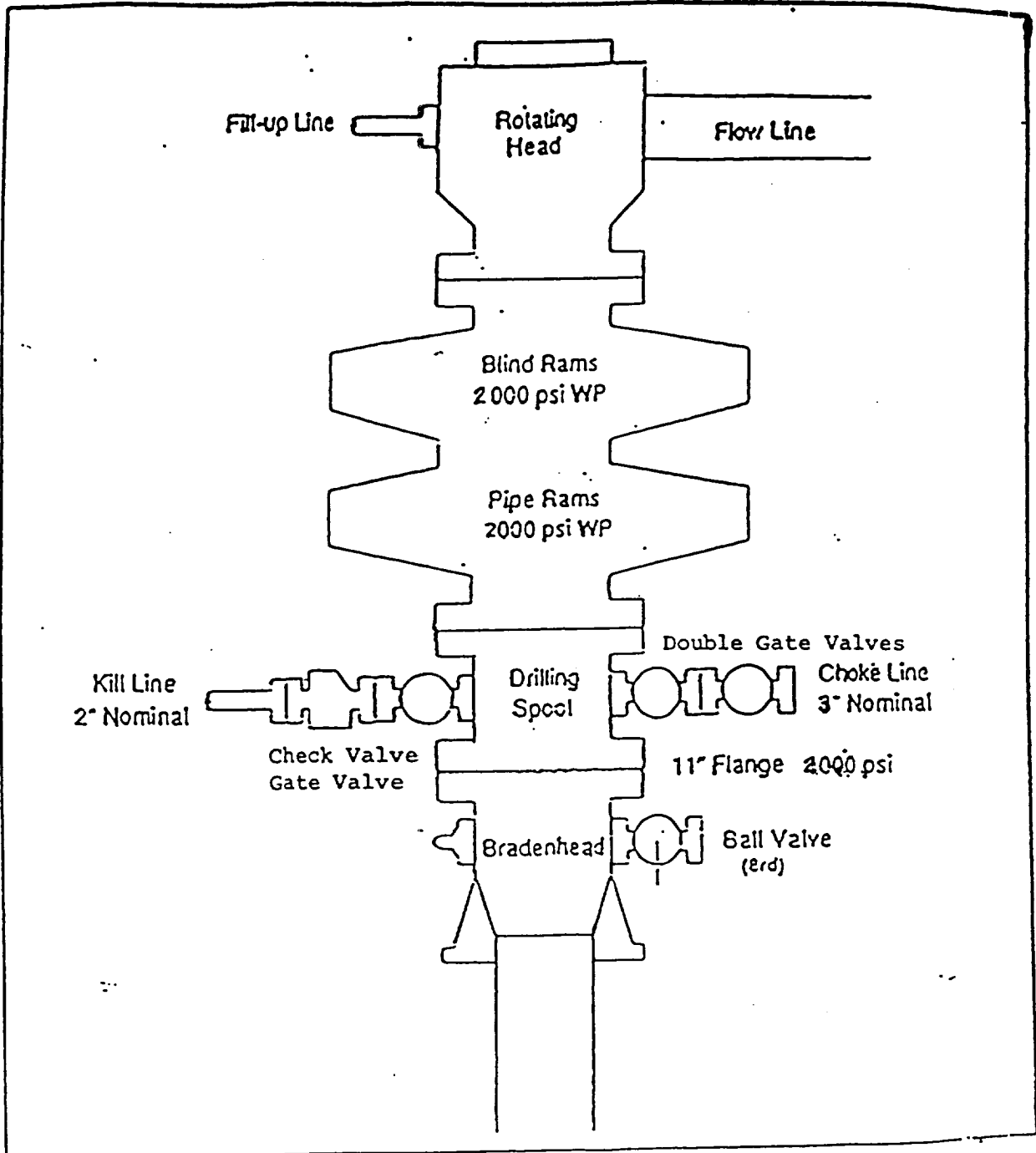


EXHIBIT 1

BOP STACK ARRANGEMENT



All ram type preventers and related equipment will be hydraulically tested at nipple-up and after any use under pressure to 1500 psi. The blind rams will be hydraulically activated and checked for operational readiness each time pipe is pulled out of the hole. All checks of the BOP stack and equipment will be noted on the daily drilling report. The BOP equipment will include a kelly cock with handle, floor safety valve with change overs for each tool joint in the string, and choke manifold all rated to 2000 psi.

EXHIBIT 2

Choke Manifold & Accumulator Schematic

