

UNITED STATES  
DEPARTMENT OF THE INTERIOR  
BUREAU OF LAND MANAGEMENT

## APPLICATION FOR PERMIT TO DRILL OR DEEPEN

## 1a. TYPE OF WORK

DRILL ☒DEEPEN ☐

200 JUN 24 PM 15

## b. TYPE OF WELL

OIL  
WELL ☐GAS  
WELL ☒

OTHER

SINGLE  
ZONE ☒MULTIPLE  
ZONE ☐

## 2. NAME OF OPERATOR

Richardson Operating Co. (303) 830-8000

## 3. ADDRESS AND TELEPHONE NO.

1700 Lincoln, Suite 1700, Denver, Co. 80203

## 4. LOCATION OF WELL (Report location clearly and in accordance with any State requirements.)\*

At surface

1200' FSL &amp; 1515' FEL

At proposed prod. zone

Same

## 14. DISTANCE IN MILES AND DIRECTION FROM NEAREST TOWN OR POST OFFICE\*

5 air miles NE of Kirtland, NM

## 15. DISTANCE FROM PROPOSED\*

LOCATION TO NEAREST  
PROPERTY OR LEASE LINE, FT.  
(Also to nearest drlg. unit line, if any)

1125'

## 16. NO. OF ACRES IN LEASE

160

17. NO. OF ACRES ASSIGNED  
TO THIS WELL

160

18. DISTANCE FROM PROPOSED LOCATION\*  
TO NEAREST WELL, DRILLING, COMPLETED,  
OR APPLIED FOR, ON THIS LEASE, FT.

N/A

## 19. PROPOSED DEPTH

1,300'

## 20. ROTARY OR CABLE TOOLS

Rotary

## 21. ELEVATIONS (Show whether DF, RT, GR, etc.)

5,594' ungraded ground

## 22. APPROX. DATE WORK WILL START\*

Feb. 15, 2000

## 23.

## PROPOSED CASING AND CEMENTING PROGRAM

SIZE OF HOLE	GRADE, SIZE OF CASING	WEIGHT PER FOOT	SETTING DEPTH	QUANTITY OF CEMENT
8-3/4"	7" (K-55)	20#	120'	≈36 cu ft & to surface
6-1/4"	4-1/2" (K-55)	10.5#	1,300'	≈235 cu ft & to surface

On sited with Danny Randall.

This action is subject to technical and  
procedural review pursuant to 43 CFR 3165.3  
and appeal pursuant to 43 CFR 3165.4.DRILLING OPERATIONS AUTHORIZED ARE  
SUBJECT TO COMPLIANCE WITH ATTACHED  
"GENERAL REQUIREMENTS"

IN ABOVE SPACE DESCRIBE PROPOSED PROGRAM: If proposal is to deepen, give data on present productive zone and proposed new productive zone. If proposal is to drill or deepen directionally, give pertinent data on subsurface locations and measured and true vertical depths. Give blowout preventer program, if any.

cc: BLM (&amp; OCD) Colby

24.

SIGNED

TITLE

Consultant (505) 466-8120

DATE

01-23-00

(This space for Federal or State office use)

PERMIT NO.

APPROVAL DATE

Application approval does not warrant or certify that the applicant holds legal or equitable title to those rights in the subject lease which would entitle the applicant to conduct operations thereon.  
CONDITIONS OF APPROVAL, IF ANY:

ahsc

APPROVED BY

/s/ Charlie Beecham

TITLE

DATE

MAR 2 2000

\*See Instructions On Reverse Side

District I  
PO Box 1980, Hobbs, NM 88241-1980  
District II  
PO Drawer DD, Artesia, NM 88211-0719  
District III  
1000 Rio Brazos Rd., Aztec, NM 87410  
District IV  
PO Box 2088, Santa Fe, NM 87504-2088

State of New Mexico  
Energy, Minerals & Natural Resources Department

OIL CONSERVATION DIVISION  
PO Box 2088  
Santa Fe, NM 87504-2088

Form C-102  
Revised February 21, 1994  
Instructions on back  
Submit to Appropriate District Office  
State Lease - 4 Copies  
Fee Lease - 3 Copies

200 JAN 24 PM 4:27 ☒ AMENDED REPORT

WELL LOCATION AND ACREAGE DEDICATION PLAT

API Number 30-045-30114		Pool Code 86620	Pool Name TWIN MOUNDS PIC. CLF. EXTENSION
Property Code 23606	Property Name WF Federal 20		Well Number 3
OGRID No. 019219	Operator Name RICHARDSON OPERATING COMPANY		Elevation 5594'

10 Surface Location

UL or lot no. 0.	Section 20	Township 30 N	Range 14 W	Lot Idn	Feet from the 1200	North/South line South	Feet from the 1515	East/West line East	County San Juan
---------------------	---------------	------------------	---------------	---------	-----------------------	---------------------------	-----------------------	------------------------	--------------------

11 Bottom Hole Location If Different From Surface

UL or lot no.	Section	Township	Range	Lot Idn	Feet from the	North/South line	Feet from the	East/West line	County
---------------	---------	----------	-------	---------	---------------	------------------	---------------	----------------	--------

12 Dedicated Acres	13 Joint or Infill	14 Consolidation Code	15 Order No.
--------------------	--------------------	-----------------------	--------------

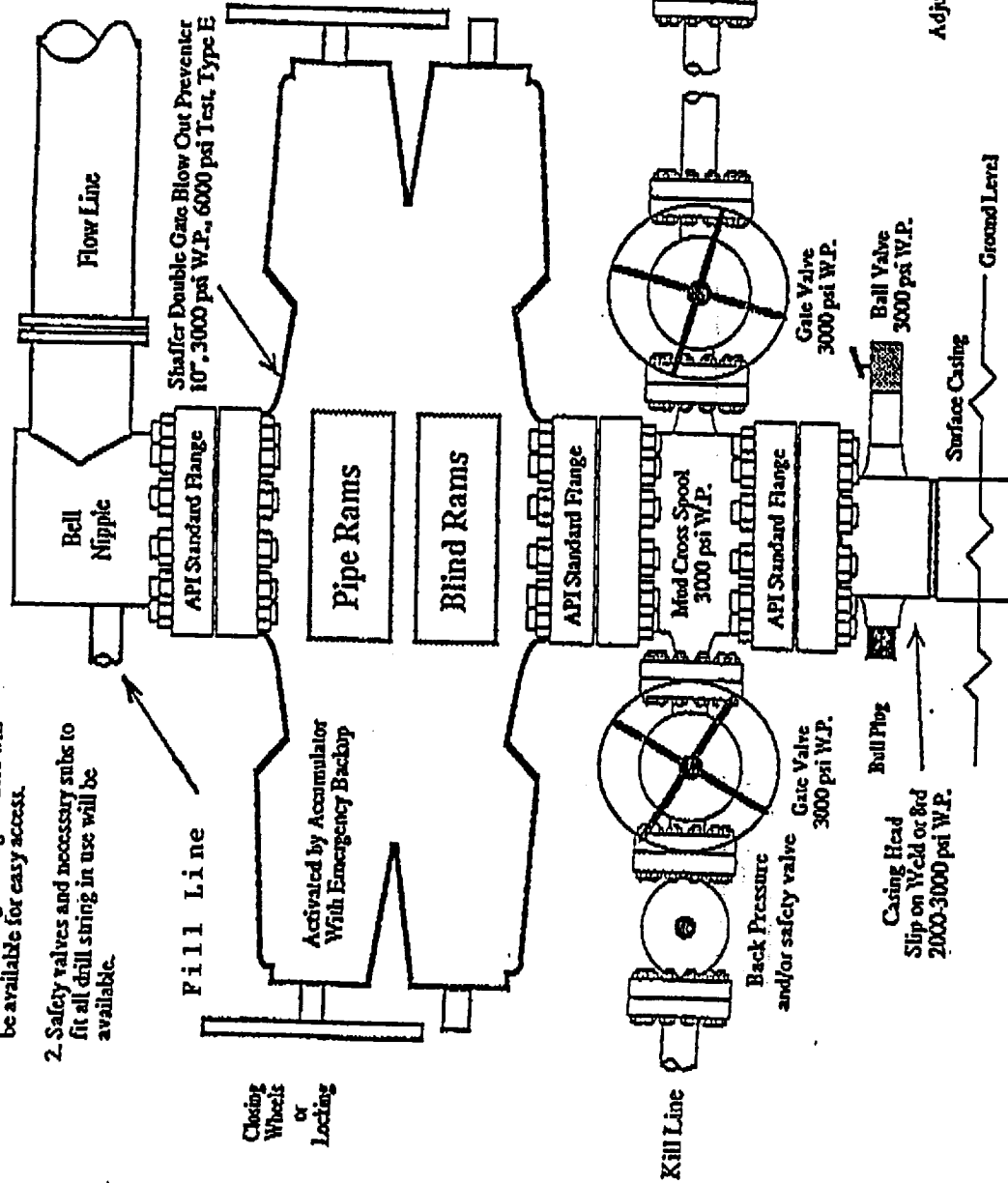
NO ALLOWABLE WILL BE ASSIGNED TO THIS COMPLETION UNTIL ALL INTERESTS HAVE BEEN CONSOLIDATED  
OR A NON-STANDARD UNIT HAS BEEN APPROVED BY THE DIVISION

16			17 OPERATOR CERTIFICATION I hereby certify that the information contained herein is true and complete to the best of my knowledge and belief  Signature <u>Brian Wood</u> Printed Name <u>BRIAN WOOD</u> Title <u>CONSULTANT</u> Date <u>JAN. 23, 2000</u>
			18 SURVEYOR CERTIFICATION I hereby certify that the well location shown on this plat was plotted from field notes of actual surveys made by me or under my supervision, and that the same is true and correct to the best of my belief.  Date of Survey <u>10-2-2000</u> Signature <u>G. HUDGINS</u> Seal of Professional Surveyor  Certificate Number

# Pressure Control Equipment

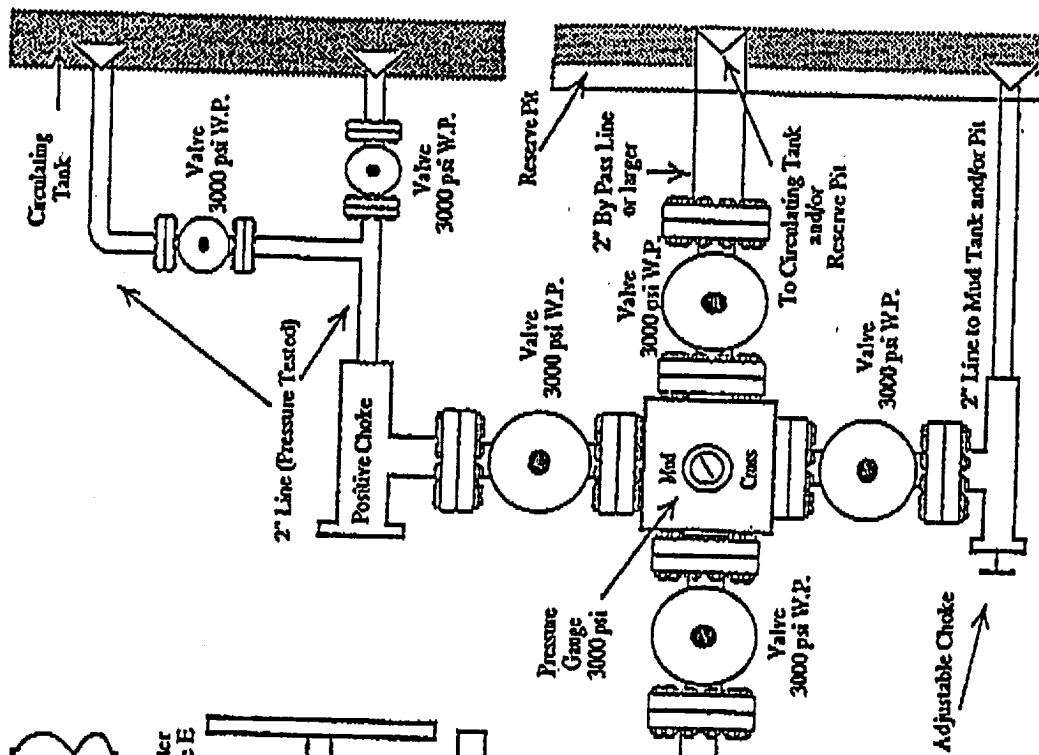
Note: 1. An upper Kelly cock valve will be utilized during drilling. Handle will be available for easy access.

2. Safety valves and necessary sub to fit all drill string in use will be available.



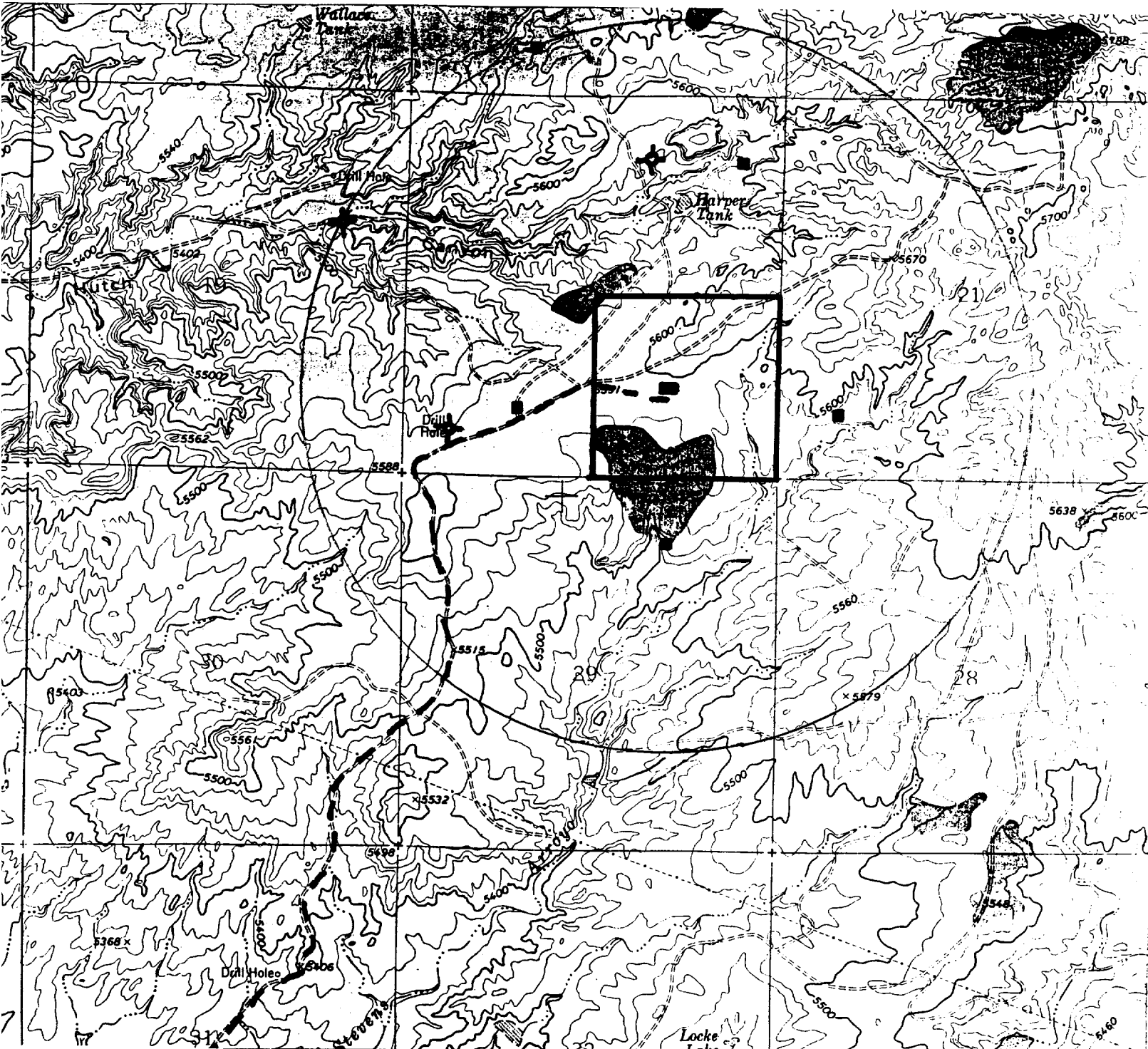
Note: This equipment is designed to meet requirements for a 2-M rating standard per 43 CFR part 3160 (amended). Proper operation and testing of equipment will be carried out per standard. 2,000 psi equipment can be substituted in the drawing to meet minimum requirements per standard.

Minimum 2" Choke Line.  
Minimum 2" Kill Line.  
At Least One 2" Minimum Kill Line Valve.



Richardson Operating Co.  
WF Federal 20 #3  
1200' FSL & 1515' FEL  
Sec. 20, T. 29 N., R. 14 W.  
San Juan County, New Mexico

PAGE 11



PROPOSED WELL: ■

EXISTING WELL: ■

LEASE LINE: ┌

EXISTING ROAD: - - -

**PERMITS WEST** INC.  
PROVIDING PERMITS for LAND USERS