

UNITED STATES
DEPARTMENT OF THE INTERIOR
BUREAU OF LAND MANAGEMENT

APPLICATION FOR PERMIT TO DRILL, DEEPEN, OR PLUG BACK

1a. Type of Work DRILL	5. Lease Number NMF-82815 Unit Reporting Number
1b. Type of Well GAS	6. If Indian, All. or Tribe
2. Operator BURLINGTON RESOURCES Oil & Gas Company	7. Unit Agreement Name
3. Address & Phone No. of Operator PO Box 4289, Farmington, NM 87499 (505) 326-9700	8. Farm or Lease Name Lewis Park
4. Location of Well 1075' FSL, 1157' FEL Latitude 36° 53.6, Longitude 107° 37.5	9. Well Number 2
	10. Field, Pool, Wildcat Fruitland / WC-31-NW-12P 11. Sec., Twn, Rge, Mer. (NMPM) P Sec. 13, T-31-N, R-8-W API # 30-045-30153
14. Distance in Miles from Nearest Town 10 miles from Navajo Dam	12. County San Juan
	13. State NM
15. Distance from Proposed Location to Nearest Property or Lease Line 1075'	
16. Acres in Lease	17. Acres Assigned to Well 160
18. Distance from Proposed Location to Nearest Well, Drig, Compl, or Applied for on this Lease 60'	
19. Proposed Depth 3960'	20. Rotary or Cable Tools Rotary
21. Elevations (DF, FT, GR, Etc.) 6551' GR	22. Approx. Date Work will Start
23. Proposed Casing and Cementing Program See Operations Plan attached	DRILLING OPERATIONS AUTHORIZED ARE SUBJECT TO COMPLIANCE WITH ATTACHED "GENERAL REQUIREMENTS"
24. Authorized by: <u><i>Sergey Cole</i></u> Regulatory/Compliance Administrator	<u>12-14-99</u> Date

PERMIT NO. _____

APPROVAL DATE _____

APPROVED BY /s/ Charlie Beecham

TITLE _____

DATE _____

Archaeological Report to be submitted

Threatened and Endangered Species Report to be submitted

NOTE: This format is issued in lieu of U.S. BLM Form 3160-3

Title 18 U.S.C. Section 1001, makes it a crime for any person knowingly and willfully to make to any department or agency of the United States any false, fictitious or fraudulent statements or presentations as to any matter within its jurisdiction.

chse

NMOCD

DISTRICT II
P.O. Drawer DD, Artesia, N.M. 88211-0719

DISTRICT III
1000 Rio Brazos Rd., Aztec, N.M. 87410

DISTRICT IV
PO Box 2088, Santa Fe, NM 87504-2088

OIL CONSERVATION DIVISION

P.O. Box 2088
Santa Fe, NM 87504-2088

☐ AMENDED REPO

WELL LOCATION AND ACREAGE DEDICATION PLAT

'API Number 30-045-30153	'Pool Code 80690	South Los Pinos WC-31N8W13	'Pool Name Fruitland Pictured Cliffs ext
'Property Code 7260	'Property Name LEWIS PARK		'Well Number 2
'OGRID No. 14538	'Operator Name BURLINGTON RESOURCES OIL & GAS COMPANY		'Elevation 6551'

¹⁰ Surface Location

UL or lot no.	Section	Township	Range	Lot ldn	Feet from the	North/South line	Feet from the	East/West line	County
P	13	31-N	8-W		1075	SOUTH	1157	EAST	SAN JUAN

¹¹ Bottom Hole Location If Different From Surface

UL or lot no.	Section	Township	Range	Lot Idn	Feet from the	North/South line	Feet from the	East/West line	County
12 Dedicated Acres SE/160		13 Joint or Infill		14 Consolidation Code			15 Order No.		

NO ALLOWABLE WILL BE ASSIGNED TO THIS COMPLETION UNTIL ALL INTERESTS HAVE BEEN CONSOLIDATED
OR A NON-STANDARD UNIT HAS BEEN APPROVED BY THE DIVISION

18

13

SF- 82815

LAT. = 36° 53.6' N.
LONG. = 108° 37.4' W.

5242.69'(M)

1075'

1157'

2561.56'(M)

N 00-35-26 W

CALC

FD. 1954
BLM BRASS
CAP

N 89-21-01 W

APR 2000
RECEIVED
OIL CON. DIV.
DIST. 3

17 OPERATOR CERTIFICATIO

I hereby certify that the information contained herein is true and complete to the best of my knowledge and belief.

Signature

Peggy Cole

Printed Name _____

Regulatory Administrator

1000 1000 1000 1000 1000

Date _____

18 SURVEYOR CERTIFICATION

I hereby certify that the well location shown on this map was plotted from field notes of actual surveys made by me or under my supervision and that the same is true and correct to the best of my belief.

Date of Survey _____

Signature and Seal of Professional Surveyor

8894

Certificate Number

OPERATIONS PLAN

Well Name: Lewis Park #2
Location: 1075' FSL, 1157' FEL, Section 8, T-31-N, R-8-W
San Juan County, New Mexico
Latitude 36° 53.6, Longitude 107° 37.5
Formation: WC:31N8W13P Pictured Cliffs
Elevation: 6551' GL

Formation:	Top	Bottom	Contents
Surface	San Jose	2307'	
Ojo Alamo	2307'	2396'	aquifer
Kirtland	2396'	3126'	gas
Fruitland	3126'	3463'	gas
Pictured Cliffs	3463'	3657'	gas
Lewis	3657'		
Total Depth	3960'		

Logging Program: 2960' to TD - GR-SP-IND-CNL-CDL-CAL
Surface to TD - GR-SP-IND-CAL

Coring Program: None

Mud Program:

<u>Interval</u>	<u>Type</u>	<u>Weight</u>	<u>Vis.</u>	<u>Fluid Loss</u>
0-200'	Spud	8.4-9.0	40-50	no control
200-3960'	LSND	8.4-9.0	40-60	no control

Casing Program (as listed, equivalent, or better):

<u>Hole Size</u>	<u>Depth Interval</u>	<u>Csg. Size</u>	<u>Wt.</u>	<u>Grade</u>
12 1/4"	0 - 200'	8 5/8"	24.0#	K-55
6 1/4"	0 - 3960'	4 1/2"	10.5#	K-55

Tubing Program: 2 3/8" 4.7# J-55 to TD

Float Equipment: 8 5/8" surface casing - saw tooth guide shoe.
Centralizers will be run in accordance with Onshore Order #2.

4 1/2" production casing - float shoe on bottom. Three centralizers run every other joint above shoe. Seven centralizers run every 3rd joint to the base of the Ojo Alamo @ 2396'. Two turbolizing type centralizers - one below and one into the base of the Ojo Alamo @ 2396'. Standard centralizers thereafter every fourth joint up to the base of the surface pipe.

Wellhead Equipment: 8 5/8" x 4 1/2" 2000 psi screw on independent wellhead.

Cementing:

8 5/8" surface casing - cement with 210 sx Class "B" cement with 1/4# flocele/sx and 3% calcium chloride (248 cu.ft. of slurry, 200% excess to circulate to surface). WOC 8 hrs. Test casing to 600 psi for 30 minutes.

4 1/2" production casing - Lead w/584 sx Class "B" w/3% sodium metasilicate, 1/2 pps cellophane and 7 pps gilsonite. Tail w/90 sx 50/50 Class "B" Poz w/2% gel, 1/2 pps cellophane, 7 pps gilsonite and 2% calcium chloride (1805 cu.ft. of slurry, 100% excess to circulate to surface). WOC 8 hrs. If cement does not circulate to surface, a CBL will be run during completion to determine TOC.

BOP and tests:

Surface to TD - 11" 2000 psi (minimum double gate BOP stack (Reference Figure #1 and #2). Prior to drilling out surface casing, test rams to 600 psi/30 min.

Completion - 6" 2000 psi (minimum) double gate BOP stack (Reference Figure #2). Prior to completion operations, test rams and casing to 2000 psi/15 min.

From surface to TD - choke manifold (Reference Figure #3).

Pipe rams will be actuated to least once each day and blind rams actuated once each trip to test proper functioning. An upper kelly cock valve with handle and drill string safety valves to fit each drill string will be maintained and available on the rig floor.

Additional information:

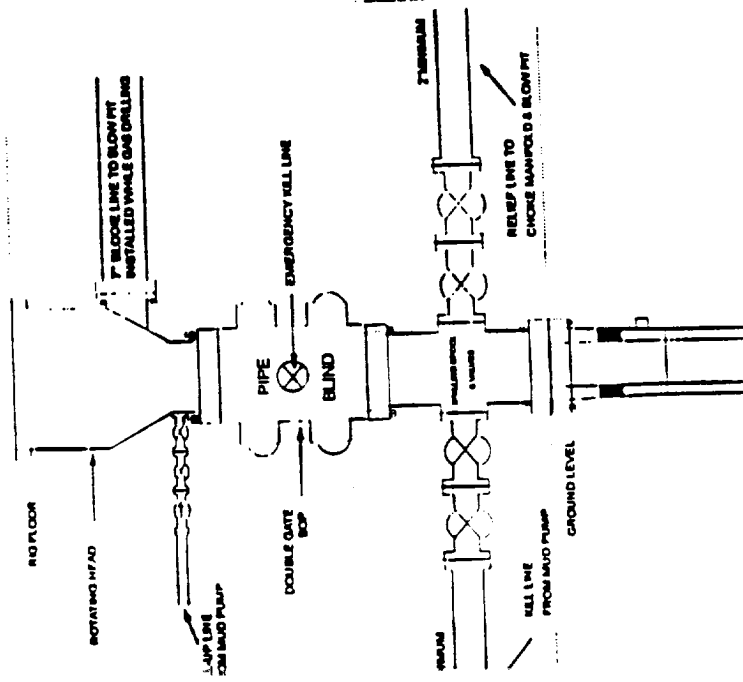
- * The Pictured Cliffs formation will be completed.
- * Anticipated pore pressure for the Pictured Cliffs is 600 psi.
- * This gas is dedicated.
- * The southeast quarter of section 8 is dedicated to the Pictured Cliffs.



Drilling Engineer

12/15/99
Date

BOP Configuration 2M psi System

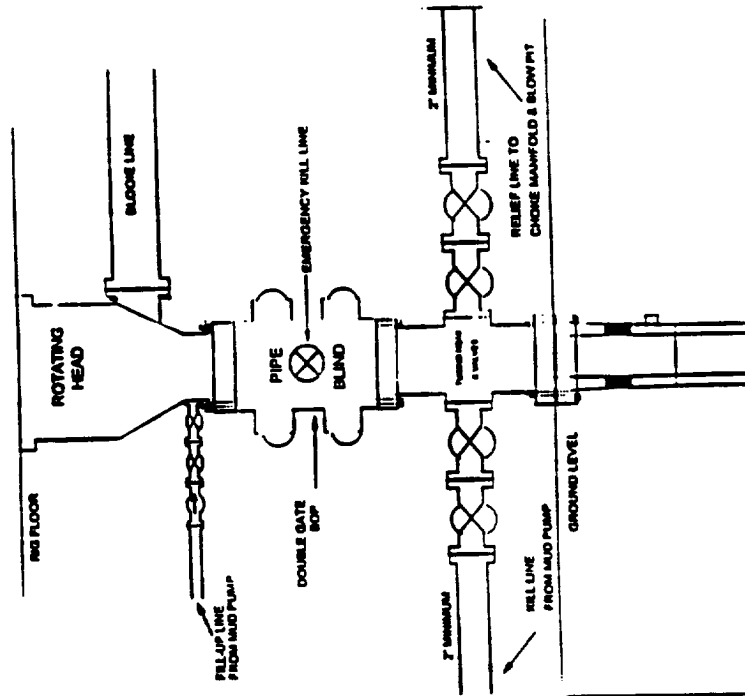


1" Bore, 2000psi minimum working pressure double gate BOP to be equipped with blind and pipe rams. A Schaffer Type 50 or equivalent rotating head to be installed on the top of the BOP. All equipment is 2000psi working pressure or better.

FIGURE #1

BURLINGTON RESOURCES

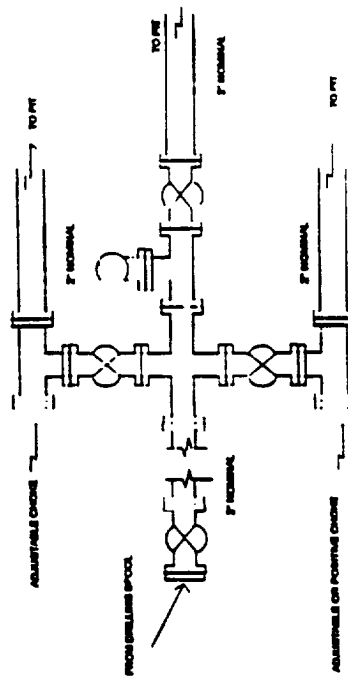
BOP Configuration 2M psi System



Minimum BOP Installation for Completion operations, 7 1/16" Bore (6" Nominal), 2,000 psi minimum working pressure double gate BOP to be equipped with blind and pipe rams

FIGURE #2

Choke Manifold Configuration 2M System



Minimum choke manifold installation from surface to Total Depth, 2" minimum, 2000psi working pressure equipment with two chokes

Figure #3

BURLINGTON RESOURCES OIL & GAS COMPANY

LEWIS PARK #2

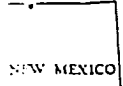
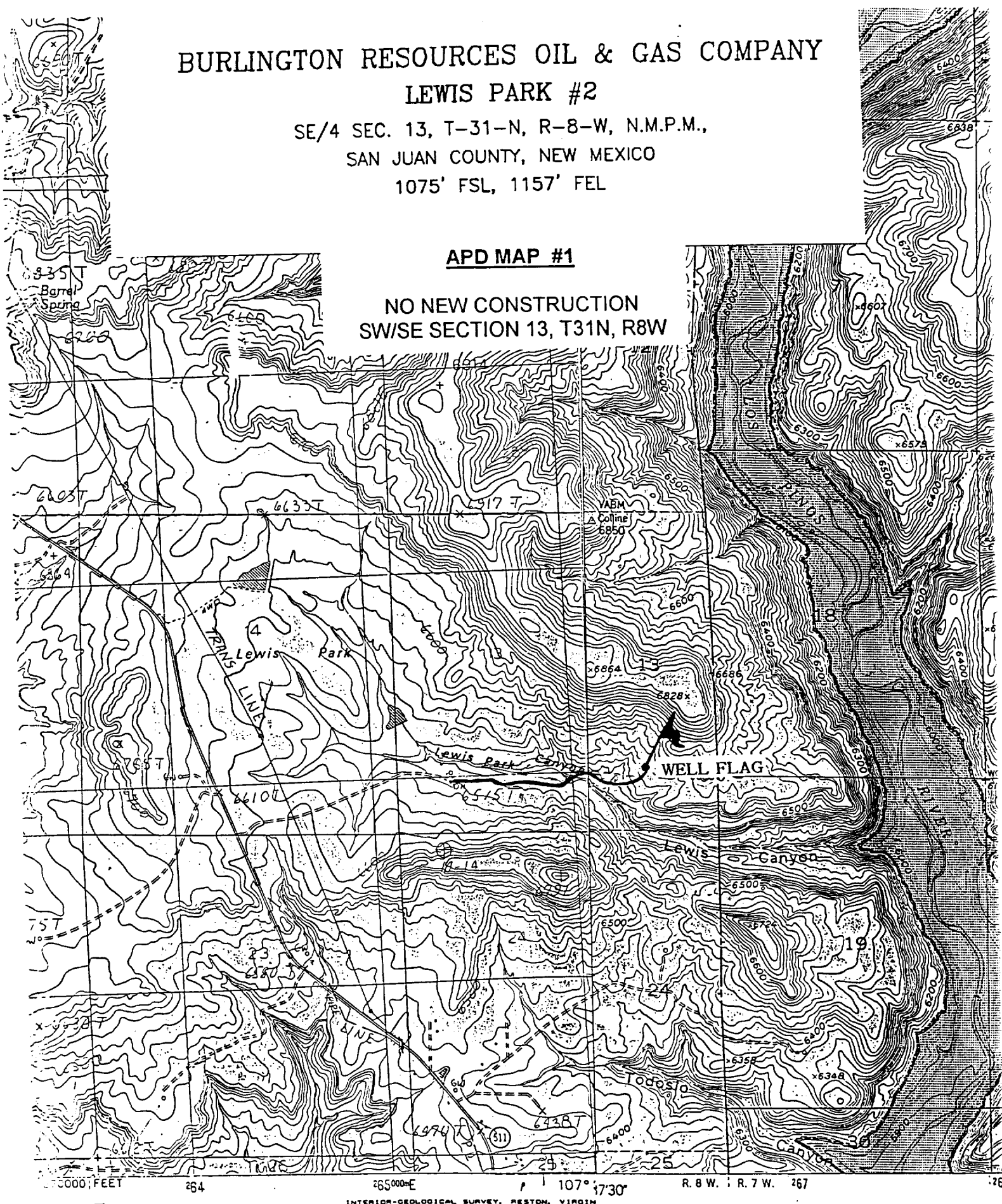
SE/4 SEC. 13, T-31-N, R-8-W, N.M.P.M.,

SAN JUAN COUNTY, NEW MEXICO

1075' FSL, 1157' FEL

APD MAP #1

NO NEW CONSTRUCTION
SW/SE SECTION 13, T31N, R8W



INTERIOR-GEOLOGICAL SURVEY, RESTON, VIRGINIA

ROAD LEGEND

Improved Road
Unimproved Road

Mapped, edited, and published by the Geological Survey
Control by USGS and USC&GS
Topography by photogrammetric methods from
aerial photographs taken 1950. Field check 1954
Polyconic projection. 1927 North American datum