

Abstract

District I
PO Box 1980, Hobbs, NM 88241-1930

District II
PO Drawer 00, Artesia, NM 88211-0719

District III
1000 Rio Brazos Rd., Aztec, NM 87410

District IV
PO Box 2088, Santa Fe, NM 87504-2088

State of New Mexico
Energy, Minerals & Natural Resources Department

OIL CONSERVATION DIVISION
PO Box 2088
Santa Fe, NM 87504-2088

Form C-102
Revised February 21, 1994
Instructions on back
Submit to Appropriate District Office
State Lease - 4 Copies
Fee Lease - 3 Copies

☐ AMENDED REPORT

WELL LOCATION AND ACREAGE DEDICATION PLAT

*API Number 30-045-30170	*Pool Code 72319	*Pool Name BLANCO MESAVERDE
*Property Code 22398	*Property Name LUDWICK LS	*Well Number 88
*OGRID No. 005073	*Operator Name CONOCO, INC.	*Elevation 5936'

¹⁰ Surface Location

UL or lot no. I	Section 31	Township 30N	Range 10W	Lot Idn	Feet from the 1850	North/South line SOUTH	Feet from the 660	East/West line EAST	County SAN JUAN
--------------------	---------------	-----------------	--------------	---------	-----------------------	---------------------------	----------------------	------------------------	--------------------

¹¹ Bottom Hole Location If Different From Surface

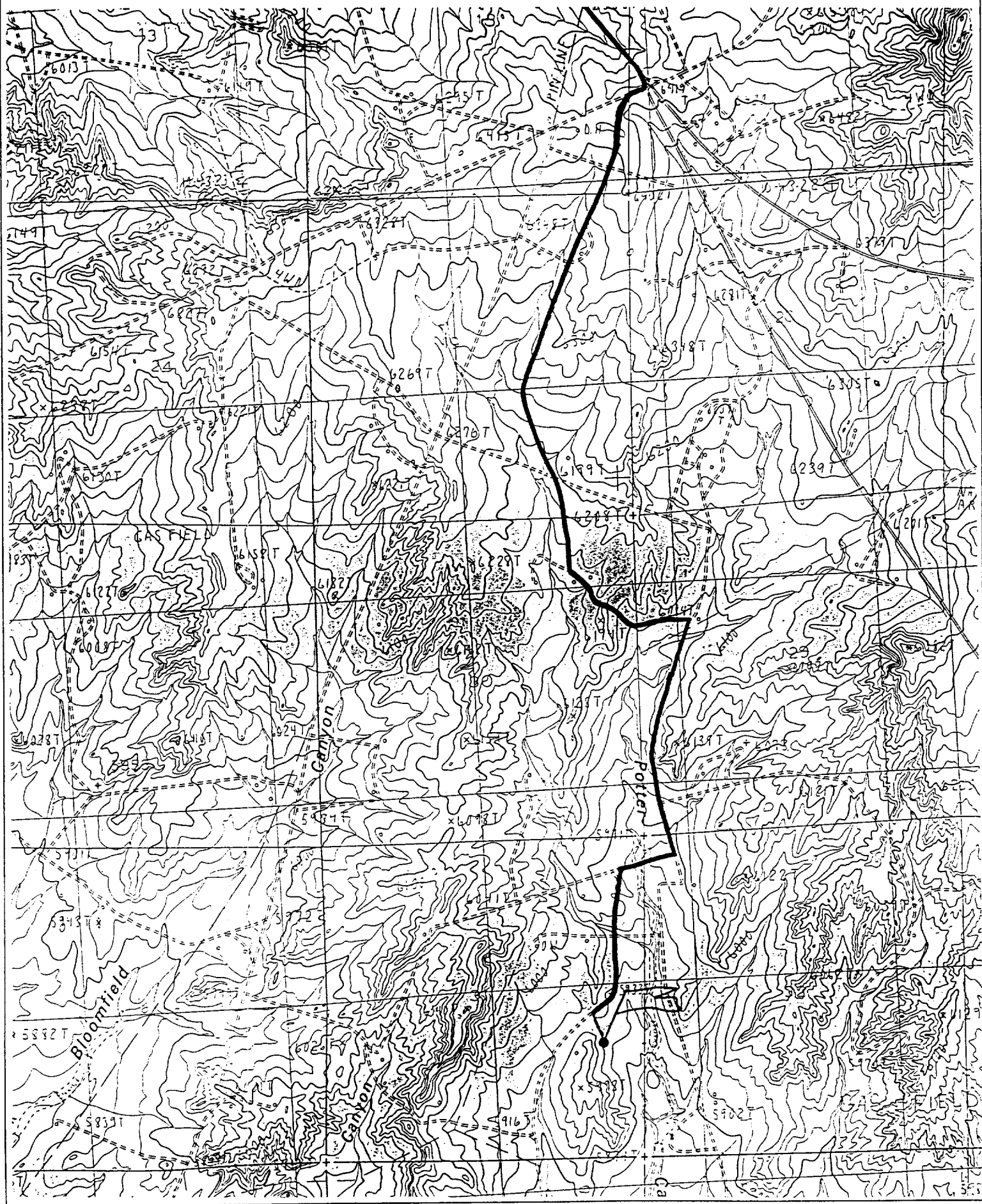
UL or lot no.	Section	Township	Range	Lot Idn	Feet from the	North/South line	Feet from the	East/West line	County	
¹² Dedicated Acres 314.52 E/2		¹³ Joint or Infill I		¹⁴ Consolidation Code		¹⁵ Order No.				

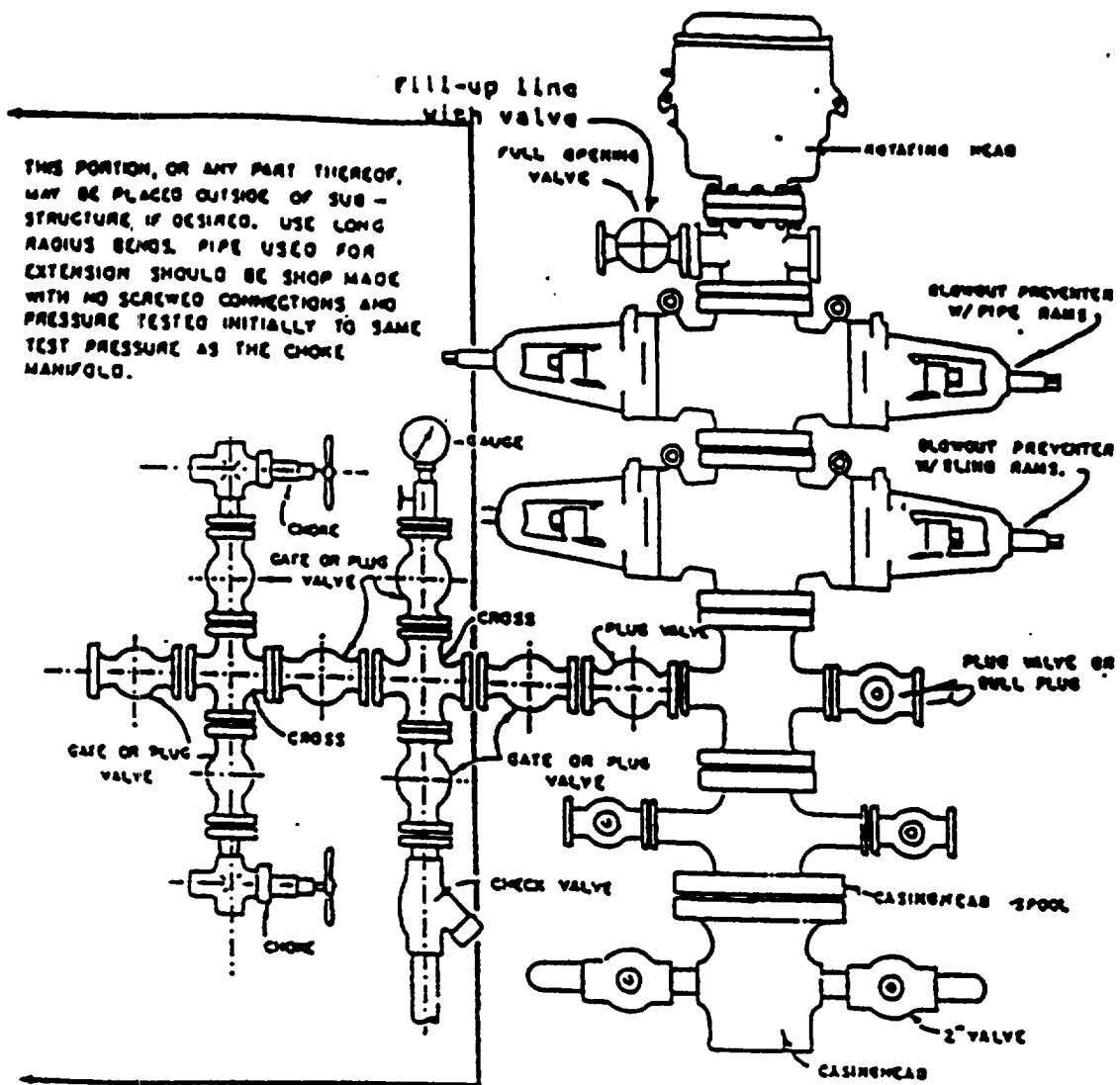
NO ALLOWABLE WILL BE ASSIGNED TO THIS COMPLETION UNTIL ALL INTERESTS HAVE BEEN CONSOLIDATED
OR A NON-STANDARD UNIT HAS BEEN APPROVED BY THE DIVISION

¹⁶ 1212.42' LOT 8 2618.22' LOT 9 LOT 10 LOT 16 2607.00' LOT 17 1156.32'	1303.50' LOT 7 LOT 15 LOT 18 1284.36'	2607.00' LOT 6 8C LOT 11 LOT 14 LOT 19 2644.62'	2607.00' LOT 5 LOT 12 LOT 13 LOT 20 5216.64'	¹⁷ OPERATOR CERTIFICATION I hereby certify that the information contained herein is true and complete to the best of my knowledge and belief. Signature Mike L. Mankin Printed Name Right-of-Way Agent Title 1-31-00 Date ¹⁸ SURVEYOR CERTIFICATION I hereby certify that the well location shown on this plat was plotted from field notes of actual surveys made by me or under my supervision, and that the same is true and correct to the best of my belief. OCTOBER 16, 1999 Date of Survey Signature and Seal NEALE C. EDWARDS NEW MEXICO 6857 REGISTERED PROFESSIONAL SURVEYOR Certificate No. 6857
--	---	---	---	---

CONOCO, INC. LUDWICK LS #8B

1850' FSL & 660' FEL, SECTION 31, T30N, R10W, N.M.P.M.
SAN JUAN COUNTY, NEW MEXICO





BLOWOUT PREVENTER HOOKUP

Drilling contractors used in the San Juan Basing supply 3000 psi equipment, but cannot provide annular preventors because of sub-structure limitations. Maximum anticipated surface pressures for this well will not exceed the working pressure of the proposed BOP system. Please see the attached BOP diagram details 2000 psi equipment according to Onshore Order No. 2 even though the equipment will test to 3000 psi. The 2000 psi system allows deletion of the annular preventor and fulfills your requirements (note diagram No. 1). In addition, the following equipment will comprise the 2000 psi system:

1. Two rams with one blind and one pipe ram.
2. Kill line (2 inch maximum).
3. One kill line valve.
4. One choke line valve.
5. Two chokes (reference diagram No. 1).
6. Upper kelly cock valve with handle.
7. Safety valve and subs to fit all drill strings in use.
8. Two-inch minimum choke line.
9. Pressure gauge on choke manifold.
10. Fill-up line above the upper most preventor.
11. Rotating head.