

UNITED STATES
DEPARTMENT OF THE INTERIOR
BUREAU OF LAND MANAGEMENT

APPLICATION FOR PERMIT TO DRILL, DEEPEN, OR PLUG BACK

1a. Type of Work Drill		5. Lease Number NM-047	
1b Type of Well Gas		6. If Indian, Name of Tribe or Allottee	
2. Operator Texakoma Oil & Gas Corporation		7. Unit Agreement Name 26048	
3. Address & Phone No. of Operator %A. R. Kendrick Box 516, Aztec, NM 87410 (505) 334-2555		8. Farm or Lease Name Texakoma Federal 7	
		9. Well Number APT # 30-045-30236 1	
4. Location of Well 1785' FNL 1675' FEL		10. Field, Pool, or Wildcat Basin Fruitland Coal	
		11. Section, Township, & Range, Meridian, or Block G-7-30N-12W	
14. Distance in Miles from Nearest Town 3.5 miles northwest from the Flora Vista Postoffice		12. County San Juan	13. State New Mexico
15. Distance from Proposed Location To Nearest Property Line or Lease Line.	849'	16. Acres in Lease 1920	17. Acres Assigned to Well N - 309.25
18. Distance From Proposed Location To Nearest Well Dr, Compl., Or Applied For On Lease.	864'	19. Proposed Depth 2400'	20. Rotary or Cable Tools Rotary
21. Elevations (DF, RT, GR, Etc.) 5990' GR		22. Approximate Date Work Will Start. Summer, 2000	

23. Proposed Casing and Cementing Program:

Exhibits attached as follows:

"A" Location and Elevation Plat
"B" Vicinity Map - Access Roads
"C" Ten-Point Compliance Program
"D" Multi-Point Requirements for APD
"E" Blowout Preventer Schematic

"F" Location Profile
"G" Drill Rig Layout
"H" Completion Rig Layout
"I" Production Facility Schematic
"J" Plat of Wells Within One Mile

24. Signed A. R. Kendrick Title _____ Agent _____ Date 5/9/00

Permit No. _____ Approval Date _____

Approved By /s/ Jim Lovato Title _____ Date JUN 8 2000

NOTE: THIS FORMAT IS ISSUED IN LIEU OF U.S. BLM FORM 3160-3.

[Handwritten signature]

State of New Mexico
Energy, Minerals & Mining Resources Department

Form C - 102

OIL CONSERVATION DIVISION

2040 South Pacheco
Santa Fe, NM 87505

☐ AMENDED REPORT

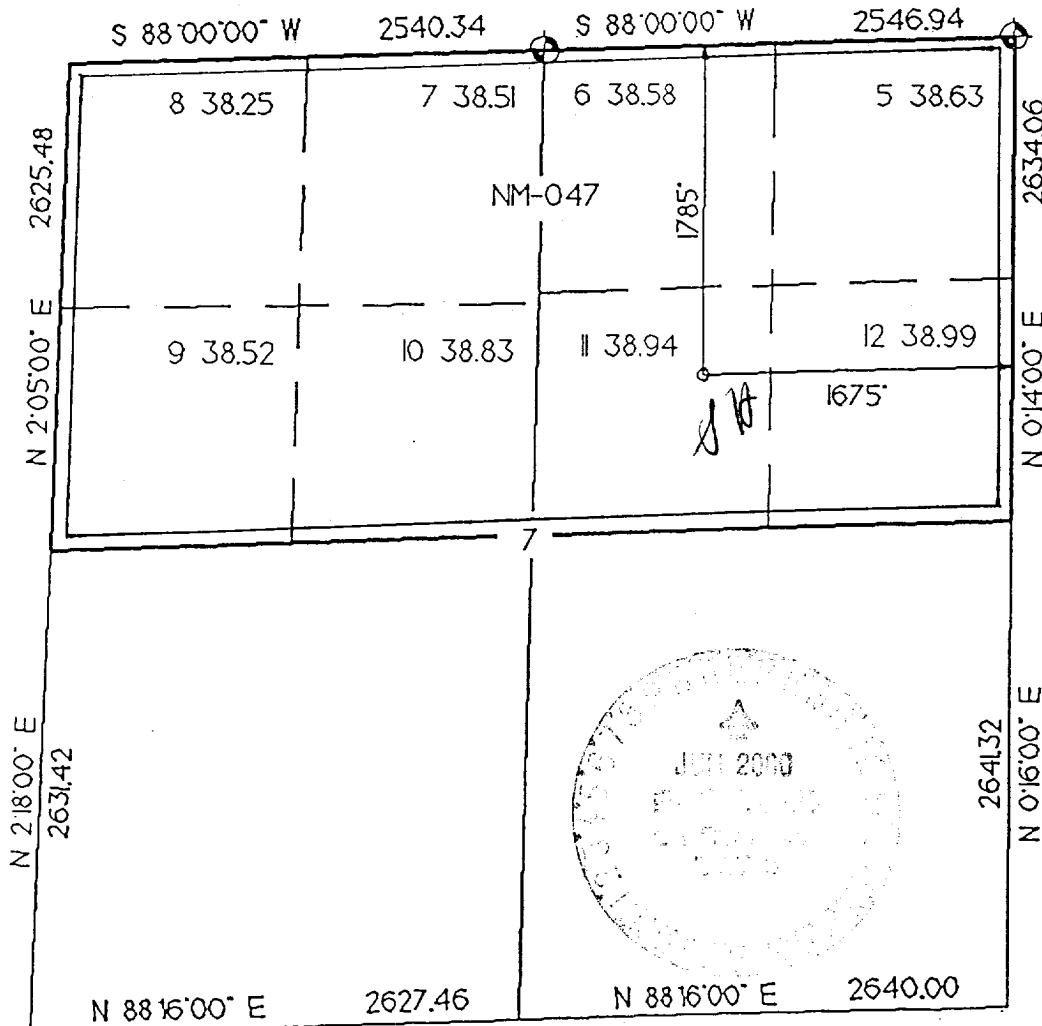
WELL LOCATION AND ACREAGE DEDICATION PLAT

API Number 30-045- <u>30236</u>	Pool Code 71629	Pool Name BASIN FRUITLAND COAL
Property Code <u>26048</u>	Property Name TEXAKOMA FEDERAL 7	Well Number 1
OGRID No. 22521	Operator Name TEXAKOMA OIL & GAS CORPORATION	Elevation 5990'

Surface Location									
UL or Lot G	Sec. 7	Twp. 30 N.	Rge. 12 W.	Lot Lk. II	Feet from > 1785	North/South NORTH	Feet from > 1675	East/West EAST	County SAN JUAN

Bottom Hole Location if Different From Surface									
UL or Lot	Sec.	Twp.	Rge.	Lot Lk.	Feet from >	North/South	Feet from >	East/West	County
Dedication N-309.25	Joint ? N	Consolidation	Order No.						

NO ALLOWABLE WELL ASSIGNED TO THIS COMPLETION UNTIL ALL INTERESTS HAVE BEEN CONSOLIDATED
OR A NON-STANDARD UNIT HAS BEEN APPROVED BY THE DIVISION



OPERATOR CERTIFICATION
I hereby certify that the information contained herein is true and complete to the best of my knowledge and belief.

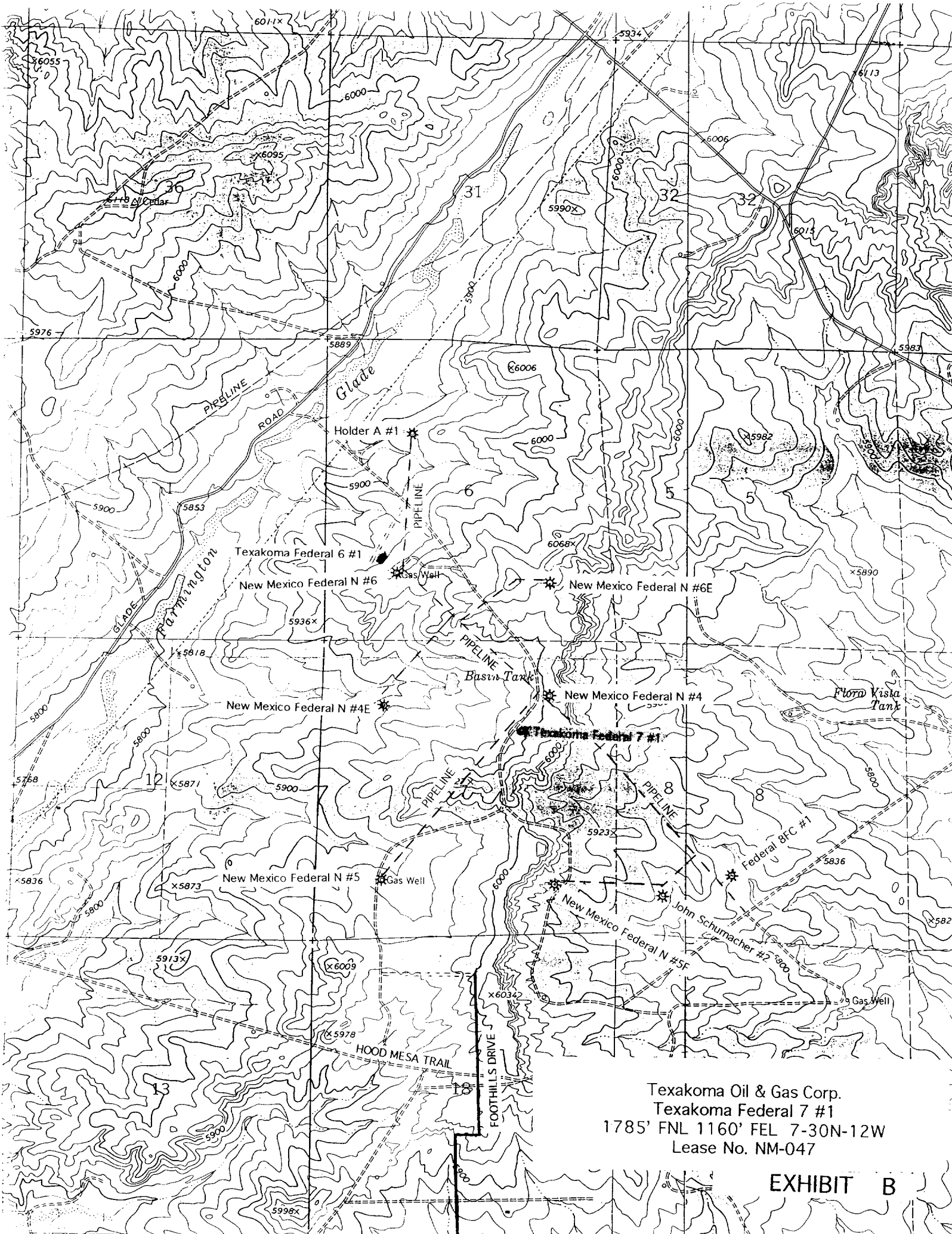
Signature
A. R. Kendrick
Printed Name
A. R. KENDRICK
Title
Agent
Date
5/9/00

SURVEYOR CERTIFICATION

I hereby certify that the well location on this plat was plotted from field notes of actual surveys made by me or under my supervision, and that the same is true and correct to the best of my belief.
Date of Survey

Signature
G. Huddleston
Professional Seal
G. H. Huddleston
6844
REGISTERED LAND SURVEYOR

EXHIBIT A



Texakoma Oil & Gas Corp.
Texakoma Federal 7 #1
1785' FNL 1160' FEL 7-30N-12W
Lease No. NM-047

EXHIBIT B

TEN-POINT PROGRAM
Texakoma Oil & Gas Corporation
Texakoma Federal 7 #1
1785' FNL 1675' FEL 7-30N-12W
San Juan County, New Mexico
Lease No. NM-047

1. THE GEOLOGICAL SURFACE FORMATION IS: Nacimiento.
2. THE TOPS OF IMPORTANT GEOLOGICAL MARKERS: (BASED ON EXISTING LOG INFORMATION)

Ojo Alamo	370'
Fruitland Sand	2025'
Fruitland Coal	2175'
Pictured Cliffs	2200'
Total Depth	2400'

3. ESTIMATED DEPTHS OF ANTICIPATED WATER, OIL, GAS OR MINERALS:

<u>SUBSTANCE</u>	<u>FORMATION</u>	<u>ANTICIPATED DEPTH</u>
Gas	Fruitland Sand	2025'
Gas	Fruitland Coal	2175'
Gas	Pictured Cliffs	2200'

4. THE CASING PROGRAM:

<u>DEPTH</u>	<u>HOLE SIZE</u>	<u>O.D.</u>	<u>WEIGHT</u>	<u>GRADE</u>	<u>TYPE</u>	<u>NEW/USED</u>
0-120'	12-1/4"	8-5/8"	24	ST&C	J-55	NEW
0-2400' ✓	7-7/8"	5-1/2"	15.5	ST&C	J-55	NEW

PROPOSED CEMENT PROGRAM: To effectively isolate and seal off all water, oil gas and coal-bearing strata encountered by the utilization of spacers, centralizers and swirling centralizers at the base of the Ojo Alamo formation as specified by NTL-FRA 90-1 III.B and API standards; and by using cement volumes as follows: (exact volumes to be determined from logs.)

SURFACE: 118 Cu Ft (100 Sx) Class B w/0.25# Flocele/Sx plus 2% CaCl.

PRODUCTION: 420 Cu Ft (210 Sx Light standard cement w/2% CaCl + 0.25 pps Flocele mixed to 11.8 ppg followed by 130 Cu Ft (110 Sx) Standard w/0.6% Halad-322 mixed to 15.6 ppg w/caliper plus 25% excess in both slurries. Grand Totals: 552 Cu Ft (320 Sx).

5. OPERATOR'S MINIMUM SPECIFICATIONS FOR PRESSURE CONTROL:

Exhibit E is a schematic of the blowout preventer used by a local contractor for other wells in the area. The BOP is to be test-operated before drilling out the cement plug in the top of the intermediate casing, and operation checks will be made daily thereafter and recorded in the Daily Report. Accessories to BOP will include floor safety valve and choke manifold with pressure rating equivalent to the BOP stack.

"2M" BLOWOUT PREVENTER SYSTEM

