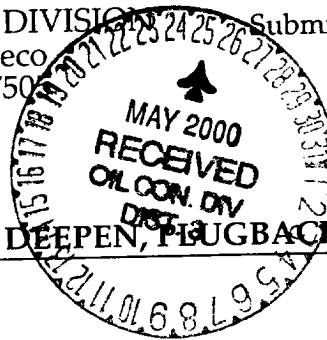


State of New Mexico
Energy, Minerals & Natural Resources Department

Form C-101
Revised October 18, 199
Instructions on back
Submit to Appropriate District Office
State Lease - 6 Copies
Fee Lease - 5 Copies

District I
PO Box 1980, Hobbs, NM 88241-1980
District II
811 S. 1st Street, Artesia, NM 88210-2834
District III
1000 Rio Brazos Rd., Aztec, NM 87410
District IV
2040 South Pacheco, Santa Fe, NM 87505

OIL CONSERVATION DIVISION
2040 South Pacheco
Santa Fe, NM 87505



AMENDED REPORT

APPLICATION FOR PERMIT TO DRILL, RE-ENTER, DEEPEN, PLUGBACK, OR ADD A ZONE

1 Operator name and Address Cross Timbers Operating Company 2700 Farmington Ave., Bldg. K. Ste 1 Farmington, NM 87401		2 OGRID Number 167067
3 API Number 30-045-30254		4 Well No. #2
4 Property Code 22597	5 Property Name Bruington Gas Com C	

7 Surface Location

UL or lot no.	Section	Township	Range	Lot. Idn	Feet from the	North/South Line	Feet from the	East/West line	County
B	21	30N	11W		660'	North	1,835'	East	San Juan

8 Proposed Bottom Hole Location If Different From Surface

UL or lot no.	Section	Township	Range	Lot. Idn	Feet from the	North/South Line	Feet from the	East/West line	County

9 Proposed Pool 1

Basin Fruitland Coal

10 Proposed Pool 2

11 Work Type Code N	12 Well Type Code G	13 Cable/Rotary R	14 Lease Type Code P	15 Ground Level Elevation 5785' -
16 Multiple N	17 Proposed Depth 2325'	18 Formation Pictured Cliffs	19 Contractor Wayne Smith Drlg	20 Spud Date Before 7/00

21 Proposed Casing and Cement Program

Hole Size	Casing Size	Casing weight/foot	Setting Depth	Sacks of Cement	Estimated TOC
8-3/4"	7"	20#, J-55, STC	200'	100	Surface
6-1/4"	4-1/2"	10.5#, J-55, STC	2,325' -	225	Surface

22 Describe the proposed program. If this application is to DEEPEN or PLUG BACK give the data on the present productive zone and proposed new productive zone. Describe the blowout prevention program, if any. Use additional sheets if necessary

Surface Casing Cement Program. Approx 100 sx class "B" cmt w/2% CaCl₂ & 1/4#/sx celloflake (15.6 ppg, 1.18 cu ft). Circ cmt to surface.
Production Casing Cement Program. Approx 200 sx Premium Lite HS (65% cmt, 35% poz, 6% gel, 10#/sx CSE) w/2% CaCl₂ & 1/4#/sx celloflake (12.5 ppg, 2.07 cuft). Exact cmt volume will be calculated from open hole caliper log plus 30%.

See enclosed diagram for BOP program.

23 I hereby certify that the information given above is true and complete to the best of my knowledge and belief.

Signature:

Printed name: Jeffrey W Patton

Title: Drilling Engineer

OIL CONSERVATION DIVISION

Approved by:

Title: DEPUTY OIL & GAS INSPECTOR, DIST. 13

Approval Date: 5-26-00

Expiration Date: MAY 26 2001

ctf

District I
PO Box 1980, Hobbs, NM 88241-1980

District II
PO Drawer 00, Artesia, NM 88211-0719

District III
1000 Rio Brazos Rd., Aztec, NM 87410

District IV
PO Box 2088, Santa Fe, NM 87504-2088

State of New Mexico
Energy, Minerals & Natural Resources Department

OIL CONSERVATION DIVISION
PO Box 2088
Santa Fe, NM 87504-2088

Form C-102
Revised February 21, 1994
Instructions on back
Submit to Appropriate District Office
State Lease - 4 Copies
Fee Lease - 3 Copies

☐ AMENDED REPORT

WELL LOCATION AND ACREAGE DEDICATION PLAT

*API Number 30-045-30254	*Pool Code 71629	*Pool Name BASIN FRUITLAND COAL
*Property Code 22597	*Property Name BRUINGTON GAS COM C	*Well Number 2
*OGRID No. 167067	*Operator Name CROSS TIMBERS OPERATING COMPANY	*Elevation 5785' ✓

¹⁰ Surface Location

UL or lot no.	Section	Township	Range	Lot Idn	Feet from the	North/South line	Feet from the	East/West line	County
B	21	30N	11W		660	NORTH	1835	EAST	SAN JUAN

¹¹ Bottom Hole Location If Different From Surface

UL or lot no.	Section	Township	Range	Lot Idn	Feet from the	North/South line	Feet from the	East/West line	County

¹² Dedicated Acres 37.85 320 1/2	¹³ Joint or Infill	¹⁴ Consolidation Code	¹⁵ Order No.
---	-------------------------------	----------------------------------	-------------------------

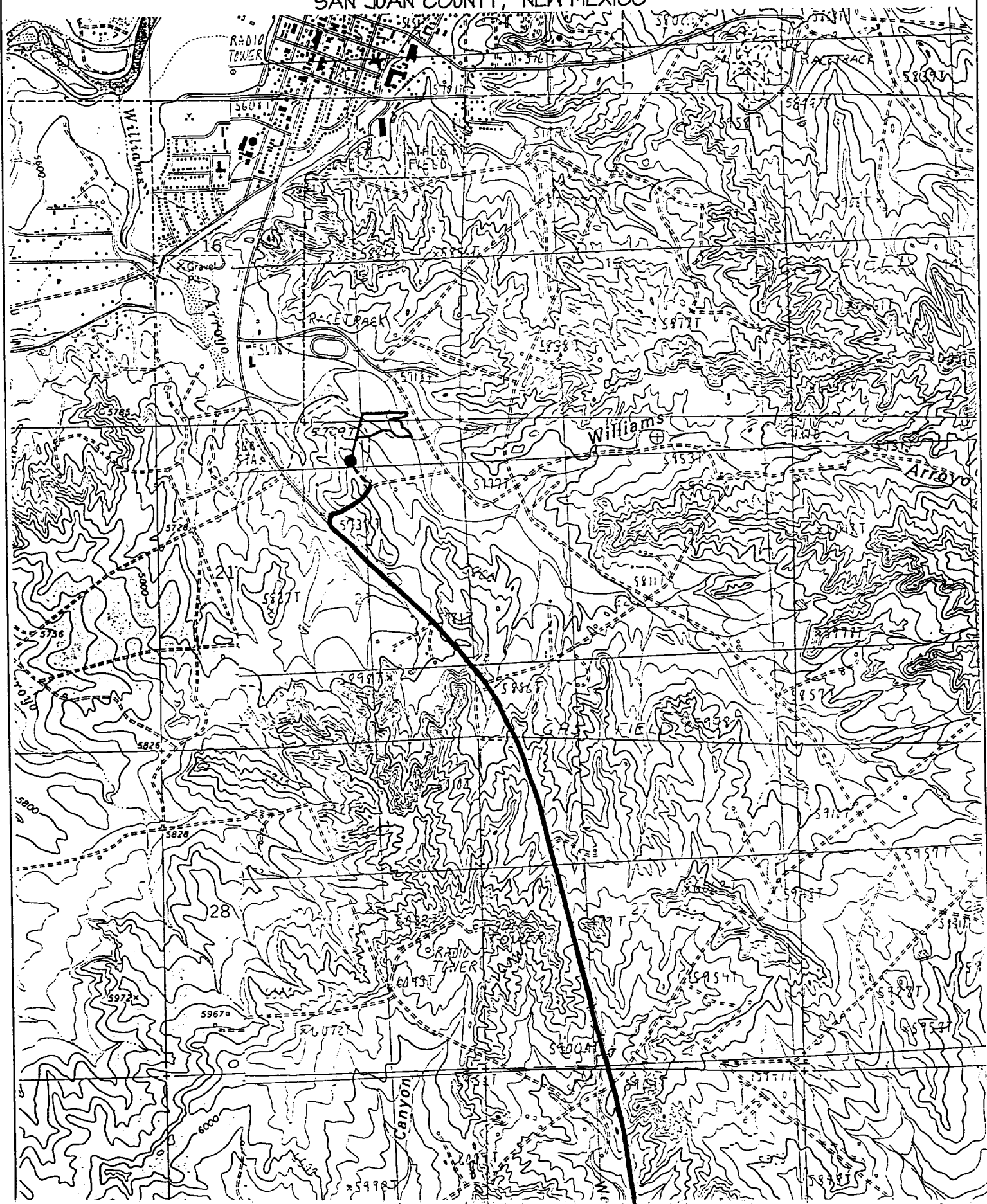
NO ALLOWABLE WILL BE ASSIGNED TO THIS COMPLETION UNTIL ALL INTERESTS HAVE BEEN CONSOLIDATED
OR A NON-STANDARD UNIT HAS BEEN APPROVED BY THE DIVISION

<p>¹⁶</p> <p>21</p> <p>LOT 1 LOT 2</p>	<p>¹⁷ OPERATOR CERTIFICATION</p> <p>I hereby certify that the information contained herein is true and complete to the best of my knowledge and belief.</p> <p><i>Ray Martin</i></p> <p>Signature Ray Martin</p> <p>Printed Name Production Engineer</p> <p>Title</p> <p>Date</p>
	<p>¹⁸ SURVEYOR CERTIFICATION</p> <p>I hereby certify that the well location shown on this plat was plotted from field notes of actual surveys made by me or under my supervision, and that the same is true and correct to the best of my belief.</p> <p>MARCH 21, 2000</p> <p>Date of Survey</p> <p>Signature and Seal of Professional Surveyor</p> <p>Certificate Number 6857</p>

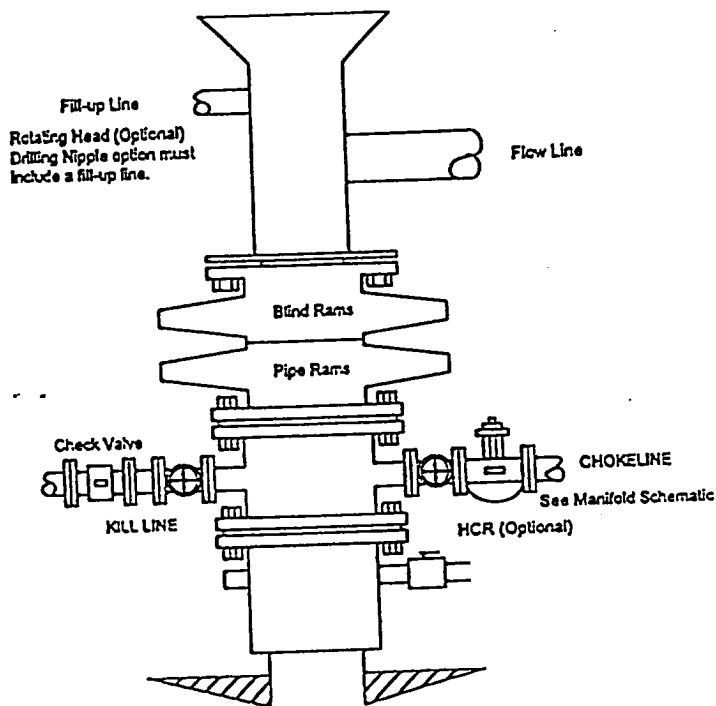
CROSS TIMBERS OF LATERAL COMPANY BRUING ON GAS COM C #2

660' FNL & 1835' FEL, SECTION 21, T30N, R11W, N.M.P.M.

SAN JUAN COUNTY, NEW MEXICO



BOPE SCHEMATIC FOR DRILLING OPERATIONS
CLASS 1 - NORMAL PRESSURE
CROSS TIMBERS OPERATING COMPANY STANDARD



CHOKE MANIFOLD SCHEMATIC FOR DRILLING OPERATIONS
2M SERVICE
CROSS TIMBERS OPERATING COMPANY STANDARD

