

District I
PO Box 1980, Hobbs, NM 88241-1980
District II
811 S. 1st Street, Artesia, NM 88210-2834
District III
1000 Rio Brazos Rd., Aztec, NM 87410
District IV
2040 South Pacheco, Santa Fe, NM 87505

State of New Mexico
Energy, Minerals & Natural Resources Department

OIL CONSERVATION DIVISION
2040 South Pacheco
Santa Fe, NM 87505

Form C-101
Revised October 18, 199
Instructions on bac
Submit to Appropriate District O
State Lease - 6 Copie
Fee Lease - 5 Copie

☐ AMENDED REPORT

APPLICATION FOR PERMIT TO DRILL, RE-ENTER, DEEPEN, PLUGBACK, OR ADD A ZONE

¹ Operator name and Address Cross Timbers Operating Company 2700 Farmington Ave., Bldg. K. Ste 1 Farmington, NM 87401		² OGRID Number 167067
⁴ Property Code 26050	⁵ Property Name Aztec Com 4	³ API Number 30-0 45-30272
		⁶ Well No. #1

⁷ Surface Location									
UL or lot no.	Section	Township	Range	Lot. Idn	Feet from the	North/South Line	Feet from the	East/West line	County
F	16	30N	11W		2,370	North	2,045	West	San Juan

⁸ Proposed Bottom Hole Location If Different From Surface									
UL or lot no.	Section	Township	Range	Lot. Idn	Feet from the	North/South Line	Feet from the	East/West line	County
⁹ Proposed Pool 1 Basin Dakota					¹⁰ Proposed Pool 2 Blanco Mesaverde				

¹¹ Work Type Code N	¹² Well Type Code G	¹³ Cable/Rotary R	¹⁴ Lease Type Code P	¹⁵ Ground Level Elevation 5,691' Ground Level
¹⁶ Multiple Yes	¹⁷ Proposed Depth 6,900'	¹⁸ Formation Dakota	¹⁹ Contractor Not yet awarded	²⁰ Spud Date Summer, 2000

²¹ Proposed Casing and Cement Program					
Hole Size	Casing Size	Casing weight/foot	Setting Depth	Sacks of Cement	Estimated TOC
12-1/4"	8-5/8"	24.0 #/ft	400'	180 sx	Surface
7-7/8"	4-1/2"	10.5 #/ft	9,600 6900	1,175 sx	Surface

²² Describe the proposed program. If this application is to DEEPEN or PLUG BACK give the data on the present productive zone and proposed new productive zone. Describe the blowout prevention program, if any. Use additional sheets if necessary.

Dr1 to 400' Run new 8-5/8" csg. Cmt csg w/280 sx cl "B" cmt (15.6 ppg, 1.18 cuft/sx) w/2% CaCl & 1/4# Celloflake. Attempt to circ cmt to surface. NU BOP. Test BOP. Mix mud. Drill ahead w/7-7/8 hole.

Dr1 to TD (@ 6,900'). Log well. Run new 4-1/2" csg to btm. Cmt csg with approx 1,025 sx Premium Lite cmt (65% cmt, 35% Poz, 6% gel) w/1/4# celloflake @ 12.5 ppg, 2.07 cuft/sx followed by 150 sx cl "H" cmt (neat) @ 15.6 ppg, 1.18 cuft/sx. Attempt to circ cmt to surface.

See enclosed drawing for BOP stack configuration.

²³ I hereby certify that the information given above is true and complete to the best of my knowledge and belief.	OIL CONSERVATION DIVISION
Signature: <i>Jeffrey W. Patton</i> 6/8/00	Approved by: <i>[Signature]</i>
Printed name: <i>JEFFREY W. PATTON</i>	Title: <i>DEPUTY OIL & GAS INSPECTOR, DIST. III</i>
Title: Drilling Engineer	Approval Date: <i>JUN - 9 2000</i> Expiration Date: <i>[Blank]</i>

HOLD C104 FOR NSL MV + DK

District I
PO Box 1980, Hobbs, NM 88241-1980

State of New Mexico
Energy, Minerals & Natural Resources Dep

Form C-102

Revised February 21, 1994

District II
PO Drawer DD, Artesia, NM 88211-0719

OIL CONSERVATION DIVISION
PO Box 2088
Santa Fe, NM 87504-2088

Submit to Appropriate District Office
State Lease - 4 Copies
Fee Lease - 3 Copies

District III
1000 Rio Brazos Rd., Aztec, NM 87410

District IV
PO Box 2088, Santa Fe, NM 87504-2088

☐ AMENDED REPORT

WELL LOCATION AND ACREAGE DEDICATION PLAT

*API Number 30045-30272	*Pool Code 71599/72319	*Pool Name BASIN DAKOTA/Blanco MV
*Property Code 26050	*Property Name AZTEC COM 4	*Well Number 1
*GRID No. 167067	*Operator Name CROSS TIMBERS OPERATING COMPANY	*Elevation 5691'

10 Surface Location

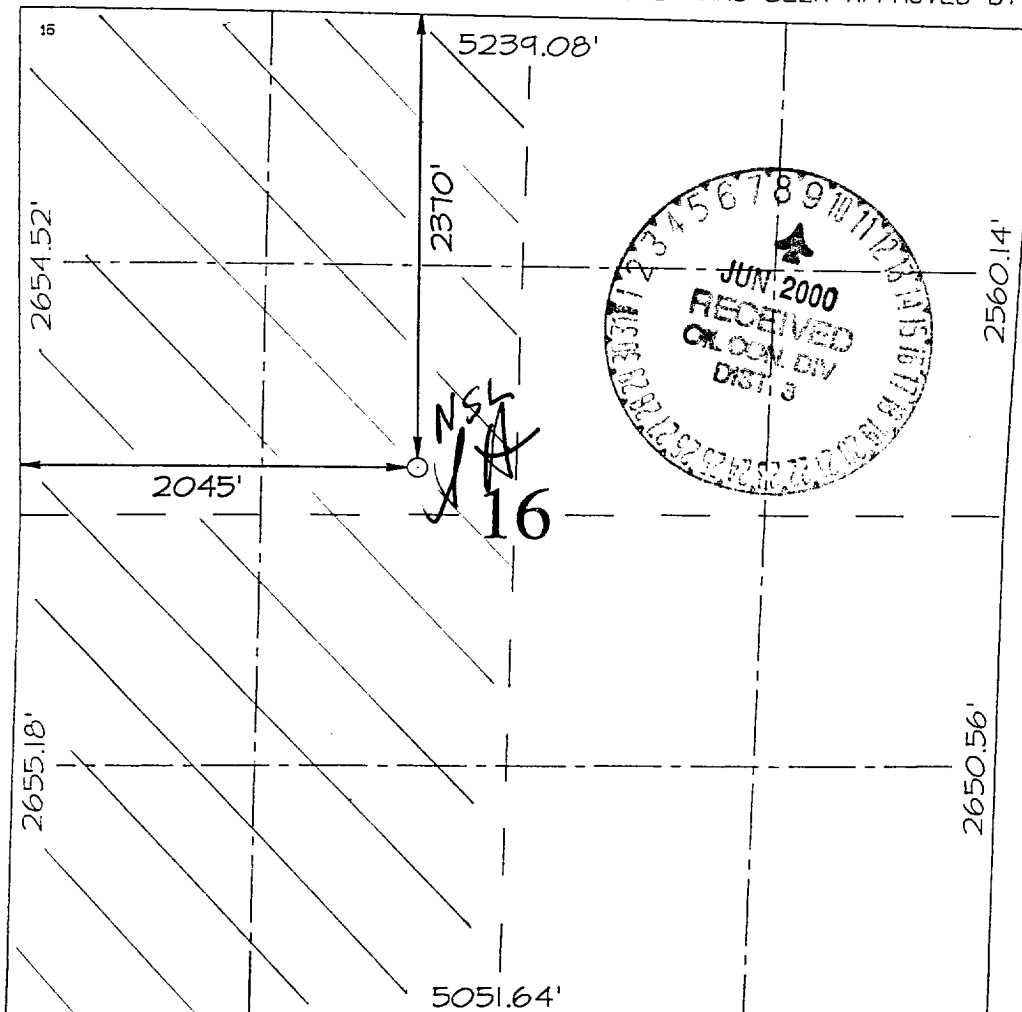
UL or lot no. F	Section 16	Township 30N	Range 11W	Lot Idn	Feet from the 2370	North/South line NORTH	Feet from the 2045	East/West line WEST	County SAN JUAN
--------------------	---------------	-----------------	--------------	---------	-----------------------	---------------------------	-----------------------	------------------------	--------------------

11 Bottom Hole Location If Different From Surface

UL or lot no.	Section	Township	Range	Lot Idn	Feet from the	North/South line	Feet from the	East/West line	County
---------------	---------	----------	-------	---------	---------------	------------------	---------------	----------------	--------

12 Dedicated Acres w/ 320	13 Joint or Infill	14 Consolidation Code	15 Order No.
------------------------------	--------------------	-----------------------	--------------

NO ALLOWABLE WILL BE ASSIGNED TO THIS COMPLETION UNTIL ALL INTERESTS HAVE BEEN CONSOLIDATED
OR A NON-STANDARD UNIT HAS BEEN APPROVED BY THE DIVISION



17 OPERATOR CERTIFICATION

I hereby certify that the information contained herein is true and complete to the best of my knowledge and belief.

Signature
Jeff Patton
Printed Name
Production Engineer
Title
6/6/00
Date

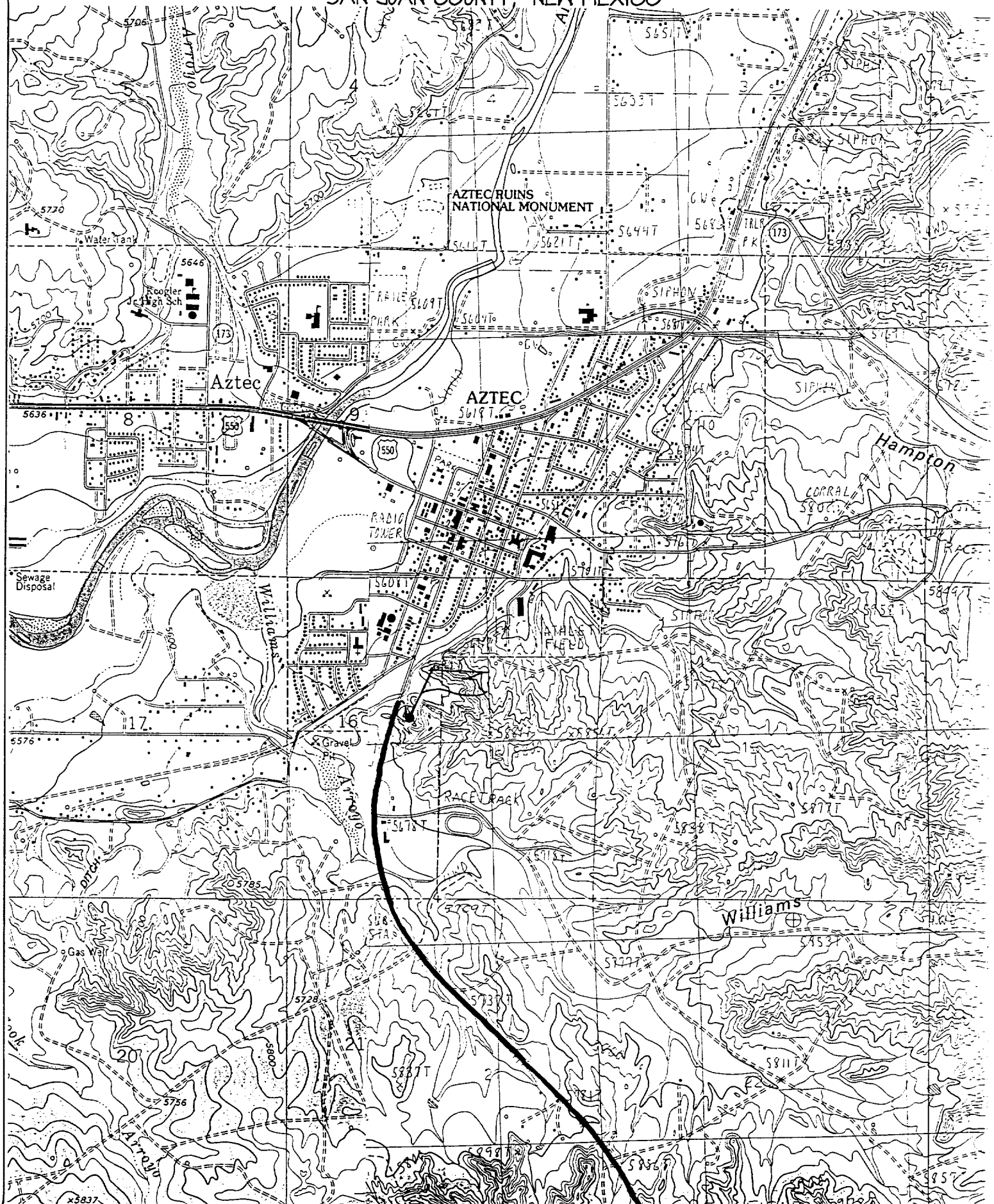
18 SURVEYOR CERTIFICATION

I hereby certify that the well location shown on this plat was plotted from field notes of actual surveys made by me or under my supervision, and that the same is true and correct to the best of my belief.

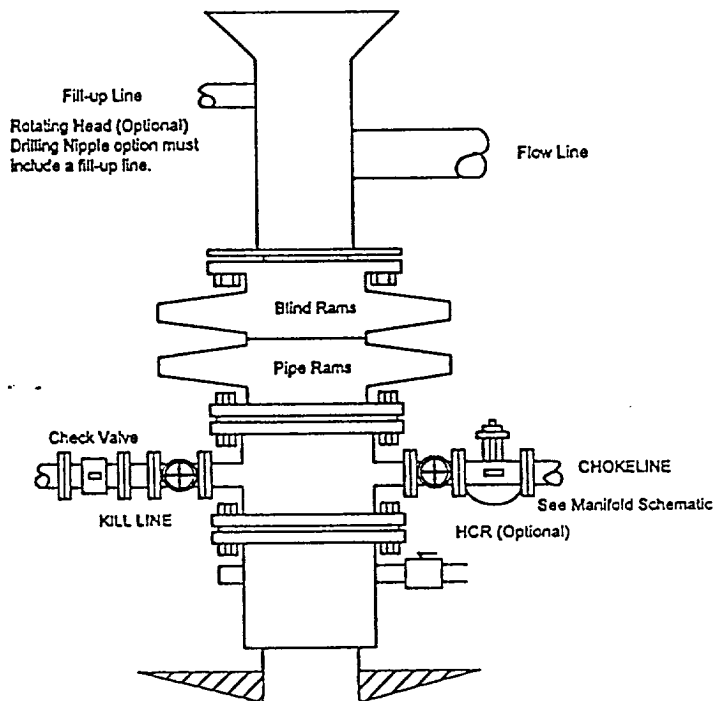
MAY 24, 2000
Date of Survey
Signature and Seal of NEALE C. EDWARDS
6857
Certificate Number 6857

CROSS TIME . 3 OPERATING COMPANY . LITEC COM 4 #1

2370' FNL & 2045' FWL, SECTION 16, T30N, R11W, N.M.P.M.
SAN JUAN COUNTY, NEW MEXICO



BOPE SCHEMATIC FOR DRILLING OPERATIONS
 CLASS 1 - NORMAL PRESSURE
 CROSS TIMBERS OPERATING COMPANY STANDARD



CHOKE MANIFOLD SCHEMATIC FOR DRILLING OPERATIONS
 2M SERVICE
 CROSS TIMBERS OPERATING COMPANY STANDARD

