

District I
 PO Box 1980, Hobbs, NM 88241-1980
 District II
 811 S. 1st Street, Artesia, NM 88210-2834
 District III
 1000 Rio Brazos Rd., Aztec, NM 87410
 District IV
 2040 South Pacheco, Santa Fe, NM 87505

State of New Mexico
 Energy, Minerals & Natural Resources Department

OIL CONSERVATION DIVISION
 2040 South Pacheco
 Santa Fe, NM 87505

Form C-101
 Revised October 18, 199
 Instructions on bac
 Submit to Appropriate District O
 State Lease - 6 Copie
 Fee Lease - 5 Copie

AMENDED REPORT

APPLICATION FOR PERMIT TO DRILL, RE-ENTER, DEEPEN, PLUGBACK, OR ADD A ZONE

¹ Operator name and Address Cross Timbers Operating Company 2700 Farmington Ave., Bldg. K. Ste 1 Farmington, NM 87401		² OGRID Number 167067
⁴ Property Code 26050	⁵ Property Name Aztec Com 4	³ API Number 30-0 45-302-93
		⁶ Well No. #1E

⁷ Surface Location

UL or lot no.	Section	Township	Range	Lot. Idn	Feet from the	North/South Line	Feet from the	East/West line	County
M	16	30N	11W		1,130	South	715	West	San Juan

⁸ Proposed Bottom Hole Location If Different From Surface

UL or lot no.	Section	Township	Range	Lot. Idn	Feet from the	North/South Line	Feet from the	East/West line	County
⁹ Proposed Pool 1 Basin Dakota					¹⁰ Proposed Pool 2 Blanco Mesaverde				

¹¹ Work Type Code N	¹² Well Type Code G	¹³ Cable/Rotary R	¹⁴ Lease Type Code P	¹⁵ Ground Level Elevation 5,666' Ground Level
¹⁶ Multiple Yes	¹⁷ Proposed Depth 6,900'	¹⁸ Formation Dakota	¹⁹ Contractor Not yet awarded	²⁰ Spud Date Summer, 2000

²¹ Proposed Casing and Cement Program

Hole Size	Casing Size	Casing weight/foot	Setting Depth	Sacks of Cement	Estimated TOC
12-1/4"	8-5/8"	24.0 #/ft	400'	180 sx	Surface
7-7/8"	4-1/2"	10.5 #/ft	9,600 6900	1,175 sx	Surface

²² Describe the proposed program. If this application is to DEEPEN or PLUG BACK give the data on the present productive zone and proposed new productive zone. Describe the blowout prevention program, if any. Use additional sheets if necessary

Dr1 to 400' Run new 8-5/8" csg. Cmt csg w/280 sx cl "B" cmt (15.6 ppg, 1.18 cuft/sx) w/2% CaCl & 1/4# Celloflake. Attempt to circ cmt to surface. NU BOP. Test BOP. Mix mud. Drill ahead w/7-7/8 hole.

Dr1 to TD (@ 6,900'). Log well. Run new 4-1/2" csg to btm. Cmt csg with approx 1,025 sx Premium Lite cmt (65% cmt, 35% Poz, 6% gel) w/1/4# celloflake @ 12.5 ppg, 2.07 cuft/sx followed by 150 sx cl "H" cmt (neat) @ 15.6 ppg, 1.18 cuft/sx. Attempt to circ cmt to surface.

See enclosed drawing for BOP stack configuration.

²³ I hereby certify that the information given above is true and complete to the best of my knowledge and belief.

Signature: *J.P. Patton 6/8/00*
 Printed name: *JERRY W PATTON*

Title: Drilling Engineer

OIL CONSERVATION DIVISION	
Approved by:	<i>[Signature]</i>
Title:	DEPUTY OIL & GAS INSPECTOR, DIST. #
Approval Date:	JUN - 9 2000
Expiration Date:	JUN - 9 2000

District I
PO Box 1980, Hobbs, NM 88241-1980

State of New Mexico
Energy, Minerals & Natural Resources Department

Form C-102
Revised February 21, 1994

District II
PO Drawer DD, Artesia, NM 88211-0719

OIL CONSERVATION DIVISION
PO Box 2088
Santa Fe, NM 87504-2088

Instructions on back
Submit to Appropriate District Office
State Lease - 4 Copies
Fee Lease - 3 Copies

District III
1000 Rio Brazos Rd., Aztec, NM 87410

AMENDED REPORT

District IV
PO Box 2088, Santa Fe, NM 87504-2088

WELL LOCATION AND ACREAGE DEDICATION PLAT

¹ API Number 30 045 30273		² Pool Code 71599/72319		³ Pool Name BASIN DAKOTA / Blanco MV	
⁴ Property Code 26050		⁵ Property Name AZTEC COM 4			⁶ Well Number 1E
⁷ GRID No. 167067		⁸ Operator Name CROSS TIMBERS OPERATING COMPANY			⁹ Elevation 5666'

¹⁰ Surface Location

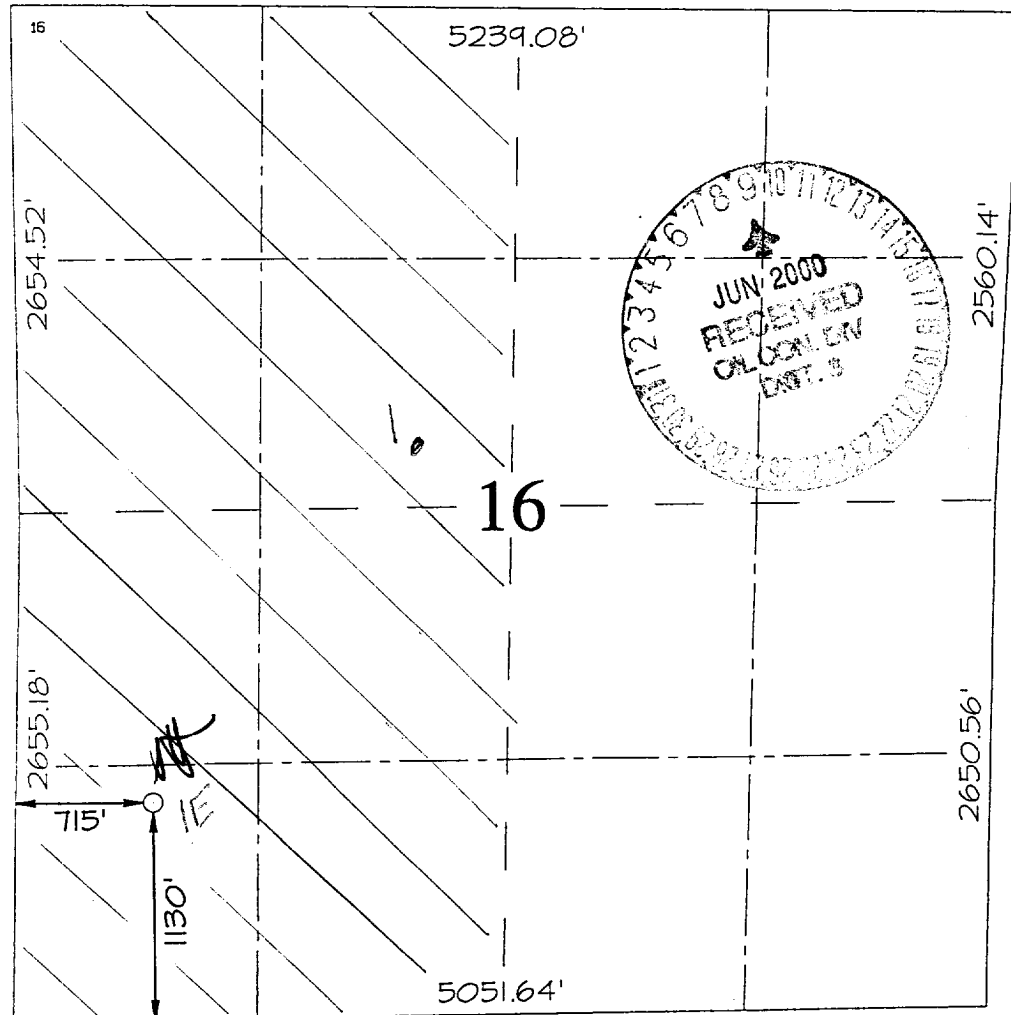
UL or lot no.	Section	Township	Range	Lot Idn	Feet from the	North/South line	Feet from the	East/West line	County
M	16	30N	11W		1130	SOUTH	715	WEST	SAN JUAN

¹¹ Bottom Hole Location If Different From Surface

UL or lot no.	Section	Township	Range	Lot Idn	Feet from the	North/South line	Feet from the	East/West line	County

¹² Dedicated Acres w/2 320	¹³ Joint or Infill	¹⁴ Consolidation Code	¹⁵ Order No.
--	-------------------------------	----------------------------------	-------------------------

NO ALLOWABLE WILL BE ASSIGNED TO THIS COMPLETION UNTIL ALL INTERESTS HAVE BEEN CONSOLIDATED OR A NON-STANDARD UNIT HAS BEEN APPROVED BY THE DIVISION



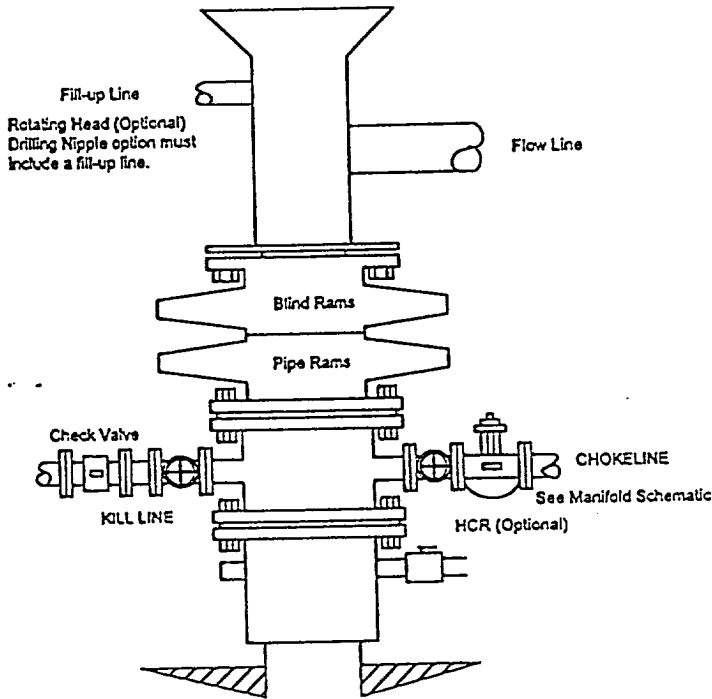
¹⁷ OPERATOR CERTIFICATION
I hereby certify that the information contained herein is true and complete to the best of my knowledge and belief.

Signature: *Jeff Patton*
Printed Name: Jeff Patton
Title: Production Engineer
Date: 6/6/00

¹⁸ SURVEYOR CERTIFICATION
I hereby certify that the well location shown on this plat was plotted from field notes of actual surveys made by me or under my supervision, and that the same is true and correct to the best of my belief.

Date of Survey: APRIL 11, 2000
Signature and Seal of Professional Surveyor: *Neale C. Edwards*
Certificate No. 6857

**BOPE SCHEMATIC FOR DRILLING OPERATIONS
CLASS 1 - NORMAL PRESSURE
CROSS TIMBERS OPERATING COMPANY STANDARD**



**CHOKE MANIFOLD SCHEMATIC FOR DRILLING OPERATIONS
2M SERVICE
CROSS TIMBERS OPERATING COMPANY STANDARD**

