



District I  
PO Box 1980, Hobbs, NM 88241-1980

District II  
PO Drawer 00, Artesia, NM 88211-0719

District III  
1000 Rio Brazos Rd., Aztec, NM 87410

District IV  
PO Box 2088, Santa Fe, NM 87504-2088

State of New Mexico  
Energy, Minerals & Natural Resources Department

OIL CONSERVATION DIVISION  
PO Box 2088  
Santa Fe, NM 87504-2088

Form C-102

Revised February 21, 1994

Instructions on back

Submit to Appropriate District Office

State Lease - 4 Copies

Fee Lease - 3 Copies

☐ AMENDED REPORT

WELL LOCATION AND ACREAGE DEDICATION PLAT

*API Number 30045-30274		*Pool Code 71599	*Pool Name BASIN DAKOTA
*Property Code 23712	*Property Name FOGELSON GAS COM		*Well Number 1E
*GRID No. 167067	*Operator Name CROSS TIMBERS OPERATING COMPANY		*Elevation 5922'

<sup>10</sup> Surface Location

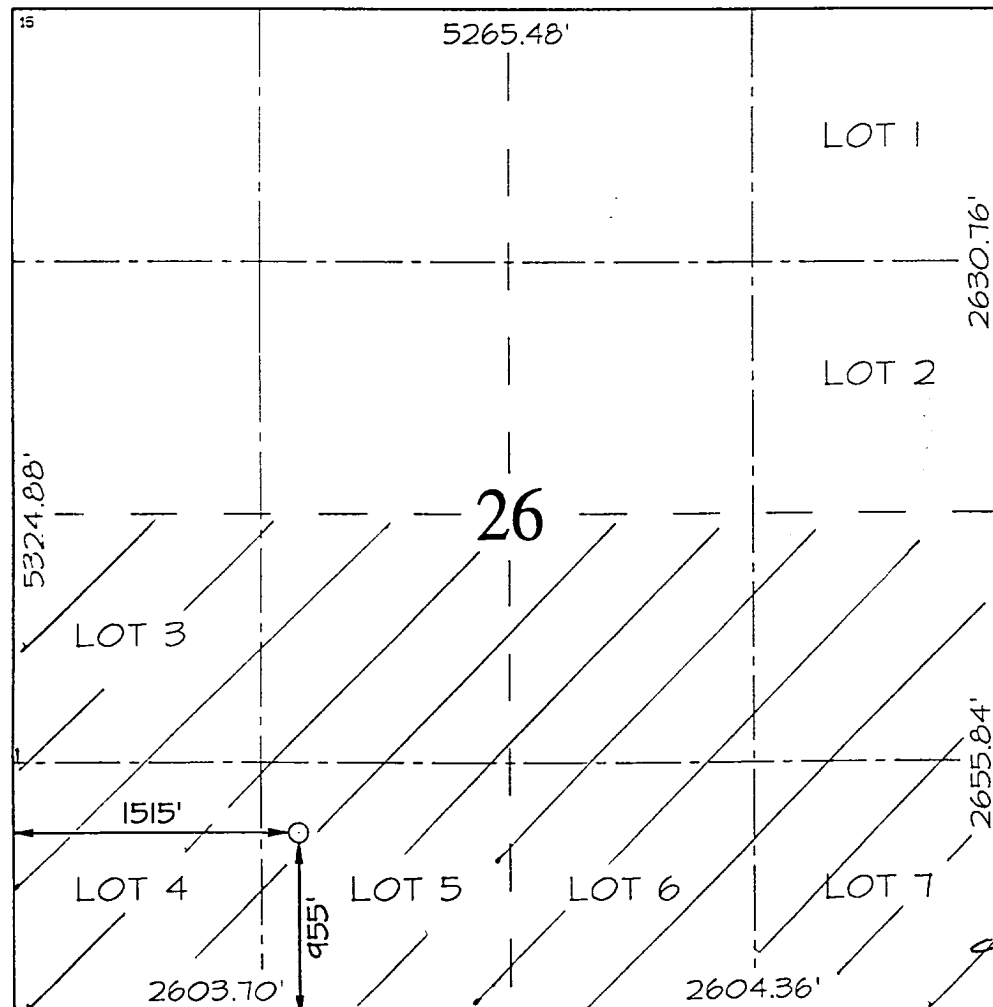
LL or lot no.	Section	Township	Range	Lot Ion	Feet from the	North/South line	Feet from the	East/West line	County
N	26	30N	11W		955	SOUTH	1515	WEST	SAN JUAN

<sup>11</sup> Bottom Hole Location If Different From Surface

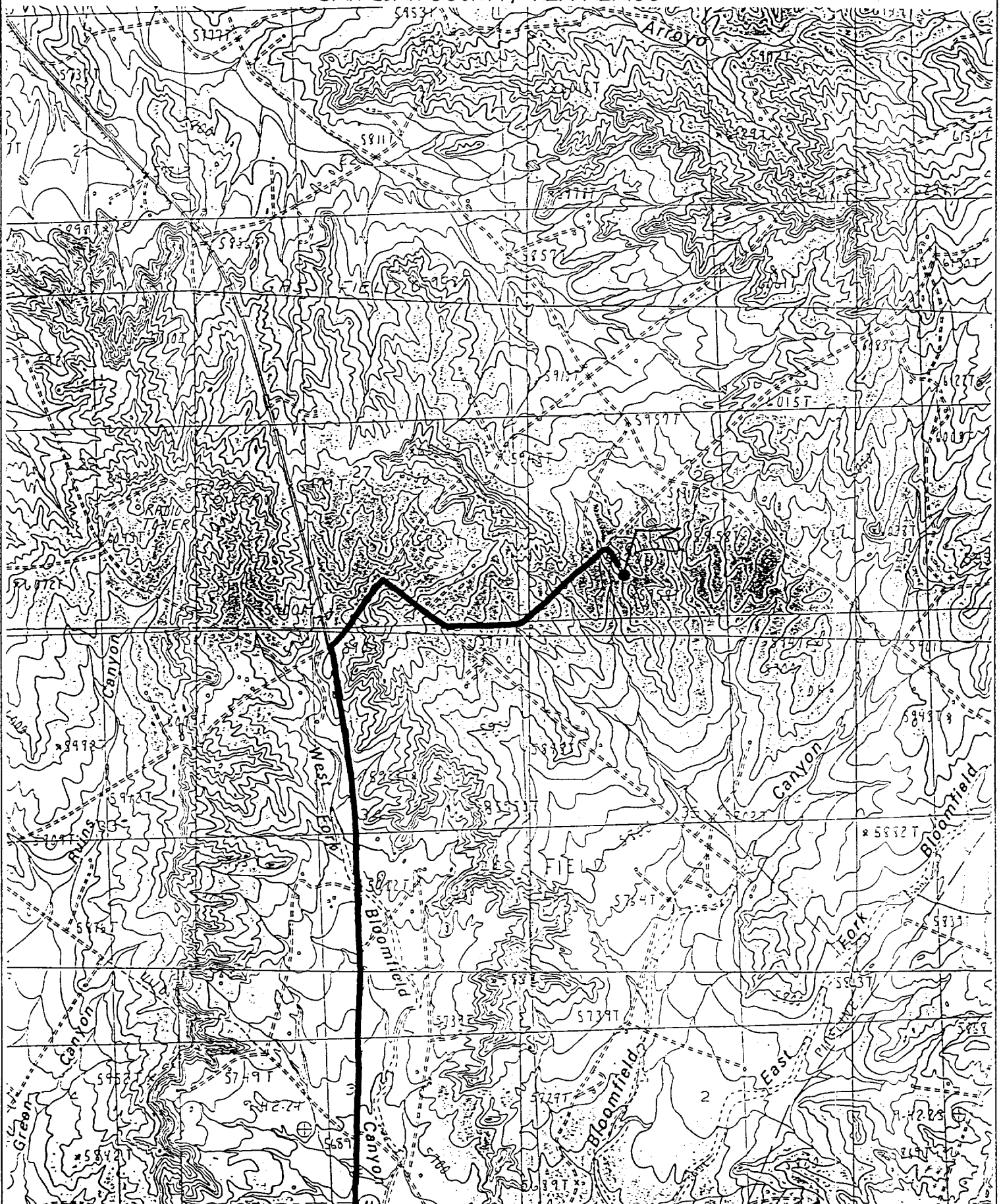
LL or lot no.	Section	Township	Range	Lot Ion	Feet from the	North/South line	Feet from the	East/West line	County

<sup>12</sup> Dedicated Acres 5/2 318.44	<sup>13</sup> Joint or Infill I	<sup>14</sup> Consolidation Code	<sup>15</sup> Order No.
---	------------------------------------	----------------------------------	-------------------------

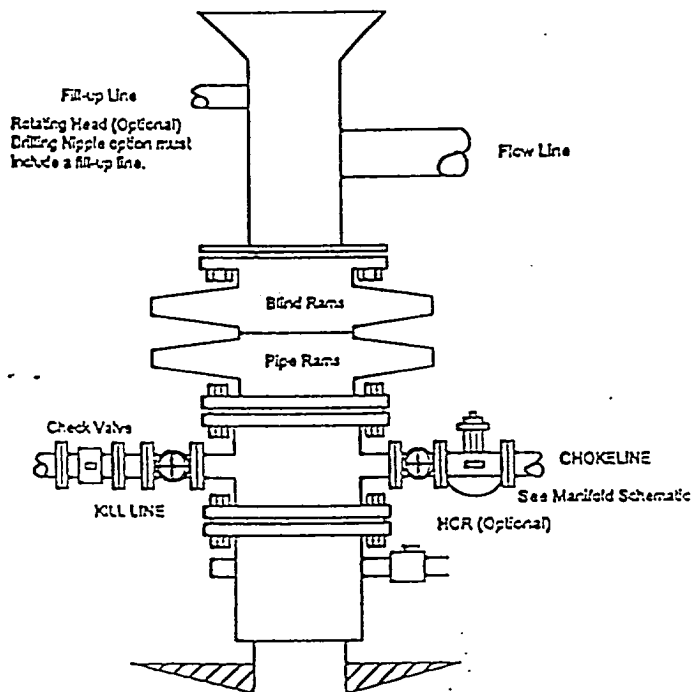
NO ALLOWABLE WILL BE ASSIGNED TO THIS COMPLETION UNTIL ALL INTERESTS HAVE BEEN CONSOLIDATED OR A NON-STANDARD UNIT HAS BEEN APPROVED BY THE DIVISION

	<p><sup>17</sup> OPERATOR CERTIFICATION</p> <p>I hereby certify that the information contained herein is true and complete to the best of my knowledge and belief.</p> <p>Signature <u>Jeff Patton</u></p> <p>Printed Name Jeff Patton</p> <p>Title Production Engineer</p> <p>Date 6/6/00</p>
	<p><sup>18</sup> SURVEYOR CERTIFICATION</p> <p>I hereby certify that the well location shown on this plat was plotted from field notes of actual surveys made by me or under my supervision and that the same is true and correct to the best of my belief.</p> <p>APRIL 5, 2000</p> <p>Date of Survey</p> <p>Signature and Seal</p> <p>NEALE C. EDWARDS NEW MEXICO 6857 Professional Surveyor</p> <p>Certificate Number 6857</p>

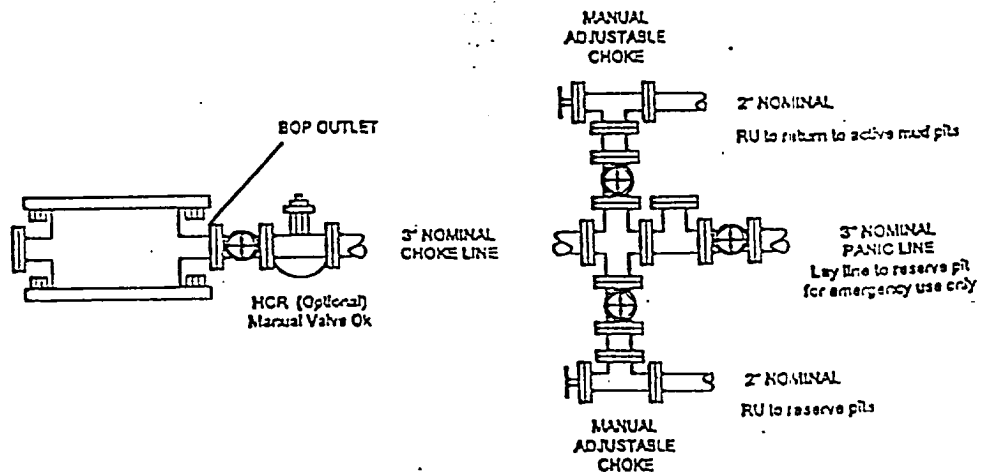
955' FSL & 1515' FWL, SECTION 26, T30N, R11W, N.M.P.M.  
SAN JUAN COUNTY, NEW MEXICO



BOPE SCHEMATIC FOR DRILLING OPERATIONS  
 CLASS 1 - NORMAL PRESSURE  
 CROSS TIMBERS OPERATING COMPANY STANDARD



CHOKE MANIFOLD SCHEMATIC FOR DRILLING OPERATIONS  
 2M SERVICE  
 CROSS TIMBERS OPERATING COMPANY STANDARD



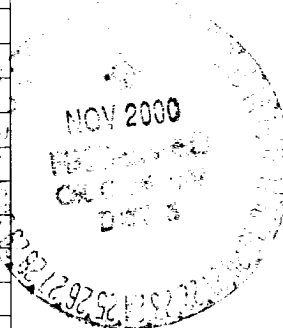


Cross Timbers Operating Company

## TABULATION OF DEVIATION TESTS

### CROSS TIMBERS OPERATING COMPANY

Depth	Degrees
202'	1/2°
400'	1/2°
899'	1-1/4°
1,392'	1-1/4°
1,890'	1°
2,350'	3/4°
2,846'	3/4°
3,336'	3/4°
3,829'	1°
4,327'	3/4°
4,816'	3/4°
5,332'	3/4°
5,527'	1/2°
6,016'	1/2°
6,505'	3/4°
6,971'	1°
7,155'	1°



### A F F I D A V I T

THIS IS TO CERTIFY that to the best of my knowledge the above survey details the deviation tests taken on CROSS TIMBERS OPERATING COMPANY'S

*Fogelson Gas Com #1E Section 26, T30N, R11W,  
API #30-045-30274  
San Juan County, New Mexico.*

Signed

Printed Name Jeffrey W. Patton

Title Drilling Engineer

THE STATE OF NEW MEXICO)

) SS.

COUNTY OF SAN JUAN )

BEFORE ME, the undersigned authority, on this day personally, Jeffrey W. Patton, known to me to be Drilling Engineer for Cross Timbers Operating Company and to be the person whose name is subscribed to the above statement, who, being by me duly sworn on oath, states that he has knowledge of the facts stated herein and that said statement is true and correct.

SUBSCRIBED AND SWORN to before me, a Notary Public in and for said County and State this 3rd day of November, 2000.

Notary Public

My Commission Expires:  
S:\Forms\Deviation Tests

6/10/03