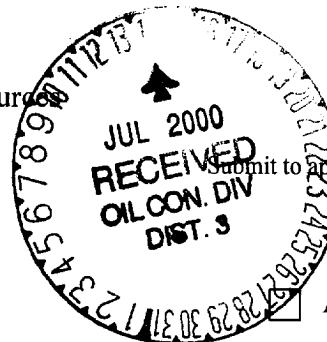


District I  
1625 N. French Dr., Hobbs, NM 88240  
District II  
811 S. 1st Street, Artesia, NM 88210  
District III  
1000 Rio Brazos Rd., Aztec, NM 87410  
District IV  
2040 South Pacheco, Santa Fe, NM 87505

State of New Mexico  
Energy, Minerals & Natural Resources

Oil Conservation Division  
2040 South Pacheco  
Santa Fe, NM 87505



Form C-101  
Revised March 17, 1999

Submit to appropriate District Office  
State Lease - 6 Copies  
Fee Lease - 5 Copies

AMENDED REPORT

APPLICATION FOR PERMIT TO DRILL, RE-ENTER, DEEPEN, PLUGBACK, OR ADD A ZONE

<sup>1</sup> Operator Name and Address Phillips Petroleum Company 5525 Highway 64, NBU 3004, Farmington, NM 87401		<sup>2</sup> OGRID Number 017654
<sup>4</sup> Property Code 009261	<sup>5</sup> Property Name San Juan 32-8 Unit	<sup>3</sup> API Number 30-045-30298 <sup>6</sup> Well No. 26A

<sup>7</sup> Surface Location									
UL or lot no.	Section	Township	Range	Lot. Idn	Feet from the	North/South Line	Feet from the	East/West line	County
C	16	31N	8W		380'	North	1342'	West	San Juan

<sup>8</sup> Proposed Bottom Hole Location If Different From Surface									
UL or lot no.	Section	Township	Range	Lot. Idn	Feet from the	North/South Line	Feet from the	East/West line	County
<del>C</del>	16	31N	8W		216	North	1478	west	San Juan
<sup>9</sup> Proposed Pool 1					<sup>10</sup> Proposed Pool 2				
72319 - Blanco Mesaverde									

<sup>11</sup> Work Type Code N	<sup>12</sup> Well Type Code G	<sup>13</sup> Cable/Rotary R	<sup>14</sup> Lease Type Code S-E1204-3	<sup>15</sup> Ground Level Elevation 6568' GL
<sup>16</sup> Multiple N	<sup>17</sup> Proposed Depth 6195'	<sup>18</sup> Formation Mesaverde	<sup>19</sup> Contractor Key Energy	<sup>20</sup> Spud Date 4th Qtr 2000

<sup>21</sup> Proposed Casing and Cement Program

Hole Size	Casing Size	Casing weight/foot	Setting Depth	Sacks of Cement	Estimated TOC
12-1/4"	9-5/8"	36#, J/K-55	320'	158.5sx	surface
8-3/4"	7"	20#, J/K-55	3820'	L-459sx; T-50sx	surface
6-1/4"	4-1/2"	11.6#, I/N-80	6195'	189 sx	100' inside 7" csg

<sup>22</sup> Describe the proposed program. If this application is to DEEPEN or PLUG BACK, give the data on the present productive zone and proposed new productive zone. Describe the blowout prevention program, if any. Use additional sheets if necessary.

\* The surface casing will be set at a minimum of 320', but could be set deeper if required to maintain hole stability.

\*\* The cement for the 4-1/2" casing is designed to cover 100' inside the intermediate shoe. Depending on hole conditions, the well may be cemented in a single stage or two staged.

See attached details for the cathodic protection for this well and the BOP equipment.

<sup>23</sup> I hereby certify that the information given above is true and complete to the best of my knowledge and belief. Signature: <i>Patsy Clugston</i> Printed name: Patsy Clugston Title: Sr. Regulatory/Proration Clerk Date: 7/12/00 Phone: 505-599-3454		OIL CONSERVATION DIVISION Approved by: <i>[Signature]</i> Title: DEPUTY OIL & GAS INSPECTOR, DIST. 3 Approval Date: 7-18-00 Expiration Date: JUL 18 2001 Conditions of Approval: Attached <input type="checkbox"/>	
---	--	--	--

District I  
 PO Box 1980, Hobbs, NM 88241-1980  
 District II  
 811 South First, Artesia, NM 88210  
 District III  
 1000 Rio Brazos Rd., Aztec, NM 87410  
 District IV  
 2040 South Pacheco, Santa Fe, NM 87505

State of New Mexico  
 Energy, Minerals & Natural Resources Department

OIL CONSERVATION DIVISION  
 2040 South Pacheco  
 Santa Fe, NM 87505

Form C-102  
 Revised October 18, 1994  
 Instructions on back  
 Submit to Appropriate District Office  
 State Lease - 4 Copies  
 Fee Lease - 3 Copies

☐ AMENDED REPORT

WELL LOCATION AND ACREAGE DEDICATION PLAT

APN Number <b>30-045-30298</b>		Pool Code <b>72319</b>	Pool Name <b>Blanco Mesaverde</b>
Property Code <b>009261</b>	Property Name <b>SAN JUAN 32-8 UNIT</b>		Well Number <b>26A</b>
OGUID No. <b>17654</b>	Operator Name <b>PHILLIPS PETROLEUM COMPANY</b>		Elevation <b>6568'</b>

10 Surface Location

UL or lot no.	Section	Township	Range	Lot Idn	Feet from the	North/South line	Feet from the	East/West line	County
<b>C</b>	<b>16</b>	<b>31N</b>	<b>8W</b>		<b>380'</b>	<b>NORTH</b>	<b>1342'</b>	<b>WEST</b>	<b>SAN JUAN</b>

11 Bottom Hole Location If Different From Surface

UL or lot no.	Section	Township	Range	Lot Idn	Feet from the	North/South line	Feet from the	East/West line	County
<b>C</b>	<b>16</b>	<b>31N</b>	<b>8W</b>		<b>216</b>	<b>FNL</b>	<b>1478</b>	<b>WEST</b>	<b>SAN JUAN</b>

12 Dedicated Acres	13 Joint or Infill	14 Consolidation Code	15 Order No.
<b>320 W/2</b>	<b>Y</b>	<b>U</b>	

NO ALLOWABLE WILL BE ASSIGNED TO THIS COMPLETION UNTIL ALL INTERESTS HAVE BEEN CONSOLIDATED OR A NON-STANDARD UNIT HAS BEEN APPROVED BY THE DIVISION

	<b>17 OPERATOR CERTIFICATION</b> I hereby certify that the information contained herein is true and complete to the best of my knowledge and belief  <i>Patsy Clugston</i> Signature Patsy Clugston Printed Name Sr. Regulatory/Proration Clerk Title July 12, 2000 Date
	<b>18 SURVEYOR CERTIFICATION</b> I hereby certify that the well location shown on this plat was plotted from field notes of actual surveys made by me or under my supervision, and that the same is true and correct to the best of my belief. 06/06/00 Date of Survey Signature and Seal of Professional Surveyer: 

# PHILLIPS PETROLEUM COMPANY

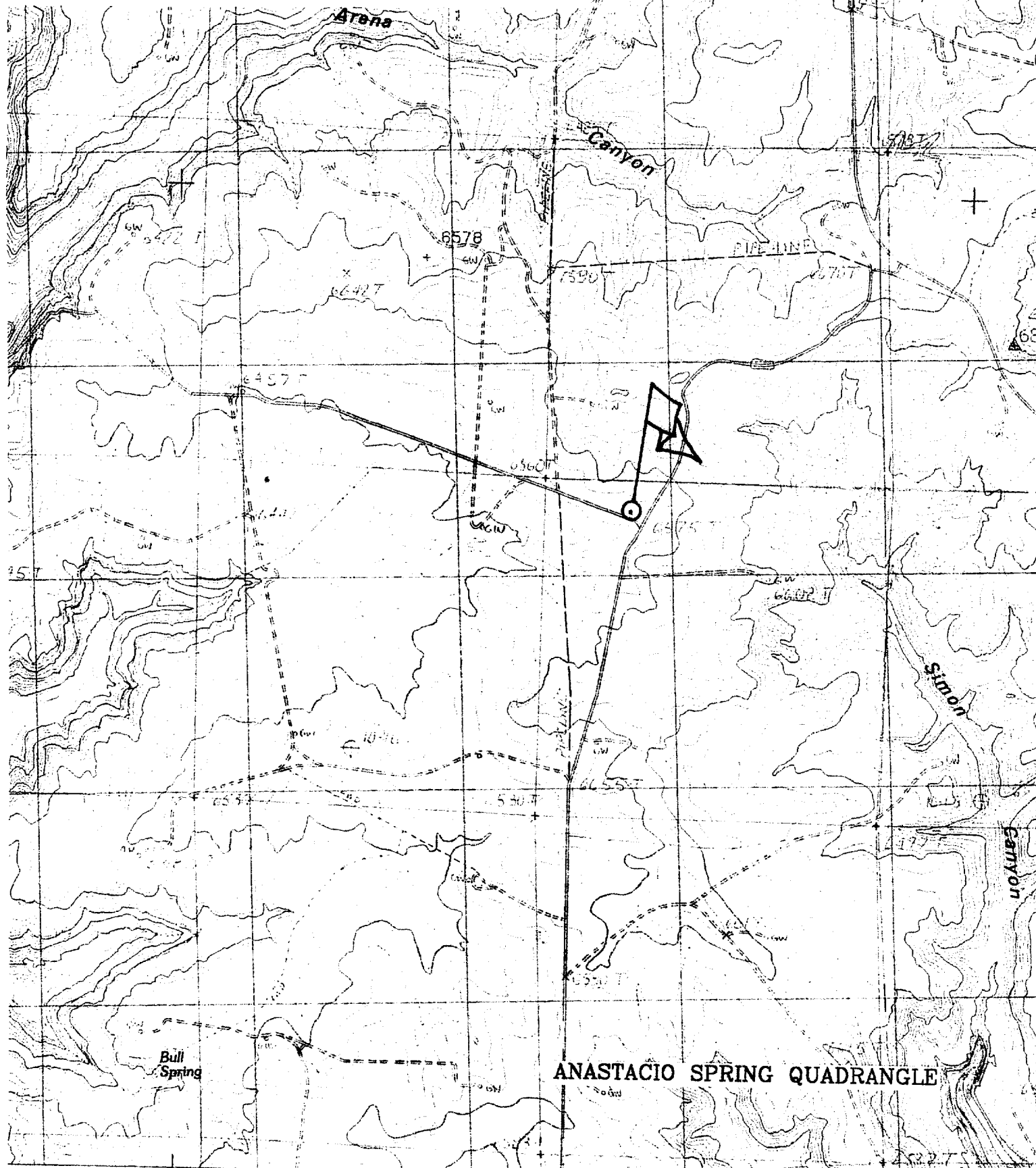
SAN JUAN 32-8 UNIT No. 26A

380' FNL, 1342' FWL

NW/4 SEC. 16, T-31-N, R-08-W, N.M.P.M.,

SAN JUAN COUNTY, NEW MEXICO

GROUND LEVEL ELEVATION: 6568'



## **BOP AND RELATED EQUIPMENT CHECK LIST**

### **3M SYSTEM:**

2 hydr. rams (pipe & blind) or hydr. ram and annular with blind ram on bottom

Kill Line (2-inch minimum)

1 kill line valve (2-inch minimum)

1 choke line valve

2 chokes (refer to diagram in attachment 1) on choke manifold

Upper kelly cock valve in open position with handle available

Safety valve (in open position) and subs to fit all drill strings in use (with handle available)

Pressure gauged on choke manifold

2 inch minimum choke line

Fill-up line above the uppermost preventer

*The BOPs will be pressure tested according to Onshore Order #2 III, A 1 and 30% safety factor.*