

DIST. CT I
1625 N. French Dr., Hobbs, NM 88240

DISTRICT II
811 South Frist, Artesia, NM 88210

DISTRICT III
1000 Rio Brazos Rd., Aztec, NM 87410

DISTRICT IV
2040 South Pacheco, Santa Fe, NM 87505

State of New Mexico
Energy, Minerals and Natural Resources

OIL CONSERVATION DIVISION

2040 South Pacheco
Santa Fe, NM 87505

Form C-101

Revised March 25, 1999

Instructions on back

Submit to Appropriate District Office

State Lease - 6 Copie

Fee Lease - 5 Copie

☐ AMENDED REPORT

APPLICATION FOR PERMIT TO DRILL, RE-ENTER, DEEPEN, PLUG BACK OR ADD A ZONE

¹ Operator Name and Address FOUR STAR OIL AND GAS COMPANY 3300 N. Butler Ave. Ste 100 Farmington NM 87401		² OGRID Number 131994
⁴ Property Code 26407	⁵ Property Name SLANE CANYON	³ API Number 30-045-30323
		⁶ Well No. 32-1

⁷ Surface Location									
UI or lot no.	Section	Township	Range	Lot.Idn	Feet From The	North/South Line	Feet From The	East/West Line	County
610	32	T30N	R10W		870	NORTH	1510	EAST	San Juan

⁸ Proposed Bottom Hole Location If Different From Surface									
UI or lot no.	Section	Township	Range	Lot.Idn	Feet From The	North/South Line	Feet From The	East/West Line	County
⁹ Proposed Pool 1 Blanco Mesa Verde					¹⁰ Proposed Pool 2				

¹¹ Work Type Code N	¹² WellType Code G	¹³ Rotary or C.T. R	¹⁴ Lease Type Code S	¹⁵ Ground Level Elevation 6103GR
¹⁶ Multiple N	¹⁷ Proposed Depth 4565'	¹⁸ Formation MESA VERDE	¹⁹ Contractor BEAR CAT	²⁰ Spud Date

²¹ Proposed Casing and Cement Program

SIZE OF HOLE	SIZE OF CASING	WEIGHT PER FOOT	SETTING DEPTH	SACKS OF CEMENT	EST. TOP
12-1/4"	8-5/8"	32#	350'	260 SX	SURFACE
7-7/8"	5-1/2"	15.5#	4565'	480 SX	SURFACE

²² Describe the proposed program. If this application is to DEEPEN or PLUG BACK give the data on the present productive zone and proposed new productive zone.
Describe the blowout prevention program, if any. Use additional sheets if necessary.

22 FOUR STAR OIL AND GAS CO. PROPOSES TO DRILL THIS DEVELOPMENT WELL TO A DEPTH OF 4565'. THIS WELL WILL TEST THE PRODUCTIVITY

23 OF THE MESA VERDE FORMATION. IF THE WELL IS UNPRODUCTIVE, IT WILL BE PLUGGED AND ABANDONED AS PER STATE REQUIREMENTS.

24

25 BOND COVERAGE FOR THIS WELL IS PROVIDED BY BOND NO. K02907914-C4073(NATION WIDE BLM BOND)& BOND NO. K02907914-F4072

26 (NATION WIDE BIA BOND)

27

28 A THREATENED -ENDANGERED SPECIES SURVEY AND ARCHAEOLOGICAL SURVEY WERE PERFORMED AS REQUIRED.

²³ I hereby certify that the rules and regulations of the Oil Conservation Division have been complied with and that the information given above is true and complete to the best of my knowledge and belief.

Signature

Arthur D. Archibeque

Printed Name

Arthur D. Archibeque

Title

Eng. Assistant

Date

08/10/2000

Telephone

325-4397

OIL CONSERVATION DIVISION

Approved By:

Title:

DEPUTY OIL & GAS INSPECTOR, DIST. 3

Approval Date:

8-11-00

Expiration Date:

AUG 11 2001

Conditions of Approval:

Attached ☐

District I
PO Box 1980, Hobbs, NM 88241-1980

District II
PO Drawer DD, Artesia, NM 88211-0719

District III
1000 Rio Brazos Rd., Aztec, NM 87410

District IV
PO Box 2088, Santa Fe, NM 87504-2088

State of New Mexico
Energy, Minerals & Natural Resources Department

OIL CONSERVATION DIVISION
PO Box 2088
Santa Fe, NM 87504-2088

Form C-102

Revised February 21, 1994

Instructions on back
Submit to Appropriate District Office
State Lease - 4 Copies
Fee Lease - 3 Copies

☐ AMENDED REPORT

WELL LOCATION AND ACREAGE DEDICATION PLAT

*API Number 30-045-30323		*Pool Code 72319 -	*Pool Name BLANCO MESAVERDE -
*Property Code 26407	*Property Name SLANE CANYON		*Well Number 32-1
*GRID No. 131994	*Operator Name FOUR STAR OIL & GAS COMPANY		*Elevation 6105 -


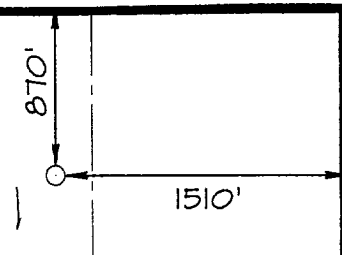
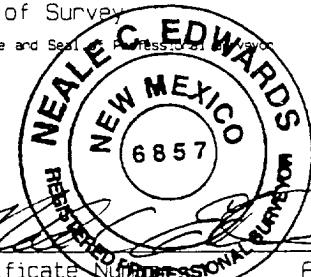
¹⁰ Surface Location

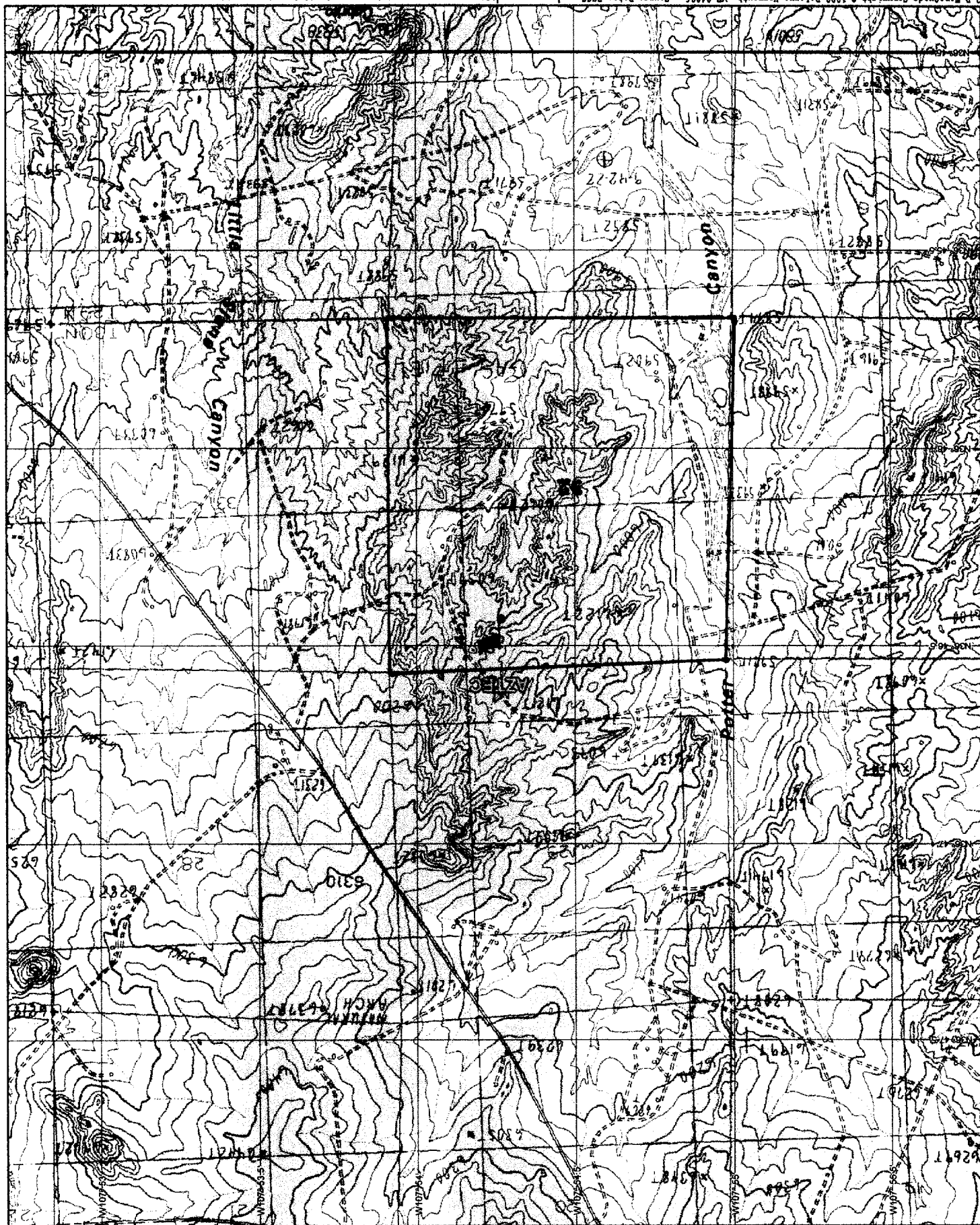
UL or lot no.	Section	Township	Range	Lot Idn	Feet from the	North/South line	Feet from the	East/West line	County
B	32	30N	10W		870	NORTH	1510	EAST	SAN JUAN

¹¹ Bottom Hole Location If Different From Surface

UL or lot no.	Section	Township	Range	Lot Idn	Feet from the	North/South line	Feet from the	East/West line	County
¹² Dedicated Acres 320		¹³ Joint or Infill		¹⁴ Consolidation Code		¹⁵ Order No.			

NO ALLOWABLE WILL BE ASSIGNED TO THIS COMPLETION UNTIL ALL INTERESTS HAVE BEEN CONSOLIDATED OR A NON-STANDARD UNIT HAS BEEN APPROVED BY THE DIVISION

15 5216.64'	LOT 1	32	529.56'		¹⁷ OPERATOR CERTIFICATION I hereby certify that the information contained herein is true and complete to the best of my knowledge and belief. <u>Arthur D. Archibegui</u> Signature <u>Arthur D. Archibegui</u> Printed Name <u>Engineer Assistant</u> Title <u>8/10/2000</u> Date
	LOT 2				
	LOT 3				
					¹⁸ SURVEYOR CERTIFICATION I hereby certify that the well location shown on this plat was plotted from field notes of actual surveys made by me or under my supervision, and that the same is true and correct to the best of my belief. <u>JULY 20, 2000</u> Date of Survey <u>NEALE C. EDWARDS</u> Signature and Seal  Certificate Number <u>6857</u>



DRILLING PROGRAM

OPERATOR: FOUR STAR OIL & GAS Co.
LEASE NAME: SLANE CANYON 32-1
LOCATION: 870' FNL-1510' FEL SEC. 32 30N-10W SAN JUAN COUNTY, NEW MEXICO

1. **ESTIMATED TOPS OF GEOLOGIC MARKERS.**

THE ESTIMATED TOPS OF IMPORTANT GEOLOGIC MARKERS ARE AS FOLLOWS:

<u>FORMATION</u>	<u>DEPTH</u>	<u>SUBSEA</u>
MESA VERDE	4610'	1725'
T.D.	4565'	4180'

2. **ESTIMATED DEPTHS OF ANTICIPATED OIL, GAS, WATER, OR OTHER MINERAL BEARING ZONES.**

<u>FORMATION</u>	<u>DEPTH</u>	<u>SUBSTANCE</u>
MESA VERDE	4610'	GAS
T.D.	4565'	--

IF ANY UNEXPECTED WATER OR MINERAL BEARING ZONES ARE ENCOUNTERED DURING DRILLING, THEY WILL BE REPORTED, EVALUATED, AND PROTECTED AS CIRCUMSTANCES AND REGULATIONS REQUIRE.

3. **BOP EQUIPMENT.**

TEXACO'S MINIMUM SPECIFICATIONS FOR PRESSURE CONTROL EQUIPMENT ARE AS FOLLOWS:

RAM TYPE: HYDRAULIC DOUBLE, 3000 PSI W.P.

RAM TYPE PREVENTERS AND ASSOCIATED EQUIPMENT SHALL BE TESTED TO APPROVED STACK WORKING PRESSURE IF ISOLATED BY TEST PLUG OR TO 70 PERCENT OF INTERNAL YIELD PRESSURE OF CASING. PRESSURE SHALL BE MAINTAINED FOR AT LEAST 10 MINUTES OR UNTIL REQUIREMENTS OF TEST ARE MET, WHICHEVER IS LONGER. IF A TEST PLUG IS UTILIZED, NO BLEED-OFF PRESSURE IS ACCEPTABLE. FOR A TEST NOT UTILIZING A TEST PLUG, IF A DECLINE IN PRESSURE OF MORE THAN 10 PERCENT IN 30 MINUTES OCCURS, THE TEST SHALL BE CONSIDERED TO HAVE FAILED. VALVE ON CASING HEAD BELOW TEST PLUG SHALL BE OPEN DURING TEST OF BOP STACK.

ANNULAR TYPE PREVENTERS (IF USED) SHALL BE TESTED TO 50 PERCENT OF RATED WORKING PRESSURE. PRESSURE SHALL BE MAINTAINED AT LEAST 10 MINUTES OR UNTIL PROVISIONS OF TEST ARE MET, WHICHEVER IS LONGER.

AS A MINIMUM, THE ABOVE TEST SHALL BE PERFORMED:

- A. WHEN INITIALLY INSTALLED;
- B. WHENEVER ANY SEAL SUBJECT TO TEST PRESSURE IS BROKEN
- C. FOLLOWING RELATED REPAIRS; AND
- D. AT 30 DAY INTERVALS

VALVES SHALL BE TESTED FROM WORKING PRESSURE SIDE DURING BOPE TESTS WITH ALL DOWNSTREAM VALVES OPEN.

WHEN TESTING THE KILL LINE VALVE(S), THE CHECK VALVE SHALL BE HELD OPEN OR THE BALL REMOVED.