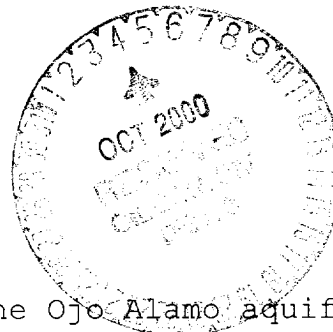


C. HARRADEN/September 29, 2000

CONOCO INC/Maddox WN Federal # 5 APD

STIPULATION/CONDITION OF APPROVAL



In order to protect the integrity of the Ojo Alamo aquifer, minimum surface csg. depth of 641' is stipulated as a condition of approval for this APD.

---

UNITED STATES  
DEPARTMENT OF THE INTERIOR  
BUREAU OF LAND MANAGEMENT

FORM APPROVED  
OMB NO. 1004-0136  
Expires February 28, 1995

APPLICATION FOR PERMIT TO DRILL OR DEEPEN

1a. TYPE OF WORK

DRILL ☒

DEEPEN ☐

b. TYPE OF WELL

OIL WELL ☐

GAS WELL ☒

OTHER

SINGLE ZONE ☒

MULTIPLE ZONE ☐

2. NAME OF OPERATOR

Conoco Inc.

3. ADDRESS AND TELEPHONE NO.

10 Desta Drive, Suite 649W, Midland, TX 79705; 915/686-5515

4. LOCATION OF WELL (Report location clearly and in accordance with any State requirements\*)

At surface

1080' FNL & 1215' FEL

At proposed prod. Zone

1080' FNL & 1215' FEL

14. DISTANCE IN MILES AND DIRECTION FROM NEAREST TOWN OR POST OFFICE\*

15. DISTANCE FROM PROPOSED\*  
LOCATION TO NEAREST  
PROPERTY OR LEASE LINE, FT.  
(Also to nearest drlg. Unit line, if any)

6. NO. OF ACRES IN LEASE

9. PROPOSED DEPTH

2230'

12. NO. OF ACRES ASSIGNED  
TO THIS WELL

E/320

18. DISTANCE FROM PROPOSED LOCATION\*  
TO NEAREST WELL, DRILLING, COMPLETED,  
OR APPLIED FOR, ON THIS LEASE, FT.

21. ELEVATIONS (Show whether DF, RT, GR, etc.)

5901' GR

22. APPROX. DATE WORK WILL START\*

9/15/00

This action is subject to technical and procedural review pursuant to 43 CFR 3105.2-2. PROPOSED CASING AND CEMENTING PROGRAMMING OPERATIONS AUTHORIZED ARE SUBJECT TO COMPLIANCE WITH ATTACHED GENERAL REQUIREMENTS.

SIZE OF HOLE	GRADE, SIZE OF CASING	WEIGHT PER FOOT	SETTING DEPTH	QUANTITY OF CEMENT
8 3/4"	J-55; 7"	20#	250'	70 sxs, circ.
6 1/4"	J-55; 4 1/2"	10.5#	2230' -	240 sxs, circ. to surface

It is proposed to drill a vertical wellbore in the Basin Fruitland Coal Pool. An NOS was filed 4/26/00. The well will be drilled and equipped according to the following additional attachments:

1. Well Location & Acreage Dedication Plat (C-102).
2. Proposed Well Plan Outline.
3. Cementing Plan.
4. Blowout Preventer Hookup.
5. Surface Use Plan including temporary pipeline tie specifications.
6. Production Facility Layout.

APD/ROW

This application includes ROW's for the well pad, and pipeline. The pipe-wall thickness is .156 and the pipe-wall strength is 42,000# yield.

IN ABOVE SPACE DESCRIBE PROPOSED PROGRAM: If proposal is to deepen give data on present productive zone and proposed new productive zone. If proposal is to drill or deepen directionally, give pertinent data on subsurface locations and measured and true vertical depths. Give blowout preventer program, if any.

SIGNED [Signature] TITLE Sr. Property Analyst

DATE 8/4/00

PERMIT NO. \_\_\_\_\_

APPROVAL DATE 10/2/00

Application approval does not warrant or certify that the applicant holds legal or equitable title to those rights in the subject lease which would entitle the applicant to conduct operations thereon.

CONDITIONS OF APPROVAL, IF ANY:

APPROVED BY \_\_\_\_\_

TITLE \_\_\_\_\_

DATE 10/2/00

\*See Instructions On Reverse Side

Title 18 U.S.C. Section 1001, makes it a crime for any person knowingly and willfully to make to any department or agency of the United States any false, fictitious or fraudulent statements or representations as to any matter within its jurisdiction.

District I  
PO Box 1980, Hobbs, NM 88241-1980

State of New Mexico  
Energy, Minerals & Natural Resources Department

Form C-102  
Revised February 21, 1994

District II  
PO Drawer DD, Artesia, NM 88211-0719

OIL CONSERVATION DIVISION  
PO Box 2088  
Santa Fe, NM 87504-2088

Submit to Appropriate District Office  
State Lease - 4 Copies  
Fee Lease - 3 Copies

District III  
1000 Rio Brazos Rd., Aztec, NM 87410

District IV  
PO Box 2088, Santa Fe, NM 87504-2088

AMENDED REPORT

WELL LOCATION AND ACREAGE DEDICATION PLAT

*API Number 30-045-30338		*Pool Code 71629	*Pool Name BASIN FRUITLAND COAL.
*Property Code 14119	*Property Name MADDOX WN FEDERAL		*Well Number 5
*OGRID No. 005073	*Operator Name CONOCO, INC.		*Elevation 5901'

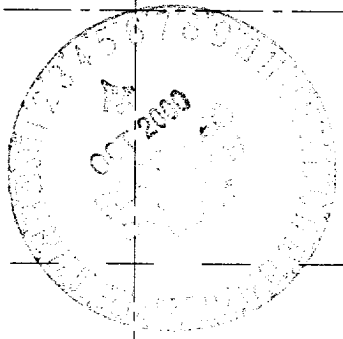
<sup>10</sup> Surface Location

UL or lot no. A	Section 24	Township 30N	Range 13W	Lot Idn	Feet from the 1080	North/South line NORTH	Feet from the 1215	East/West line EAST	County SAN JUAN
--------------------	---------------	-----------------	--------------	---------	-----------------------	---------------------------	-----------------------	------------------------	--------------------

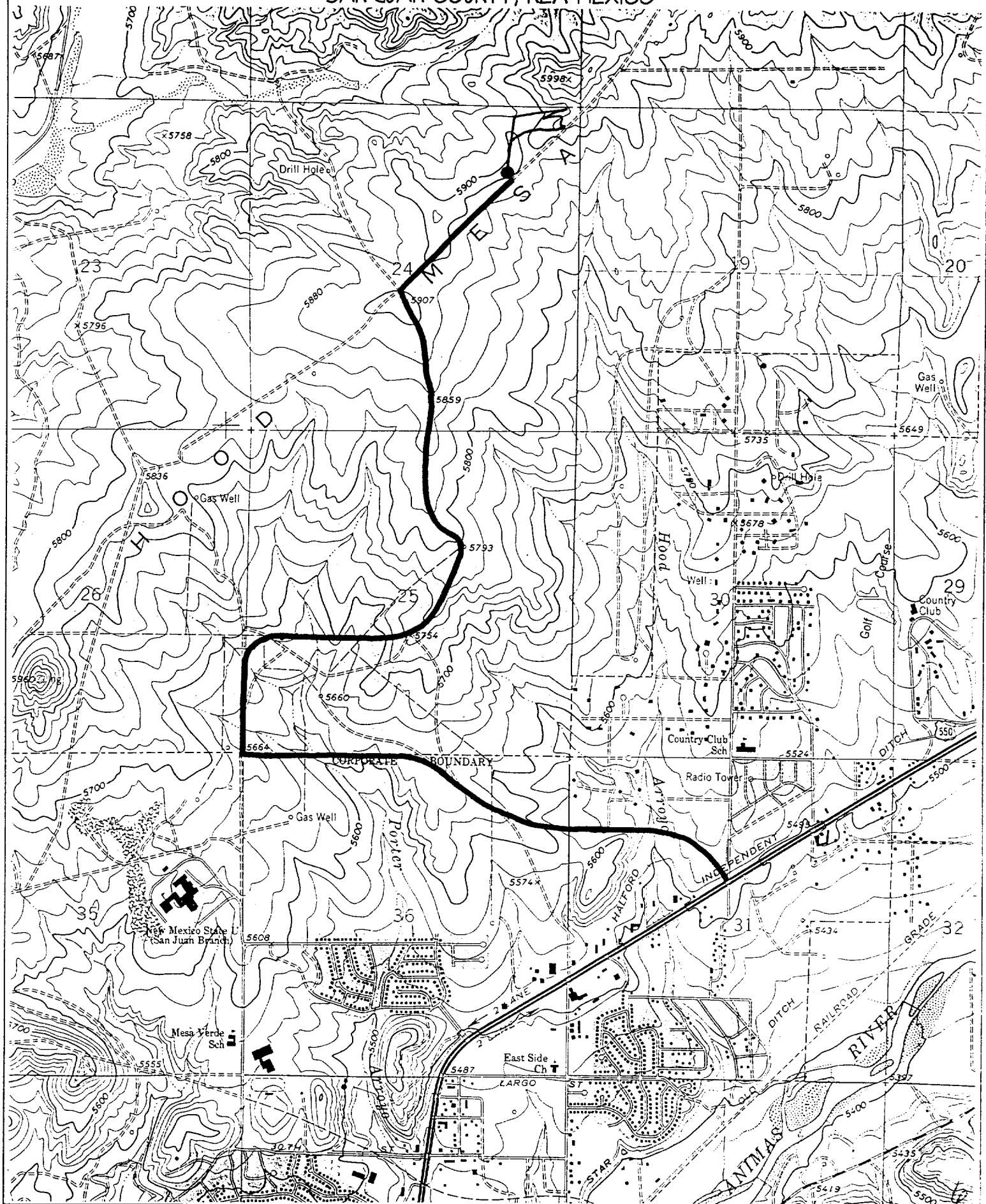
<sup>11</sup> Bottom Hole Location If Different From Surface

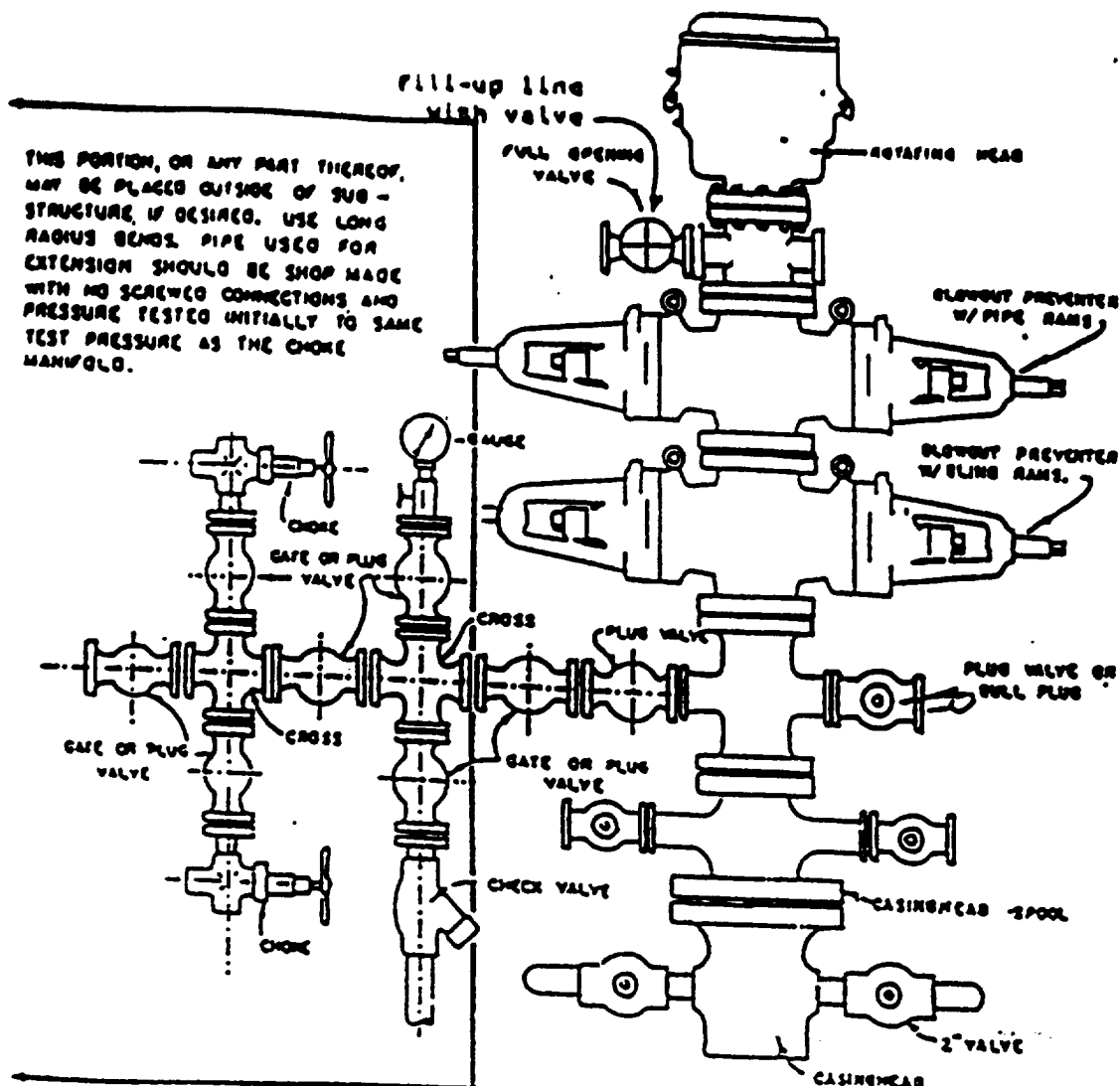
UL or lot no.	Section	Township	Range	Lot Idn	Feet from the	North/South line	Feet from the	East/West line	County
<sup>12</sup> Dedicated Acres 320 ac.		<sup>13</sup> Joint or Infill		<sup>14</sup> Consolidation Code		<sup>15</sup> Order No.			

NO ALLOWABLE WILL BE ASSIGNED TO THIS COMPLETION UNTIL ALL INTERESTS HAVE BEEN CONSOLIDATED OR A NON-STANDARD UNIT HAS BEEN APPROVED BY THE DIVISION

	5276.70'		1080'	1215'	2614.26'	<sup>17</sup> OPERATOR CERTIFICATION I hereby certify that the information contained herein is true and complete to the best of my knowledge and belief.	
	2617.56'					Signature JoAnn Johnson Printed Name Sr. Property Analyst Title	
2650.56'		24		2633.40'		Date APRIL 25, 2000	
5235.12'		2614.26'		2633.40'		<sup>18</sup> SURVEYOR CERTIFICATION I hereby certify that the well location shown on this plat was plotted from field notes of actual surveys made by me or under my supervision, and that the same is true and correct to the best of my belief.	
						Date of Survey Signature and Seal of Professional Surveyor NEALE C. EDWARDS NEW MEXICO 6857 REGISTERED PROFESSIONAL SURVEYOR Certificate Number 6857	

CONOCO, INC. MADDOX WN FEDERAL #5  
1080' FNL & 1215' FEL, SECTION 24, T30N, R13W, N.M.P.M.  
SAN JUAN COUNTY, NEW MEXICO





## BLOWOUT PREVENTER HOOKUP

Drilling contractors used in the San Juan Basing supply 3000 psi equipment, but cannot provide annular preventors because of sub-structure limitations. Maximum anticipated surface pressures for this well will not exceed the working pressure of the proposed BOP system. Please see the attached BOP diagram details 2000 psi equipment according to Onshore Order No. 2 even though the equipment will test to 3000 psi. The 2000 psi system allows the deletion of the annular preventor and fulfills your requirements (note diagram No. 1). In addition, the following equipment will comprise the 2000 psi system:

1. Two rams with one blind and one pipe ram.
2. Kill line (2 inch maximum).
3. One kill line valve.
4. One choke line valve.
5. Two chokes (reference diagram No. 1).
6. Upper kelly cock valve with handle.
7. Safety valve and subs to fit all drill strings in use.
8. Two-inch minimum choke line.
9. Pressure gauge on choke manifold.
10. Fill-up line above the upper most preventor.
11. Rotating head.

# Cathodic Protection System Description

<b>Anode Bed Type</b>	One Well	
<b>Hole Size</b>	8"	
<b>Hole Depth</b>	200' - 500'	As required to place anodes below moisture and in low resistance strata.
<b>Surface Casing</b>	8" Diam., $\geq$ 20' Length, Cemented In Annular Space	When needed, casing will be installed at an adequate depth to control ground water flow. Casing will extend a minimum of 2' above grade, be surrounded by a concrete pad, and sealed with a PVC cap. Steel casing will be substituted when boulders are encountered.
<b>Vent Pipe</b>	1" Diam. PVC	Vent pipe will extend from bottom of hole, through top of casing cap, and sealed with a 1" perforated PVC cap.
<b>Type Of Anodes</b>	Cast Iron Or Graphite	
<b>Number Of Anodes</b>	8 - 20	Sufficient quantity to achieve a total anode bed resistance of $< 1$ ohm and a design life $\geq$ 20 years.
<b>Anode Bed Backfill</b>	Loresco SW Calcined Petroleum Coke Breeze	Installed from bottom of hole to 10' above top anode.
<b>Anode Junction Box</b>	8 - 20 Circuit Fiberglass Or Metal	Sealed to prevent insect & rodent intrusion.
<b>Current Splitter Box</b>	2 - 5 Circuit Metal	Sealed to prevent insect & rodent intrusion.
<b>DC / AC Cable</b>	DC: #2, #4, #6, #8 Stranded Copper (One Size Or Any Combination Of) With High Molecular Weight Polyethylene (HMWPE) Insulation.  AC: #8 Stranded Copper HMWPE	18" depth in typical situation, 24" depth in roadway, & 36" depth in arroyo's and streams. EXCEPTION: If trenching is in extremely hard substratum, depth will be 6 - 12" with cable installed in conduit. Installed above foreign pipelines if 1' clearance is available, if not, installed under foreign pipeline with 1' clearance (AC cable a/ways installed under foreign pipeline in conduit).
<b>Power Source</b>	1) Rectifier 2) Solar Power Unit 3) Thermoelectric Generator	Choice of power source depending on availability of AC & other economic factors.
<b>External Painting</b>	Color to be selected according to BLM specifications.	Paint applied to any surface equipment associated with the CP system which can reasonably be painted.