

UNITED STATES  
DEPARTMENT OF THE INTERIOR  
BUREAU OF LAND MANAGEMENT

APPLICATION FOR PERMIT TO DRILL, DEEPEN, OR PLUG BACK

1a. Type of Work DRILL	5. Lease Number SF-078116-A Unit Reporting Number	
1b. Type of Well GAS	6. If Indian, All. or Tribe	
2. Operator <b>BURLINGTON RESOURCES</b> Oil & Gas Company	7. Unit Agreement Name	
3. Address & Phone No. of Operator PO Box 4289, Farmington, NM 87499  (505) 326-9700	8. Farm or Lease Name Florance B 9. Well Number #1B	
4. Location of Well 1895' FNL, 1950' FWL  Latitude 36° 48.0, Longitude 107° 48.3	10. Field, Pool, Wildcat Blanco Mesaverde 11. Sec., Twn, Rge, Mer. (NMPM) F Sec. 20, T-30-N, R-9-W API # 30-045-30344	
14. Distance in Miles from Nearest Town 11 miles from Aztec	12. County San Juan	13. State NM
15. Distance from Proposed Location to Nearest Property or Lease Line 1895'	17. Acres Assigned to Well 320 W/2 0	
16. Acres in Lease		
18. Distance from Proposed Location to Nearest Well, Drlg, Compl, or Applied for on this Lease 1000'		
19. Proposed Depth 5463'	20. Rotary or Cable Tools Rotary	
This action is subject to technical and procedural review pursuant to 43 CFR 3185.3 and appeal pursuant to 43 CFR 3185.4.		
21. Elevations (DF, FT, GR, Etc.) 6136' GL	22. Approx. Date Work will Start	
23. Proposed Casing and Cementing Program See Operations Plan attached	DRILLING OPERATIONS AUTHORIZED ARE SUBJECT TO COMPLIANCE WITH ATTACHED "GENERAL CONDITIONS"	
24. Authorized by: <u>Reggie Cole</u> Regulatory/Compliance Supervisor	Date <u>8-1-00</u>	

PERMIT NO. \_\_\_\_\_ APPROVAL DATE \_\_\_\_\_  
APPROVED BY /s/ Jim Lovato TITLE \_\_\_\_\_ DATE \_\_\_\_\_

Archaeological Report to be submitted

Threatened and Endangered Species Report to be submitted

NOTE: This format is issued in lieu of U.S. BLM Form 3160-3

Title 18 U.S.C. Section 1001, makes it a crime for any person knowingly and willfully to make to any department or agency of the United States any false, fictitious or fraudulent statements or presentations as to any matter within its jurisdiction.

submitted in lieu of Form 3160-5

UNITED STATES  
DEPARTMENT OF THE INTERIOR  
BUREAU OF LAND MANAGEMENT

Sundry Notices and Reports on Wells

1. Type of Well

GAS

2. Name of Operator

**BURLINGTON  
RESOURCES**

OIL & GAS COMPANY

3. Address & Phone No. of Operator

PO Box 4289, Farmington, NM 87499 (505) 326-9700

4. Location of Well, Footage, Sec., T, R, M

1895' FNL, 1950' FWL, Sec. 20, T-30-N, R-9-W, NMPM

5. Lease Number

SF-078116-A

6. If Indian, All. or

Tribe Name

7. Unit Agreement Name

8. Well Name & Number

Florance B #1B

9. API Well No.

30-045-

10. Field and Pool

Blanco Mesaverde

11. County and State

San Juan Co, NM

12. CHECK APPROPRIATE BOX TO INDICATE NATURE OF NOTICE, REPORT, OTHER DATA

Type of Submission

☒ Notice of Intent  
☐ Subsequent Report  
☐ Final Abandonment

Type of Action

☐ Abandonment  
☐ Recompletion  
☐ Plugging Back  
☐ Casing Repair  
☐ Altering Casing  
☐ Other -  
☒ Change of Plans  
☐ New Construction  
☐ Non-Routine Fracturing  
☐ Water Shut off  
☐ Conversion to Injection

13. Describe Proposed or Completed Operations

It is intended to alter the casing depths and cement of the subject well.

Revisions:

Mud Program:

Interval	Type	Weight	Fluid Loss
0-200'	Spud	8.4-9.0	No control
200-3201'	LSND	8.4-9.0	No control
3201-5463'	Air/Mist	n/a	n/a

Casing Program:

Hole Size	Depth Interval	Casing Size	Weight	Grade
12 1/4"	0-200'	9 5/8"	32.3#	H-40
8 3/4"	0-3201'	7"	20.0#	J-55
6 1/4"	3101-5463'	4 1/2"	10.5#	J-55

Cementing Program:

9 5/8" surface casing - 159 sx Class "B" cement with 0.25 pps Flocele and 3% calcium chloride (188 cu.ft. of slurry, 200% excess to circulate to surface).  
7" intermediate casing - lead w/328 sx 50/50 Class "G"/Trinity Light with 2.5% sodium metasilicate, 2% calcium chloride, 10 pps Gilsonite, 0.5 pps Flocele. Tail with 90 sx Class "G" 50/50 poz w/2% gel, 2% calcium chloride, 5 pps Gilsonite, 0.1% antifoam and 0.25 pps Flocele (963 cu.ft. of slurry, 100% excess to circulate to surface).  
7" intermediate casing alternative two stage: Stage collar at 2153'. First stage: cement w/241 sx 50/50 Class "G" poz w/2% gel, 2% calcium chloride, 5 pps Gilsonite, 0.1% antifoam and 0.25 pps Flocele. Second stage: w/261 sx 50/50 Class "G"/Trinity Light with 2.5% sodium metasilicate, 2% calcium chloride, 10 pps Gilsonite, 0.5 pps Flocele (963 cu.ft. of slurry, 100% excess to circulate to surface).  
4 1/2" production liner - cement with 236 sx Class "G" 50/50 poz w/4.5% gel, 0.25 pps Flocele, 5 pps Gilsonite, 0.25% fluid loss, 0.1% retardant (339 cu.ft., 50% excess to circulate liner).

14. I hereby certify that the foregoing is true and correct.

Signed

*[Signature]*

Title Regulatory Supervisor Date 11/8/00

TLW

(This space for Federal or State Office use)

APPROVED BY

*[Signature]*

Title

Date

CONDITION OF APPROVAL, if any:

Title 18 U.S.C. Section 1001, makes it a crime for any person knowingly and willfully to make to any department or agency of the United States any false, fictitious or fraudulent statements or representations as to any matter within its jurisdiction.

NM000

District I  
PO Box 1980, Hobbs, NM 88241-1980

District II  
PO Drawer 00, Artesia, NM 88211-0719

District III  
1000 Rio Brazos Rd., Aztec, NM 87410

District IV  
PO Box 2088, Santa Fe, NM 87504-2088

State of New Mexico  
Energy, Minerals & Natural Resources Department

OIL CONSERVATION DIVISION  
PO Box 2088  
Santa Fe, NM 87504-2088

Form C-102  
Revised February 21, 1994  
Instructions on back  
Submit to Appropriate District Office  
State Lease - 4 Copies  
Fee Lease - 3 Copies

☐ AMENDED REPORT

### WELL LOCATION AND ACREAGE DEDICATION PLAT

1 API Number 30-045- <i>30 344</i>		2 Pool Code 72319		3 Pool Name Blanco Mesaverde	
4 Property Code 7023		5 Property Name FLORANCE B			6 Well Number 1B
7 OGRID No 14538		8 Operator Name BURLINGTON RESOURCES OIL & GAS COMPANY			9 Elevation 6136'

#### 10 Surface Location

UL or lot no.	Section	Township	Range	Lot Id.	Feet from the	North/South line	Feet from the	East/West line	County
F	20	30N	9W		1895	NORTH	1950	WEST	SAN JUAN

#### 11 Bottom Hole Location If Different From Surface

UL or lot no.	Section	Township	Range	Lot Id.	Feet from the	North/South line	Feet from the	East/West line	County
12 Dedicated Acres W/320		13 Joint or Infill I		14 Consolidation Code		15 Order No.			

NO ALLOWABLE WILL BE ASSIGNED TO THIS COMPLETION UNTIL ALL INTERESTS HAVE BEEN CONSOLIDATED OR A NON-STANDARD UNIT HAS BEEN APPROVED BY THE DIVISION

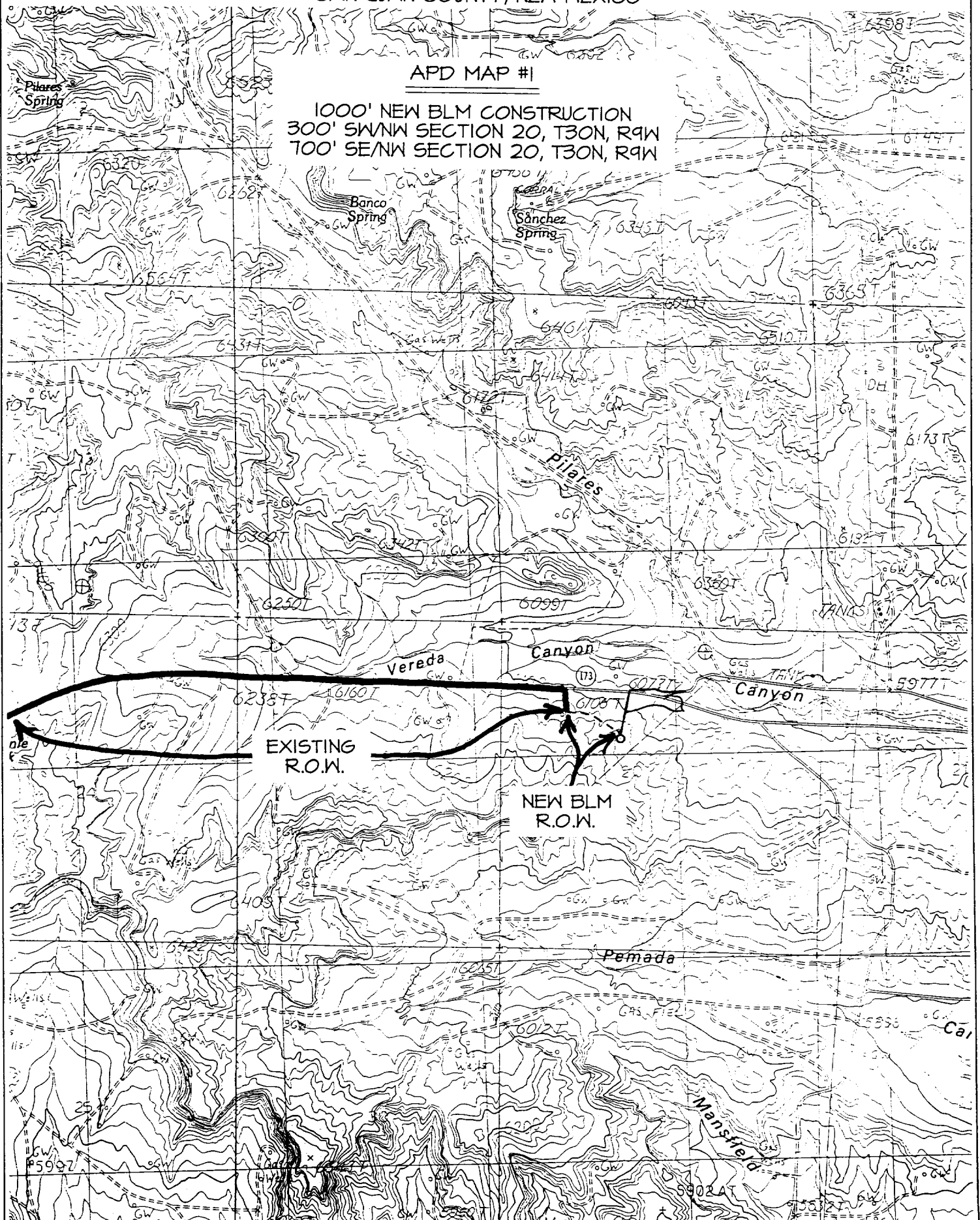
<div>16</div>	<div>17 OPERATOR CERTIFICATION</div> <p>I hereby certify that the information contained herein is true and complete to the best of my knowledge and belief</p> <p><i>Peggy Cole</i> Signature Peggy Cole Printed Name Regulatory Supervisor Title 8-1-00 Date</p>
	<div>18 SURVEYOR CERTIFICATION</div> <p>I hereby certify that the well location shown on this plat was plotted from field notes of actual surveys made by me or under my supervision, and that the same is true and correct to the best of my belief.</p> <p>JUNE 7, 2000 Date of Survey Signature and Seal of Professional Surveyor  Certificate No. 6857</p>

BURLINGTON RESOURCES OIL & GAS COMPANY FLORANCE B #1B

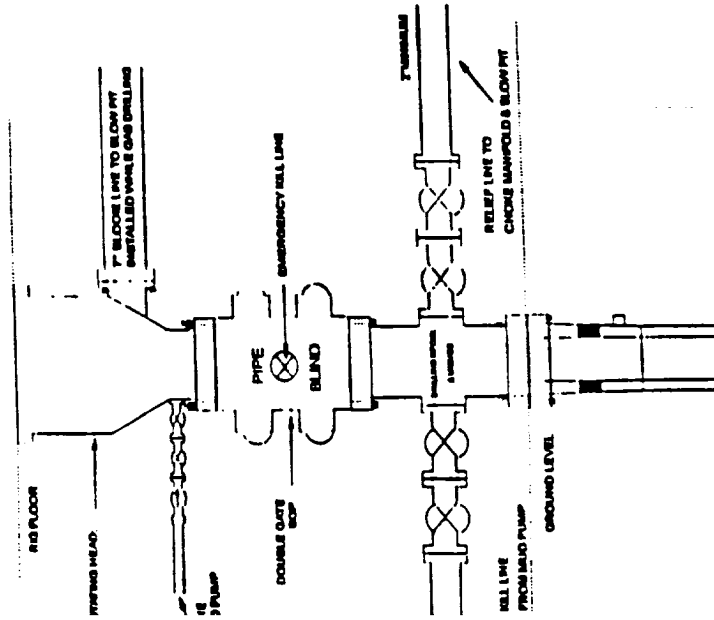
1895' FNL & 1950' FWL, SECTION 20, T30N, R9W, N.M.P.M.  
SAN JUAN COUNTY, NEW MEXICO

APD MAP #1

1000' NEW BLM CONSTRUCTION  
300' SW/NW SECTION 20, T30N, R9W  
700' SE/NW SECTION 20, T30N, R9W



# BOP Configuration 2M psi System

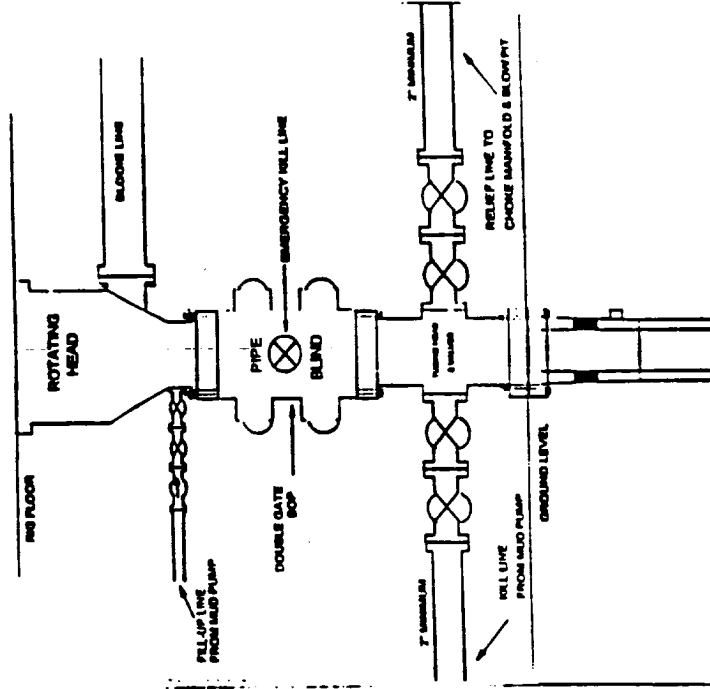


Minimum BOP Installation for Completion operations. 7 1/16" Bore (6" Nominal), 2,000 psi minimum working pressure double gate BOP to be equipped with blind and pipe rams.

FIGURE #1

# BURLINGTON RESOURCES

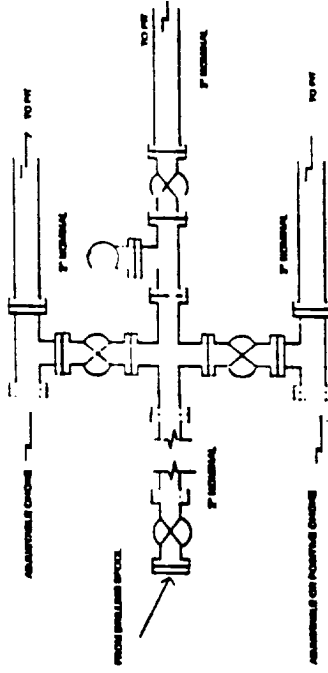
## BOP Configuration 2M psi System



Minimum BOP Installation for Completion operations. 7 1/16" Bore (6" Nominal), 2,000 psi minimum working pressure double gate BOP to be equipped with blind and pipe rams.

FIGURE #2

## Choke Manifold Configuration 2M System



Minimum choke manifold installation from surface to Total Depth. 2" minimum, 2000psi working pressure equipment with two chokes.

Figure #3