

UNITED STATES  
DEPARTMENT OF THE INTERIOR  
BUREAU OF LAND MANAGEMENT

FORM APPROVED  
OMB NO. 1004-0136  
Expires: November 30, 2000

APPLICATION FOR PERMIT TO DRILL OR REENTER

1a. Type of Work <input checked="" type="checkbox"/> DRILL <input type="checkbox"/> REENTER		5. Lease Serial No. SF-079004	
1b. Type of Well <input type="checkbox"/> Oil Well <input checked="" type="checkbox"/> Gas Well <input type="checkbox"/> Other <input checked="" type="checkbox"/> Single Zone <input type="checkbox"/> Multiple Zone		6. If Indian, Allottee or Tribe Name	
2. Name of Operator Phillips Petroleum Company		7. Unit or CA Agreement Name and No. San Juan 32-8 Unit	
3a. Address 5525 Highway 64, NBU 3004, Farmington, NM 87401		8. Lease Name and Well No. SJ 32-8 Unit #16A	
3b. Phone No. (include area code) 505-599-3454		9. API Well No. 30-045-30412	
4. Location of Well (Report location clearly and in accordance with any State requirements)* At surface Unit C, 155' FNL & 2460' FWL At proposed prod. zone Same as above		10. Field and Pool, or Exploratory Blanco Mesaverde	
11. Sec., T., R., M., or Blk. and Survey or Area C Section 15, T31N, R8W		12. County or Parish San Juan	
13. State NM		14. Distance in miles and direction from nearest town or post office* 7 miles north of Navajo Dam, NM	
15. Distance from proposed* location to nearest property or lease line, ft. (Also to nearest drg. unit line, if any) 155'	16. No. of Acres in lease 2560 acres	17. Spacing Unit dedicated to this well 320 W/2	
18. Distance from proposed location* to nearest well, drilling, completed, applied for, on this lease, ft.	19. Proposed Depth 6236'	20. BLM/BIA Bond No. on file ES0048	
21. Elevations (Show whether DF, KDB, RT, GL, etc.) 6599' GL	22. Approximate date work will start* 4th Qtr 2000	23. Estimated duration 20 days	

24. Attachments

The following, completed in accordance with the requirements of Onshore Oil and Gas Order No. 1, shall be attached to this form:

- |   |  |
|---|--|
| 1. Well plat certified by a registered surveyor.  | 4. Bond to cover the operations unless covered by an existing bond on file (see Item 20 above).    |
| 2. A Drilling Plan  | 5. Operator certification.   |
| 3. A Surface Use Plan (if the location is on National Forest System Lands, the SUPO shall be filed with the appropriate Forest Service Office). | 6. Such other site specific information and/or plans as may be required by the authorized officer. |

25. Signature <i>Patsy Clugston</i>	Name (Printed/Typed) Patsy Clugston	Date 10/27/00
Title Sr. Regulatory/Proration Clerk		
Approved by (Signautre) <i>/s/ Jim Lovato</i>	Name (Printed/Typed)	Date DEC 20 2000
Title Team Lead, Petroleum Management		
Office		

Application approval does not warrant or certify that the applicant holds legal or equitable title to those rights in the subject lease which would entitle the applicant to conduct operations thereon.  
Conditions of approval, if any, are attached.

Title 18 U.S.C. Section 1001 and Title 43 U.S.C. Section 1212, make it a crime for any person knowingly and willfully to make to any department or agency of the United States any false, fictitious or fraudulent statements or representations as to any matter within its jurisdiction.

\*(Instructions on Reverse)

This action is subject to technical and procedural review pursuant to 43 CFR 3165.3 and appeal pursuant to 43 CFR 3165.4.

DRILLING OPERATIONS AUTHORIZED ARE  
SUBJECT TO COMPLIANCE WITH ATTACHED  
"GENERAL REQUIREMENTS"

NM000

District I  
170 Box 1980, Hobbs, NM 88241-1980  
District II  
811 South First, Artesia, NM 88210  
District III  
1000 Rio Brazos Rd., Aztec, NM 87410  
District IV  
2040 South Pacheco, Santa Fe, NM 87505

State of New Mexico  
Energy, Minerals & Natural Resources Department

OIL CONSERVATION DIVISION  
2040 South Pacheco  
Santa Fe, NM 87505

Form C-102  
Revised October 18, 1994  
Instructions on back  
Submit to Appropriate District Office  
State Lease - 4 Copies  
Fee Lease - 3 Copies

☐ AMENDED REPORT

WELL LOCATION AND ACREAGE DEDICATION PLAT

1. All Number 30-05-30412		2. Pool Code 72319	3. Pool Name Blanco Mesaverde
4. Property Code 009261	5. Property Name SAN JUAN 32-8 UNIT		6. Well Number 16A
7. OGRID No. 017654	8. Operator Name PHILLIPS PETROLEUM COMPANY		9. Elevation 6599'

10. Surface Location

UI, or lot no.	Section	Township	Range	Lot Idn	Feet from the	North/South line	Feet from the	East/West line	County
C	15	31N	8W		155'	NORTH	2460'	WEST	SAN JUAN

11. Bottom Hole Location If Different From Surface

UI, or lot no.	Section	Township	Range	Lot Idn	Feet from the	North/South line	Feet from the	East/West line	County
C									

12. Dedicated Acres 320 W/2	13. Joint or Infill Y	14. Consolidation Code U	15. Order No.
--------------------------------	--------------------------	-----------------------------	---------------

NO ALLOWABLE WILL BE ASSIGNED TO THIS COMPLETION UNTIL ALL INTERESTS HAVE BEEN CONSOLIDATED OR A NON-STANDARD UNIT HAS BEEN APPROVED BY THE DIVISION

16 SF-079004 2560 acres N02°16'E 5191.56'	Section 15 2460' N89°28'W 5126.22'	17 OPERATOR CERTIFICATION I hereby certify that the information contained herein is true and complete to the best of my knowledge and belief.  Signature Patsy Clugston Printed Name Sr. Regulatory/Proration Clerk Title 10/27/00 Date

PHILLIPS PETROLEUM COMPANY

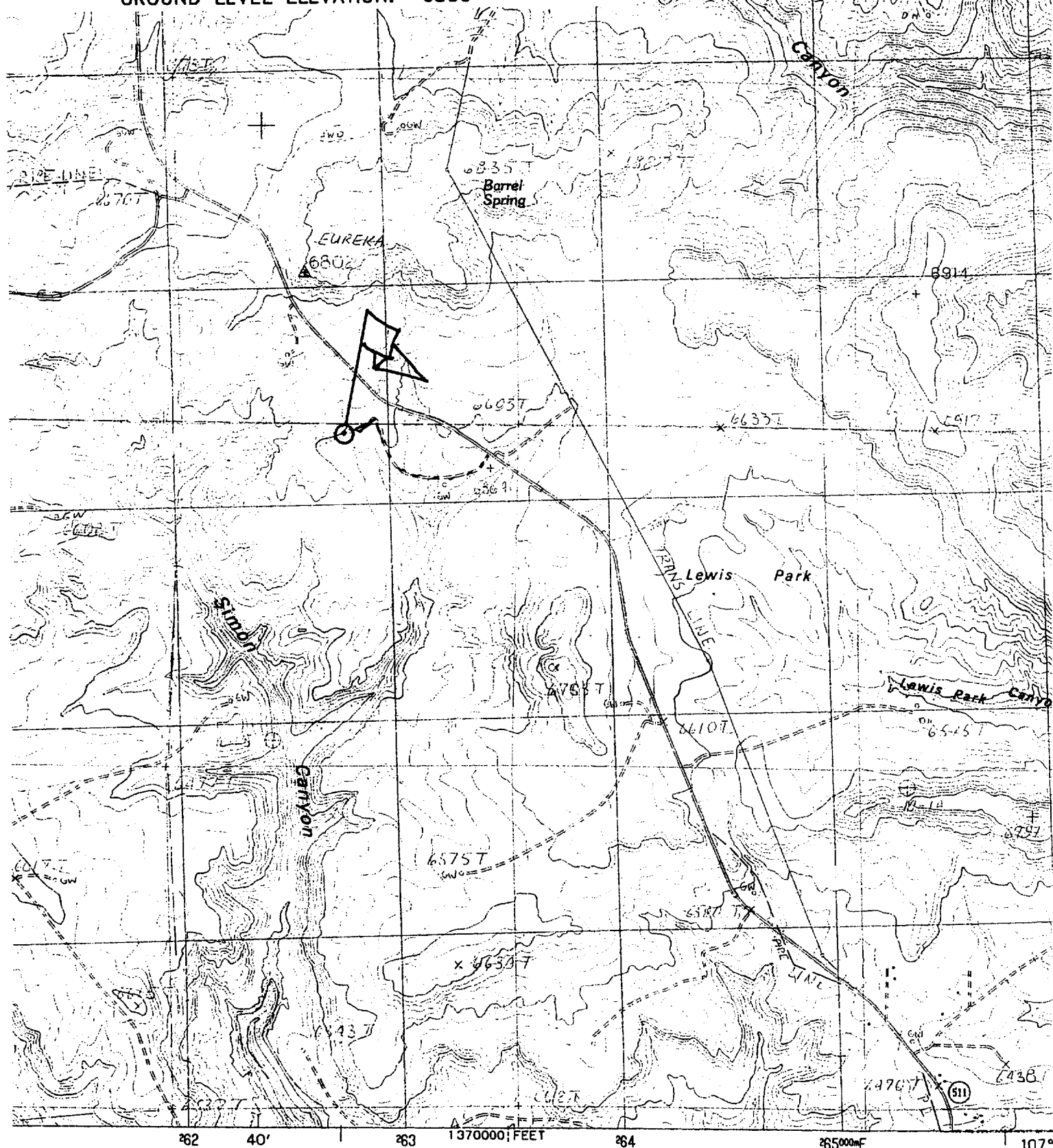
SAN JUAN 32-8 UNIT No. 16A

155' FNL, 2460' FWL

NW/4 SEC. 15, T-31-N, R-08-W, N.M.P.M.,

SAN JUAN COUNTY, NEW MEXICO

GROUND LEVEL ELEVATION: 6599'



NEW MEXICO

ANASTACIO SPRING QUADRANGLE

## PHILLIPS PETROLEUM COMPANY

WELL NAME: San Juan 32-8 #16A MV

### DRILLING PROGNOSIS

1. Location of Proposed Well: Unit C, 155' FNL & 2460' FWL  
Section 15, T31N, R8W

2. Unprepared Ground Elevation: @ 6599' (unprepared)

3. The geological name of the surface formation is San Jose.

4. Type of drilling tools will be rotary.

5. Proposed drilling depth is 6236'.

6. The estimated tops of important geologic markers are as follows:

<u>Nacimiento - 886'</u>	<u>Lewis Shale - 3686'</u>
<u>Ojo Alamo - 2271'</u>	<u>Cliff House Ss - 5416'</u>
<u>Kirtland Sh - 2376'</u>	<u>Menefee Fm. - 5466'</u>
<u>Fruitland Fm. - 3101'</u>	<u>Pt. Lookout - 5786'</u>
<u>Pictured Cliffs - 3466'</u>	<u>Mancos Sh - 6061'</u>

7. The estimated depths at which anticipated water, oil, gas or other mineral bearing formations are expected to be encountered are as follows:

Water:	<u>Ojo Alamo - 2271' - 2376'</u>
Gas & Water:	<u>Fruitland - 3101' - 3466'</u>
Gas:	<u>Mesaverde - 5416' - 6061'</u>

8. The proposed casing program is as follows:

Surface String: 9-5/8", 32.3#, H-40 @ 320'  
Intermediate String: 7", 20#, J/K-55 @ 3861'  
Production String: 4-1/2", 11.6#, I-80 @ 6236' (TD)

9. Cement Program:

Surface String: 158.5 sx Type III cement with 2% bwoc CaCl<sub>2</sub> + 1/4#/sx Cello-flake mixed at 14.5 ppg with a 1.41 ft<sup>3</sup>/sx yield w/46.5% H<sub>2</sub>O or sufficient to circulate to surface - 223 cf.

Note: Cement slurry calculations based on cement to surface with 140% excess hole volume.

Intermediate String: **Lead Cement:** 465.5 sx Type III cement (35:65) POZ with 5#/sx Gilsonite, 1/4#/sx Cello-flake, 6% bwoc gel (bentonite), 10#/sx CSE, 3% bwow KCL, 0.4% bwoc FL-25 mixed and 0.02#/sx Static Free mixed at 12.0 ppg with a yield of 2.37 ft<sup>3</sup>/sx – 1103 cf.

**Tail Cement:** 50 sx – Type III cement with 1/4#/sx Cello-flake and 1% CaCl<sub>2</sub> mixed at 14.5 ppg with a 1.40 Ft<sup>3</sup>/sx yield (70 cf).

In the event we encounter fluid loss during drilling operations, a contingency plan for cementing the intermediate casing may require a stage collar. Phillips cannot predict exact volumes. However the 1<sup>st</sup> stage will be CI H cement w/5#/sx Gilsonite, 0.25#/sx Cello-flake, 0.3% FL-25 & 2% CaCl<sub>2</sub> mixed at 15.2 ppg 1.28 yield. Stage 2 - lead slurry: 65 % Class H & 35% POZ w/6% Bentonite mixed at 12.6 ppg 1.79 cf/sx Tail Slurry - Class H w/2% CaCl<sub>2</sub> mixed at 15.6 ppg 1.20 yield. All attempt to be circulated to surface.

Production String

**Lead:** 166.5 sx Type III (35/65 POZ (Fly Ash) with 6% bwoc Bentonite, 10#/sx CSE, 0.2#/sx Static Free, 1% bwoc FL-52, 0.3% bwoc CD-32, 0.3% bwoc R-3 & 0.25#/sx Cello-Flake mixed at 12.3 ppg w/yield of 2.13 ft<sup>3</sup>/sx – 355 cf.

Note: The Production String casing cement is designed to cover openhole section (with 40% excess) and 100' inside the 7" shoe.

Note: Phillips Petroleum continually works to improve the cement slurries on our wells. BJ Services is currently trying to improve what we are using now and before we would use a new cement program it would have to have stronger properties than we are currently using.

Centralizer Program:

Surface: Total four (4) 1 @ 10' above shoe & top of 2<sup>nd</sup>, 4<sup>th</sup> & 6<sup>th</sup> joint

Intermediate: Total seven (7) – 10' above shoe, top of 1<sup>st</sup>, 2<sup>nd</sup>, 4<sup>th</sup>, 6<sup>th</sup>, & 8<sup>th</sup> jts & 1 jt. Above surface casing.

Production: None planned.

Turbulators: Total Three (3) – on intermediate casing at 1<sup>st</sup> jt. Below the Ojo Alamo and next 2 jts up.

10. The minimum specifications for pressure control equipment which are to be used, a schematic diagram thereof showing sizes, pressure ratings (or) API series and the testing procedure and testing frequency are enclosed within the APD packet.

# ATTACHMENT 1

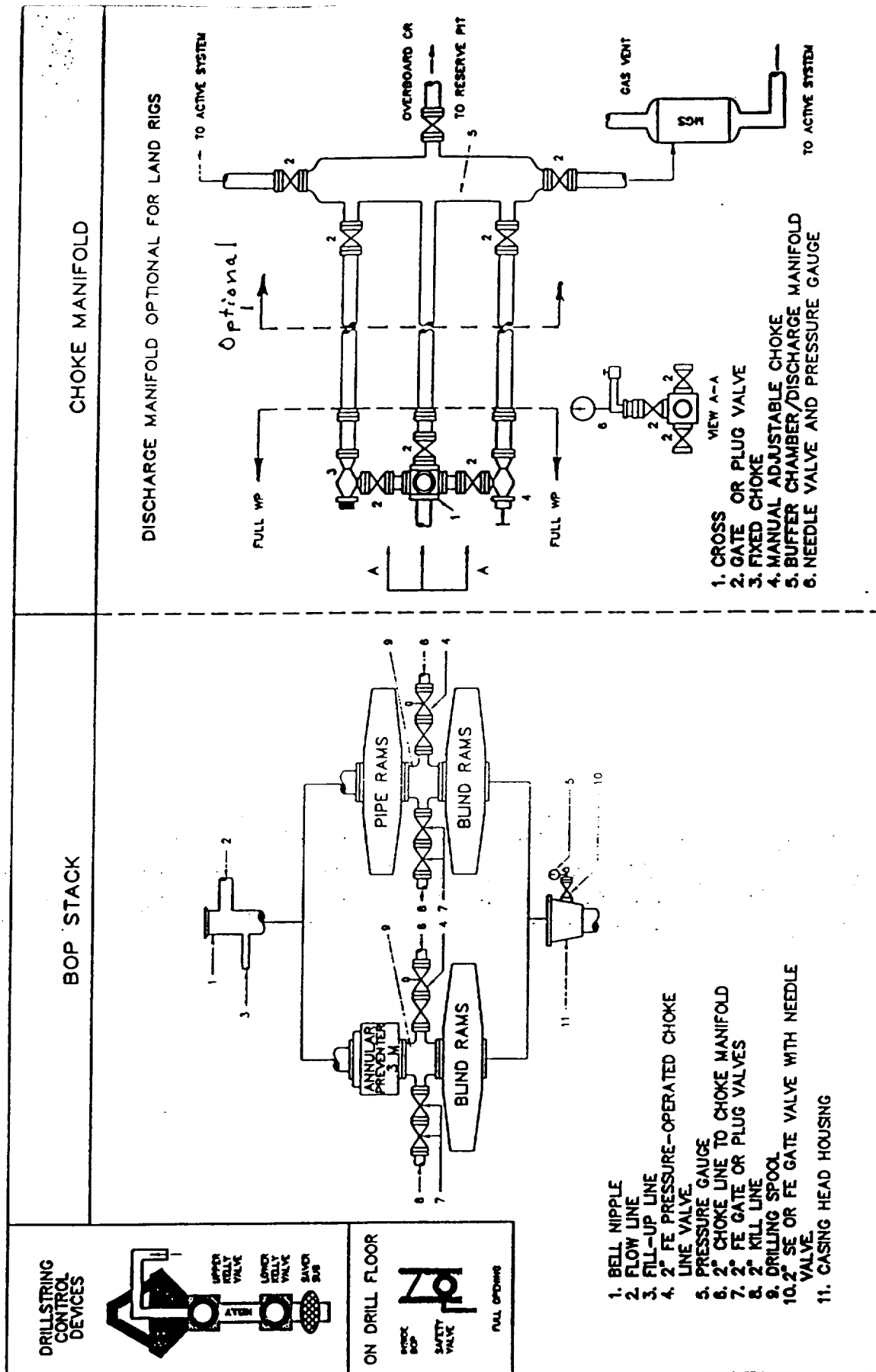


Fig. 2.4. Class 2 BOP and Choke Manifold.