

UNITED STATES
DEPARTMENT OF THE INTERIOR
BUREAU OF LAND MANAGEMENT

APPLICATION FOR PERMIT TO DRILL, DEEPEN, OR PLUG BACK

1a. Type of Work DRILL	5. Lease Number SF-076934-A Unit Reporting Number	
1b. Type of Well GAS	6. If Indian, All. or Tribe	
2. Operator BURLINGTON RESOURCES Oil & Gas Company	7. Unit Agreement Name	
3. Address & Phone No. of Operator PO Box 4289, Farmington, NM 87499 (505) 326-9700	8. Farm or Lease Name Mansfield 9. Well Number #1B	
4. Location of Well 1005' FNL, 1770' FWL Latitude 36° 47.2' N, Longitude 107° 48.4' W	10. Field, Pool, Wildcat Blanco Mesaverde 11. Sec., Twn, Rge, Mer. (NMPM) C Sec. 29, T-30-N, R-9-W API # 30-045-30414	
14. Distance in Miles from Nearest Town 15.9 miles to Aztec P.O.	12. County San Juan	13. State NM
15. Distance from Proposed Location to Nearest Property or Lease Line 1005'		
16. Acres in Lease	17. Acres Assigned to Well 320 W/2	
18. Distance from Proposed Location to Nearest Well, Drig, Compl, or Applied for on this Lease 121'		
19. Proposed Depth 5301'	20. Rotary or Cable Tools Rotary	
21. Elevations (DF, FT, GR, Etc.) 6019' GR	22. Approx. Date Work will Start	
23. Proposed Casing and Cementing Program See Operations Plan attached		
24. Authorized by: <u>[Signature]</u> Regulatory/Compliance Supervisor	Date <u>10-9-00</u>	

PERMIT NO. _____ APPROVAL DATE _____

APPROVED BY _____ TITLE _____ DATE _____

Archaeological Report to be submitted

Threatened and Endangered Species Report to be submitted

NOTE: This format is issued in lieu of U.S. BLM Form 3160-3

Title 18 U.S.C. Section 1001, makes it a crime for any person knowingly and willfully to make to any department or agency of the United States any false, fictitious or fraudulent statements or presentations as to any matter within its jurisdiction.

DISTRICT I
P.O. Box 1980, Hobbs, N.M. 88241-1980

DISTRICT II
O. Drawer DD, Artesia, N.M. 88211-0719

DISTRICT III
1000 Rio Brazos Rd., Aztec, N.M. 87410

DISTRICT IV
PO Box 2088, Santa Fe, NM 87504-2088

State of New Mexico
Energy, Minerals & Natural Resources Department

OIL CONSERVATION DIVISION

P.O. Box 2088
Santa Fe, NM 87504-2088

Form C-102
Revised February 21, 1994

Instructions on back
Submit to Appropriate District Office
State Lease - 4 Copies
Fee Lease - 3 Copies

☐ AMENDED REPORT

WELL LOCATION AND ACREAGE DEDICATION PLAT

¹ API Number 30-045-30414		² Pool Code 72319	³ Pool Name Blanco Mesaverde
⁴ Property Code 7284	⁵ Property Name MANSFIELD		⁶ Well Number 1B
⁷ OGRID No. 14538	⁸ Operator Name BURLINGTON RESOURCES OIL & GAS INC.		⁹ Elevation 6019'

¹⁰ Surface Location

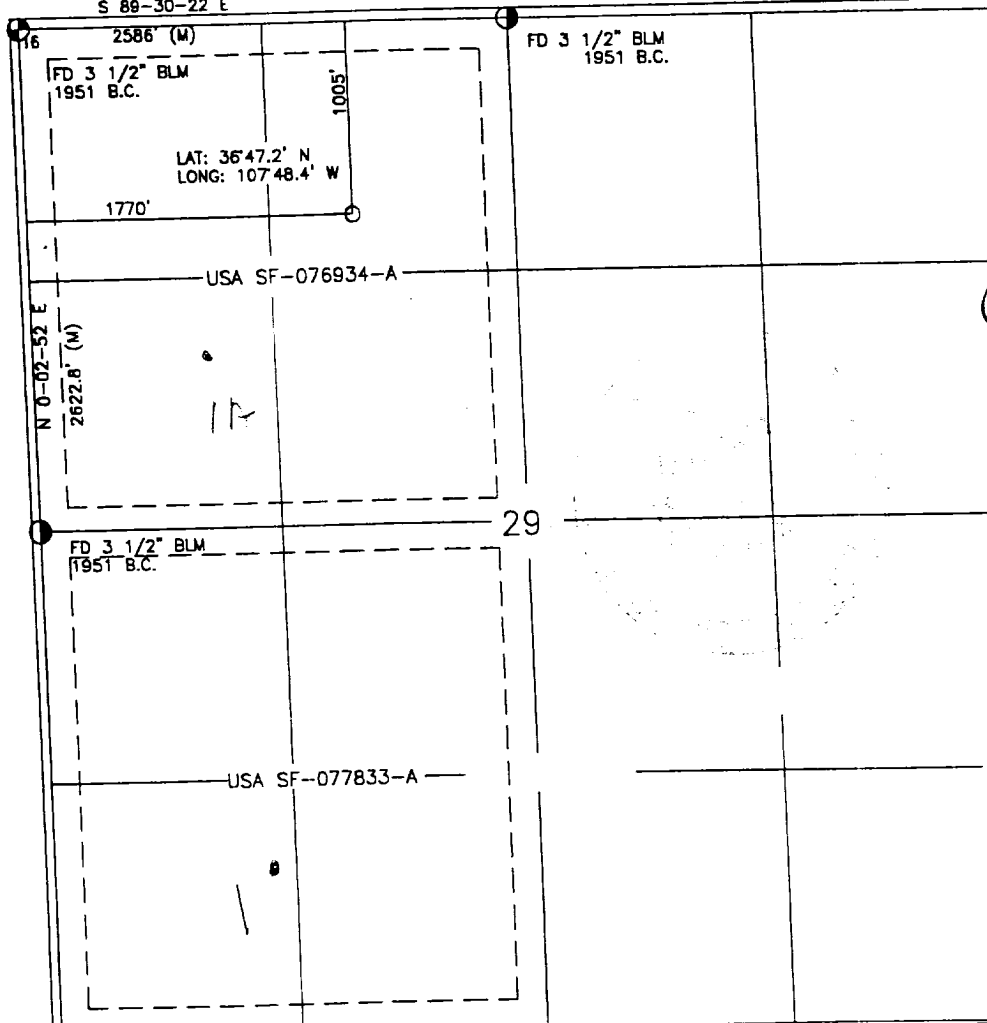
UL or lot no.	Section	Township	Range	Lot Idn	Feet from the	North/South line	Feet from the	East/West line	County
C	29	30-N	9-W		1005	NORTH	1770	WEST	SAN JUAN

¹¹ Bottom Hole Location If Different From Surface

UL or lot no.	Section	Township	Range	Lot Idn	Feet from the	North/South line	Feet from the	East/West line	County
¹² Dedicated Acres W/320		¹³ Joint or Infill		¹⁴ Consolidation Code		¹⁵ Order No.			

NO ALLOWABLE WILL BE ASSIGNED TO THIS COMPLETION UNTIL ALL INTERESTS HAVE BEEN CONSOLIDATED
OR A NON-STANDARD UNIT HAS BEEN APPROVED BY THE DIVISION

S 89-30-22 E



¹⁷ OPERATOR CERTIFICATION

I hereby certify that the information contained herein is true and complete to the best of my knowledge and belief

Signature

Peggy Cole

Printed Name

Regulatory Supervisor

Title

Date

10-9-00

¹⁸ SURVEYOR CERTIFICATION

I hereby certify that the well location shown on this plat was plotted from field notes of actual surveys made by me or under my supervision and that the same is true and correct to the best of my knowledge and belief

Date of Survey

Signature and Seal of

Professional Surveyor

8894

Certificate Number

NO NEW CONSTRUCTION
NE/NW SECTION 29, T30N, R9W

UNITED STATES
DEPARTMENT OF THE INTERIOR
BUREAU OF LAND MANAGEMENT

Sundry Notices and Reports on Wells

1. Type of Well

GAS

2. Name of Operator

BURLINGTON
RESOURCES

OIL & GAS COMPANY

3. Address & Phone No. of Operator

PO Box 4289, Farmington, NM 87499 (505) 326-9700

4. Location of Well, Footage, Sec., T, R, M

1005' FNL, 1770' FWL, Sec.29, T-30-N, R-9-W, NMPM

5. Lease Number

SF-076934-A

6. If Indian, All. or

Tribe Name

7. Unit Agreement Name

8. Well Name & Number

Mansfield #1B

9. API Well No.

30-045- 30411

10. Field and Pool

Blanco Mesaverde

11. County and State

San Juan Co, NM

12. CHECK APPROPRIATE BOX TO INDICATE NATURE OF NOTICE, REPORT, OTHER DATA

Type of Submission

☒ Notice of Intent☐ Subsequent Report☐ Final Abandonment

Type of Action

☐ Abandonment☐ Recompletion☐ Plugging Back☐ Casing Repair☐ Altering Casing☐ Other -☒ Change of Plans☐ New Construction☐ Non-Routine Fracturing☐ Water Shut off☐ Conversion to Injection

13. Describe Proposed or Completed Operations

It is intended to alter the casing depths and cement of the subject well.

Revisions:

Mud Program:

Interval	Type	Weight	Fluid Loss
0-200'	Spud	8.4-9.0	No control
200-3069'	LSND	8.4-9.0	No control
3069-5301'	Air/Mist	n/a	n/a

Casing Program:

Hole Size	Depth Interval	Casing Size	Weight	Grade
12 1/4"	0-200'	9 5/8"	32.3#	H-40
8 3/4"	0-3069'	7"	20.0#	J-55
6 1/4"	2969-5301'	4 1/2"	10.5#	J-55

Cementing Program:

9 5/8" surface casing - 159 sx Class "B" cement with 0.25 pps Flocele and 3% calcium chloride (188 cu.ft. of slurry, 200% excess to circulate to surface).

7" intermediate casing - lead w/313 sx 50/50 Class "G"/Trinity Light with 2.5% sodium metasilicate, 2% calcium chloride, 10 pps Gilsonite, 0.5 pps Flocele. Tail with 90 sx Class "G" 50/50 poz w/2% gel, 2% calcium chloride, 5 pps Gilsonite, 0.1% antifoam and 0.25 pps Flocele (923 cu.ft. of slurry, 100% excess to circulate to surface).

7" intermediate casing alternative two stage: Stage collar at 2025'. First stage: cement w/245 sx 50/50 Class "G" poz w/2% gel, 2% calcium chloride, 5 pps Gilsonite, 0.1% antifoam and 0.25 pps Flocele. Second stage: w/236 sx 50/50 Class "G"/Trinity Light with 2.5% sodium metasilicate, 2% calcium chloride, 10 pps Gilsonite, 0.5 pps Flocele (923 cu.ft. of slurry, 100% excess to circulate to surface).

4 1/2" production liner - cement with 233 sx Class "G" 50/50 poz w/4.5% gel, 0.25 pps Flocele, 5 pps Gilsonite, 0.25% fluid loss, 0.1% retardant (335 cu.ft., 50% excess to circulate liner).

14. I hereby certify that the foregoing is true and correct.

Signed

Title Regulatory Supervisor Date 11/8/00

TLW

(This space for Federal or State Office use)

APPROVED BY

/s/ Leo C...

Title

Date

APR - 3

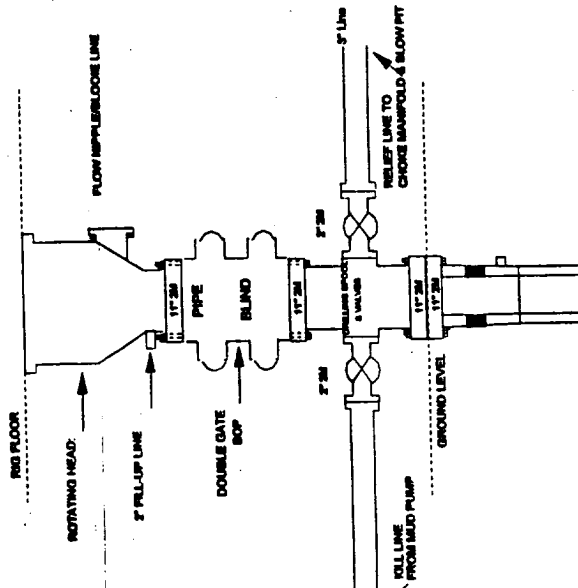
CONDITION OF APPROVAL, if any:

Title 18 U.S.C. Section 1001, makes it a crime for any person knowingly and willfully to make to any department or agency of the United States any false, fictitious or fraudulent statements or representations as to any matter within its jurisdiction.

Burlington Resources

Drilling Rig

2000 psi System

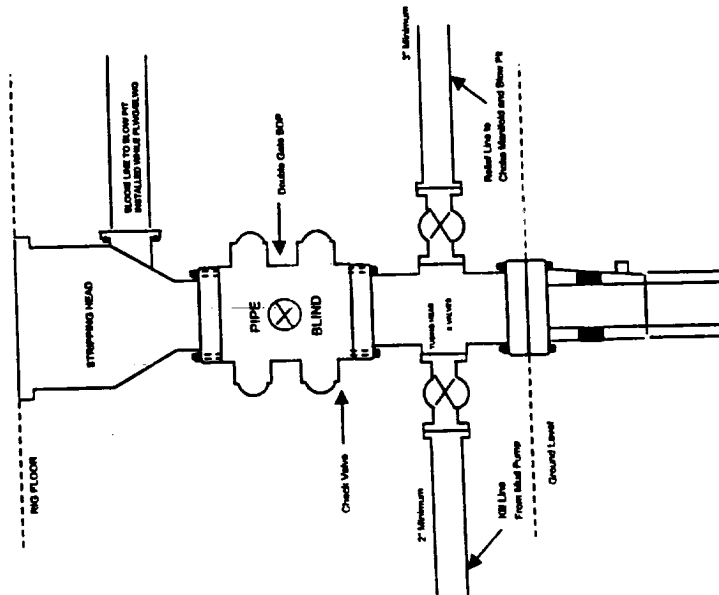


BOP Installation from Surface Casing Point to Total Depth. 11" Bore 10" Nominal. 2000 psi working pressure double gate BOP to be equipped with blind rams and pipe rams. A stripping head on top of ram preventers. All BOP equipment is 2,000 psi working pressure

Figure #1

BURLINGTON RESOURCES

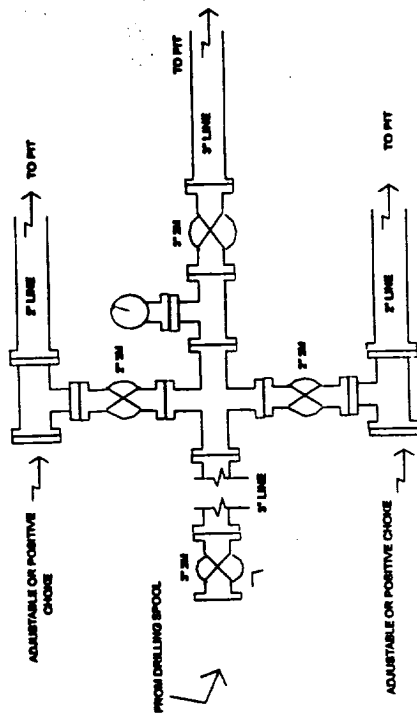
Completion/Workover Rig BOP Configuration 2,000 psi System



Minimum BOP Installation for all Completion/Workover Operations. 7-1/16" bore, 2000 psi minimum working pressure double gate BOP to be equipped with blind and pipe rams. A stripping head to be installed on the top of the BOP. All equipment is 2000 psi working pressure or greater.

Figure #2

Drilling Rig Choke Manifold Configuration 2000 psi System



Choke manifold installation from Surface Casing Point to Total Depth. 2,000psi working pressure equipment with two chokes.

Figure #3