

District I
PO Box 1980, Hobbs, NM 88241-1980
District II
811 South First, Artesia, NM 88210
District III
1000 Rio Brazos Rd., Aztec, NM 87410
District IV
2040 South Pacheco, Santa Fe, NM 87505

State of New Mexico
Energy, Minerals & Natural Resources Department

OIL CONSERVATION DIVISION

2040 South Pacheco
Santa Fe, NM 87505

Form C-101

Revised October 18, 1994

Instructions on back

Submit to Appropriate District Office

State Lease - 6 Copies

Fee Lease - 5 Copies



AMENDED REPORT

APPLICATION FOR PERMIT TO DRILL, RE-ENTER, DEEPEN, PLUGBACK, OR ADD A ZONE

¹ Operator Name and Address. Merrion Oil & Gas Corporation 610 Reilly Avenue Farmington, New Mexico 87401		² OGRID Number 014634
		³ API Number 30 - 045 - 30456
⁴ Property Code 25175	⁵ Property Name Katy	⁶ Well No. 2

⁷ Surface Location

UL or lot no.	Section	Township	Range	Lot Idn	Feet from the	North/South line	Feet from the	East/West line	County
P	26	30N	12W	se se	1199'	South	1263'	East	San Juan

⁸ Proposed Bottom Hole Location If Different From Surface

UL or lot no.	Section	Township	Range	Lot Idn	Feet from the	North/South line	Feet from the	East/West line	County
⁹ Proposed Pool Aztec Pictured Cliffs					¹⁰ Proposed Pool 2				

¹¹ Work Type Code N -	¹² Well Type Code G -	¹³ Cable/Rotary Rotary	¹⁴ Lease Type Code P -	¹⁵ Ground Level Elevation 5516' 5686' - call
¹⁶ Multiple No	¹⁷ Proposed Depth 2062' KB -	¹⁸ Formation Pictured Cliffs	¹⁹ Contractor L&B Speed Drill	²⁰ Spud Date April, 2001

²¹ Proposed Casing and Cement Program

Hole Size	Casing Size	Casing weight/foot	Setting Depth	Sacks of Cement	Estimated TOC
8 3/4"	7" J55	23 ppf	~120' KB	~30 sx (35 cuft)	Surface -
6 1/2"	4 1/2" J55	10.5 ppf	~2062' KB -	~175 sx (265 cuft)	Surface -

²² Describe the proposed program. If this application is to DEEPEN or PLUG BACK give the data on the present productive zone and proposed new productive zone. Describe the blowout prevention program, if any. Use additional sheets if necessary.

Merrion Oil & Gas proposes to drill 8 3/4" hole with native mud to approx. 120' KB and set 7" 23# J55 surface casing, cement to surface with ~30 sx 'B' w/ 2% CaCl₂ (35 ft³). Will drill 6 1/2" hole to TD @ approx. 1885' KB with low solids non-dispersed gel mud system. Run open hole surveys. If appears productive, will set 4 1/2" 10.5 ppf J55 production casing from TD to surface. Will cement with 120 sx 'B' w/ 2% SMS (247 ft³) and tail in with 55 sx 'B' (64 ft³) cement to fill from total depth to surface. Top of cement should circulate to surface (will adjust volumes based upon caliper log). If cement does not reach surface, a temperature log or cement bond log will be run to determine top of cement.

Will test Pictured Cliffs through perforated casing. Will fracture stimulate and put on for production test.

Drilling operations below surface casing will be conducted with a bag type BOP in place, minimum working pressure 1000 psig.

Merrion Oil & Gas owns the surface at the proposed well site.

Formation tops: Nacimiento - Surface, Ojo Alamo - 526', Kirtland - 676', Fruitland - 1691', Fruitland - 1874', Pictured Cliffs 1912'.

²³ I hereby certify that the information given above is true and complete to the best of my knowledge and belief.

Signature:

Printed name:

Steven S. Dunn

Title:

Drilling & Production Manager

Date:

December 21, 2000

Phone: 505-327-9801

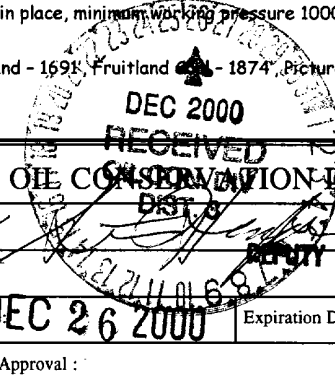
Approved by:

Title:

Approval Date:

Conditions of Approval:

Attached ☐



DEPUTY OIL & GAS INSPECTOR, DIST. 8

Expiration Date:

DEC 26 2001

State of New Mexico
Energy, Minerals & Mining Resources Department

Form C - 102

OIL CONSERVATION DIVISION
2040 South Pacheco
Santa Fe, NM 87505

☐ AMENDED REPORT

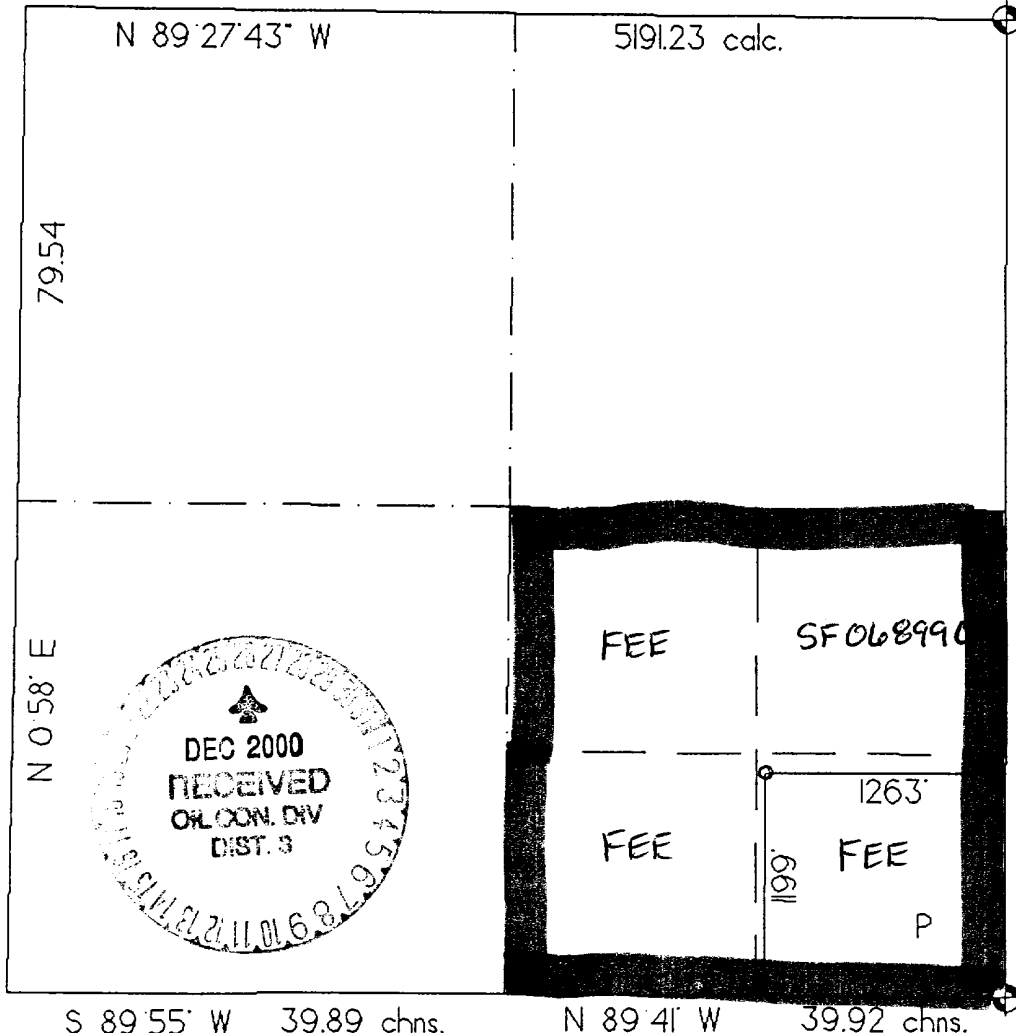
WELL LOCATION AND ACREAGE DEDICATION PLAT

APA Number 30-045-30456	Pool Code 71280 -	Pool Name AZTEC PICTURED CLIFFS -
Property Code 25775	Property Name Katy	Well Number 2
OGRD No. 014634	Operator Name MERRION OIL & GAS	Elevation 5686'

Surface Location									
UL or Lot P	Sec. 26	Twp. 30 N.	Rge. 12 W.	Lot Idn.	Feet from > 1199'	North/South NORTH	Feet from > 1263'	East/West EAST	County SAN JUAN

Bottom Hole Location If Different From Surface									
UL or Lot	Sec.	Twp.	Rge.	Lot Idn.	Feet from >	North/South	Feet from >	East/West	County
Dedication 160	Joint ? Y	Consolidation C	Order No. COMMUNITIZATION IN PROGRESS						

NO ALLOWABLE WILL ASSIGNED TO THIS COMPLETION UNTIL ALL INTERESTS HAVE BEEN CONSOLIDATED
OR A NON-STANDARD UNIT HAS BEEN APPROVED BY THE DIVISION



OPERATOR CERTIFICATION I hereby certify that the information contained herein is true and complete to the best of my knowledge and belief. Signature: <i>Steven S. Dunn</i>	
Printed Name	STEVEN S. DUNN
Title	DIREC. & PROP. MGR.
Date	12-21-00
SURVEYOR CERTIFICATION I hereby certify that the well location on this plat was plotted from field notes of actual surveys made by me or under my supervision, and that the same is true and correct to the best of my belief. Date of Survey: 8 November 2000 Signature and Professional Surveyor Seal: <i>Gerard G. Woodpleston</i> 6844 REGISTERED LAND SURVEYOR	