

District I
1625 N. French Dr., Hobbs, NM 88240
District II
811 South First, Artesia, NM 88210
District III
1000 Rio Brazos Road, Aztec, NM 87410
District IV
2040 South Pacheco, Santa Fe, NM 87505

State of New Mexico
Energy Minerals and Natural Resources

Form C-101
Revised March 17, 1999

Oil Conservation Division
2040 South Pacheco
Santa Fe, NM 87505

Submit to appropriate District Office
State Lease - 6 Copies
Fee Lease - 5 Copies

☐ AMENDED REPORT

APPLICATION FOR PERMIT TO DRILL, RE-ENTER, DEEPEN, PLUGBACK, OR ADD A ZONE

¹ Operator Name and Address Merrion Oil & Gas Corporation		² OGRID Number 014634
³ Property Code 27329	⁵ Property Name Bartens Park Com	⁴ API Number 30 - 045-30493
		⁶ Well No. 1

⁷ Surface Location									
UL or lot no. I	Section 36	Township 30N	Range 13W	Lot Idn ne se	Feet from the 2479'	North/South line South	Feet from the 1247'	East/West line East	County San Juan

⁸ Proposed Bottom Hole Location If Different From Surface									
UL or lot no.	Section	Township	Range	Lot Idn	Feet from the	North/South line	Feet from the	East/West line	County
⁹ Proposed Pool 1 Fulcher Kutz PC						¹⁰ Proposed Pool 2			

¹¹ Work Type Code N	¹² Well Type Code G	¹³ Cable/Rotary R	¹⁴ Lease Type Code S	¹⁵ Ground Level Elevation 5560'
¹⁶ Multiple No	¹⁷ Proposed Depth 1700'	¹⁸ Formation Pictured Cliffs	¹⁹ Contractor L&B Speed Drill	²⁰ Spud Date When Permitted

²¹ Proposed Casing and Cement Program					
Hole Size	Casing Size	Casing weight/foot	Setting Depth	Sacks of Cement	Estimated TOC
8 1/2"	7"	23 ppf	120'	50 sx	Surface
6 1/2"	4 1/2"	10.5 ppf	1700'	160 sx	Surface

²² Describe the proposed program. If this application is to DEEPEN or PLUG BACK, give the data on the present productive zone and proposed new productive zone. Describe the blowout prevention program, if any. Use additional sheets if necessary.

Merrion proposes to drill 8 1/2" surface hole with native mud to approx. 120' and set 7" 23 ppf J55 surface casing, cement to surface with ~50 sx 'H' w/ 2% CaCl₂ (59 cuft). Will drill 6 1/2" hole to TD @ approx. 1700' KB with low solids non-dispersed mud. Run open hole surveys. Will set 4 1/2" 10.5 ppf J55 production casing from TD to surface. Will cement with ~100 sx 'B' 2% SMS (206 cuft) and tail in with 60 sx 'B' 2% Gel (73 cuft) cement to fill from total depth to surface (Will adjust volumes based upon caliper log). If cement does not reach surface, a temperature log or cement-bond log will be run to find top of cement.

Will test Pictured Cliffs through perforated casing. Will fracture stimulate and put on production test. Drilling operations below surface casing will be conducted with a bag-type BOP in place, minimum working-pressure - 1000 psig.

This well is located within the city limits of Farmington and a city special use permit and Oil & Gas permit will be obtained prior to commencing drilling.

This well will be drilled on the Pinon Hills Com 1 existing Dakota well location.

Tops: Ojo Alamo - Surface, Kirtland - 13', Fruitland - 1105', Pictured Cliffs - 1478'.

²³ I hereby certify that the information given above is true and complete to the best of my knowledge and belief.

Signature:

Printed name: **Steven S. Dunn**

Title: **Drilling & Production Manager**

Date: **January 18, 2001**

Phone: **505.327.9801**

OIL CONSERVATION DIVISION

Approved by:

Title: **DEPUTY OIL & GAS INSPECTOR, DIST. #1**

Approval Date: **JAN 18 2001**

Expiration Date: **JAN 18 2002**

Conditions of Approval:

Attached ☐

APPROVED FOR NSL

State of New Mexico
Energy, Minerals & Mining Resources Department

Form C - 102

OIL CONSERVATION DIVISION
2040 South Pacheco
Santa Fe, NM 87505

☐ AMENDED REPORT

WELL LOCATION AND ACREAGE DEDICATION PLAT

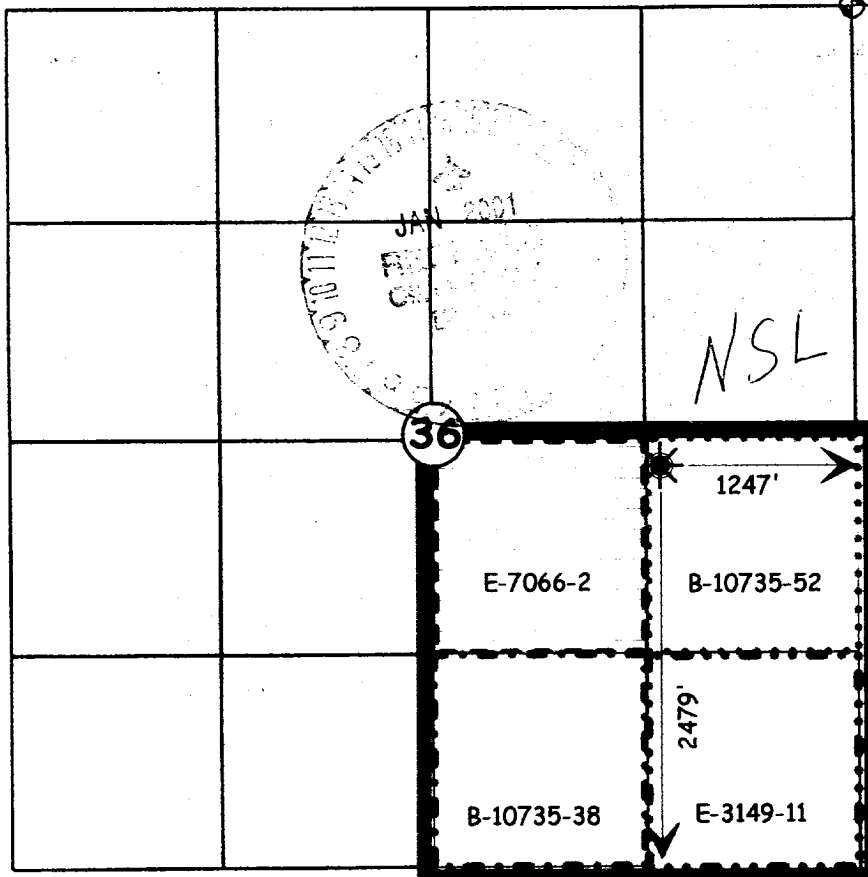
APA Number 30-045-30493	Pool Code 77200	Pool Name Fulcher Kutz Pictured Cliffs
Property Code 27329	Property Name BARTENS PARK COM	Well Number 1
OGRD No. 014634	Operator Name MERRION OIL & GAS	Elevation 5560'

Surface Location									
UL or Lot	Sec.	Twp.	Rge.	Lot Id.	Feet from	North/South	Feet from	East/West	County
1	36	30 N.	13 W.		2479	SOUTH	1247	EAST	SAN JUAN

Bottom Hole Location if Different From Surface									
UL or Lot	Sec.	Twp.	Rge.	Lot Id.	Feet from	North/South	Feet from	East/West	County

Dedication 160 ac	Joint ? Y	Consolidation C	Order No. Communitization in Progress
-----------------------------	---------------------	---------------------------	---

NO ALLOWABLE WILL ASSIGNED TO THIS COMPLETION UNTIL ALL INTERESTS HAVE BEEN CONSOLIDATED
OR A NON-STANDARD UNIT HAS BEEN APPROVED BY THE DIVISION



OPERATOR CERTIFICATION	
I hereby certify that the information contained herein is true and complete to the best of my knowledge and belief.	
Signature	<i>Steven S. Dunn</i>
Printed Name	Steven S. Dunn
Title	Drilling & Production Manager
Date	Jan 18, 2001
SURVEYOR CERTIFICATION	
I hereby certify that the well location on this plat was plotted from field notes of actual surveys made by me or under my supervision, and that the same is true and correct to the best of my belief.	
Date of Survey	8 November 2000
Signature	<i>[Signature]</i>
Professional Seal	6844