

DISTRICT I
1625 N. French Dr., Hobbs, NM 88240

DISTRICT II
811 South Frist, Artesia, NM 88210

DISTRICT III
1000 Rio Brazos Rd., Aztec, NM 87410

DISTRICT IV
2040 South Pacheco, Santa Fe, NM 87505

State of New Mexico
Energy, Minerals and Natural Resources

OIL CONSERVATION DIVISION

2040 South Pacheco
Santa Fe, NM 87505

Form C-10

Revised March 25, 1999

Instructions on back

Submit to Appropriate District Office

State Lease - 6 Copie

Fee Lease - 5 Copie

☐ AMENDED REPORT

APPLICATION FOR PERMIT TO DRILL, RE-ENTER, DEEPEN, PLUGBACK, OR ADD A ZONE

¹ Operator Name and Address Four Star Oil and Gas Co. 3300 N. Butler Ave, Ste100 Farmington NM 87401			² OGRID Number 131494
⁴ Property Code 17713	⁵ Property Name NEW MEXICO COM C		³ API Number 30-015-30507 ⁶ Well No. 1-B

⁷ Surface Location									
UI or lot no	Section	Township	Range	Lot.Idn	Feet From The	North/South Line	Feet From The	East/West Line	County
L	36	T30N	R10W		1515	SOUTH	660	WEST	SAN JUAN

⁸ Proposed Bottom Hole Location If Different From Surface									
UI or lot no	Section	Township	Range	Lot.Idn	Feet From The	North/South Line	Feet From The	East/West Line	County
⁹ Proposed Pool 1 BLANCO MESA VERDE									
¹⁰ Proposed Pool 2									

¹¹ Work Type Code N	¹² WellType Code G	¹³ Rotary or C.T. R	¹⁴ Lease Type Code S	¹⁵ Ground Level Elevation 5939' GR -
¹⁶ Multiple N	¹⁷ Proposed Depth 4950'	¹⁸ Formation MESA VERDE	¹⁹ Contractor BEAR CAT	²⁰ Spud Date 6/15/01

²¹ Proposed Casing and Cement Program					
SIZE OF HOLE	SIZE OF CASING	WEIGHT PER FOOT	SETTING DEPTH	SACKS OF CEMENT	EST. TOP
12-1/4"	8-5/8"	24#	350'	260 SXS	SURFACE
7-7/8"	4-1/2"	11.6#	4950' -	550 SXS	SURFACE

²² Describe the proposed program. If this application is to DEEPEN or PLUG BACK give the data on the present productive zone and proposed new productive zone.
Describe the blowout prevention program, if any. Use additional sheets if necessary.

22 FOUR STAR OIL AND GAS CO. PROPOSES TO DRILL THIS DEVELOPMENT WELL TO A DEPTH OF 4950'. THIS WELL WILL TEST THE PRODUCTIVITY

23 OF THE MESA VERDE FORMATION. IF THE WELL IS UNPRODUCTIVE, IT WILL BE PLUGGED AND ABANDONED AS PER STATE REQUIREMENTS.

24

25 BOND COVERAGE FOR THIS WELL IS PROVIDED BY BOND NO. K02907914-C4073(NATION WIDE BLM BOND)& BOND NO. K02907914-F4072

26 (NATION WIDE BIA BOND)

27

28 A THREATENED -ENDANGERED SPECIES SURVEY AND ARCHAEOLOGICAL SURVEY WERE PERFORMED AS REQUIRED.

²³ I hereby certify that the rules and regulations of the Oil Conservation Division have been complied with and that the information given above is true and complete to the best of my knowledge and belief.

Signature Arthur D. Archibegue

Printed Name Arthur D. Archibegue

Title Eng. Assistant

Date 1/15/01

Telephone 325-4397

OIL CONSERVATION DIVISION	
Approved By: <u>[Signature]</u>	
Title: <u>DEPUTY OIL & GAS INSPECTOR, DIST. #1</u>	
Approval Date: <u>JAN 22 2001</u>	Expiration Date: <u>JAN 22 2002</u>
Conditions of Approval: Attached	

Instructions on back
Submit to Appropriate District Office
State Lease - 4 Copies
Fee Lease - 3 Copies

OIL CONSERVATION DIVISION
PO Box 2088
Santa Fe, NM 87504-2088

District IV
PO Box 2088, Santa Fe, NM 87504-2088

☐ AMENDED REPORT

WELL LOCATION AND ACREAGE DEDICATION PLAT

*API Number 30-045-30507		*Pool Code 72319 -	*Pool Name BLANCO MESAVERDE -	
*Property Code 17713	*Property Name NEW MEXICO COM C			*Well Number 1B
*OGRID No. 131994	*Operator Name FOUR STAR OIL & GAS COMPANY			*Elevation 5939 -

¹⁰ Surface Location

UL or lot no.	Section	Township	Range	Lot Idn	Feet from the	North/South line	Feet from the	East/West line	County
L	36	30N	10W		1515	SOUTH	660	WEST	SAN JUAN

¹¹Bottom Hole Location If Different From Surface

UL or lot no.	Section	Township	Range	Lot Idn	Feet from the	North/South line	Feet from the	East/West line	County
---------------	---------	----------	-------	---------	---------------	------------------	---------------	----------------	--------

12 Dedicated Acres 320 1/2	13 Joint or Infill	14 Consolidation Code	15 Order No
-------------------------------	--------------------	-----------------------	-------------

NO ALLOWABLE WILL BE ASSIGNED TO THIS COMPLETION UNTIL ALL INTERESTS HAVE BEEN CONSOLIDATED
OR A NON-STANDARD UNIT HAS BEEN APPROVED BY THE DIVISION

15

5283.96'

660'

1515'

5246.68'

5290.56'

36

17 OPERATOR CERTIFICATION

I hereby certify that the information contained herein is true and complete to the best of my knowledge and belief

Arthur D. Archibegue

Signature

Arthur D. Archibegue

Printed Name

Engineer Assistant

Title

10/9/2000

Date

18 SURVEYOR CERTIFICATION

I hereby certify that the well location shown on this plat was plotted from field notes of actual surveys made by me or under my supervision, and that the same is true and correct to the best of my belief.

SEPTEMBER 22, 2000

Date of Survey

Signature and Seal of Professional Surveyor

NEALE C. EDWARDS

NEW MEXICO

6857

REGISTERED PROFESSIONAL SURVEYOR

Certificate No. 6857

USGS 7.5 MINUTE
TOPOGRAPHIC SURVEY MAP

TURLEY QUADRANGLE
SAN JUAN COUNTY, NEW MEXICO

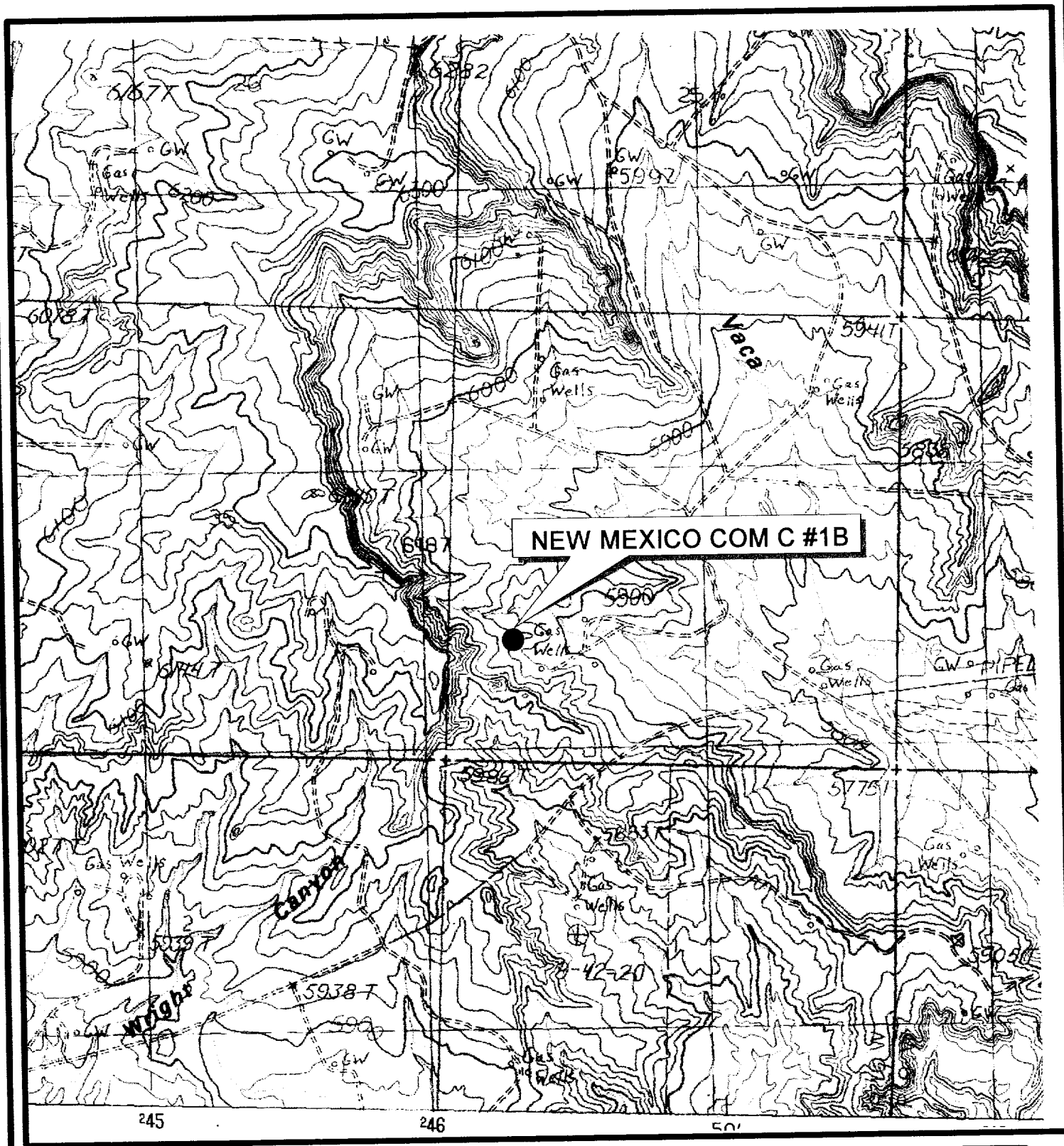
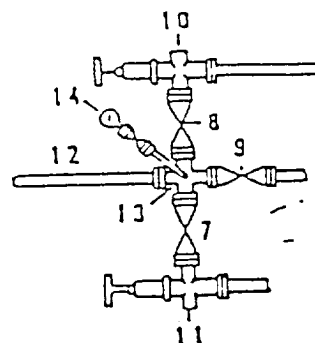
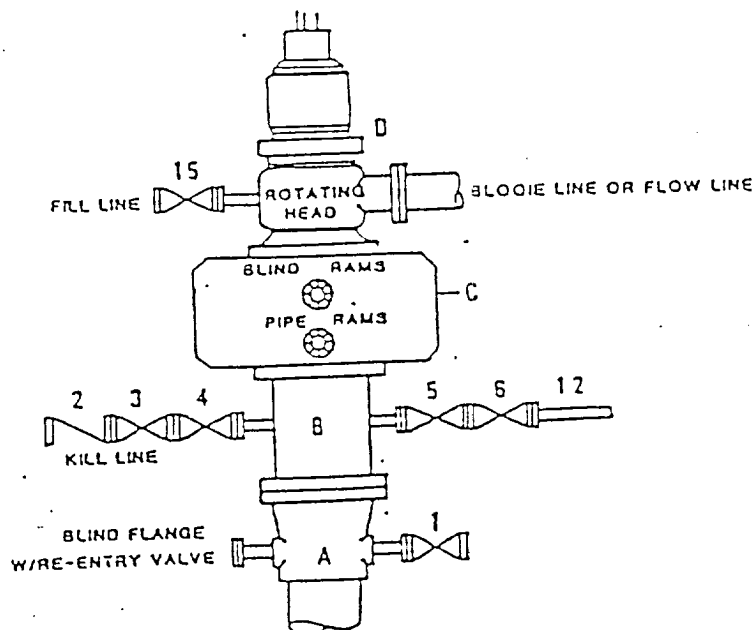


FIGURE 2
PROJECT AREA MAP

FOUR STAR OIL AND GAS COMPANY
PROPOSED NEW MEXICO COM C #1B
TOWNSHIP 30N, RANGE 10W, SECTION 36

DRILLING CONTROL
CONDITION II-B 3000 WP
FOR AIR DRILLING OR
WHERE NITROGEN OR AIR BLOWS ARE EXPECTED

H₂S TRIM REQUIRED
YES _____ NO _____



DRILLING CONTROL

MATERIAL LIST - CONDITION II - B

- | | |
|----------------|--|
| A | Texaco Wellhead |
| B | 3000# W.P. drilling spool with a 2" minimum flanged outlet for kill line and 3" minimum flanged outlet for choke line. |
| C | 3000# W.P. Dual ram type preventer, hydraulic operated with 1" steel, 3000# W.P. control lines (where substructure height is adequate, 2 - 3000# W.P. single ram type preventers may be utilized). |
| D | Rotating Head with fill up outlet and extended Blooe Line. |
| 1,3,4,
7,8. | 2" minimum 3000# W.P. flanged full opening steel gate valve, or Halliburton Lo Torc Plug valve. |
| 2 | 2" minimum 3000# W.P. back pressure valve. |
| 5,6,9 | 3" minimum 3000# W.P. flanged full opening steel gate valve, or Halliburton Lo Torc Plug valve. |
| 12 | 3" minimum schedule 80, Grade "H", seamless line pipe. |
| 13 | 2" minimum x 3" minimum 3000# W.P. flanged cross. |
| 10,11 | 2" minimum 3000# W.P. adjustable choke bodies. |
| 14 | Cameron Mud Gauge or equivalent (location optional in choke line). |
| 15 | 2" minimum 3000# W.P. flanged or threaded full opening steel gate valve, or Halliburton Lo Torc Plug valve. |



TEXACO, INC.
WELLHEAD DIVISION

