

UNITED STATES
DEPARTMENT OF THE INTERIOR
BUREAU OF LAND MANAGEMENT

APPLICATION FOR PERMIT TO DRILL, DEEPEN, OR PLUG BACK

1a. Type of Work DRILL		5. Lease Number NM-047	
1b Type of Well GAS		6. If Indian, Name of Tribe or Allottee 26047	
2. Operator (022521) TEXAKOMA OIL & GAS CORPORATION		7. Unit Agreement Name	
3. Address & Phone No. of Operator %A. R. KENDRICK BOX 516, AZTEC, NM 87410 (505) 334-2555		8. Farm or Lease Name TEXAKOMA FEDERAL 6	
4. Location of Well 813' FSL 1209' FEL P-6-30N-12W		9. Well Number 30-045-30526 2	
14. Distance in Miles from Nearest Town 1.5 MILES		10. Field, Pool, or Wildcat (77200) Fulcher Kutz-Pictured Cliffs	
		11. Section, Township, & Range, Meridian, or Block P-6-30N-12W	
		12. County SAN JUAN	
		13. State NEW MEXICO	
15. Distance from Proposed Location To Nearest Property Line or Lease Line. 1209'		16. Acres in Lease 1920 ACRES	
18. Distance From Proposed Location To Nearest Well Dr, Compl., Or Applied For On Lease. 150'		17. Acres Assigned to Well 159.32 SE/4	
		19. Proposed Depth 2400' <small>This section is subject to fluctuation and proceedural review pursuant to 43 CFR 3166.3 and apply pursuant to 43 CFR 3165.3.</small>	
		20. Rotary or Cable Tools ROTARY	
21. Elevations (DF, RT, GR, Etc.) 6048 GR		22. Approximate Date Work Will Start. SPRING or SUMMER, 2001	
23. Proposed Casing and Cementing Program:			
Exhibits attached as follows:			
"A" Location and Elevation Plat			
"B" Vicinity Map - Access Roads			
"C" Ten-Point Compliance Program			
"D" Multi-Point Requirements for APD			
"E" Blowout Preventer Schematic			
"F" Location Profile			
"G" Drill Rig Layout			
"H" Completion Rig Layout			
"I" Production Facility Schematic			
"J" List of Wells Within One Mile			
24. Signed <u><i>A. R. Kendrick</i></u> Title _____ Agent _____ Date <u>01/23/01</u>			

Permit No. _____ Approval Date _____

Approved By */s/ Joel Farrell* Title _____ Date MAR 28

NOTE: THIS FORMAT IS ISSUED IN LIEU OF U.S. BLM FORM 3160-3.

State of New Mexico
Energy, Minerals & Mining Resources Department
OIL CONSERVATION DIVISION
P. O. Box 6429
Santa Fe, New Mexico 87504-6429.

Form C-102

201 JUN 05 AM 7:54 ☐ AMENDED REPORT

WELL LOCATION AND ACREAGE DEDICATION PLAT

API Number 30-045-30526	Pool Code 77200	Pool Name Fulcher Kutz-Pictured Cliffs
Property Code 26047	Property (Well) Name Texakoma Federal 6	
OGRID No. 022521	Operator Name Texakoma Oil & Gas Corporation	
		Well Number 2
		Elevation 6048'

Surface Location

UL or Lot P	Sec. 6	Twp. 30 N	Rge. 12 W	Lot Idn.	Feet from > 813	North/South South	Feet from > 1209	East/West East	County San Juan
----------------	-----------	--------------	--------------	----------	--------------------	----------------------	---------------------	-------------------	--------------------

Bottom Hole Location If Different From Surface

UL or Lot	Sec.	Twp.	Rge.	Lot Idn.	Feet from >	North/South	Feet from >	East/West	County
-----------	------	------	------	----------	-------------	-------------	-------------	-----------	--------

Dedication 159.32	Joint? N	Consolidation	Order No.
----------------------	-------------	---------------	-----------

NO ALLOWABLE WILL BE ASSIGNED TO THIS COMPLETION UNTIL ALL INTERESTS HAVE BEEN CONSOLIDATED
OR A NON-STANDARD UNIT HAS BEEN APPROVED BY THE DIVISION

MAR 2001

NM-047

1209'

813'

OPERATOR CERTIFICATION

I hereby certify that the information contained herein is true and complete to the best of my knowledge and belief.

Signature

Printed Name

A. R. Kendrick

Title

Agent

Date

01/23/01

SURVEYOR CERTIFICATION

I hereby certify that the well location on this plat was plotted from field notes of actual surveys made by me or under my supervision, and that the same is true and correct to the best of my belief.

Date of Survey

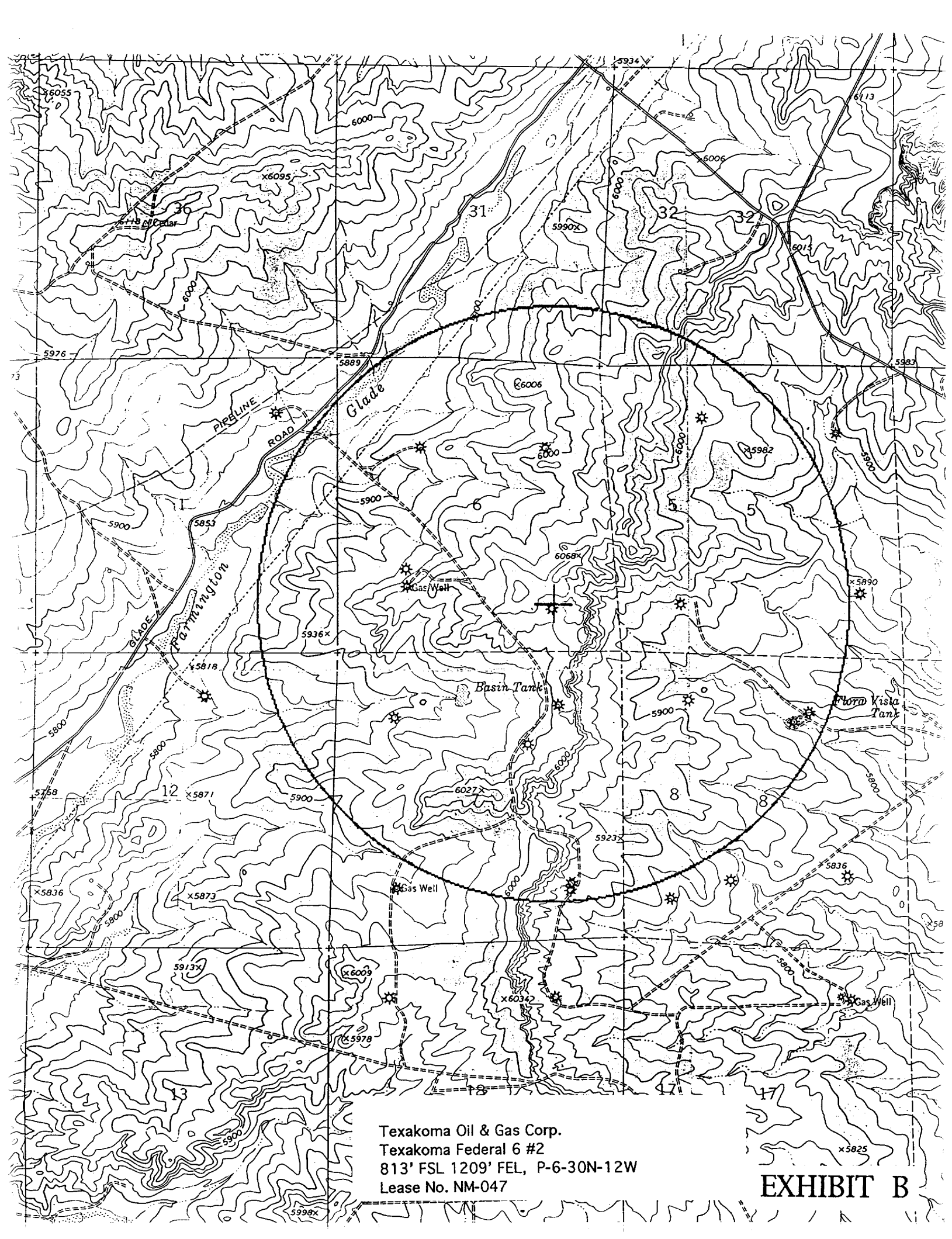
Signature and Seal

Professional Surveyor

6844

Certificate Number

EXHIBIT A



Texakoma Oil & Gas Corp.
Texakoma Federal 6 #2
813' FSL 1209' FEL, P-6-30N-12W
Lease No. NM-047

EXHIBIT B

TEN-POINT PROGRAM
Texakoma Oil & Gas Corporation
Texakoma Federal 6 #2
816' FSL 1209' FEL 6-30N-12W
San Juan County, New Mexico
Lease No. NM-047

1. THE GEOLOGICAL SURFACE FORMATION IS: Nacimiento.
2. THE TOPS OF IMPORTANT GEOLOGICAL MARKERS: (BASED ON EXISTING LOG INFORMATION)

Ojo Alamo	530'
Fruitland Sand	585'
Fruitland Coal	1685'
Pictured Cliffs	2050'
Total Depth	2400' —

3. ESTIMATED DEPTHS OF ANTICIPATED WATER, OIL, GAS OR MINERALS:

<u>SUBSTANCE</u>	<u>FORMATION</u>	<u>ANTICIPATED DEPTH</u>
Gas	Pictured Cliffs	2050'

4. THE CASING PROGRAM:

<u>DEPTH</u>	<u>HOLE SIZE</u>	<u>CASING O.D.</u>	<u>WEIGHT</u>	<u>GRADE</u>	<u>TYPE</u>	<u>NEW/USED</u>
0- 175'	8-3/4"	7"	20#	J-55	ST&C	NEW
0-2400' —	6-1/4"	4-1/2"	10.5#	J-55	ST&C	NEW

PROPOSED CEMENT PROGRAM: To effectively isolate and seal off all water, oil gas and coal-bearing strata encountered by the utilization of spacers, centralizers and swirling centralizers at the base of the Ojo Alamo formation as specified by NTL-FRA 90-1 III.B and API standards; and by using cement volumes as follows: (exact volumes to be determined from logs.)

SURFACE: 55 Cu Ft (60 Sx) Class "H" w/0.25# Flocele/Sx plus 2% CaCl (100% Excess).

PRODUCTION: 162 Cu Ft (82 Sx Light standard cement w/2% Metasylicate + 0.25 pps Flocele mixed to 12.4 ppg followed by 162 Cu Ft (134 Sx) Standard w/0.6% Halad-322 mixed to 15.6 ppg w/caliper plus 25% excess in both slurries. Grand Totals: 364 Cu Ft (216 Sx). —

5. OPERATOR'S MINIMUM SPECIFICATIONS FOR PRESSURE CONTROL:

Exhibit E is a schematic of the blowout preventer used by a local contractor for other wells in the area.

The BOP to be used is an Annular BOP with screwed connections with high-pressure inlet and outlet hoses, all tested to 2000 psi minimum.

"2M" BLOWOUT PREVENTER SYSTEM

