

DISTRICT I
1625 N. French Dr., Hobbs, NM 88240
DISTRICT II
811 South Frist, Artesia, NM 88210
DISTRICT III
1000 Rio Brazos Rd., Aztec, NM 87410
DISTRICT IV
2040 South Pacheco, Santa Fe, NM 87505

State of New Mexico
Energy, Minerals and Natural Resources

OIL CONSERVATION DIVISION

2040 South Pacheco
Santa Fe, NM 87505

Form C-10
Revised March 25, 1999
Instructions on back
Submit to Appropriate District Office
State Lease - 6 Copie
Fee Lease - 5 Copie

☐ AMENDED REPORT

APPLICATION FOR PERMIT TO DRILL, RE-ENTER, DEEPEN, PLUGBACK, OR ADD A ZONE

¹ Operator Name and Address Four Star Oil and Gas Co. 3300 N. Butler Ave, Ste100 Farmington NM 87401				² OGRID Number 131994	
⁴ Property Code 27419		⁵ Property Name LM BARTON			³ API Number 30-045-30540
⁶ Well No. 1B					

⁷ Surface Location

Ul or lot no	Section	Township	Range	Lot.Idn	Feet From The	North/South Line	Feet From The	East/West Line	County
D	12	30N	12W		660	NORTH	960	WEST	SAN JUAN

⁸ Proposed Bottom Hole Location If Different From Surface

Ul or lot no	Section	Township	Range	Lot.Idn	Feet From The	North/South Line	Feet From The	East/West Line	County
⁹ Proposed Pool 1 MESA VERDE					¹⁰ Proposed Pool 2				

¹¹ Work Type Code N	¹² WellType Code G	¹³ Rotary or C.T. R	¹⁴ Lease Type Code P	¹⁵ Ground Level Elevation 5670'
¹⁶ Multiple N	¹⁷ Proposed Depth 4800'	¹⁸ Formation MV	¹⁹ Contractor BEAR CAT	²⁰ Spud Date 5/1/01

²¹ Proposed Casing and Cement Program

SIZE OF HOLE	SIZE OF CASING	WEIGHT PER FOOT	SETTING DEPTH	SACKS OF CEMENT	EST. TOP
12-1/4"	8-5/8" K-55	24#	350	260	SURFACE
7-7/8"	4-1/2" J-55	11.6#	4800'	550	SURFACE

²² Describe the proposed program. If this application is to DEEPEN or PLUG BACK give the data on the present productive zone and proposed new productive zone.
Describe the blowout prevention program, if any. Use additional sheets if necessary.

Four Star Oil and Gas Company proposes to drill this development well to a depth of 4800'. This well will test the productivity of the MESA VERDE formation. If the well is unproductive, it will be plugged and abandoned as per state requirements.
Bond coverage for this well is provided by Bond NO. K02907914-C4073 nation wide BLM bond & Bond No. K02907914-F4072-Nation wide BIA bond.
A threatened and endangered species survey and archaeological survey were performed as required

²³ I hereby certify that the rules and regulations of the Oil Conservation Division have been complied with and that the information given above is true and complete to the best of my knowledge and belief.

Signature Arthur D. Archibezue
Printed Name Arthur D. Archibezue
Title Eng. Assistant
Date 1/30/01 Telephone 325-4397

OIL CONSERVATION DIVISION

Approved By: [Signature]
Title: **DEPUTY OIL & GAS INSPECTOR, DIST. #3**

Approval Date: FEB -1 2001 Expiration Date: FEB -1 2002

Conditions of Approval:
Attached

District I
PO Box 1980, Hobbs, NM 88241-1980

District II
PO Drawer DD, Artesia, NM 88211-0719

District III
1000 Rio Brazos Rd., Aztec, NM 87410

District IV
PO Box 2088, Santa Fe, NM 87504-2088

State of New Mexico
Energy, Minerals & Natural Resources Department

OIL CONSERVATION DIVISION
PO Box 2088
Santa Fe, NM 87504-2088

Form C-102
Revised February 21, 1994
Instructions on back
Submit to Appropriate District Office
State Lease - 4 Copies
Fee Lease - 3 Copies

☐ AMENDED REPORT

WELL LOCATION AND ACREAGE DEDICATION PLAT

*API Number 30-045 30540		*Pool Code 72319	*Pool Name BLANCO MESAVERDE
*Property Code 27419	*Property Name L.M. BARTON		*Well Number 1B
*OGRIID No. 131994	*Operator Name FOUR STAR OIL & GAS COMPANY		*Elevation 5670'

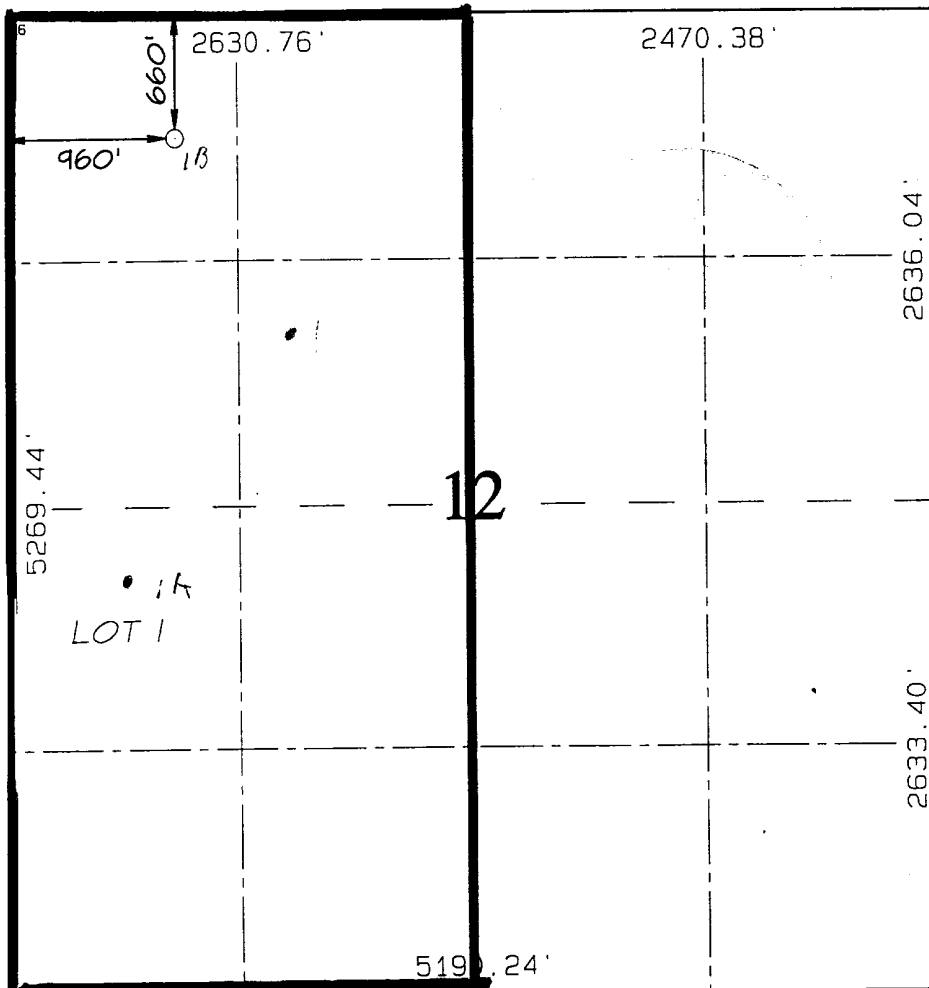
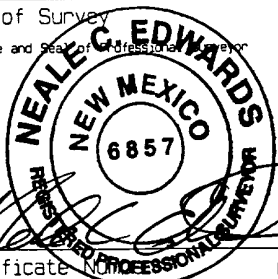
¹⁰ Surface Location

UL or lot no.	Section	Township	Range	Lot Idn	Feet from the	North/South line	Feet from the	East/West line	County
D	12	30N	12W		660	NORTH	960	WEST	SAN JUAN

¹¹ Bottom Hole Location If Different From Surface

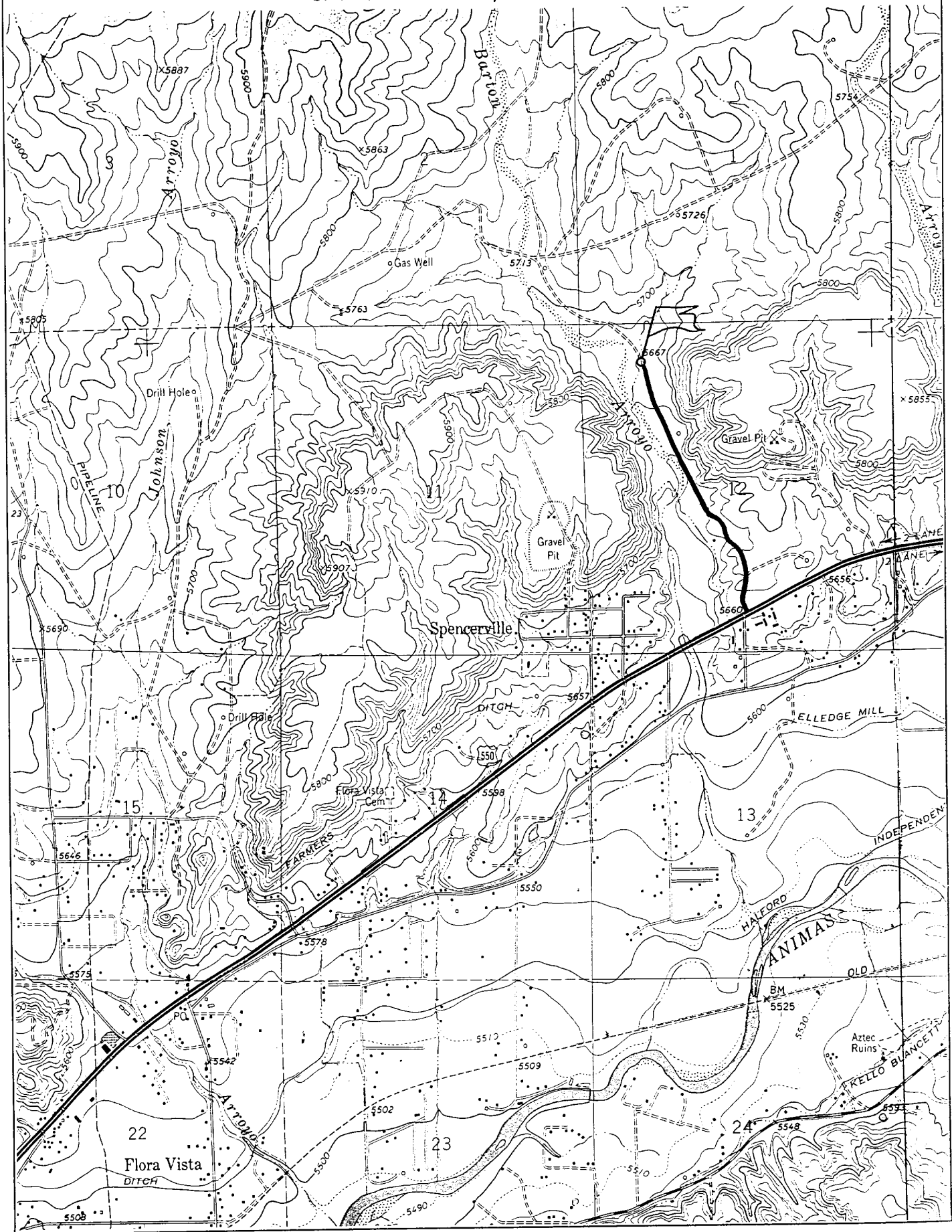
UL or lot no.	Section	Township	Range	Lot Idn	Feet from the	North/South line	Feet from the	East/West line	County
¹² Dedicated Acres 319.45 1/2		¹³ Joint or Infill I		¹⁴ Consolidation Code		¹⁵ Order No.			

NO ALLOWABLE WILL BE ASSIGNED TO THIS COMPLETION UNTIL ALL INTERESTS HAVE BEEN CONSOLIDATED
OR A NON-STANDARD UNIT HAS BEEN APPROVED BY THE DIVISION

	<p>¹⁷ OPERATOR CERTIFICATION I hereby certify that the information contained herein is true and complete to the best of my knowledge and belief.</p> <p><u>Arthur D. Archibeque</u> Signature <u>Arthur D. Archibeque</u> Printed Name <u>Engineer Assistant</u> Title <u>9/03/01</u> Date</p>
	<p>¹⁸ SURVEYOR CERTIFICATION I hereby certify that the well location shown on this plat was plotted from field notes of actual surveys made by me or under my supervision, and that the same is true and correct to the best of my belief.</p> <p>DECEMBER 26, 2000 Date of Survey Signature and Seal of Professional Surveyor  Certificate No. 6857</p>

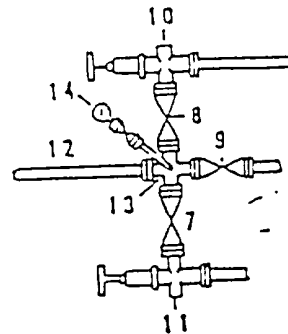
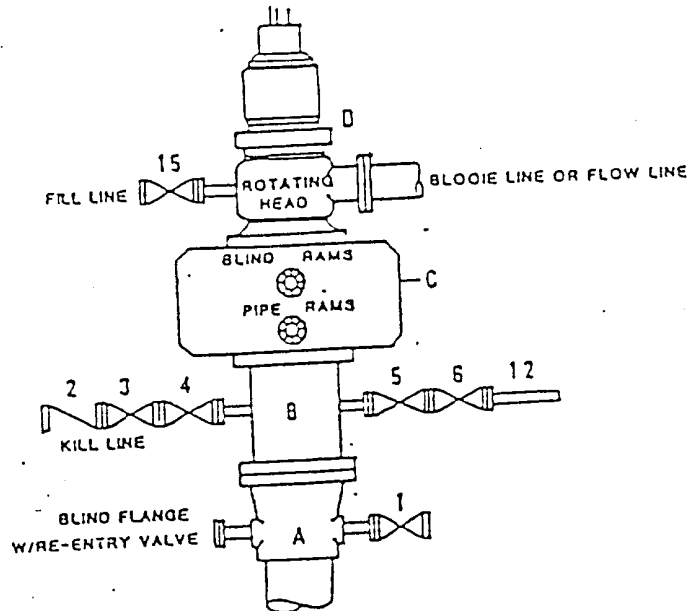
FOUR STAR OIL & GAS COMPANY L.M. BARTON #1B

660' FNL & 960' FNL, SECTION 12, T30N, R12W, N.M.P.M.
SAN JUAN COUNTY, NEW MEXICO



DRILLING CONTROL
CONDITION II-B 3000 WP
FOR AIR DRILLING OR
WHERE NITROGEN OR AIR BLOWS ARE EXPECTED

H₂S TRIM REQUIRED
YES _____ NO _____



DRILLING CONTROL

MATERIAL LIST - CONDITION II - B

- | | |
|-------------|----------------------------------------------------------------------------------------------------------------------------------------------------------------------------------------------------|
| A | Texaco Wellhead |
| B | 3000# W.P. drilling spool with a 2" minimum flanged outlet for kill line and 3" minimum flanged outlet for choke line. |
| C | 3000# W.P. Dual ram type preventer, hydraulic operated with 1" steel, 3000# W.P. control lines (where substructure height is adequate, 2 - 3000# W.P. single ram type preventers may be utilized). |
| D | Rotating Head with fill up outlet and extended Blooe Line. |
| 1,3,4, 7,8, | 2" minimum 3000# W.P. flanged full opening steel gate valve, or Halliburton Lo Torc Plug Valve. |
| 2 | 2" minimum 3000# W.P. back pressure valve. |
| 5,6,9 | 3" minimum 3000# W.P. flanged full opening steel gate valve, or Halliburton Lo Torc Plug Valve. |
| 12 | 3" minimum schedule 80, Grade "B", seamless line pipe. |
| 13 | 2" minimum x 3" minimum 3000# W.P. flanged cross. |
| 10,11 | 2" minimum 3000# W.P. adjustable choke bodies. |
| 14 | Cameron Mud Gauge or equivalent (location optional in choke line). |
| 15 | 2" minimum 3000# W.P. flanged or threaded full opening steel gate valve, or Halliburton Lo Torc Plug Valve. |



TEXACO, INC.
WILLIAMSBURG DIVISION

