

DISTRICT I
1625 N. French Dr., Hobbs, NM 88240
DISTRICT II
811 South Frist, Artesia, NM 88210
DISTRICT III
1000 Rio Brazos Rd., Aztec, NM 87410
DISTRICT IV
2040 South Pacheco, Santa Fe, NM 87505

State of New Mexico
Energy, Minerals and Natural Resources

Form C-10

Revised March 25, 1999

Instructions on back

Submit to Appropriate District Office

State Lease - 6 Copie

Fee Lease - 5 Copie

☐ AMENDED REPORT

OIL CONSERVATION DIVISION

2040 South Pacheco

Santa Fe, NM 87505

APPLICATION FOR PERMIT TO DRILL, RE-ENTER, DEEPEN, PLUGBACK, OR ADD A ZONE

¹ Operator Name and Address Four Star Oil and Gas Co. 3300 N. Butler Ave, Ste100 Farmington NM 87401				² OGRID Number 131994	
⁴ Property Code 17910		⁵ Property Name NEW MEXICO COM		³ API Number 30045-30542	
				⁶ Well No. 1B	

⁷ Surface Location									
UI or lot no	Section	Township	Range	Lot.Idn	Feet From The	North/South Line	Feet From The	East/West Line	County
C	36	30N	10W		780	SOUTH	1955	EAST	SAN JUAN

⁸ Proposed Bottom Hole Location If Different From Surface									
UI or lot no	Section	Township	Range	Lot.Idn	Feet From The	North/South Line	Feet From The	East/West Line	County
⁹ Proposed Pool 1 MESA VERDE					¹⁰ Proposed Pool 2				

¹¹ Work Type Code N	¹² WellType Code G	¹³ Rotary or C.T. R	¹⁴ Lease Type Code S	¹⁵ Ground Level Elevation 5836'
¹⁶ Multiple N	¹⁷ Proposed Depth 5000'	¹⁸ Formation MV	¹⁹ Contractor BEAR CAT	²⁰ Spud Date 5/1/01

²¹ Proposed Casing and Cement Program					
SIZE OF HOLE	SIZE OF CASING	WEIGHT PER FOOT	SETTING DEPTH	SACKS OF CEMENT	EST. TOP
12-1/4"	8-5/8" K-55	24#	350'	260SX	SURFACE
7-7/8"	4-1/2" J-55	11.6#	5000'	550SX	SURFACE

22 Describe the proposed program. If this application is to DEEPEN or PLUG BACK give the data on the present productive zone and proposed new productive zone.
Describe the blowout prevention program, if any. Use additional sheets if necessary.

Four Star Oil and Gas Company proposes to drill this development well to a depth of 5000'. This well will test the productivity of the MESA VERDE formation. If the well is unproductive, it will be plugged and abandoned as per state requirements.
Bond coverage for this well is provided by Bond NO. K02907914-C4073 nation wide BLM bond & Bond No. K02907914-F4072-Nation wide BIA bond.
A threatened and endangered species survey and archaeological survey were performed as required.

23 I hereby certify that the rules and regulations of the Oil Conservation Division have been complied with and that the information given above is true and complete to the best of my knowledge and belief.

Signature *Arthur D. Archibeque*

Printed Name Arthur D. Archibeque

Title Eng. Assistant

Date 01/31/01

Telephone 325-4397

OIL CONSERVATION DIVISION

Approved By: *[Signature]*

Title: DEPUTY OIL & GAS INSPECTOR, DIST. 40

Approval Date: FEB - 1 2001

Expiration Date: FEB - 1 2002

Conditions of Approval:

Attached

District I
PO Box 1980, Hobbs, NM 88241-1980

District II
PO Drawer DD, Artesia, NM 88211-0719

District III
1000 Rio Brazos Rd., Aztec, NM 87410

District IV
PO Box 2088, Santa Fe, NM 87504-2088

State of New Mexico
Energy, Minerals & Natural Resources Department

OIL CONSERVATION DIVISION
PO Box 2088
Santa Fe, NM 87504-2088

Form C-102
Revised February 21, 1994
Instructions on back
Submit to Appropriate District Office
State Lease - 4 Copies
Fee Lease - 3 Copies

☐ AMENDED REPORT

WELL LOCATION AND ACREAGE DEDICATION PLAT

*API Number 30-045-30542		*Pool Code 72319	*Pool Name BLANCO MESAVERDE
*Property Code 17710	*Property Name NEW MEXICO COM		*Well Number 1B
*GRID No. 131994	*Operator Name FOUR STAR OIL & GAS COMPANY		*Elevation 5836'

¹⁰ Surface Location

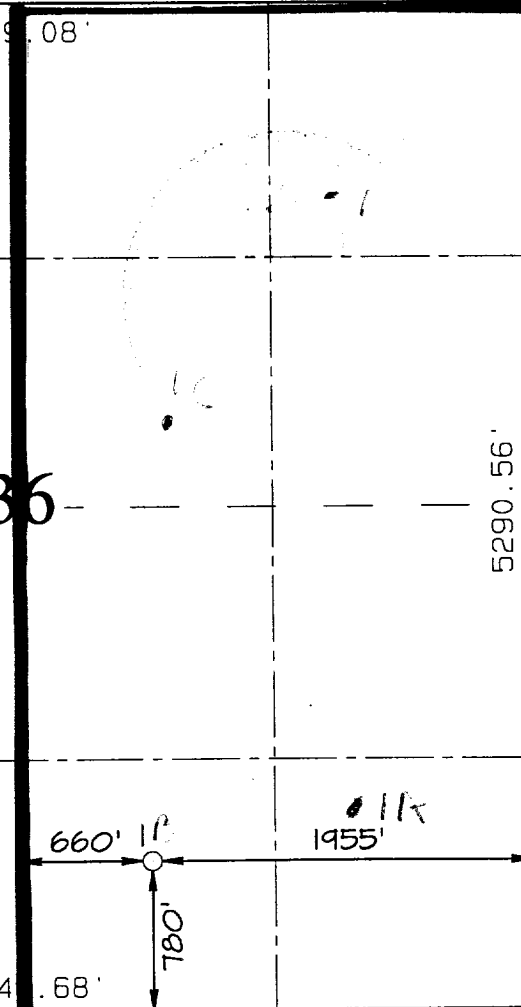
UL or lot no.	Section	Township	Range	Lot Idn	Feet from the	North/South line	Feet from the	East/West line	County
0	36	30N	10W		780	SOUTH	1955	EAST	SAN JUAN

¹¹ Bottom Hole Location If Different From Surface

UL or lot no.	Section	Township	Range	Lot Idn	Feet from the	North/South line	Feet from the	East/West line	County

¹² Dedicated Acres 3.20 E/2	¹³ Joint or Infill I	¹⁴ Consolidation Code	¹⁵ Order No.
---	------------------------------------	----------------------------------	-------------------------

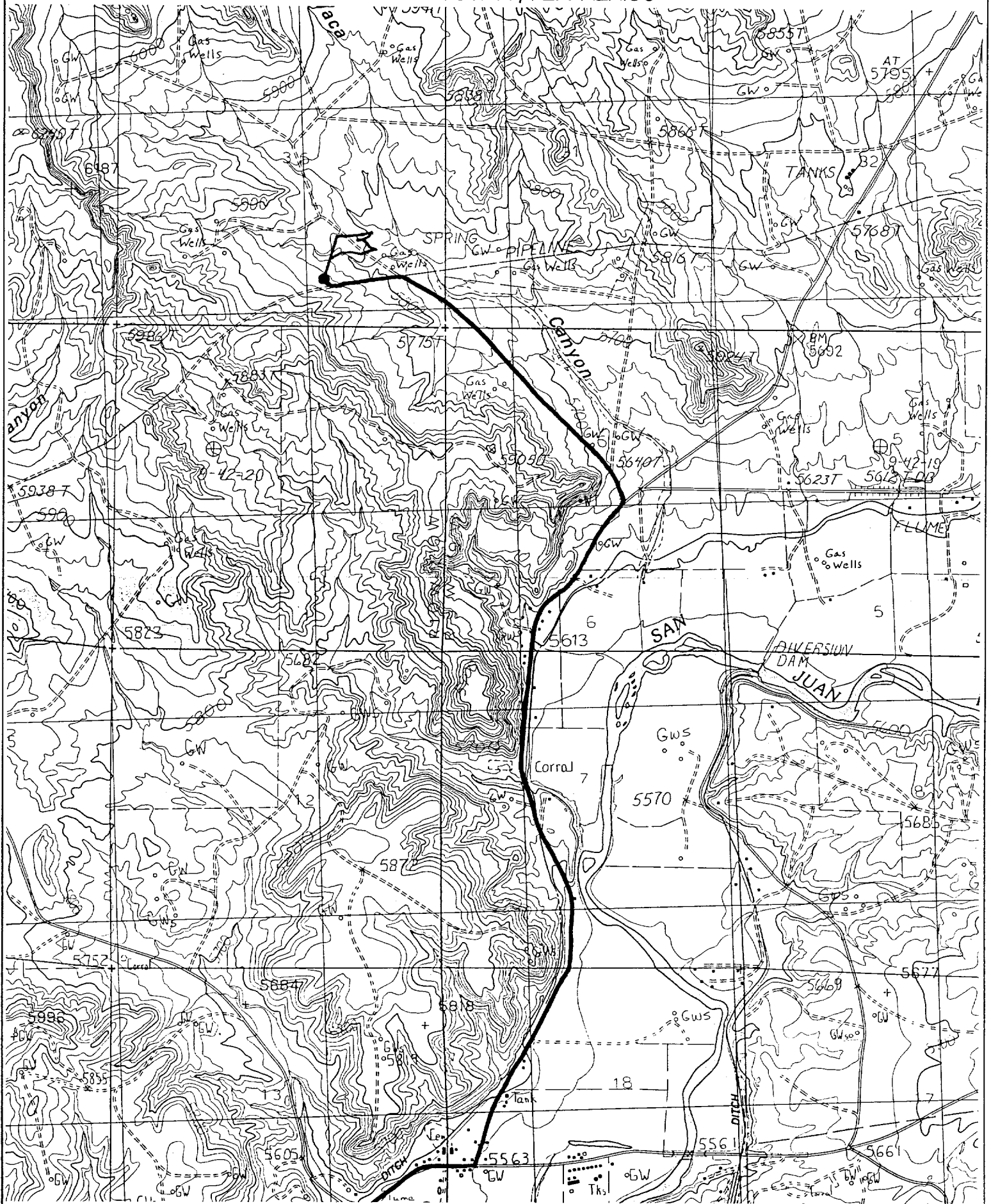
NO ALLOWABLE WILL BE ASSIGNED TO THIS COMPLETION UNTIL ALL INTERESTS HAVE BEEN CONSOLIDATED OR A NON-STANDARD UNIT HAS BEEN APPROVED BY THE DIVISION

¹⁶	5239.08'		¹⁷ OPERATOR CERTIFICATION I hereby certify that the information contained herein is true and complete to the best of my knowledge and belief. Arthur D. Archibegue Signature Arthur D. Archibegue Printed Name Engineer Assistant Title 01/30/01 Date
	5283.96'		

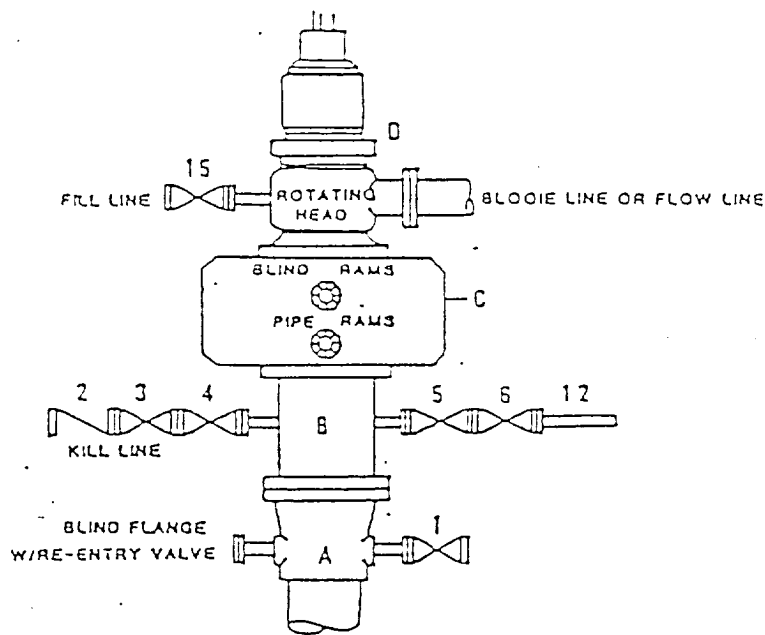
FOUR STAR OIL & GAS COMPANY NEW MEXICO COM #1B

780' FSL & 1955' FEL, SECTION 36, T30N, R10W, N.M.P.M.

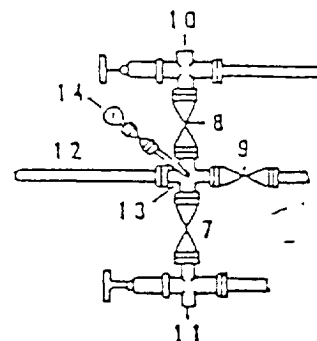
SAN JUAN COUNTY, NEW MEXICO



DRILLING CONTROL
CONDITION II-B 3000 WP
FOR AIR DRILLING OR
WHERE NITROGEN OR AIR BLOWS ARE EXPECTED



H₂S TRIM REQUIRED
YES _____ NO _____



DRILLING CONTROL

MATERIAL LIST - CONDITION II - B

- | | |
|----------------|---|
| A | Texaco Wellhead |
| B | 3000# W.P. drilling spool with a 2" minimum flanged outlet for kill line and 1" minimum flanged outlet for choke line. |
| C | 3000# W.P. Dual ram type preventer, hydraulic operated with 1" steel, 3000# W.P. control lines (where sub-structure height is adequate, 2 - 3000# W.P. single ram type preventers may be utilized). |
| D | Rotating Head with fill up outlet and extended Bloodie Line. |
| 1, 3, 4, 7, 8, | 2" minimum 3000# W.P. flanged full opening steel gate valve, or Halliburton Lo Torc Plug valve. |
| 2 | 2" minimum 3000# W.P. back pressure valve. |
| 5, 6, 9 | 1" minimum 3000# W.P. flanged full opening steel gate valve, or Halliburton Lo Torc Plug valve. |
| 12 | 1" minimum schedule 80, Grade "B", seamless line pipe. |
| 13 | 1" minimum x 1" minimum 3000# W.P. flanged cross. |
| 10, 11 | 2" minimum 3000# W.P. adjustable choke bodies. |
| 14 | Cameron Mud Gauge or equivalent (location optional in choke line). |
| 15 | 1" minimum 3000# W.P. flanged or threaded full opening steel gate valve, or Halliburton Lo Torc Plug valve. |

BTG

TEXACO, INC.
MATERIAL DIVISION

BTG