

District I
PO Box 1980, Hobbs, NM 88241-1980
District II
811 S. 1st Street, Artesia, NM 88210-2834
District III
1000 Rio Brazos Rd., Aztec, NM 87410
District IV
2040 South Pacheco, Santa Fe, NM 87505

State of New Mexico
Energy, Minerals & Natural Resources Department

OIL CONSERVATION DIVISION
2040 South Pacheco
Santa Fe, NM 87505

Form C-101
Revised October 18, 1999
Instructions on back
Submit to Appropriate District Office
State Lease - 6 Copies
Fee Lease - 5 Copies

☐ AMENDED REPORT

APPLICATION FOR PERMIT TO DRILL, RE-ENTER, DEEPEN, PLUG BACK, OR ADD A ZONE

¹ Operator name and Address Cross Timbers Operating Company 2700 Farmington Ave., Bldg. K. Ste 1 Farmington, NM 87401		² OGRID Number 167067
⁴ Property Code 22691	⁵ Property Name Duff Gas Com	³ API Number 30-0 45-30544
		⁶ Well No. #3

⁷ Surface Location

UL or lot no.	Section	Township	Range	Lot. Idn	Feet from the	North/South Line	Feet from the	East/West line	County
P	27	30N	12W		1,210	South	660'	East	San Juan

⁸ Proposed Bottom Hole Location If Different From Surface

UL or lot no.	Section	Township	Range	Lot. Idn	Feet from the	North/South Line	Feet from the	East/West line	County
K	27	30N	12W		1,980'	South	1,620'	West	San Juan

⁹ Proposed Pool 1

¹⁰ Proposed Pool 2

Flora Vista - Blanco Mesaverde	
--------------------------------	--

¹¹ Work Type Code N -	¹² Well Type Code G	¹³ Cable/Rotary R	¹⁴ Lease Type Code P -	¹⁵ Ground Level Elevation 5,623'
¹⁶ Multiple No	¹⁷ Proposed Depth 6,239' MD -	¹⁸ Formation Mesaverde	¹⁹ Contractor Bearcat Drilling	²⁰ Spud Date 2/19/01

²¹ Proposed Casing and Cement Program

Hole Size	Casing Size	Casing weight/foot	Setting Depth	Sacks of Cement	Estimated TOC
12-1/4"	9-5/8"	36.0#/ft	400'	+215 sx	Surface
8-3/4"	7"	23.0#/ft	3,600' MD		Surface
6-1/8"	open hole	open hole	6,239' MD -	n/a	n/a

²² Describe the proposed program. If this application is to DEEPEN or PLUG BACK give the data on the present productive zone and proposed new productive zone. Describe the blowout prevention program, if any. Use additional sheets if necessary.

Set 9-5/8" surf pipe @ 400' with +215 sx cl B or Type III cmt. Circ cmt to surf.
Set 7" intermediate csg @ 3,600 MD (3,450' TVD) with (lead) +200 sx lightweight cmt (cl B w/3% extender) mixed at 11.4 ppg followed by (tail) 250 sx cl B or Type III cmt mixed at 14.6 ppg. Circ cmt to surface.
The 7" casing will be set through the curve. The curve will begin (KOP) 3,200' and should be completed by 3,450'. The rig will then PU downhole motor & MWD and drill 6-1/8" open hole horizontal to the target location. The horizontal open hole section will not use casing. This well will be completed as on open hole.
A drawing of the BOP stack and testing procedure is attached. A copy of the directional plan is also inc.

²³ I hereby certify that the information given above is true and complete to the best of my knowledge and belief.

Signature:

Printed name: Jeffrey W. Patton

Title: Drilling Engineer

OIL CONSERVATION DIVISION

Approved by:

Title: Deputy Oil & Gas Inspector, Dist. 28

Approval Date:

FEB -5 2001

Expiration Date:

FEB -5 2002

WOLD C104 FOR Directional survey
Bottom hole is NSL

DISTRICT I
P.O. Box 1980, Hobbs, N.M. 88241-1980

DISTRICT II
P.O. Drawer DD, Artesia, N.M. 88211-0719

DISTRICT III
1000 Rio Brazos Rd., Aztec, N.M. 87410

DISTRICT IV
PO Box 2088, Santa Fe, NM 87504-2088

State of New Mexico
Energy, Minerals & Natural Resources Department

OIL CONSERVATION DIVISION

P.O. Box 2088
Santa Fe, NM 87504-2088

Form C-102

Revised February 21, 1994

Instructions on back

Submit to Appropriate District Office

State Lease - 4 Copies

Fee Lease - 3 Copies

☐ AMENDED REPORT

WELL LOCATION AND ACREAGE DEDICATION PLAT

¹ API Number 30-045-30544	² Pool Code 72-379	³ Pool Name Flora Vista BLANCO MESAVERDE
⁴ Property Code 22691	⁵ Property Name DUFF GAS COM	⁶ Well Number 3
⁷ GRID No. 167067	⁸ Operator Name CROSS TIMBERS OPERATING CO.	⁹ Elevation 5623'

¹⁰ Surface Location

UL or lot no.	Section	Township	Range	Lot Idn	Feet from the	North/South line	Feet from the	East/West line	County
P	27	30-N	12-W		1210'	SOUTH	660'	EAST	SAN JUAN

¹¹ Bottom Hole Location If Different From Surface

UL or lot no.	Section	Township	Range	Lot Idn	Feet from the	North/South line	Feet from the	East/West line	County
K	27	30-N	12-W		1210'	SOUTH	1620'	WEST	SAN JUAN
¹² Dedicated Acres 320 5/2		¹³ Joint or Infill		¹⁴ Consolidation Code		¹⁵ Order No.			

NO ALLOWABLE WILL BE ASSIGNED TO THIS COMPLETION UNTIL ALL INTERESTS HAVE BEEN CONSOLIDATED
OR A NON-STANDARD UNIT HAS BEEN APPROVED BY THE DIVISION

<p>16</p> <p>FD. B.L.M. BC. 1975</p>	<p>17 OPERATOR CERTIFICATION</p> <p>I hereby certify that the information contained herein is true and complete to the best of my knowledge and belief</p> <p>Signature <u>Jeffrey W. Patton</u></p> <p>Printed Name <u>JEFFREY W. PATTON</u></p> <p>Title <u>DRILLING ENGINEER</u></p> <p>Date <u>1/23/01</u></p>
	<p>18 SURVEYOR CERTIFICATION</p> <p>I hereby certify that the well location shown on this plat was plotted from field notes of actual surveys made by me or under my supervision, and that the same is true and correct to the best of my belief</p> <p>Date of Survey <u>11-15-99</u></p> <p>Signature and Seal of Professional Surveyor: <u>Roy A. Rush</u></p> <p>Certificate Number <u>8894</u></p>

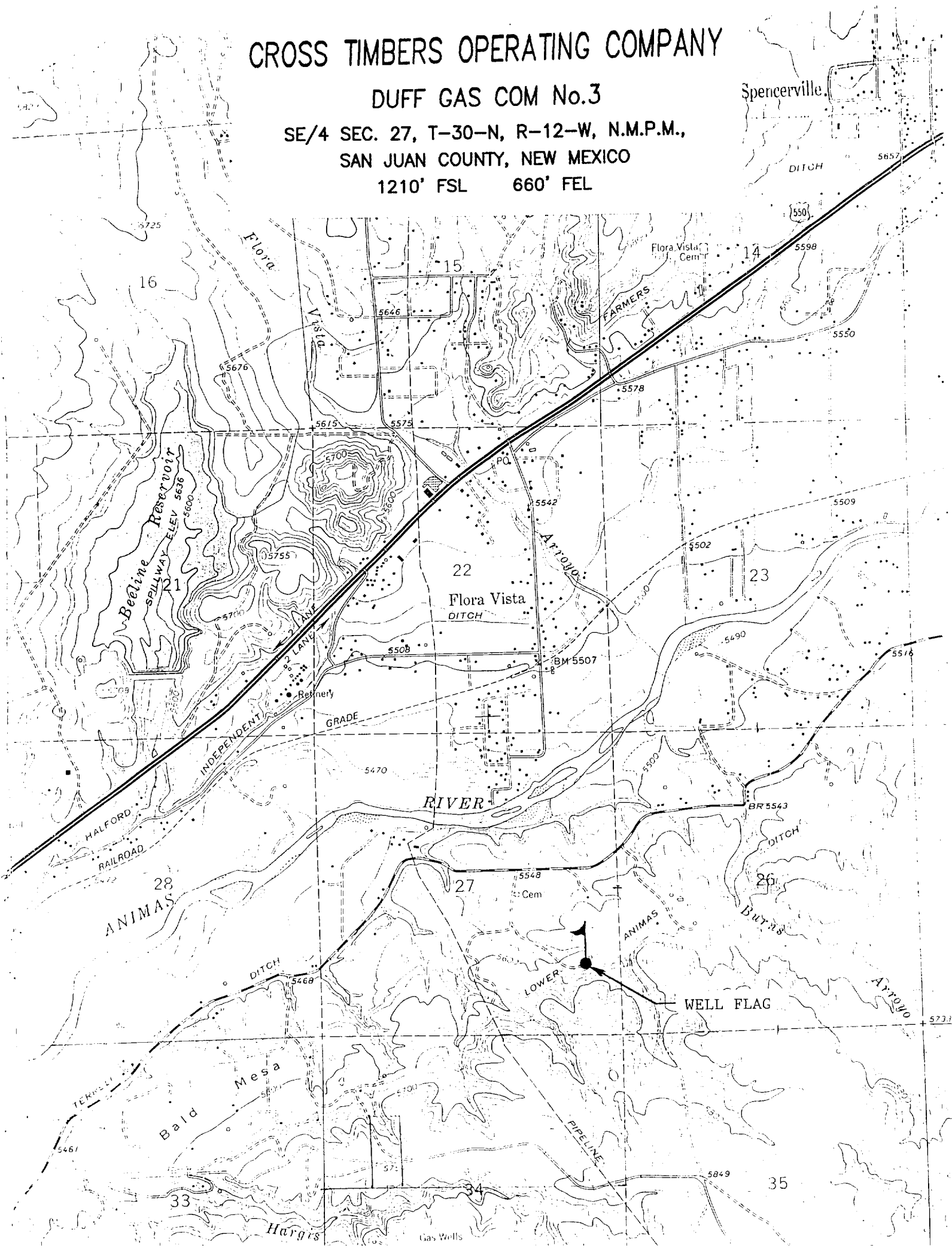
CROSS TIMBERS OPERATING COMPANY

DUFF GAS COM No.3

SE/4 SEC. 27, T-30-N, R-12-W, N.M.P.M.,

SAN JUAN COUNTY, NEW MEXICO

1210' FSL 660' FEL





Cross Timbers Operating Company

BOP SCHEMATIC FOR DRILLING OPERATIONS CLASS 1 (2M) NORMAL PRESSURE

TESTING PROCEDURE

1. Test BOP after installation:

Pressure test BOP to 200-300
psig (low pressure) for 5 min.

Test BOP to Working Press or
to 70% internal yield of surf csg
(10 min).

2. Test operation of (both) rams on every trip.

3. Check and record Accumulator pressure on every tour.

4. Re-pressure test BOP stack after changing out rams.

5. Have kelly cock valve with handle available.

6. Have safety valve and subs to fit all sizes of drill string.

