

UNITED STATES
DEPARTMENT OF THE INTERIOR
BUREAU OF LAND MANAGEMENT

APPLICATION FOR PERMIT TO DRILL, DEEPEN, OR PLUG BACK

1a. Type of Work DRILL	5. Lease Number SF-078138 Unit Reporting Number
1b. Type of Well GAS	6. If Indian, All. or Tribe
2. Operator BURLINGTON RESOURCES Oil & Gas Company	7. Unit Agreement Name
3. Address & Phone No. of Operator PO Box 4289, Farmington, NM 87499 (505) 326-9700	8. Farm or Lease Name Morris A
4. Location of Well 880' FSL, 990' FWL Latitude 36° 47.6, Longitude 108° 01.2	9. Well Number #1R
	10. Field Pool, Wildcat <input checked="" type="checkbox"/> Basin Fruitland Coal/ AZTEC Pictured Cliffs
	11. Sec., Twn, Rge, Mer. (NMPM) Sec. 20, T-30-N, R-11-W API # 30-045-30559
14. Distance in Miles from Nearest Town 2.5 miles from Aztec, NM	12. County San Juan
	13. State NM
15. Distance from Proposed Location to Nearest Property or Lease Line 880'	
16. Acres in Lease	17. Acres Assigned to Well FTC: 319.37 S/2 PC: 159.37 SW/4
18. Distance from Proposed Location to Nearest Well, Drig, Compl, or Applied for on this Lease 3293'	
19. Proposed Depth This action is subject to technical and procedural review pursuant to 43 CFR 3165.3, and appeal pursuant to 43 CFR 3165.4. 2309'	20. Rotary or Cable Tools Rotary
21. Elevations (DF, FT, GR, Etc.) 5787' GR	22. Approx. Date Work will Start
23. Proposed Casing and Cementing Program See Operations Plan attached	DRILLING OPERATIONS AUTHORIZED ARE SUBJECT TO COMPLY WITH THE ATTACHED "GENERAL ALIEN" PLAN
24. Authorized by: <u>Debra Cole</u> Regulatory/Compliance Supervisor	Date <u>2-6-01</u>

PERMIT NO. _____ APPROVAL DATE _____
APPROVED BY /s/ Joel Farrell TITLE _____ DATE AUG - 1

Archaeological Report to be submitted

Threatened and Endangered Species Report to be submitted

NOTE: This format is issued in lieu of U.S. BLM Form 3160-3

Title 18 U.S.C. Section 1001, makes it a crime for any person knowingly and willfully to make to any department or agency of the United States any false, fictitious or fraudulent statements or presentations as to any matter within its jurisdiction.

ORIGINALLY STAKED AS MORRIS A COM #103

NMOCD

DISTRICT I
1625 N. French Dr., Hobbs, N.M. 88240

State of New Mexico
Energy, Minerals & Natural Resources Department

Form C-102
Revised August 15, 2000

DISTRICT II
811 South First, Artesia, N.M. 88210

OIL CONSERVATION DIVISION

Submit to Appropriate District Office
State Lease - 4 Copies
Fee Lease - 3 Copies

DISTRICT III
1000 Rio Brazos Rd., Aztec, N.M. 87410

2040 South Pacheco
Santa Fe, NM 87505

☐ AMENDED REPORT

DISTRICT IV
2040 South Pacheco, Santa Fe, NM 87505

WELL LOCATION AND ACREAGE DEDICATION PLAT

¹ API Number 30-045-30559	² Pool Code 71280	³ Pool Name Aztec
⁴ Property Code 7326	⁵ Property Name MORRIS A	Basin Fruitland Coal/ Picture Pictured Cliffs
⁷ GRID No. 14538	⁶ Operator Name BURLINGTON RESOURCES OIL & GAS INC.	⁸ Well Number 1R
		⁹ Elevation 5787

¹⁰ Surface Location

UL or lot no.	Section	Township	Range	Lot Idn	Feet from the	North/South line	Feet from the	East/West line	County
M	20	30-N	11-W		880	SOUTH	990	WEST	SAN JUAN

¹¹ Bottom Hole Location If Different From Surface

UL or lot no.	Section	Township	Range	Lot Idn	Feet from the	North/South line	Feet from the	East/West line	County
¹² Dedicated Acres FTC: S/319.37 PC: SW/159.37			¹³ Joint or Infill		¹⁴ Consolidation Code		¹⁵ Order No.		

NO ALLOWABLE WILL BE ASSIGNED TO THIS COMPLETION UNTIL ALL INTERESTS HAVE BEEN CONSOLIDATED
OR A NON-STANDARD UNIT HAS BEEN APPROVED BY THE DIVISION

16		17 OPERATOR CERTIFICATION	
Reissued to show revised well name & new formation.		I hereby certify that the information contained herein is true and complete to the best of my knowledge and belief.	
LOT 3		Signature <i>Peggy Cole</i>	
LOT 2		Printed Name Peggy Cole	
LOT 1		Title Regulatory Supervisor	
LOT 4		Date 2-6-01	
LOT 5		18 SURVEYOR CERTIFICATION	
FD 3 1/2" BLM 1969 B.C.		I hereby certify that the well location shown on this plat was plotted from field notes of actual surveys made by me or under my supervision, and that the same is true and correct to the best of my belief.	
JESSIE MAUDE KEY		Date of Survey 11-14-2000	
GEORGE F BRUINGTON, ET UX		Signature and Seal of Professional Surveyor <i>[Signature]</i>	
LOT 6		Certificate Number 8894	
LOT 7			
LOT 8			
LOT 9			
LAT: 36°47.6' N. LONG: 108°01.2' W.			
FD 3 1/2" BLM 1969			
S 89°25'16" E			
2663.33' (M)			
FD 3 1/2" BLM 1969			
S 89°49'38" E			
2663.33' (M)			
FD 3 1/2" BLM 1969			
BRASS CAP			

BURLINGTON RESOURCES OIL & GAS, INC.

MORRIS A #1R

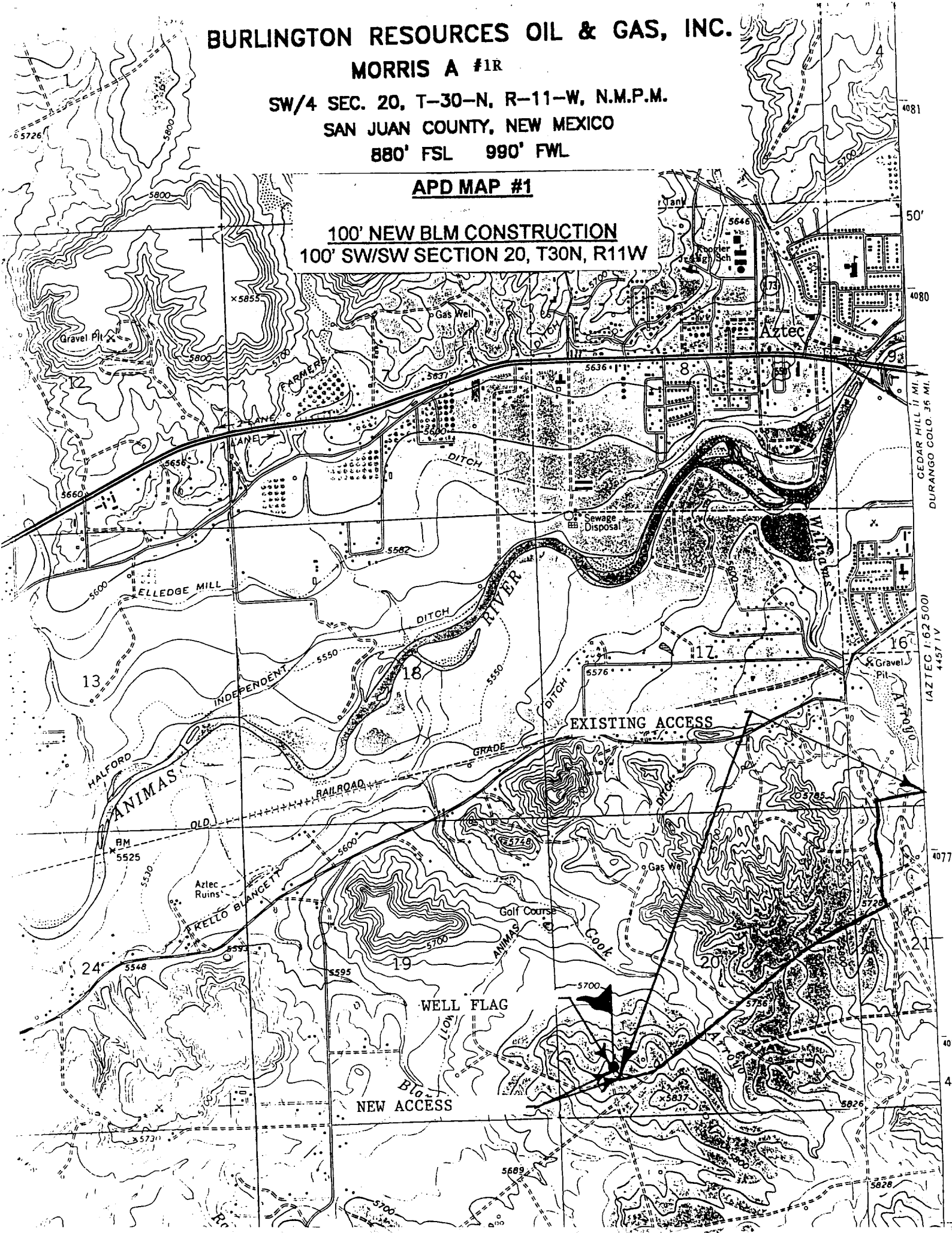
SW/4 SEC. 20, T-30-N, R-11-W, N.M.P.M.

SAN JUAN COUNTY, NEW MEXICO

880' FSL 990' FWL

APD MAP #1

100' NEW BLM CONSTRUCTION
100' SW/SW SECTION 20, T30N, R11W



OPERATIONS PLAN

Well Name: Morris A #1R
Location: 880' FSL, 990' FWL Section 20, T-30-N, R-11-W
Latitude 36° 47.6' N, Longitude 108° 01.2' W
San Juan County, NM
Formation: Basin Fruitland Coal/Blanco Pictured Cliffs
Elevation: 5787' GL

Formation:	Top	Bottom	Contents
Surface	San Jose	685'	
Ojo Alamo	685'	775'	aquifer
Kirtland	775'	1799'	gas
Fruitland	1799'	2109'	gas
Pictured Cliffs	2109'	2309'	gas
Total Depth	2309'		

Logging Program: Platform Express from TD to surface.
Mudlog: 2 Man unit from Ojo Alamo to TD.
Coring Program: none

Mud Program:

Interval	Type	Weight	Vis.	Fluid Loss
0-120'	Spud	8.4-9.0	40-50	no control
120-2309'	Non-dispersed	8.4-9.5	30-60	no control

Casing Program (as listed, the equivalent, or better):

Hole Size	Depth Interval	Csg. Size	Wt.	Grade
8 3/4"	0' - 120'	7"	20.0#	J-55
6 1/4"	0' - 2309'	4 1/2"	10.5#	K-55

Tubing Program:

0' - 2309'	2 3/8"	4.7#	J-55
------------	--------	------	------

Float Equipment: 7" surface casing - saw tooth guide shoe. Centralizers will be run in accordance with Onshore Order #2.

4 1/2" production casing - guide shoe and self-fill float collar. Three centralizers run every fourth joint above shoe. Two turbolizing type centralizers - one below and one into the base of the Ojo Alamo @ 775'. Standard centralizers thereafter every fourth joint up to the base of the surface pipe.

Wellhead Equipment: 7" x 4 1/2" x 2 3/8" x 11" 2000 psi xmas tree assembly.

Morris A #1R

Cementing:

7" surface casing - cement with 46 sx Class "B" cement with 1/4# flocele/sx and 3% calcium chloride (54 cu.ft. of slurry, 200% excess to circulate to surface). WOC 8 hrs. Test casing to 600 psi/30 minutes.

4 1/2" production casing - Lead w/139 sacks Class "G" TXI lightweight cmt with 2.5%/sx sodium metasilicate, 0.5 pps flocele, 10 pps gilsonite, 2% calcium chloride, and 0.2% antifoam agent. Tail with 90 sacks 50/50 Class "G" Pozmix with 2% gel, 2% calcium chloride, 1/4#/sack flocele, 5 pps gilsonite, and 0.1% antifoam agent (474 cu.ft., 100% excess to circulate to surface).

Note: If open hole logs are run, cement volumes will be based on 25% excess over caliper volumes.

BOP and tests:

Surface to TD - 11" 2000 psi (minimum) double gate BOP stack (Reference Figure #1). Prior to drilling out surface casing, test rams to 600#/30 min.

Completion - 7 1/6" 2000 psi (minimum) double gate BOP stack (Reference Figure #2). Prior to completion operations, test blind rams and casing to 1500 psi for 30 minutes; all pipe rams and casing to 1500 psi for 30 minutes each.

From surface to TD - choke manifold (Reference Figure #3).

Pipe rams will be actuated at least once each day and blind rams actuated once each trip to test proper functioning. An upper kelly cock valve with handle and drill string safety valves to fit each drill string will be maintained and available on the rig floor.

Additional information:

- * The Fruitland Coal and Pictured Cliffs formations will be completed and commingled.
- * Anticipated pore pressure for the Fruitland is 570 psi.
- * Anticipated pore pressure for the Pictured Cliffs is 500 psi.
- * This gas is dedicated.
- * The south half of section 20 is dedicated to the Fruitland Coal. The southwest quarter of section 20 is dedicated to the Pictured Cliffs.

Date: 2/7/01

Drilling Engineer:

Em J. Gile