

NO. OF COPIES RECEIVED	
DISTRIBUTION	
SANTA FE	
FILE	
U.S.G.S.	
LAND OFFICE	
OPERATOR	

NEW MEXICO OIL CONSERVATION COMMISSION

Form C-101
Revised 1-1-65

5A. Indicate Type of Lease
STATE ☒ FEE ☐
5. State Oil & Gas Lease No.
E6714

APPLICATION FOR PERMIT TO DRILL, DEEPEN, OR PLUG BACK

1a. Type of Work b. Type of Well OIL WELL <input type="checkbox"/> GAS WELL <input checked="" type="checkbox"/> OTHER <input type="checkbox"/> DEEPEN <input type="checkbox"/> PLUG BACK <input type="checkbox"/> SINGLE ZONE <input type="checkbox"/> MULTIPLE ZONE <input checked="" type="checkbox"/>				7. Unit Agreement Name	
2. Name of Operator Tenneco Oil Company				8. Farm or Lease Name State 36	
3. Address of Operator 720 So. Colorado Blvd., Denver, Colorado 80222				9. Well No. 2E	
4. Location of Well UNIT LETTER 0 LOCATED 930 FEET FROM THE South LINE AND 1650 FEET FROM THE East LINE OF SEC. 36 TWP. 30N RGE. 14W NMPM				10. Field and Pool, or Wildcat P.C., Fruitland, Dakota	
				12. County San Juan	
				19. Proposed Depth 6150'	
				19A. Formation PC, Fruitland, DK	
				20. Rotary or C.T. Rotary	
21. Elevations (Show whether DF, RT, etc.) 5573 GR		21A. Kind & Status Plug. Bond Nation wide		21B. Drilling Contractor Four Corners	
				22. Approx. Date Work will start 9/15/80	

23.

PROPOSED CASING AND CEMENT PROGRAM

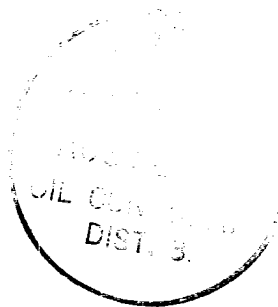
SIZE OF HOLE	SIZE OF CASING	WEIGHT PER FOOT	SETTING DEPTH	SACKS OF CEMENT	EST. TOP
12 1/4"	9 5/8" new	36#	±600'	Cement to surface	
7 7/8"	5 1/2" new	15.5#	±6150'	Cement to surface - two stages	

See attached.

APPROVAL VALID
FOR 90 DAYS UNLESS
DRILLING COMMENCED,

EXPIRES 11-12-80

The gas is dedicated.



IN ABOVE SPACE DESCRIBE PROPOSED PROGRAM: IF PROPOSAL IS TO DEEPEN OR PLUG BACK, GIVE DATA ON PRESENT PRODUCTIVE ZONE AND PROPOSED NEW PRODUCTIVE ZONE. GIVE BLOWOUT PREVENTER PROGRAM, IF ANY.

I hereby certify that the information above is true and complete to the best of my knowledge and belief.

Signed M.L. Freeman Title Staff Production Analyst Date August 11, 1980

(This space for State Use)

SUPERVISOR (PRINT #)

APPROVED BY Frank T. Cary TITLE DATE AUG 14 1980

CONDITIONS OF APPROVAL, IF ANY:

write NW 1/4 Fruit PC Valid C104 for communication

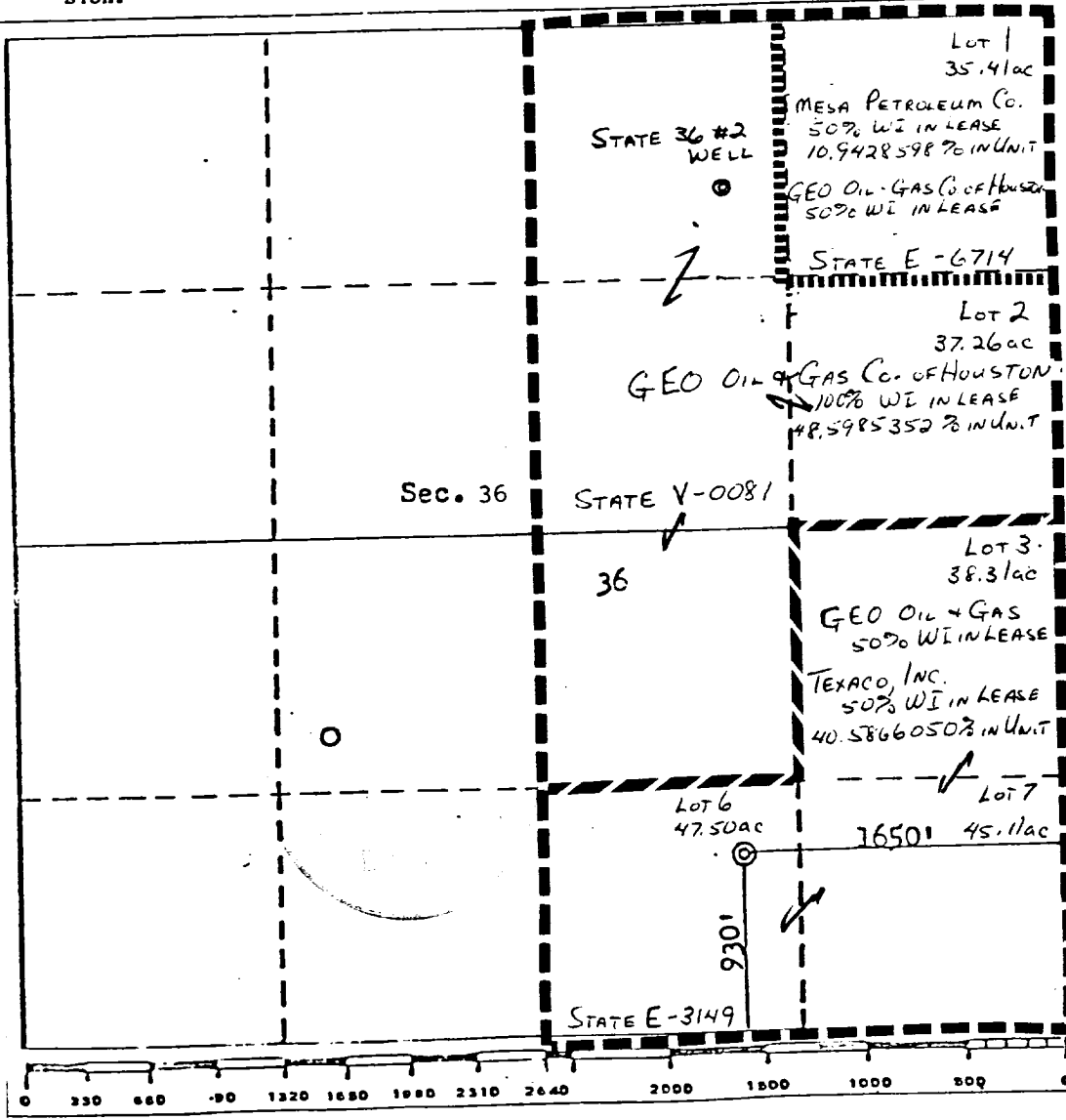
All distances must be from the outer boundaries of the Section.

Operator TENNECO OIL COMPANY		Lease STATE 36		Well No. 2E
Unit Letter 0	Section 36	Township 30N	Range 11W	County San Juan
Actual Footage Location of Well: 930 feet from the South line and 1650 feet from the East line				
Ground Level Elev. 5573	Producing Formation Dakota	Pool Basin Dakota		Dedicated Acreage: 323.59 Acres

1. Outline the acreage dedicated to the subject well by colored pencil or hachure marks on the plat below.
2. If more than one lease is dedicated to the well, outline each and identify the ownership thereof (both as to working interest and royalty).
3. If more than one lease of different ownership is dedicated to the well, have the interests of all owners been consolidated by communitization, unitization, force-pooling, etc?

☒ Yes ☐ No If answer is "yes," type of consolidation communitization in progress

If answer is "no," list the owners and tract descriptions which have actually been consolidated. (Use reverse side of this form if necessary.)
No allowable will be assigned to the well until all interests have been consolidated (by communitization, unitization, forced-pooling, or otherwise) or until a non-standard unit, eliminating such interests, has been approved by the Commission.



CERTIFICATION	
I hereby certify that the information contained herein is true and complete to the best of my knowledge and belief.	
Name	<u>M. L. Freeman</u>
Position	<u>Staff Production Analyst</u>
Company	<u>Tenneco Oil Company</u>
Date	<u>August 11, 1980</u>
I hereby certify that the well location shown on this plat was plotted from field notes of actual surveys made by me or under my supervision, and that the same is true and correct to the best of my knowledge and belief.	
Date Surveyed	<u>Aug 11 1980</u>
Registered Professional Engineer and/or Land Surveyor	<u>Fred B. Merritt Jr.</u>
Certificate No.	<u>3950</u>

Operator TENNECO OIL COMPANY		Lease STATE 36		Well No. 2E
Unit Letter 0	Section 36	Township 30N	Range 11W	County San Juan
Actual Footage Location of Well:				
930	feet from the South	line and	1650	feet from the East
Ground Level Elev. 5573	Producing Formation P.C., Fruitland	Pool Harper Hill	Dedicated Acreage: 170.92 Acres	

1. Outline the acreage dedicated to the subject well by colored pencil or hatchure marks on the plat below.

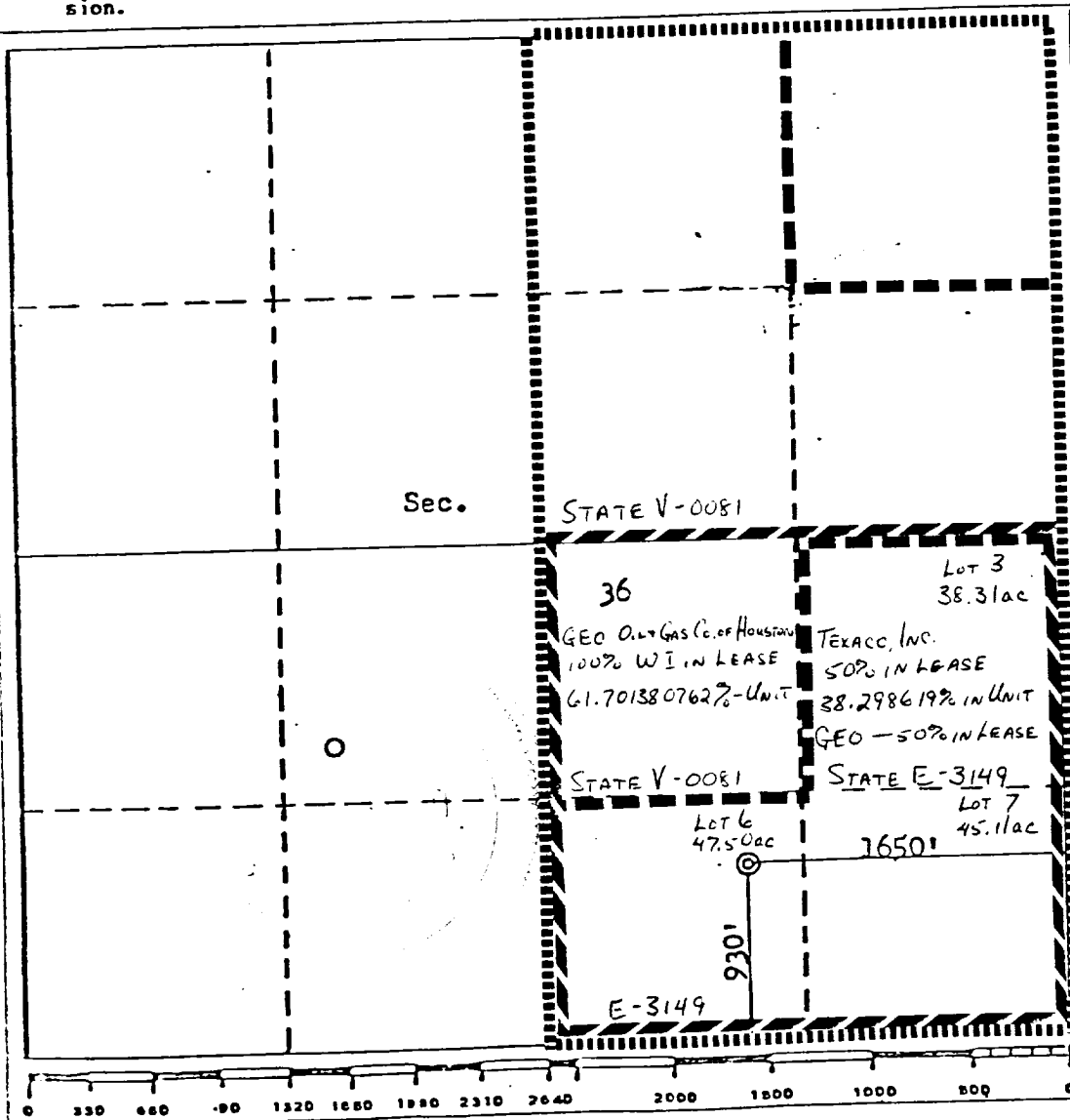
2. If more than one lease is dedicated to the well, outline each and identify the ownership thereof (both as to working interest and royalty).

3. If more than one lease of different ownership is dedicated to the well, have the interests of all owners been consolidated by communitization, unitization, force-pooling, etc?

☒ Yes ☐ No If answer is "yes," type of consolidation communitization in progress

If answer is "no," list the owners and tract descriptions which have actually been consolidated. (Use reverse side of this form if necessary.)

No allowable will be assigned to the well until all interests have been consolidated (by communitization, unitization, forced-pooling, or otherwise) or until a non-standard unit, eliminating such interests, has been approved by the Commission.



CERTIFICATION

I hereby certify that the information contained herein is true and complete to the best of my knowledge and belief.

M. L. Freeman
Name

M. L. Freeman

Position

Staff Production Analyst

Company

Tenneco Oil Company

Date

August 11, 1980

I hereby certify that the well location shown on this plat was plotted from field notes of actual surveys made by me or under my supervision, and that the same is true and correct to the best of my knowledge and belief.

Date Surveyed

Registered Professional Engineer

and/or Land Surveyor

Fred B. Herr Jr.

Cert. No.

3950

TENNECO OIL COMPANY - 10 POINT PLAN

1. The geological name of the surface formation:
- 2 & 3. Estimated Formation Tops:

(See Attached Drilling Procedure)
4. Proposed Casing Program:

(See Attached Drilling Procedure)
5. Blowout Preventors:
Hydraulic double ram. One set of rams will be provided each size drill pipe in the hole. One set of blind rams at all times. Fill line will be 2", kill line will be 2", choke relief line will be 2". BOP's, drills and tests will be recorded in the driller's log. BOP will be tested every 24 hours and recorded in IADC Log.
6. Mud Program: (Sufficient quantity of mud and weight material will be available on location).

(See Attached Drilling Procedure.)
7. Auxiliary Equipment:
 - a. Kelly cock will be in use at all times.
 - b. Stabbing valve to fit drill pipe will be present on floor at all times.
 - c. Mud monitoring will be visual. No abnormal pressures are anticipated.
 - d. Floats at bits.
 - e. Drill string safety valve(s) to fit all pipe in drill string will be maintained on the rig floor while drilling operations are in progress.
8. Coring, Logging, and Testing Program:

(See Attached Drilling Procedure)
9. No abnormal pressures, temperatures or potential hazards such as H₂S are expected to be encountered.
10. The drilling of this well will start approximately (9-15-80) and continue for 10 to 12 days.

▼

Your office will be notified of spudding in sufficient time to witness cementing operations. Immediate notice will be given on blowouts, fires, spills, and accidents involving life threatening injuries or loss of life. Prior approval will be obtained before appreciably changing drilling program or commencing plugging operations, plug back work, casing repair work or corrective cementing operations.

TENNECO OIL COMPANY
ROCKY MOUNTAIN DIVISION
PENTHOUSE, 720 SOUTH COLORADO BOULEVARD
DENVER, COLORADO 80222

DRILLING PROCEDURE

DATE: July 2, 1980

LEASE: State 36

WELL NO.: 2-E

LOCATION: 790' FSL, 1650' FEL
Sec. 36, T 30N, R 14W
San Juan County, New Mexico

FIELD: San Juan Basin

ELEVATION: 5560' Est. G.L.

TOTAL DEPTH: 6150'

PROJECTED HORIZON: Dual 1) Fruitland & Pictured Cliffs (Comingle)
2) Dakota

SUBMITTED BY:

Tom Dunning

DATE:

7/2/80

APPROVED BY:

B. Bamer

DATE:

7/16/80

TD/ms

CC: Administration
DSB Well File
Field File

ESTIMATED FORMATION TOPS

Fruitland	200'	(Gas)
Pictured Cliffs	1240'	(Gas)
Lewis	1420'	
Cliff House	2790'	(Water)
Menefee	2920'	(Water)
Point Lookout	3600'	(Water)
Mancos	4040'	
Gallup	4980'	(Oil)
Greenhorn	5740'	
Dakota	5840'	(Gas)
T.D.	6150'	

DRILLING, CASING, AND CEMENT PROGRAM

1. Move in rotary tools.
2. Drill a 12-1/4" hole to \pm 600'
3. Run 9-5/8", 36#, K-55, ST&C casing to T.D. Equip casing with a Texas Pattern guide shoe, float collars, and two centralizers.
4. Cement 9-5/8" casing with Class "B" with 2% CaCl₂ with sufficient volume to circulate cement to surface. WOC a minimum of 12 hours.
5. Cut casing, set slips. Nipple up casing head, BOP's, and manifold. Pressure test blind rams and manifold to 1000 psi for 30 minutes.
6. Drill out shoe to \pm 4200' with an 8-3/4" bit. Reduce hole size to 7-7/8" if no lost circulation problems occur. Drill to T.D. at 6150'.
7. Log hole as per G. E. Department.
8. If productive, run 5-1/2", 15.5#, K-55, ST&C casing to T.D. Cement in two stages with Class "B" with sufficient volume to cover all productive intervals. Place DV at \pm 2700'. Cement second stage back to surface. Place cement baskets across Menefee.
9. If non-productive, P & A according to USGS and State Regulations.
10. RD MORT.

CASING PROGRAM

<u>String</u>	<u>Interval</u>	<u>Length</u>	<u>Size</u>	<u>Weight</u>	<u>Grade</u>	<u>Coupling</u>
Surface:	0-600'	600'	9-5/8"	36#	K-55	ST&C
Production:	0-6150'	6150'	5-1/2"	15.5#	K-55	ST&C

MUD PROGRAM

0-600' Spud mud. Sufficient viscosity to run casing.
600'-T.D. Low solids, fresh water mud. WL below 15 cc.

EVALUATION

Cores and DST's: None.

Deviation Surveys:

1. Survey surface hole at 100' intervals. Maximum deviation is 1° per 100'.
2. From surface casing to T.D., surveys must be taken every 500', or each trip, whichever is first. Maximum deviation is 1° per 100'.

Samples: None.

Logs: SP-Induction, GR-CNL-FDC: From base Pictured Cliffs to surface.
GR-Induction, Density: T.D. to surface casing.

BLOWOUT EQUIPMENT

Nipple up and test BOP equipment from 300' to T.D. as per USGS and TOC requirements.

Preventers must be checked for operation every 24 hours and recorded on the IADC Daily Report.

REPORTS

Drilling reports for the past 24 hours will include depth, footage, time distribution, activity breakdown, mud properties, bit record, bottom hole assembly, daily and cumulative mud costs, plus any other pertinent information, will be called into Tenneco Oil Company, Denver, Colorado, between 7:30 a.m. and 8:00 a.m.

1. 303-758-7130 (Office) Don Barnes
303-758-7287 (Office) Don Barnes' private line, Monday-Friday (before 7:45 a.m.)
303-936-0704 (Home) Don Barnes, weekends and holidays.
2. George Ramsey (Home) 303-771-5154.
3. John Owen (Home) 303-795-0221.

The yellow sheet of the IADC Report is to be filled out completely. The original copy of the drilling time recorder, and copies of any invoices from this well, signed and received for Tenneco Oil Company, will be mailed daily to:

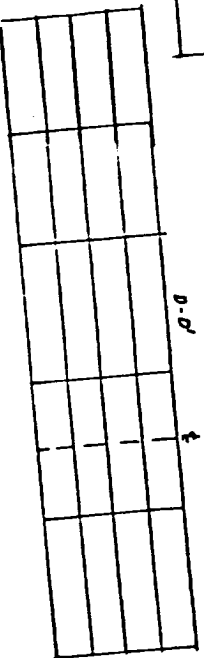
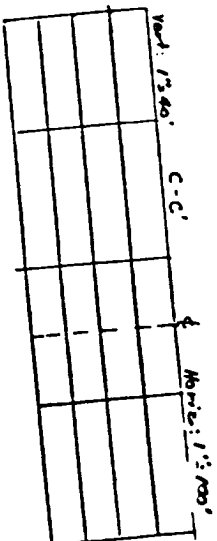
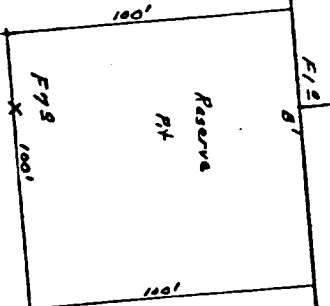
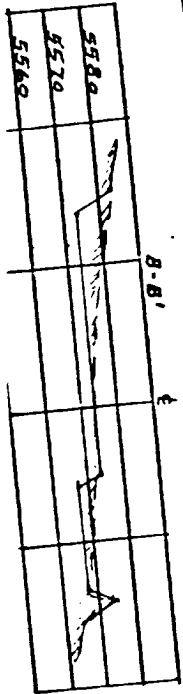
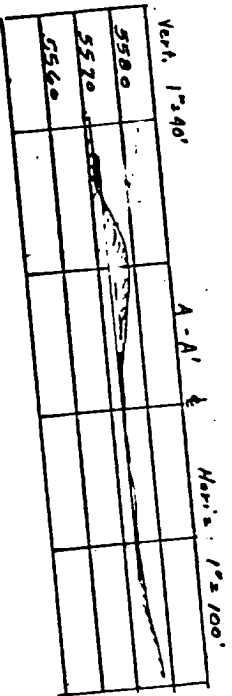
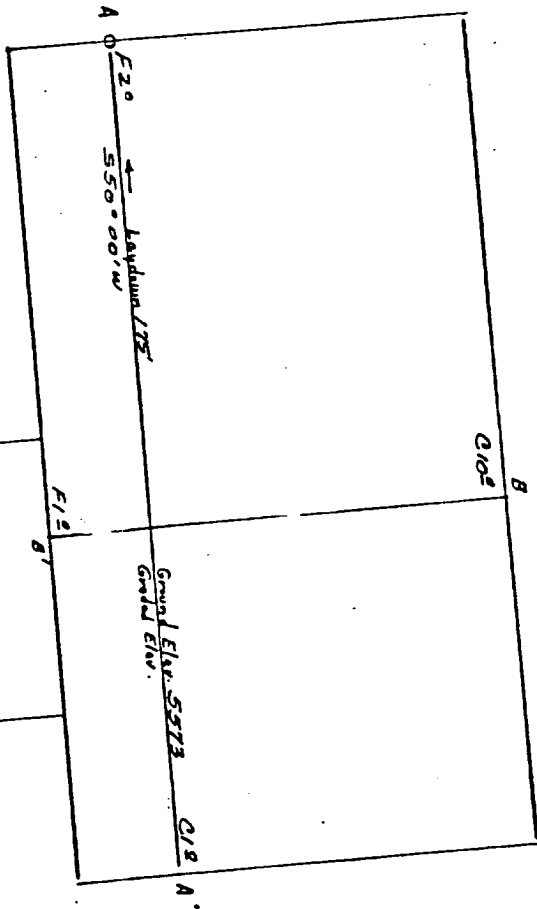
TENNECO OIL COMPANY
ROCKY MOUNTAIN DIVISION
PENTHOUSE, 720 SOUTH COLORADO BOULEVARD
DENVER, COLORADO 80222

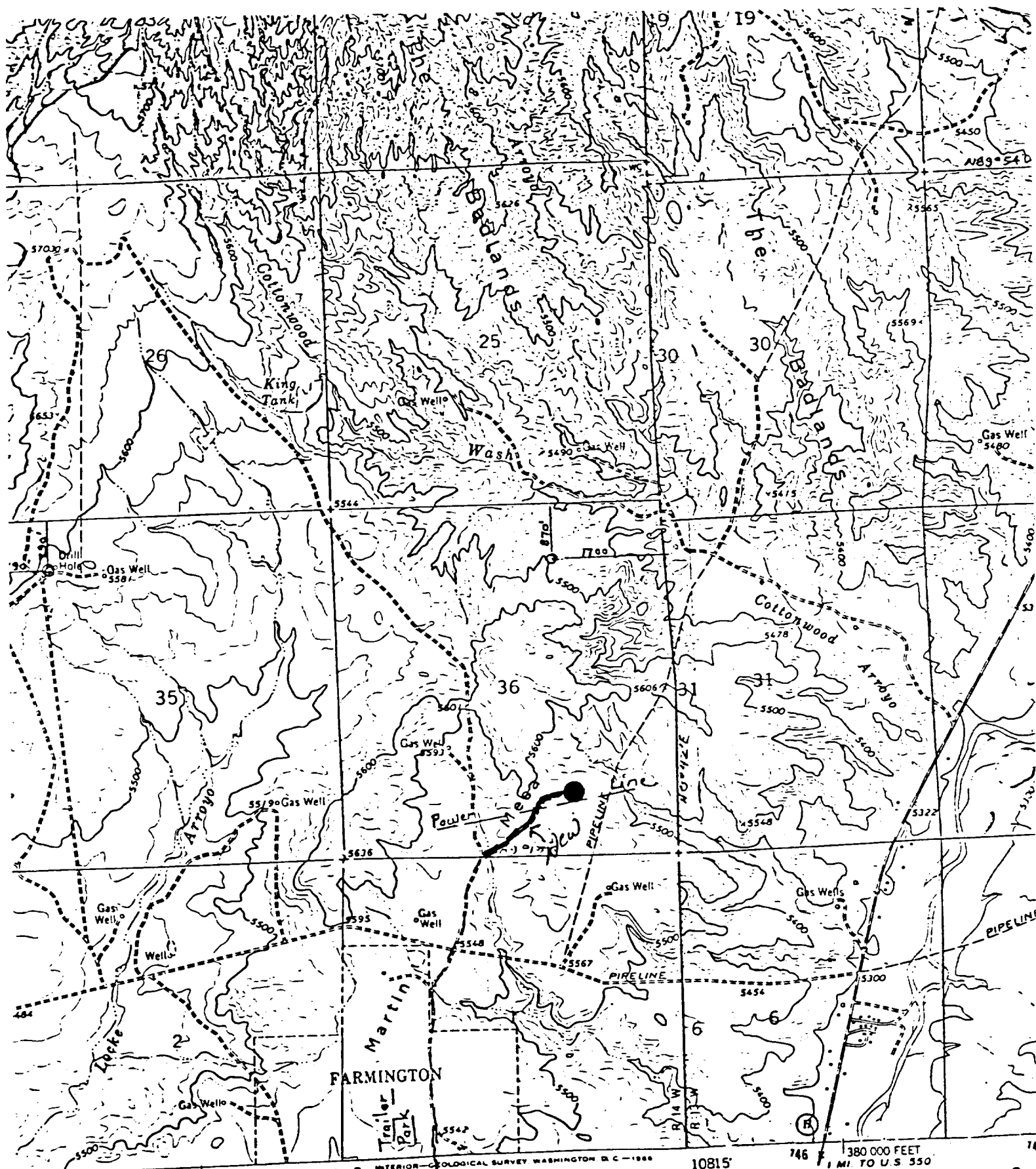
ATTENTION: Drilling Department

IN CASE OF EMERGENCY, NOTIFY THE FOLLOWING:

1. Mr. Don Barnes, Division Drilling Engineer.
2. Mr. George E. Ramsey, Jr., Drilling Engineers Supervisor
3. Mr. John W. Owen, Project Drilling Engineer.
4. Mr. Mike Lacey, Division Production Manager (Home 303-979-0509).

Location Profile for
 TENNECO OIL CO. #2E STATE 36
 930' FSL 1650' FEL Sec. 36-T30N-R11W
 SAN JUAN COUNTY, NEW MEXICO





HWY 550

ROAD CLASSIFICATION

Medium-duty

Light-duty

Unimproved dirt

Vicinity Map for

--- COUNTY AND STATE 26