

UNITED STATES  
DEPARTMENT OF THE INTERIOR  
BUREAU OF LAND MANAGEMENT

APPLICATION FOR PERMIT TO DRILL, DEEPEN, OR PLUG BACK

1a. Type of Work DRILL		5. Lease Number NM-048576	
1b Type of Well GAS		6. If Indian, Name of Tribe or Allottee	
2. Operator (022521) TEXAKOMA OIL & GAS CORPORATION		7. Unit Agreement Name 30 015 -30641	
3. Address & Phone No. of Operator %A. R. KENDRICK BOX 516, AZTEC, NM 87410 (505) 334-2555		8. Farm or Lease Name Foothills C	
4. Location of Well 877' FNL 1044' FWL D-19-30N-12W		9. Well Number 2	
10. Field, Pool, or Wildcat (77200) Fulcher Kutz-Pictured Cliffs		11. Section, Township, & Range, Meridian, or Block D-19-30N-12W	
14. Distance in Miles from Nearest Town 0.25 miles west of 7000 block Foothills Drive		12. County SAN JUAN	13. State NEW MEXICO
15. Distance from Proposed Location	16. Acres in Lease	17. Acres Assigned to Well	

C. HARRADEN/ May 2, 2001

TEXAKOMA O & G CORP./ Foothills C # 2 APD

STIPULATION/CONDITION OF APPROVAL

In order to protect the integrity of the Ojo Alamo aquifer, minimum surface csg. depth of 614' is stipulated as a condition of approval for this APD.

- |                                      |                                   |
|--------------------------------------|-----------------------------------|
| "A" Location and Elevation Plat      | "F" Location Profile              |
| "B" Vicinity Map - Access Roads      | "G" Drill Rig Layout              |
| "C" Ten-Point Compliance Program     | "H" Completion Rig Layout         |
| "D" Multi-Point Requirements for APD | "I" Production Facility Schematic |
| "E" Blowout Preventer Schematic      |                                   |

24. Signed [Signature] Title \_\_\_\_\_ Agent \_\_\_\_\_ Date 04/16/01

Permit No. \_\_\_\_\_ Approval Date \_\_\_\_\_

Approved By /s/ Lee Otterl Title \_\_\_\_\_ Date JUN 21

NOTE: THIS FORMAT IS ISSUED IN LIEU OF U.S. BLM FORM 3160-3.

NMOCD

5  
7

5  
7

STATE OF NEW MEXICO  
Energy, Minerals & Mining Resources Department

OIL CONSERVATION DIVISION  
2040 South Pacheco  
Santa Fe, NM 87505

☐ AMENDED REPORT

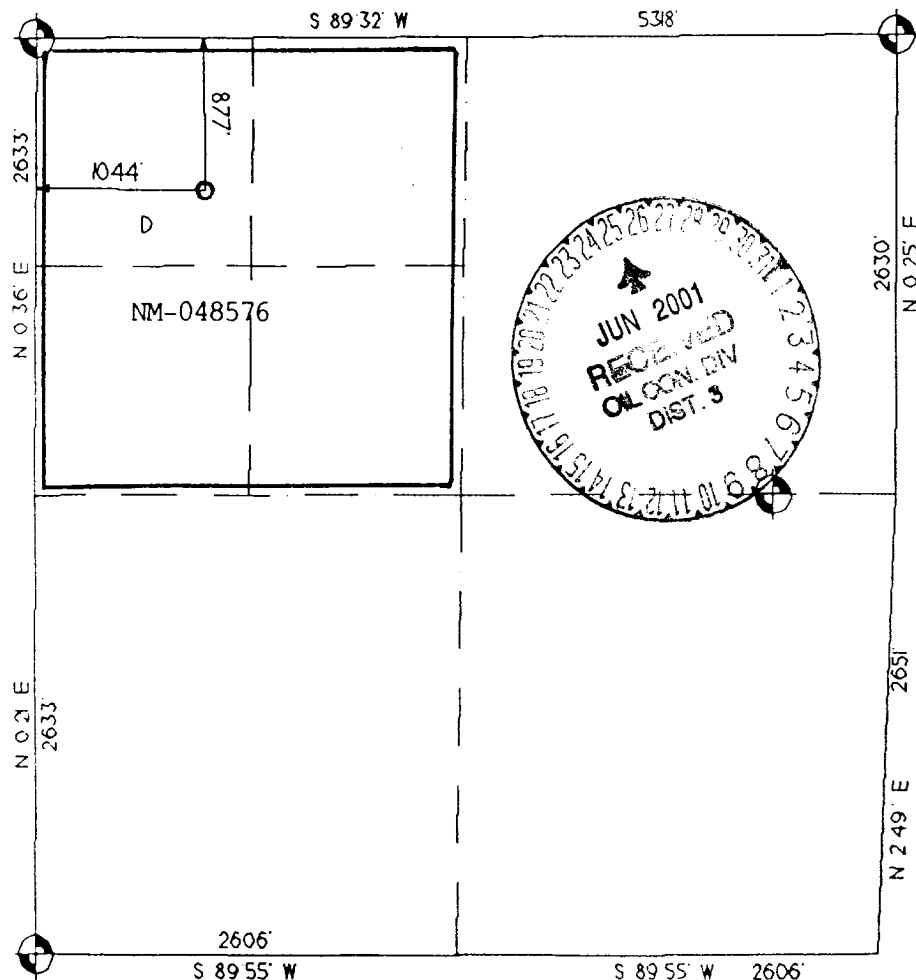
WELL LOCATION AND ACREAGE DEDICATION PLAT

APA Number 30-045-30641	Pool Code 77200	Pool Name Fulcher Kutz-Pictured Cliffs
Property Code 11242	Property Name Foothills C	Well Number 2
GRID No. 22521	Operator Name TEXAKOMA OIL & GAS CORPORATION	Elevation 5890'

Surface Location									
UL or Lot D	Sec. 19	Twp. 30 N.	Rge. 12 W.	Lot Ldn.	Feet From 877	North/South NORTH	Feet From 1044	East/West WEST	County SAN JUAN

Bottom Hole Location If Different From Surface									
UL or Lot	Sec.	Twp.	Rge.	Lot Ldn.	Feet From	North/South	Feet From	East/West	County
Dedication 158.64	Joint ? N	Consolidation		Order No.					

NO ALLOWABLE WILL ASSIGNED TO THIS COMPLETION UNTIL ALL INTERESTS HAVE BEEN CONSOLIDATED  
OR A NON-STANDARD UNIT HAS BEEN APPROVED BY THE DIVISION



OPERATOR CERTIFICATION  
I hereby certify that the information contained herein is true and complete to the best of my knowledge and belief.

Signature

*A. R. Kendrick*

Printed Name

A. R. Kendrick

Title

Agent

Date

04/02/01

SURVEYOR CERTIFICATION

I hereby certify that the well location on this plat was plotted from field notes of actual surveys made by me or under my supervision, and that the same is true and correct to the best of my belief.

Date of Survey

13 March 2001

Signature

Professional

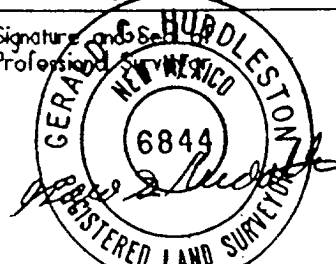
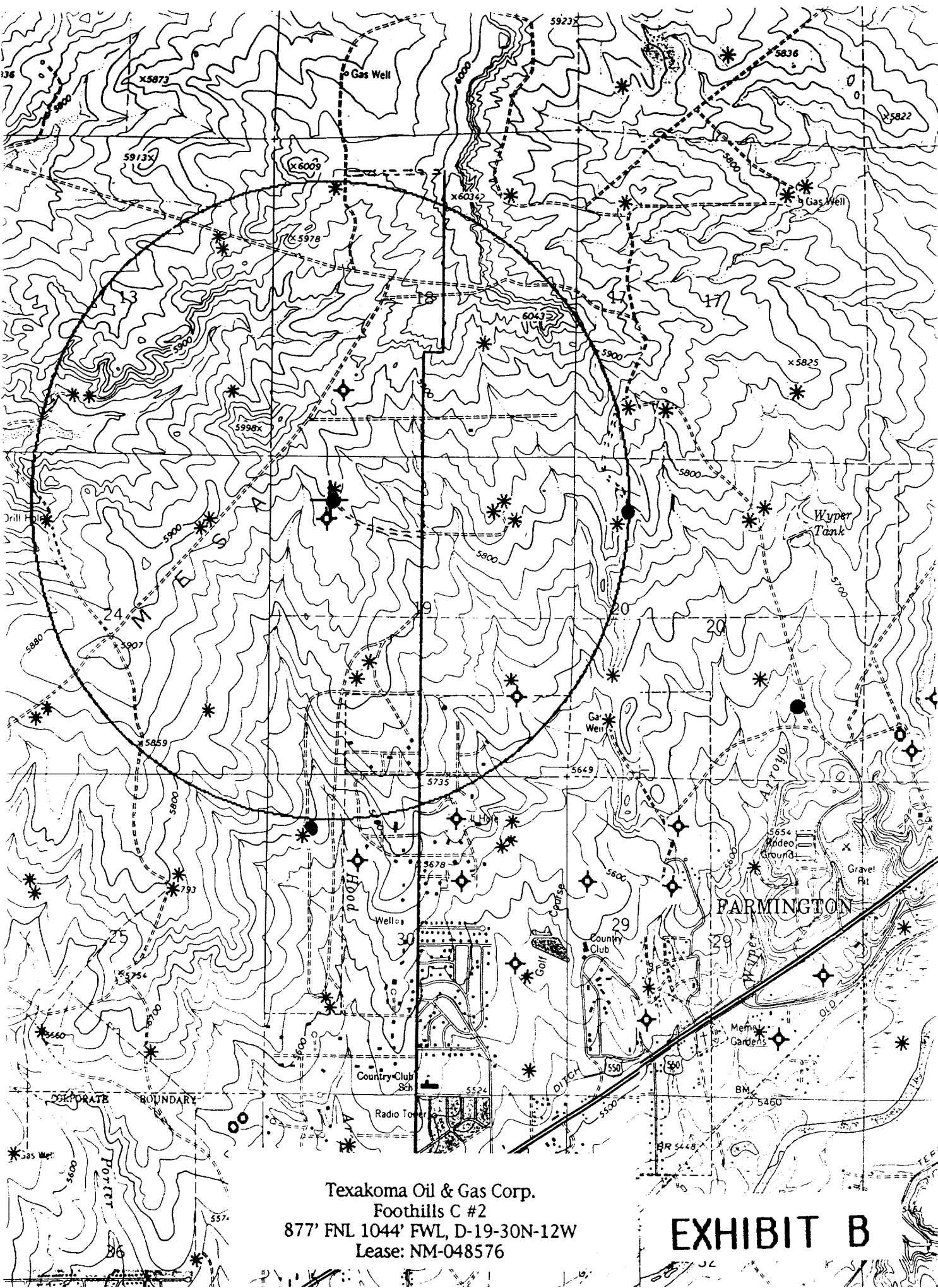


EXHIBIT A







**TEN-POINT PROGRAM**  
**Texakoma Oil & Gas Corporation**  
**Foothills C #2**  
**877' FNL 1044' FWL, D-19-30N-12W**  
**San Juan County, New Mexico**  
**Lease No. NM-048576**

1. THE GEOLOGICAL SURFACE FORMATION IS: Nacimiento.
2. THE TOPS OF IMPORTANT GEOLOGICAL MARKERS: (BASED ON EXISTING LOG INFORMATION)

Kirtland	550'
Fruitland	1650'
Pictured Cliffs	2000'
Total Depth	2150'

3. ESTIMATED DEPTHS OF ANTICIPATED WATER, OIL, GAS OR MINERALS:

<u>SUBSTANCE</u>	<u>FORMATION</u>	<u>ANTICIPATED DEPTH</u>
Gas	Pictured Cliffs	2000'

4. THE CASING PROGRAM:

<u>DEPTH</u>	<u>HOLE SIZE</u>	<u>CASING O.D.</u>	<u>WEIGHT</u>	<u>GRADE</u>	<u>TYPE</u>	<u>NEW/USED</u>
<del>0-175'</del> 614'	8-3/4"	7"	20#	J-55	ST&C	NEW
0-2150'	6-1/4"	4-1/2"	10.5#	J-55	ST&C	NEW

PROPOSED CEMENT PROGRAM: To effectively isolate and seal off all water, oil gas and coal-bearing strata encountered by the utilization of spacers, centralizers and swirling centralizers at the base of the Ojo Alamo formation as specified by NTL-FRA 90-1 III.B and API standards; and by using cement volumes as follows: (Exact volumes to be determined from logs.)

SURFACE: 55 Cu Ft (60 Sx) Class B w/0.25# Flocele/Sx plus 2% CaCl (100% Excess). *circ*

PRODUCTION: 85 Cu Ft (42 Sx Light standard cement w/2% Metasylicate + 0.25 pps Flocele mixed to 12.4 ppg followed by 162 Cu Ft (134 Sx) Standard w/0.6% Halad-322 mixed to 15.6 ppg w/caliper plus 25% excess in both slurries. Grand Totals: 247 Cu Ft (176 Sx). *TOL to at least 614'*

5. OPERATOR'S MINIMUM SPECIFICATIONS FOR PRESSURE CONTROL:

Exhibit E is a schematic of the blowout preventer used by a local contractor for other wells in the area.

The BOP to be used is an Annular BOP with screwed connections with high-pressure inlet and outlet hoses, all tested to 2000 psi minimum.

