

C. HARRADEN/ June 1, 2001 *CH*

TEXAKOMA O & G CORP./ Federal 18 # 1

STIPULATION/CONDITION OF APPROVAL

In order to protect the integrity of the Ojo Alamo aquifer, minimum surface csg. depth of 640' is stipulated as a condition of approval for this APD.

---



UNITED STATES  
DEPARTMENT OF THE INTERIOR  
BUREAU OF LAND MANAGEMENT

APPLICATION FOR PERMIT TO DRILL, DEEPEN, OR PLUG BACK

1a. Type of Work DRILL		5. Lease Number NM-047	
1b Type of Well GAS		6. If Indian, Name of Tribe or Allottee	
2. Operator (022521) TEXAKOMA OIL & GAS CORPORATION		7. Unit Agreement Name 29138	
3. Address & Phone No. of Operator %A. R. KENDRICK BOX 516, AZTEC, NM 87410 (505) 334-2555		8. Farm or Lease Name FEDERAL 18 #1	
4. Location of Well 763' FNL 1347' FEL B-18-30N-12W		9. API Number 30-045-30674	
10. Field, Pool, or Wildcat (71629) Basin Fruitland Coal		11. Section, Township, & Range, Meridian, or Block B NW/4 NE/4 B-18-30N-12W	
12. County SAN JUAN		13. State NEW MEXICO	
14. Distance in Miles from Nearest Town Inside Farmington City Limits		15. Distance from Proposed Location To Nearest Property Line or Lease Line. 660'	
16. Acres in Lease 1530.80		17. Acres Assigned to Well N-318.84	
18. Distance From Proposed Location To Nearest Well Dr, Compl., Or Applied For On Lease. 455'		19. Proposed Depth 2200'	
20. Rotary or Cable Tools ROTARY		21. Elevations (DF, RT, GR, Etc.) 5920' GR	
22. Approximate Date Work Will Start. SUMMER, 2001			

23. Proposed Casing and Cementing Program:

Exhibits attached as follows: This action is subject to technical and procedural review pursuant to 43 CFR 3165.3 and appeal pursuant to 43 CFR 3165.4.

- |                                      |                                   |
|--------------------------------------|-----------------------------------|
| "A" Location and Elevation Plat      | "F" Location Profile              |
| "B" Vicinity Map - Access Roads      | "G" Drill Rig Layout              |
| "C" Ten-Point Compliance Program     | "H" Completion Rig Layout         |
| "D" Multi-Point Requirements for APD | "I" Production Facility Schematic |
| "E" Blowout Preventer Schematic      |                                   |

24. Signed AR Kendrick Title \_\_\_\_\_ Agent \_\_\_\_\_ Date MAY 23 2001

Permit No. \_\_\_\_\_ Approval Date 12/13/01

Approved By DJ Mankiewicz Title AFM Date 12/13/01

NOTE: THIS FORMAT IS ISSUED IN LIEU OF U.S. BLM FORM 3160-3.



State of New Mexico  
Energy, Minerals & Mining Resources Department  
OIL CONSERVATION DIVISION  
P. O. Box 6429  
Santa Fe, New Mexico 87504-6429

Form C-102

☐ AMENDED REPORT

WELL LOCATION AND ACREAGE DEDICATION PLAT

API Number 30-045-30674	Pool Code 71629	Pool Name Basin Fruitland Coal
Property Code 29138	Property (Well) Name Federal 18	Well Number 1
OGRID No. 022521	Operator Name Texakoma Oil & Gas Corporation	Elevation 5920'

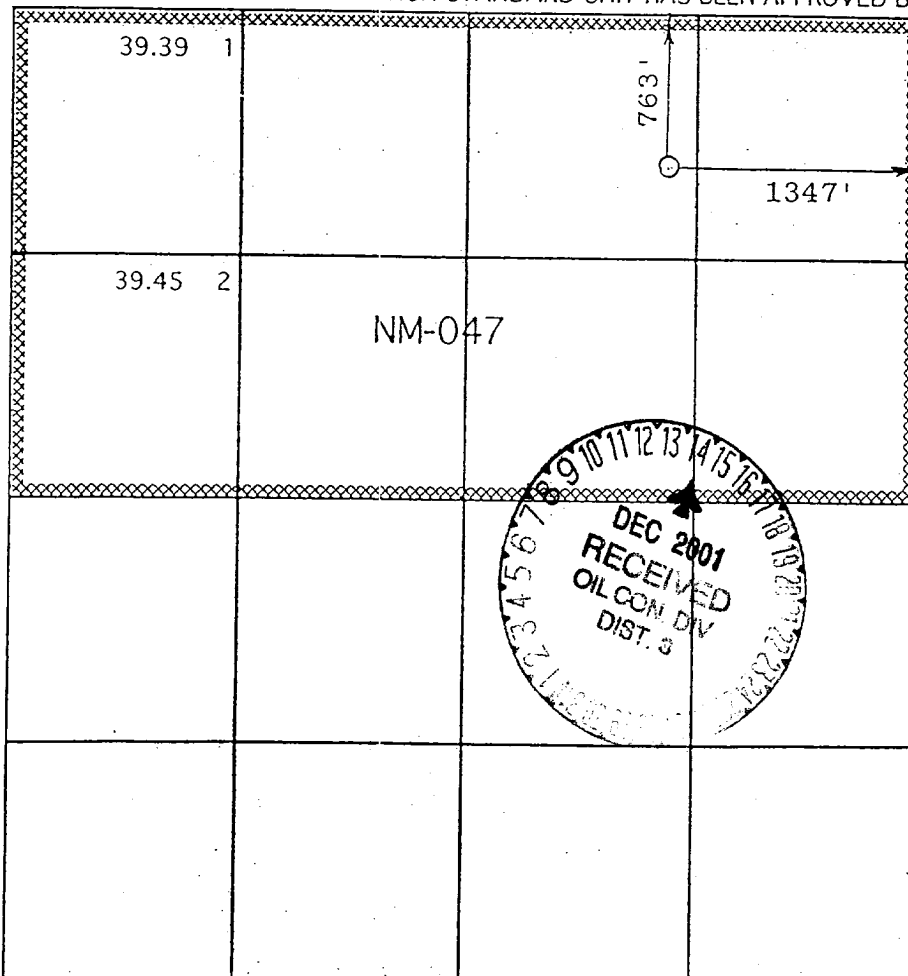
Surface Location

UL or Lot B	Sec. 18	Twp. 30 N	Rge. 12 W	Lot Idn.	Feet from > 763	North/South North	Feet from > 1347	East/West East	County San Juan
----------------	------------	--------------	--------------	----------	--------------------	----------------------	---------------------	-------------------	--------------------

Bottom Hole Location If Different From Surface

UL or Lot	Sec.	Twp.	Rge.	Lot Idn.	Feet from >	North/South	Feet from >	East/West	County
Dedication N-318.84	Joint? N	Consolidation	Order No.						

NO ALLOWABLE WILL BE ASSIGNED TO THIS COMPLETION UNTIL ALL INTERESTS HAVE BEEN CONSOLIDATED  
OR A NON-STANDARD UNIT HAS BEEN APPROVED BY THE DIVISION



OPERATOR CERTIFICATION

I hereby certify that the information contained herein is true and complete to the best of my knowledge and belief.

Signature

*A.L.R. Kendrick*

Printed Name  
A.L.R. Kendrick

Title  
Agent

Date  
MAY 23 2001

SURVEYOR CERTIFICATION

I hereby certify that the well location on this plat was plotted from field notes of actual surveys made by me or under my supervision, and that the same is true and correct to the best of my belief.

Date of Survey

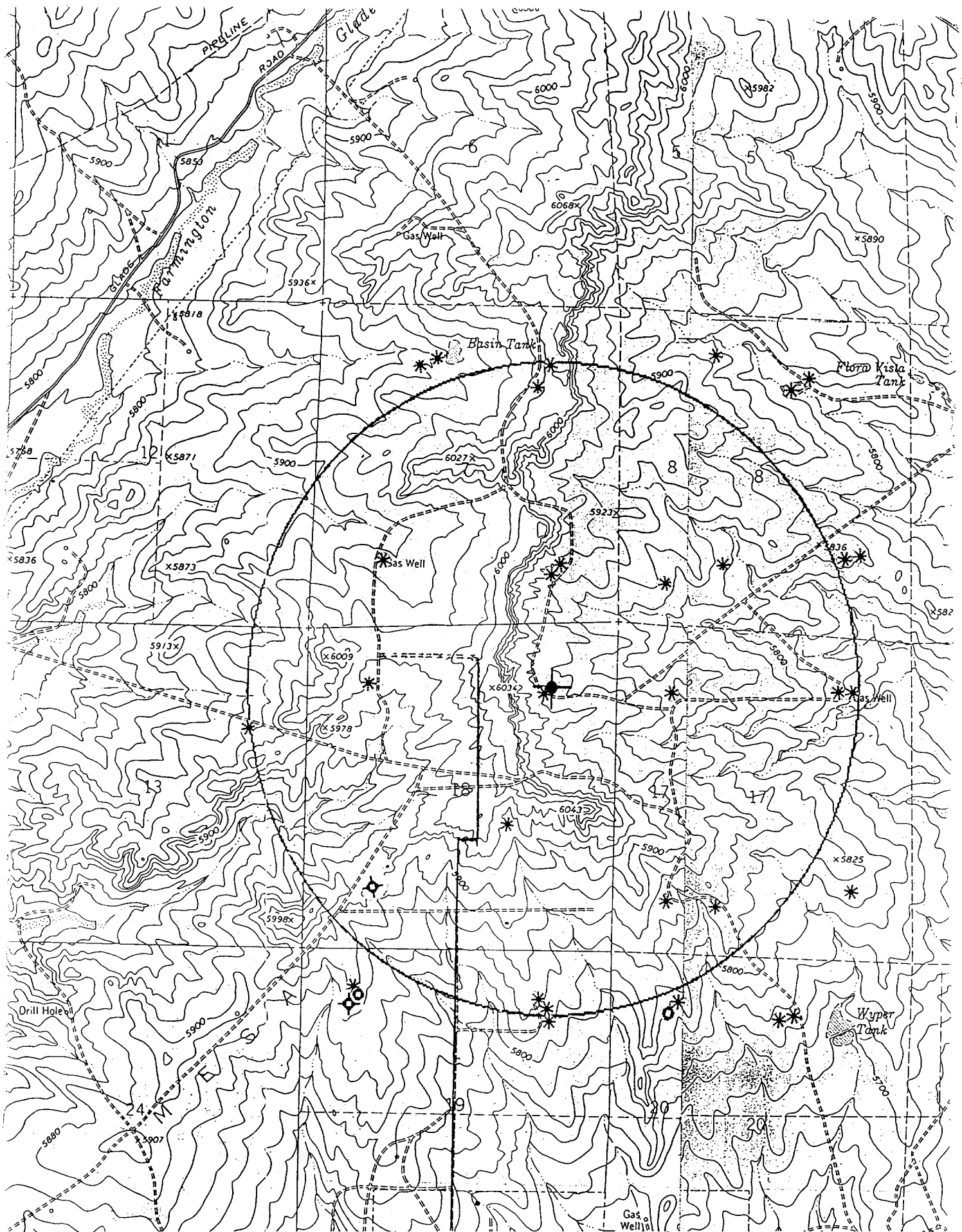
Signature and Seal of  
Professional Surveyor

*Robert D. Huddleston*

Certificate Number

EXHIBIT A





Texakoma Oil & Gas Corp.  
Federal 18 #1  
763' FNL 1347' FEL, B-18-30N-12W  
Lease No. NM-047

EXHIBIT B



**TEN-POINT PROGRAM**  
Texakoma Oil & Gas Corporation  
Federal 18 #1  
763' FNL 1347' FEL, B-18-30N-12W  
San Juan County, New Mexico  
Lease No. NM-047

1. THE GEOLOGICAL SURFACE FORMATION IS: Nacimiento.
2. THE TOPS OF IMPORTANT GEOLOGICAL MARKERS: (BASED ON EXISTING LOG INFORMATION)

Kirtland	500'
Fruitland Coal	1800'
Pictured Cliffs	1850'
Total Depth	2200'

3. ESTIMATED DEPTHS OF ANTICIPATED WATER, OIL, GAS OR MINERALS:

<u>SUBSTANCE</u>	<u>FORMATION</u>	<u>ANTICIPATED DEPTH</u>
Gas	Fruitland Coal	1850'

4. THE CASING PROGRAM:

<u>DEPTH</u>	<u>HOLE SIZE</u>	<u>CASING O.D.</u>	<u>WEIGHT</u>	<u>GRADE</u>	<u>TYPE</u>	<u>NEW/USED</u>
0- 500' <sup>640'</sup>	8-3/4"	7"	23#	J-55	ST&C	NEW
0-2200'	6-1/4"	4-1/2"	10.5#	J-55	ST&C	NEW

PROPOSED CEMENT PROGRAM: To effectively isolate and seal off all water, oil gas and coal-bearing strata encountered by the utilization of spacers, centralizers and swirling centralizers at the base of the Ojo Alamo formation as specified by NTL-FRA 90-1 III.B and API standards; and by using cement volumes as follows: (exact volumes to be determined from logs.)

SURFACE: 165 Cu Ft (150 Sx) Class "H" w/0.25# Flocele/Sx plus 2% CaCl (100% Excess). *Circulate*

PRODUCTION: 162 Cu Ft (82 Sx Light standard cement w/2% Metasylicate + 0.25 pps Flocele mixed to 12.4 ppg followed by 162 Cu Ft (134 Sx) Standard w/0.6% Halad-322 mixed to 15.6 ppg w/caliper plus 25% excess + 5#/Sk Gilsonite in both slurries. Grand Totals: 364 Cu Ft (216 Sx).  
*-Circulate*

5. OPERATOR'S MINIMUM SPECIFICATIONS FOR PRESSURE CONTROL:

Exhibit E is a schematic of the blowout preventer used by a local contractor for other wells in the area.

The BOP to be used is an Annular BOP with screwed connections with high-pressure inlet and outlet hoses, all tested to 2000 psi minimum.

