

UNITED STATES  
DEPARTMENT OF THE INTERIOR  
BUREAU OF LAND MANAGEMENT

APPLICATION FOR PERMIT TO DRILL OR DEEPEN

1a. TYPE OF WORK

DRILL ☒

DEEPEN ☐

b. TYPE OF WELL

OIL  
WELL ☐

GAS  
WELL ☒

OTHER

SINGLE  
ZONE ☐

MULTIPLE  
ZONE ☒

2. NAME OF OPERATOR

Cross Timbers Operating Company

3. ADDRESS AND TELEPHONE NO.

2700 Farmington Ave., Bldg. K, Ste 1 Farmington, NM 87401

4. LOCATION OF WELL (Report location clearly and in accordance with any State requirements.)  
At surface

790' FSL & 915' FWL

At proposed prod. zone

14. DISTANCE IN MILES AND DIRECTION FROM NEAREST TOWN OR POST OFFICE\*

Approx 7 miles northeast of the Blanco, NM Post Office

15. DISTANCE FROM PROPOSED\*  
LOCATION TO NEAREST  
PROPERTY OR LEASE LINE, FT.  
(Also to nearest drlg. unit line, if any)

790'

16. NO. OF ACRES IN LEASE

318.41 FC/160.78 PC

17. NO. OF ACRES ASSIGNED  
TO THIS WELL

318.41 FC / 160.78 PC

18. DISTANCE FROM PROPOSED LOCATION\*  
TO NEAREST WELL, DRILLING, COMPLETED,  
OR APPLIED FOR, ON THIS LEASE, FT.

1,580'

19. PROPOSED DEPTH

2,375'

20. ROTARY OR CABLE TOOLS

Rotary Tools

21. ELEVATIONS (Show whether DF, RT, GR, etc.)

5,830' Ground Level

22. APPROX. DATE WORK WILL START\*

July 2001

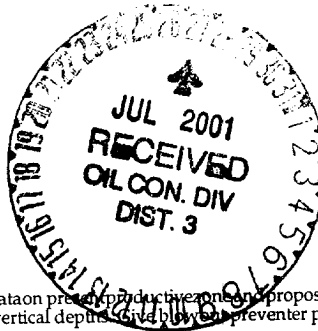
23. PROPOSED CASING AND CEMENTING PROGRAM

SIZE OF HOLE	GRADE SIZE OF CASING	WEIGHT PER FOOT	SETTING DEPTH	QUANTITY OF CEMENT
8-3/4"	7", J-55	20.0#	200'	75 sx Type III cmt. circ to surface
6-1/4"	4-1/2", J-55	10.5#	2,375' ✓	235 sx Premium Lite cmt.

This document is subject to Bureau of Land Management procedural review pursuant to 43 CFR 3165.3 and appeal pursuant to 43 CFR 3155.4.

THIS DOCUMENT IS SUBJECT TO BUREAU OF LAND MANAGEMENT PROCEDURAL REVIEW AND IS SUBJECT TO COMPLIANCE WITH ATTACHED "GENERAL REQUIREMENTS"

Cross Timbers plans to drill the above mentioned well as described in the enclosed Surface Use Program.



IN ABOVE SPACE DESCRIBE PROPOSED PROGRAM: If proposal is to deepen, give data on present productive zone and proposed new productive zone. If proposal is to drill or deepen directionally, give pertinent data on subsurface locations and measured and true vertical depths. Give blowout prevention program, if any.

24.

SIGNED

*JW Patton*

TITLE

Drilling Engineer

DATE 6/12/01

(This space for Federal or State office use)

PERMIT NO.

APPROVAL DATE

Application approval does not warrant or certify that the applicant holds legal or equitable title to those rights in the subject lease which would entitle the applicant to conduct operations thereon.  
CONDITIONS OF APPROVAL, IF ANY:

APPROVED BY

*Lee Otter*

TITLE

FM

DATE

7/25/01

\*See Instructions On Reverse Side

Title 18 U.S.C. Section 1001, makes it a crime for any person knowingly and willfully to make to any department or agency of the United States any false, fictitious or fraudulent statements or representations as to any matter within its jurisdiction.

DISTRICT I  
P.O. Box 1980, Hobbs, N.M. 88241-1980

DISTRICT II  
P.O. Drawer DD, Artesia, N.M. 88211-0719

DISTRICT III  
1000 Rio Brazos Rd., Aztec, N.M. 87410

DISTRICT IV  
PO Box 2088, Santa Fe, NM 87504-2088

State of New Mexico  
Energy, Minerals & Natural Resources Department

OIL CONSERVATION DIVISION  
P.O. Box 2088  
Santa Fe, NM 87504-2088

Form C-102  
Revised February 21, 1994  
Instructions on back  
Submit to Appropriate District Office  
State Lease - 4 Copies  
Fee Lease - 3 Copies

☐ AMENDED REPORT

## WELL LOCATION AND ACREAGE DEDICATION PLAT

<sup>1</sup> API Number <b>30-045-30697</b>	<sup>2</sup> Pool Code <b>71280</b>	<sup>3</sup> Pool Name <b>AZTEC PICTURED CLIFFS</b>
<sup>4</sup> Property Code <b>22620</b>	<sup>5</sup> Property Name <b>LC KELLY</b>	<sup>6</sup> Well Number <b>9</b>
<sup>7</sup> GRID No. <b>167067</b>	<sup>8</sup> Operator Name <b>CROSS TIMBERS OPERATING CO.</b>	<sup>9</sup> Elevation <b>5830'</b>

### <sup>10</sup> Surface Location

UL or lot no.	Section	Township	Range	Lot Idn	Feet from the	North/South line	Feet from the	East/West line	County
M	3	30-N	12-W		790	SOUTH	915	WEST	SAN JUAN

### <sup>11</sup> Bottom Hole Location If Different From Surface

UL or lot no.	Section	Township	Range	Lot Idn	Feet from the	North/South line	Feet from the	East/West line	County
<sup>12</sup> Dedicated Acres <b>160.78</b>		<sup>13</sup> Joint or Infill <b>SW/4</b>		<sup>14</sup> Consolidation Code		<sup>15</sup> Order No.			

NO ALLOWABLE WILL BE ASSIGNED TO THIS COMPLETION UNTIL ALL INTERESTS HAVE BEEN CONSOLIDATED  
OR A NON-STANDARD UNIT HAS BEEN APPROVED BY THE DIVISION

<div><p>16</p><p>QTR. CORNER FD 3 1/2" BC BLM 1978</p><p>915'</p><p>436'</p><p>790'</p><p>N 87-03-09 W 2701.51'</p><p>QTR. CORNER FD 3 1/2" BC BLM 1975</p><p>LAT: 36°50'11"N LONG: 108°05'30" W</p><p>DH MARKER AMOCO PROD. LC KELLY #4</p><p>3</p><p>01-19-34 W N 2584.08'</p></div>	<div><p>17 OPERATOR CERTIFICATION</p><p>I hereby certify that the information contained herein is true and complete to the best of my knowledge and belief</p><p><i>Jeffrey W. Patton</i> Signature <b>JEFFREY W. PATTON</b> Printed Name <b>DELLINE ENGINEER</b> Title <b>12/29/00</b> Date</p></div>
<div><p>18</p><p>QTR. CORNER FD 3 1/2" BC BLM 1978</p><p>915'</p><p>436'</p><p>790'</p><p>N 87-03-09 W 2701.51'</p><p>QTR. CORNER FD 3 1/2" BC BLM 1975</p><p>LAT: 36°50'11"N LONG: 108°05'30" W</p><p>DH MARKER AMOCO PROD. LC KELLY #4</p><p>3</p><p>01-19-34 W N 2584.08'</p></div>	<div><p>18 SURVEYOR CERTIFICATION</p><p>I hereby certify that the well location shown on this plat was plotted from field notes of actual surveys made by me or under my supervision and that the same is true and correct to the best of my belief</p><p><b>JUL 2001 RECEIVED OIL CON. DIV DIST. 3</b></p><p><b>NEW MEXICO</b> <b>8894</b> <b>REGISTERED PROFESSIONAL LAND SURVEYOR</b></p><p><i>[Signature]</i> Signature and Seal of Professional Surveyor <b>8894</b> Certificate Number</p></div>

**CardiTests Number**

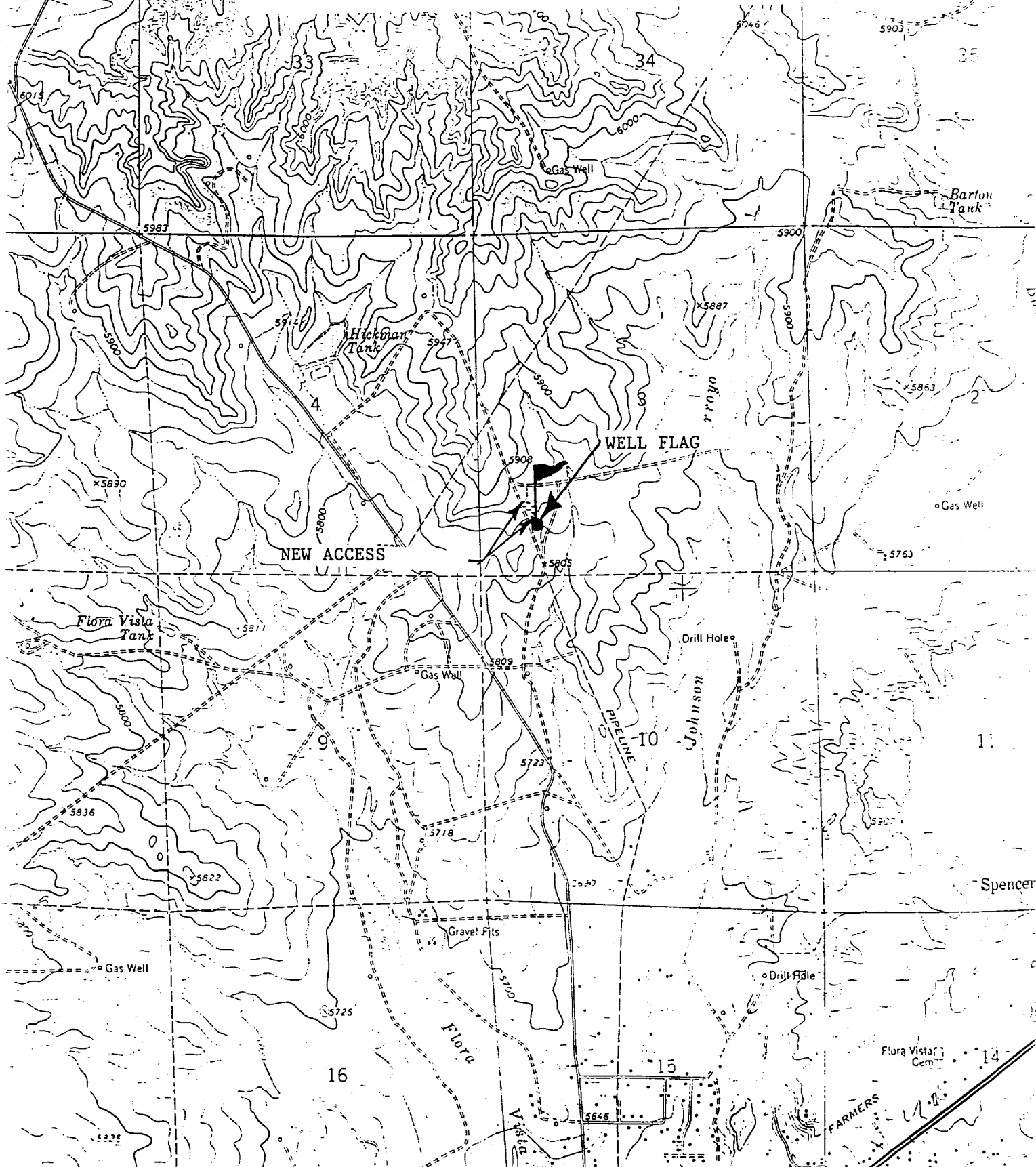
CROS. TIMBERS OPERATING CO 'PANY

LC KELLY #9

SW/4 SEC. 3, T-30-N, R-12-W, N.M.P.M.,

SAN JUAN COUNTY, NEW MEXICO

790 FSL 915 FWL



3. **WELLHEAD:**

Casinghead: Larkin Fig 92 (or equivalent) 2,000 psig WP (4,000 psig test) with 7", 8rd pin on bottom and 8-5/8" API Modified 8rd thread on top.

Tubinghead: Larkin Model 612 (or equivalent) 2,000 psig WP (4,000 psig test) with 4-1/2", 8rd bottom thread and 8-5/8" 8rd API Modified top body thread, 4.090" minimum bore.

4. **CEMENT PROGRAM:**

A. Surface: 7", 20#, J-55, STC casing at  $\pm 200'$ .

Lead: 75 sx Type III cement (or equivalent) containing  $\frac{1}{4}$  pps celloflake, 2%  $\text{CaCl}_2$  (mixed at 14.6 ppg, 1.39  $\text{ft}^3/\text{sk}$ , 6.67 gal wtr/sk).

Total slurry volume is 104.25  $\text{ft}^3$ , 250% excess of calculated annular volume required to circulate cement to surface.

B. Production: 4-1/2", 10.5#, J-55, STC casing at  $\pm 2,375'$ .

Lead: 235\* sx of 35:65 Poz/Type III cement containing 10 PPS CSE, 2%  $\text{CaCl}_2$ ,  $\frac{1}{4}$  PPS Celloflake, 0.65% bwoc FL-62, 6% gel (mixed at 12.5 ppg, 2.07  $\text{ft}^3/\text{sk}$ , 10.95 gal wtr/sk).

Total estimated slurry volume is 487  $\text{ft}^3$ , 100% excess of calculated annular volume required to circulate cement to surface.

\* Actual cement volumes will be determined using log caliper volume plus 30% excess.

5. **DRILLING HAZARDS:**

- $\text{H}_2\text{S}$  or other Poisonous Gases: No formations known to contain  $\text{H}_2\text{S}$  or any other poisonous gases will be penetrated with this wellbore.
- Abnormal Pressures: No overpressured zones are known to exist or are anticipated to be encountered during the drilling of this well.
- Lost Circulation: Seepage and/or lost circulation may be encountered below surface casing and can be controlled with conventional lost circulation materials added to the mud system.

6. **LOGGING PROGRAM:**

Array Induction/DFL/GR/SP/Cal  
DSN/Spectral Density/GR/Cal/Pe

TD to bottom of surf csg.  
TD to 1600' & 1000' to 700'

No mud logger to be used on this well.



Cross Timbers Operating Company

## BOP SCHEMATIC FOR DRILLING OPERATIONS CLASS 1 (2M) NORMAL PRESSURE

